



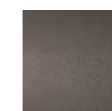
ALVEA

design Marco Lavit

Triangular console table with a load-bearing structure made of 8 mm thick steel sheet painted in a burnished colour with epoxy powders. The side panels are 20 mm thick MDF veneered in oak essence, with a top consisting of interlocking 20x20 mm elements, enclosed by a perimeter frame of solid oak measuring 50x20 mm.

The wooden parts are available in a natural oak or charcoal-dyed oak finish. Floor support provided by plastic tips.

Supporting Structure and Feet



Burnished
Painting

Structure

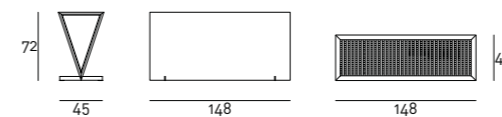


Natural Oak



Charcoal-dyed
Oak

Technical Drawings



Notes

Wood is a living material; therefore, it can have slight color and dimension changes. The presence of any non-homogeneous color shades is not to be considered a defect but a quality. Please note that the direct sunlight exposure may alter the wood color; therefore, we recommend the periodic position shift of the objects placed on the furniture for the first months to avoid differences in shades between exposed and covered portions.

For the charcoal-dyed oak version, the steel sheet load-bearing structure, only on the internal part, matches the oak structure's finish.

