

Ditre Italia Products

2025

---

# **Tessuti** ***Fabrics***

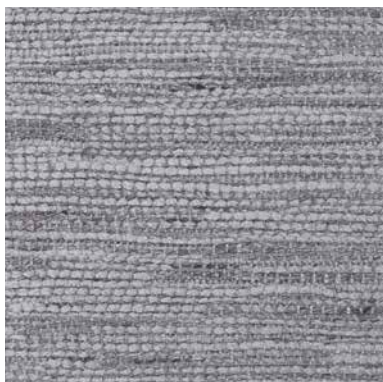
**DITRE**  
**italia**

CAT. U

# Upside



UPSIDE 102



UPSIDE 105



UPSIDE 106



UPSIDE 108



UPSIDE 112



UPSIDE 116



UPSIDE 118

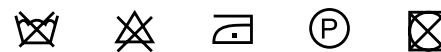


UPSIDE 120

## INFORMAZIONI TECNICHE / TECHNICAL INFORMATION

Composizione / composition	41% VI - 26% CO - 21% LI - 5% PL
Martindale / martindale	36.000 cicli/cycles
Pilling / Pilling	4

## MANUTENZIONE / MAINTENANCE

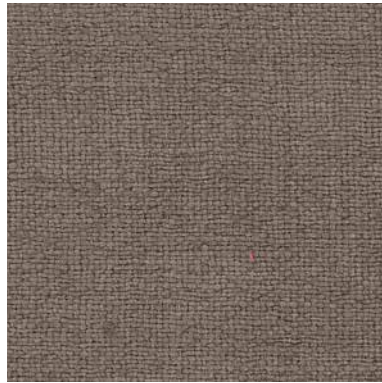


CAT. U

# Universal



UNIVERSAL 02



UNIVERSAL 05



UNIVERSAL 11



UNIVERSAL 25



UNIVERSAL 26



UNIVERSAL 32



UNIVERSAL 33

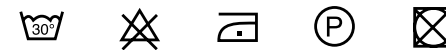


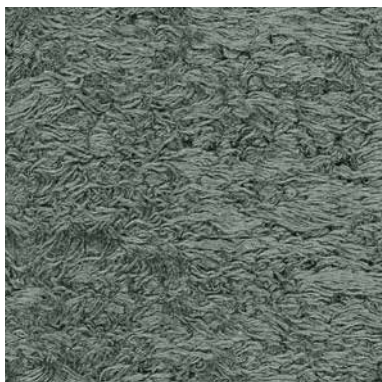
UNIVERSAL 50

## INFORMAZIONI TECNICHE / TECHNICAL INFORMATION

Composizione / composition	24% CA - 44% LI - 32% CO
Martindale / martindale	30.000 cicli/cycles
Pilling / Pilling	3/4

## MANUTENZIONE / MAINTENANCE

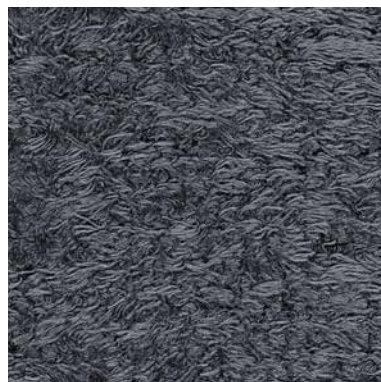




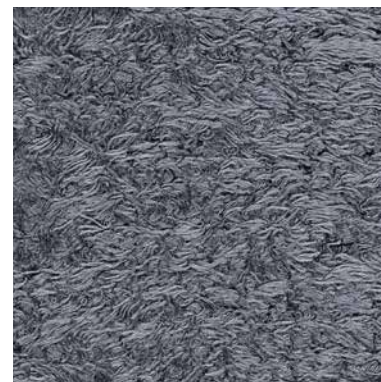
UBER 001



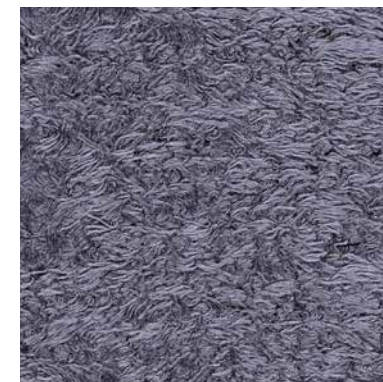
UBER 004



UBER 005



UBER 006



UBER 007



UBER 010



UBER 011



UBER 013



UBER 014



UBER 015

### INFORMAZIONI TECNICHE / TECHNICAL INFORMATION

Composizione / composition	59% PC - 41% PL
Martindale / martindale	30.000 cicli/cycles
Pilling / Pilling	3/4

### MANUTENZIONE / MAINTENANCE



CAT. U

# Uber



UBER 016



UBER 017



UBER 021



UBER 023

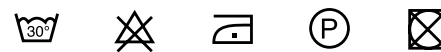


UBER 024

## INFORMAZIONI TECNICHE / TECHNICAL INFORMATION

Composizione / composition	59% PC - 41% PL
Martindale / martindale	30.000 cicli/cycles
Pilling / Pilling	3/4

## MANUTENZIONE / MAINTENANCE





TWIN 001



TWIN 002



TWIN 004



TWIN 007



TWIN 008



TWIN 009



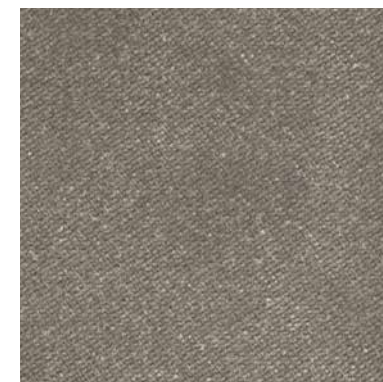
TWIN 011



TWIN 012



TWIN 013



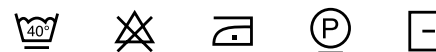
TWIN 017

### INFORMAZIONI TECNICHE / TECHNICAL INFORMATION

Composizione / composition	100% RPL
Martindale / martindale	50.000 cicli/cycles
Pilling / Pilling	4

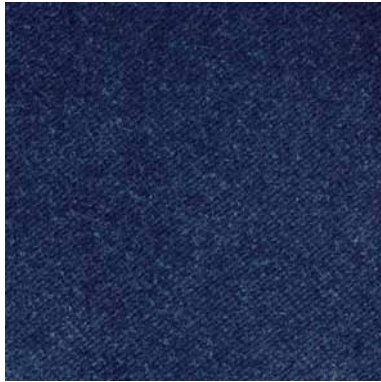
 Eco-Friendly

### MANUTENZIONE / MAINTENANCE





TWIN 018



TWIN 020

## INFORMAZIONI TECNICHE / TECHNICAL INFORMATION

Composizione / composition	100% RPL
Martindale / martindale	50.000 cicli/cycles
Pilling / Pilling	4



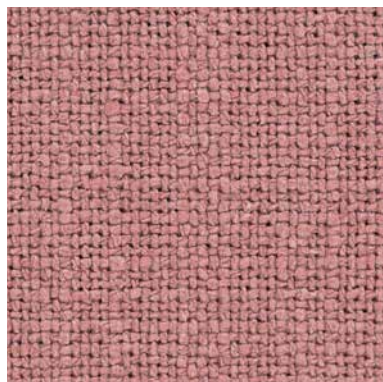
Eco-Friendly

## MANUTENZIONE / MAINTENANCE





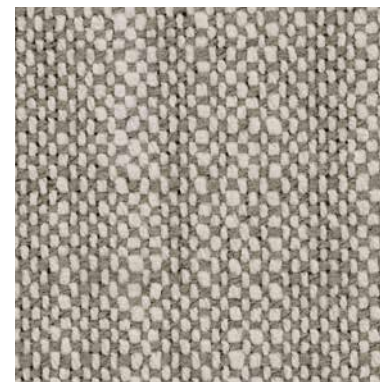
TRUST 503



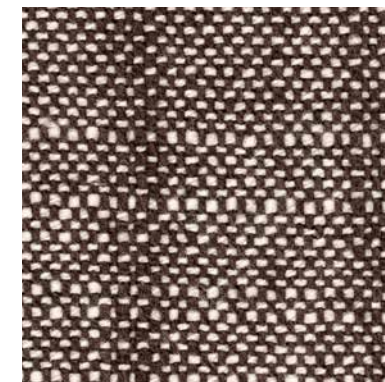
TRUST 512



TRUST 601



TRUST 605



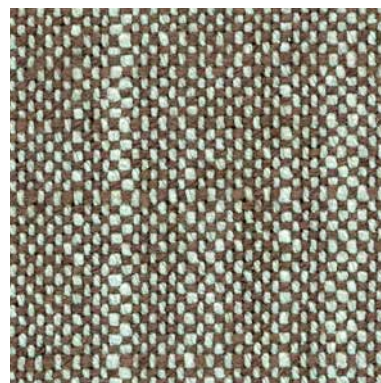
TRUST 607



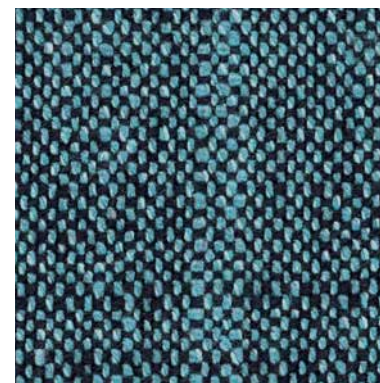
TRUST 611



TRUST 615



TRUST 619



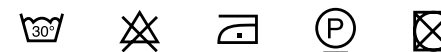
TRUST 690

### INFORMAZIONI TECNICHE / TECHNICAL INFORMATION

Composizione / composition	80% RCO - 20% PL
Martindale / martindale	55.000 cicli/cycles
Pilling / Pilling	3/4

 Eco-Friendly

### MANUTENZIONE / MAINTENANCE



CAT. T

# Trend



TREND 001



TREND 002



TREND 003



TREND 004



TREND 010



TREND 011



TREND 033



TREND 034



TREND 035

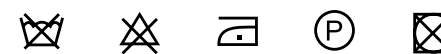


TREND 039

## INFORMAZIONI TECNICHE / TECHNICAL INFORMATION

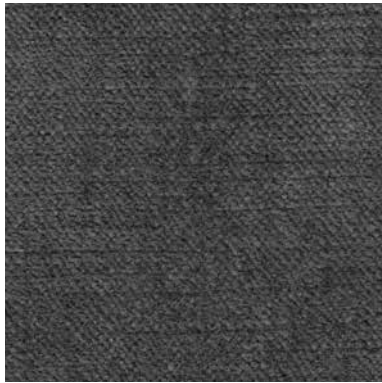
Composizione / composition	55% VI - 45% CO
Martindale / martindale	50.000 cicli/cycles
Pilling / Pilling	4

## MANUTENZIONE / MAINTENANCE



CAT. T

# Trend



TREND 044



TREND 052



TREND 068



TREND 088



TREND 231



TREND 232



TREND 233

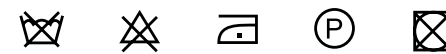


TREND 234

## INFORMAZIONI TECNICHE / TECHNICAL INFORMATION

Composizione / composition	55% VI - 45% CO
Martindale / martindale	50.000 cicli/cycles
Pilling / Pilling	4

## MANUTENZIONE / MAINTENANCE



CAT. T

# Tosca



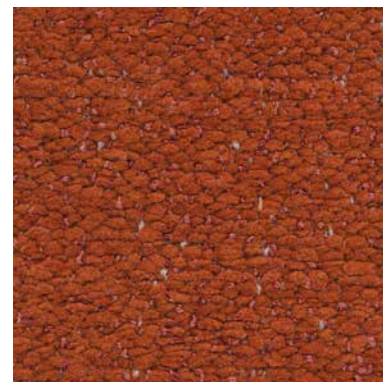
TOSCA 100



TOSCA 111



TOSCA 200



TOSCA 304



TOSCA 400



TOSCA 401



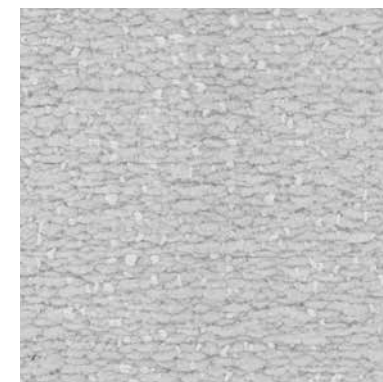
TOSCA 402



TOSCA 403



TOSCA 500



TOSCA 600

## INFORMAZIONI TECNICHE / TECHNICAL INFORMATION

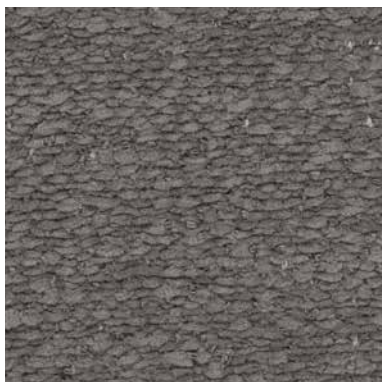
Composizione / composition	96% PL - 4% EA
Martindale / martindale	40.000 cicli/cycles
Pilling / Pilling	4/5

## MANUTENZIONE / MAINTENANCE



CAT. T

# Tosca



TOSCA 601



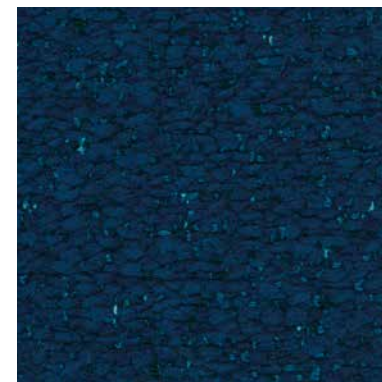
TOSCA 605



TOSCA 700



TOSCA 702

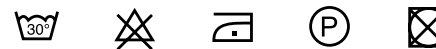


TOSCA 704

## INFORMAZIONI TECNICHE / TECHNICAL INFORMATION

Composizione / composition	96% PL - 4% EA
Martindale / martindale	40.000 cicli/cycles
Pilling / Pilling	4/5

## MANUTENZIONE / MAINTENANCE





TORINO 007



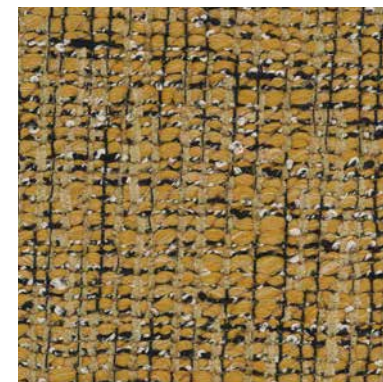
TORINO 012



TORINO 016



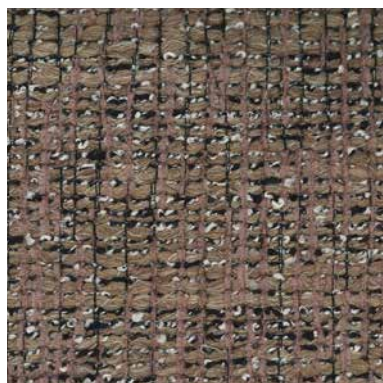
TORINO 017



TORINO 018



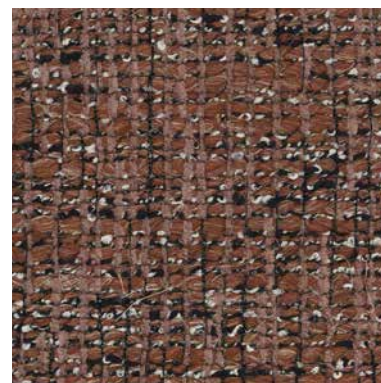
TORINO 021



TORINO 023



TORINO 024



TORINO 025

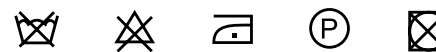


TORINO 038

### INFORMAZIONI TECNICHE / TECHNICAL INFORMATION

Composizione / composition	53%PC - 18%PL - 15%CO - 6%LI - 6%VI - 2%PA
Martindale / martindale	30.000 cicli/cycles
Pilling / Pilling	3

### MANUTENZIONE / MAINTENANCE



CAT. T

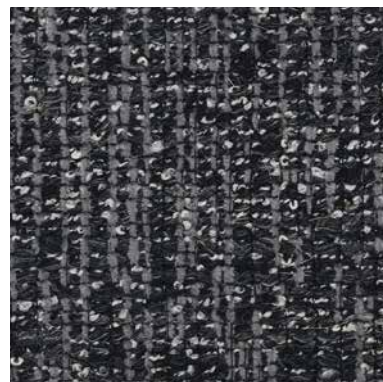
# Torino



TORINO 039



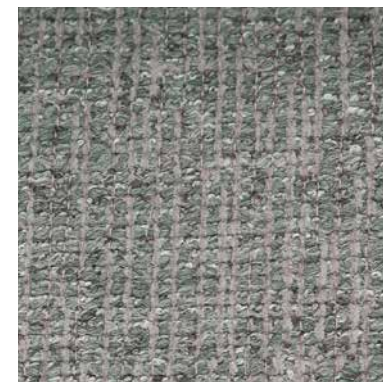
TORINO 042



TORINO 043



TORINO 070

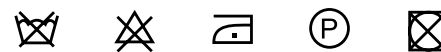


TORINO 121

## INFORMAZIONI TECNICHE / TECHNICAL INFORMATION

Composizione / composition	53%PC - 18%PL - 15%CO - 6%LI - 6%VI - 2%PA
Martindale / martindale	30.000 cicli/cycles
Pilling / Pilling	3

## MANUTENZIONE / MAINTENANCE



CAT. T

# Toledo



TOLEDO 102



TOLEDO 103



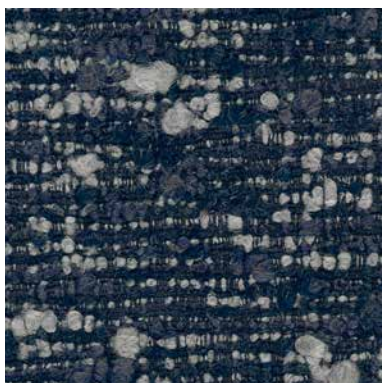
TOLEDO 104



TOLEDO 105



TOLEDO 107



TOLEDO 108



TOLEDO 109

## INFORMAZIONI TECNICHE / TECHNICAL INFORMATION

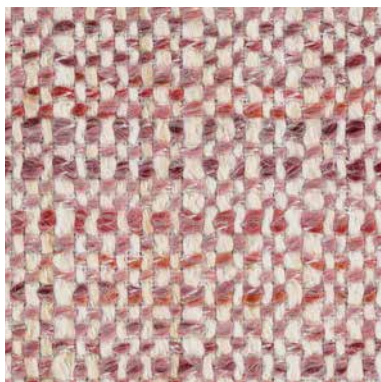
Composizione / composition	58% PC - 30% PL - 12% WO
Martindale / martindale	30.000 cicli/cycles
Pilling / Pilling	4

## MANUTENZIONE / MAINTENANCE





TIME 007



TIME 010



TIME 024



TIME 029



TIME 035

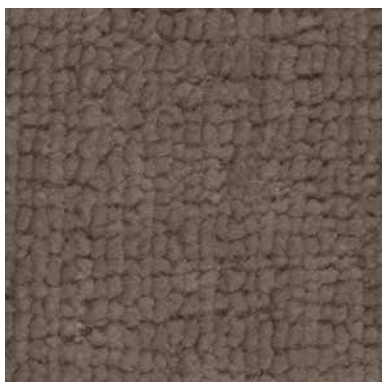


TIME 036

**INFORMAZIONI TECNICHE / TECHNICAL INFORMATION**

Composizione / composition	49% PC - 14% CO - 14% PL - 23% LI
Martindale / martindale	>35.000 cicli/cycles
Pilling / Pilling	4

**MANUTENZIONE / MAINTENANCE**



TEXAS 004



TEXAS 008



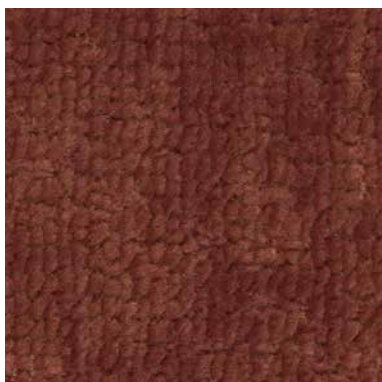
TEXAS 011



TEXAS 013



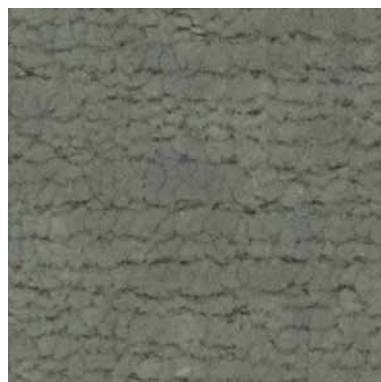
TEXAS 015



TEXAS 016



TEXAS 018



TEXAS 022



TEXAS 023



TEXAS 025

### INFORMAZIONI TECNICHE / TECHNICAL INFORMATION

Composizione / composition	72 % RPET - 28% PL
Martindale / martindale	60.000 cicli/cycles
Pilling / Pilling	5

 Eco-Friendly

### MANUTENZIONE / MAINTENANCE



CAT. T

# Teddy



TEDDY 25



TEDDY 27



TEDDY 102



TEDDY 110



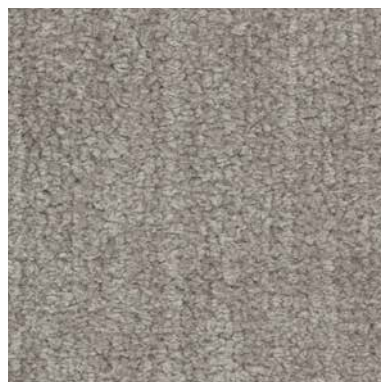
TEDDY 111



TEDDY 116



TEDDY 117



TEDDY 121



TEDDY 201

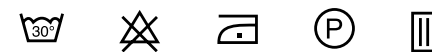


TEDDY 204

## INFORMAZIONI TECNICHE / TECHNICAL INFORMATION

Composizione / composition	80% PL - 20% CO
Martindale / martindale	100.000 cicli/cycles
Pilling / Pilling	4

## MANUTENZIONE / MAINTENANCE



CAT. T

# Teddy



TEDDY 207



TEDDY 209

## INFORMAZIONI TECNICHE / TECHNICAL INFORMATION

Composizione / composition	80% PL - 20% CO
Martindale / martindale	100.000 cicli/cycles
Pilling / Pilling	4

## MANUTENZIONE / MAINTENANCE

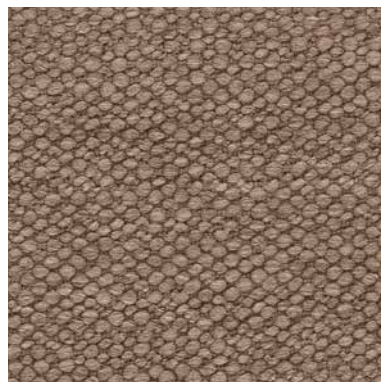




TAPE 304



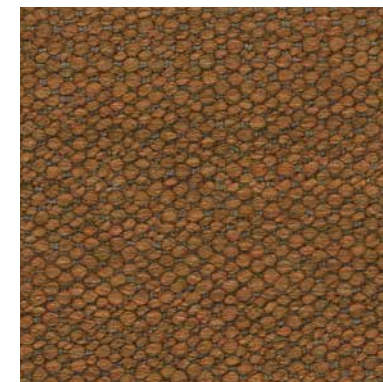
TAPE 305



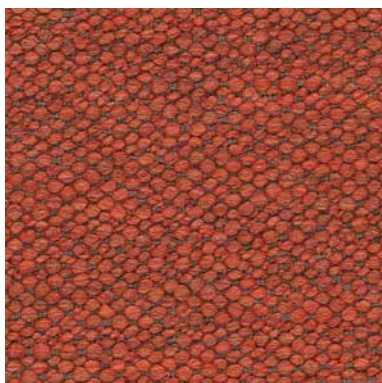
TAPE 306



TAPE 311



TAPE 314



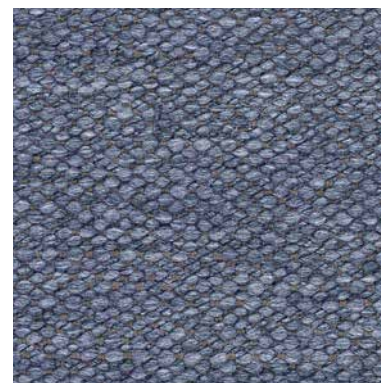
TAPE 315



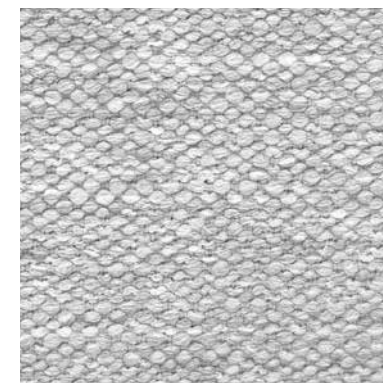
TAPE 316



TAPE 318



TAPE 320

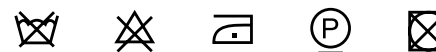


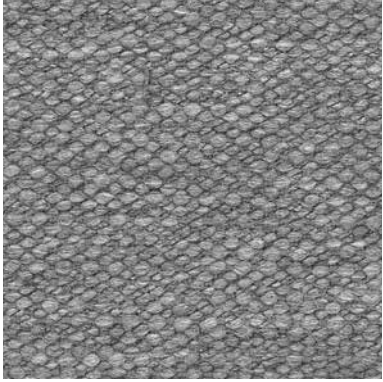
TAPE 321

### INFORMAZIONI TECNICHE / TECHNICAL INFORMATION

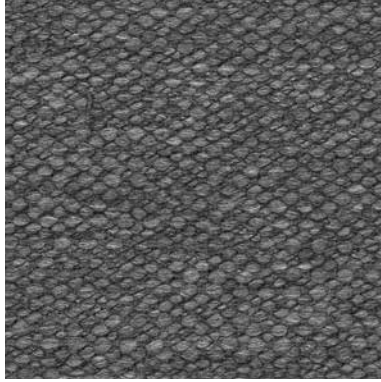
Composizione / composition	49% PC - 23% PL - 23% VI - 5% CO
Martindale / martindale	30.000 cicli/cycles
Pilling / Pilling	3/4

### MANUTENZIONE / MAINTENANCE





TAPE 322

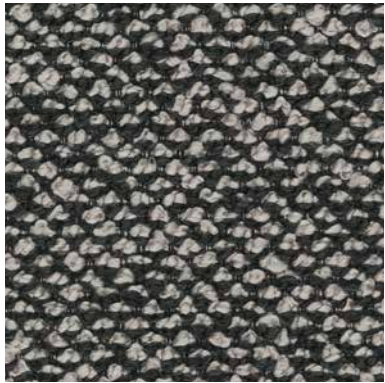


TAPE 323

**INFORMAZIONI TECNICHE / TECHNICAL INFORMATION**

Composizione / composition	49% PC - 23% PL - 23% VI - 5% CO
Martindale / martindale	30.000 cicli/cycles
Pilling / Pilling	3/4

**MANUTENZIONE / MAINTENANCE**



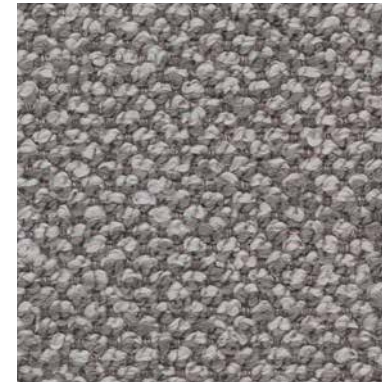
TANGO 003



TANGO 004



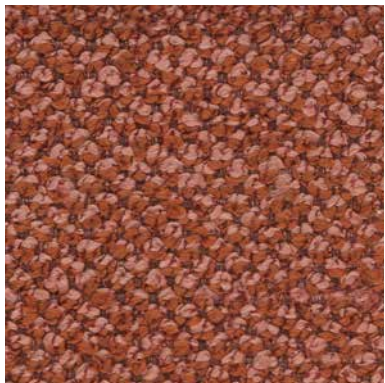
TANGO 005



TANGO 008



TANGO 010



TANGO 012



TANGO 014



TANGO 015



TANGO 017



TANGO 018

### INFORMAZIONI TECNICHE / TECHNICAL INFORMATION

Composizione / composition	70% PC - 25% PL - 5% CO
Martindale / martindale	50.000 cicli/cycles
Pilling / Pilling	4

### MANUTENZIONE / MAINTENANCE



CAT. T

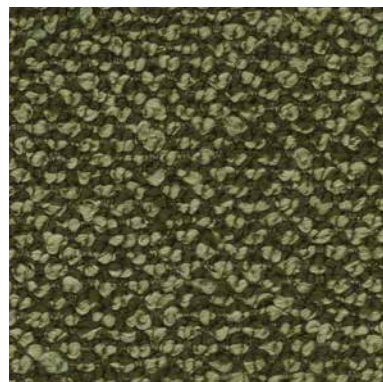
# Tango



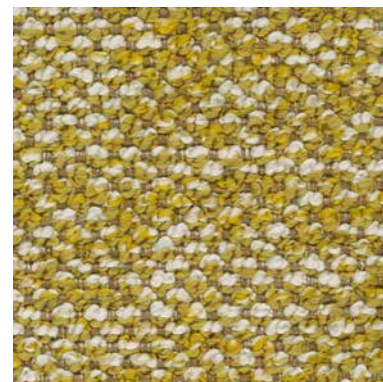
TANGO 020



TANGO 021



TANGO 022



TANGO 025



TANGO 027

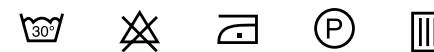


TANGO 028

## INFORMAZIONI TECNICHE / TECHNICAL INFORMATION

Composizione / composition	70% PC - 25% PL - 5% CO
Martindale / martindale	50.000 cicli/cycles
Pilling / Pilling	4

## MANUTENZIONE / MAINTENANCE





TALLIN 04



TALLIN 05



TALLIN 06



TALLIN 11



TALLIN 14



TALLIN 15



TALLIN 016



TALLIN 18



TALLIN 20

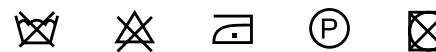


TALLIN 21

### INFORMAZIONI TECNICHE / TECHNICAL INFORMATION

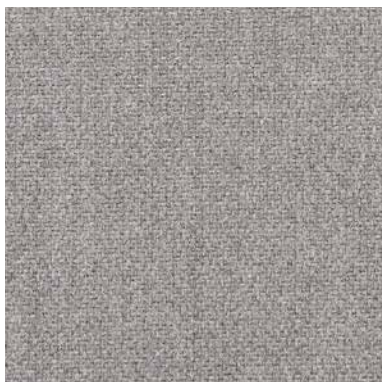
Composizione / composition	90% CO - 10% PL
Martindale / martindale	30.000 cicli/cycles
Pilling / Pilling	3/4

### MANUTENZIONE / MAINTENANCE

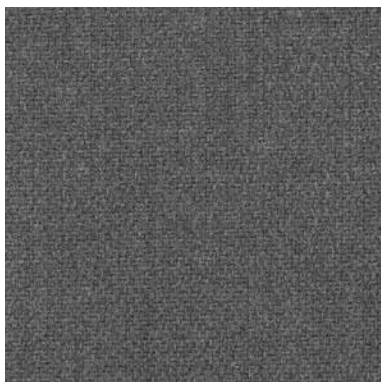


CAT. T

# Tallin



TALLIN 22

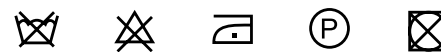


TALLIN 23

## INFORMAZIONI TECNICHE / TECHNICAL INFORMATION

Composizione / composition	90% CO - 10% PL
Martindale / martindale	30.000 cicli/cycles
Pilling / Pilling	3/4

## MANUTENZIONE / MAINTENANCE



CAT. P

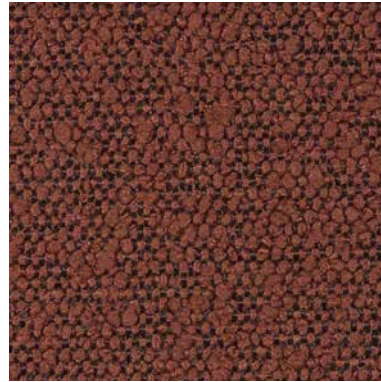
# Princess



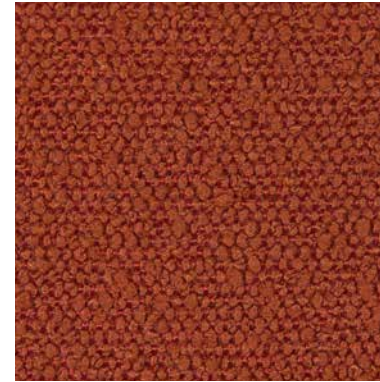
PRINCESS 901



PRINCESS 101



PRINCESS 300



PRINCESS 304



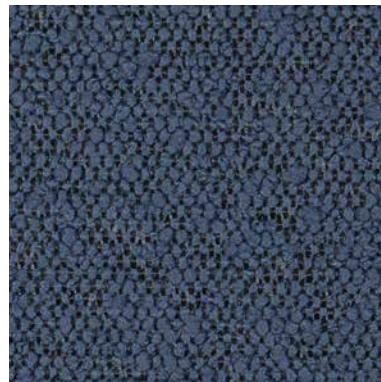
PRINCESS 400



PRINCESS 502



PRINCESS 600



PRINCESS 604



PRINCESS 705



PRINCESS 802

## INFORMAZIONI TECNICHE / TECHNICAL INFORMATION

Composizione / composition	100% PLFR
Martindale / martindale	80.000 cicli/cycles
Pilling / Pilling	5

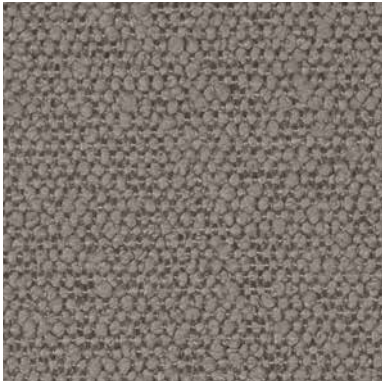
## MANUTENZIONE / MAINTENANCE



CAT. P

# Princess

---



PRINCESS 803



PRINCESS 903

---

## INFORMAZIONI TECNICHE / TECHNICAL INFORMATION

Composizione / composition	100% PLFR
Martindale / martindale	80.000 cicli/cycles
Pilling / Pilling	5

## MANUTENZIONE / MAINTENANCE



CAT. P

# Primula



PRIMULA 100



PRIMULA 101



PRIMULA 500



PRIMULA 600



PRIMULA 800



PRIMULA 802



PRIMULA 803



PRIMULA 901



PRIMULA 902



PRIMULA 903

## INFORMAZIONI TECNICHE / TECHNICAL INFORMATION

Composizione / composition	97%PL - 3%LI
Martindale / martindale	100.000 cicli/cycles
Pilling / Pilling	4/5

## MANUTENZIONE / MAINTENANCE





POTTER 501



POTTER 503



POTTER 509



POTTER 510



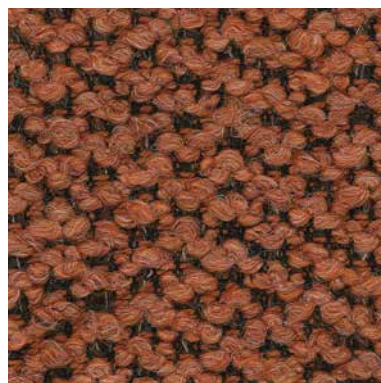
POTTER 512



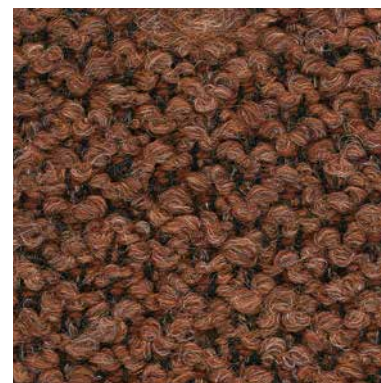
POTTER 522



POTTER 524



POTTER 529



POTTER 530

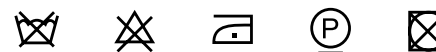


POTTER 539

### INFORMAZIONI TECNICHE / TECHNICAL INFORMATION

Composizione / composition	34% PC - 24% CO - 14% WO - 12% VI - 12% PL - 4% LI
Martindale / martindale	30.000 cicli/cycles
Pilling / Pilling	4

### MANUTENZIONE / MAINTENANCE





POTTER 540



POTTER 543

**INFORMAZIONI TECNICHE / TECHNICAL INFORMATION**

Composizione / composition	34% PC - 24% CO - 14% WO - 12% VI - 12% PL - 4% LI
Martindale / martindale	30.000 cicli/cycles
Pilling / Pilling	4

**MANUTENZIONE / MAINTENANCE**



POST 055



POST 058



POST 059



POST 062



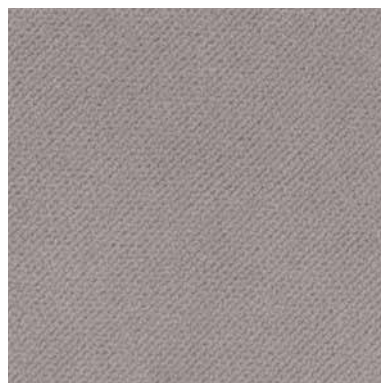
POST 076



POST 071



POST 205



POST 208



POST 096



POST 094

#### INFORMAZIONI TECNICHE / TECHNICAL INFORMATION

Composizione / composition	100% PL
Martindale / martindale	60.000 cicli/cycles
Pilling / Pilling	5

#### MANUTENZIONE / MAINTENANCE



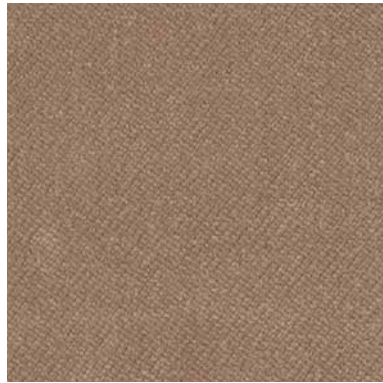
Si prega di notare che la tirella Post III è costituita dalle tirelle Post I e Post II / Please note that Post III swatch made up of Post I and Post II swatches.

CAT. P

## Post I / Post III



POST 089



POST 093



POST 203

### INFORMAZIONI TECNICHE / TECHNICAL INFORMATION

Composizione / composition	100% PL
Martindale / martindale	60.000 cicli/cycles
Pilling / Pilling	5

### MANUTENZIONE / MAINTENANCE



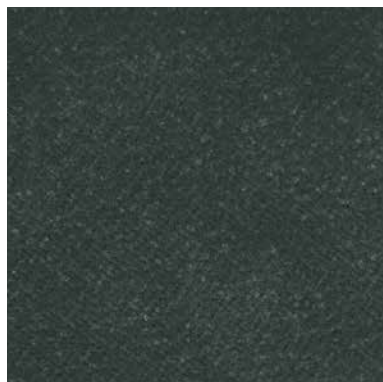
Si prega di notare che la tirella Post III è costituita dalle tirelle Post I e Post II / Please note that Post III swatch made up of Post I and Post II swatches.

CAT. P

## Post II / Post III



POST 018



POST 019



POST 023



POST 032



POST 035



POST 041



POST 046



POST 049



POST 053



POST 058

### INFORMAZIONI TECNICHE / TECHNICAL INFORMATION

Composizione / composition	100% PL
Martindale / martindale	60.000 cicli/cycles
Pilling / Pilling	5

### MANUTENZIONE / MAINTENANCE



Si prega di notare che la tirella Post III è costituita dalle tirelle Post I e Post II / Please note that Post III swatch made up of Post I and Post II swatches.

CAT. P

## Post II / Post III

---



POST 060



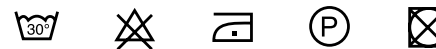
POST 064

---

### INFORMAZIONI TECNICHE / TECHNICAL INFORMATION

Composizione / composition	100% PL
Martindale / martindale	60.000 cicli/cycles
Pilling / Pilling	5

### MANUTENZIONE / MAINTENANCE



Si prega di notare che la tirella Post III è costituita dalle tirelle Post I e Post II / Please note that Post III swatch made up of Post I and Post II swatches.



POSITANO 105



POSITANO 108



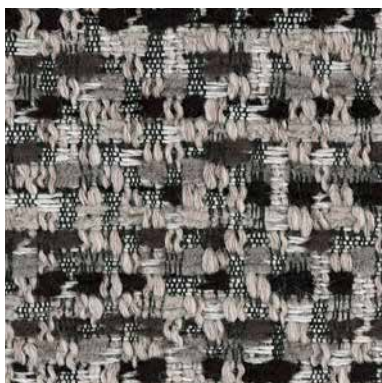
POSITANO 114



POSITANO 134



POSITANO 139



POSITANO 141

## INFORMAZIONI TECNICHE / TECHNICAL INFORMATION

Composizione / composition	58% PVC - 14% PL 15% WO 13% CO
Martindale / martindale	20.000 cicli/cycles
Pilling / Pilling	5

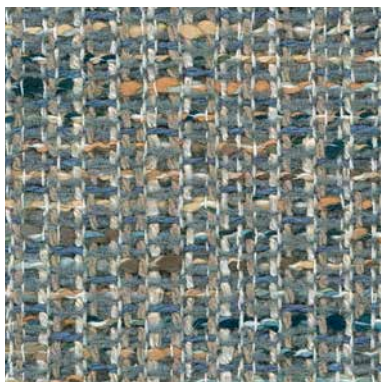
## MANUTENZIONE / MAINTENANCE



# Play



PLAY 001



PLAY 002



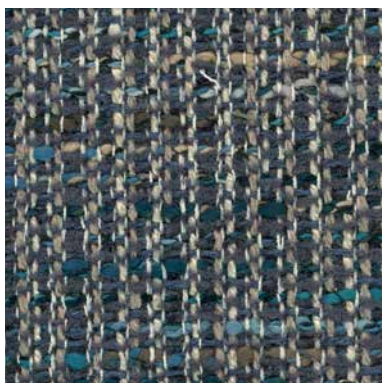
PLAY 004



PLAY 007



PLAY 008



PLAY 013



PLAY 015



PLAY 018

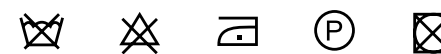


PLAY 021

## INFORMAZIONI TECNICHE / TECHNICAL INFORMATION

Composizione / composition	55% CO - 16% PL - 13% VI - 12% PC - 3%LI - 1% PA
Martindale / martindale	20.000 cicli/cycles
Pilling / Pilling	4

## MANUTENZIONE / MAINTENANCE





PETRA 002



PETRA 010



PETRA 014



PETRA 020



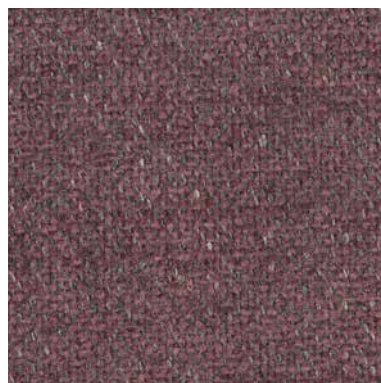
PETRA 022



PETRA 026



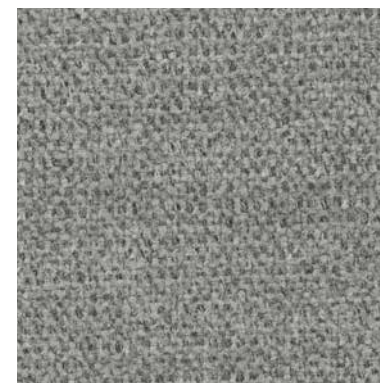
PETRA 029



PETRA 031



PETRA 036

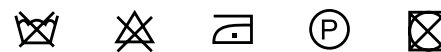


PETRA 037

### INFORMAZIONI TECNICHE / TECHNICAL INFORMATION

Composizione / composition	41% CO - 36% PL - 23% PC
Martindale / martindale	25.000 cicli/cycles
Pilling / Pilling	5

### MANUTENZIONE / MAINTENANCE



CAT. P

# Petra



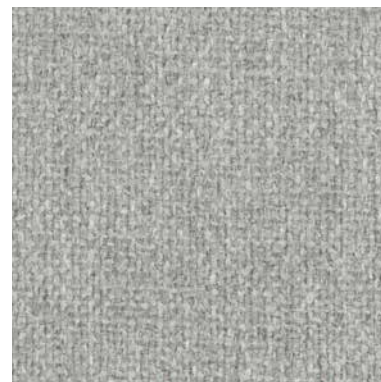
PETRA 038



PETRA 040



PETRA 041

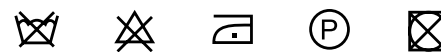


PETRA 042

## INFORMAZIONI TECNICHE / TECHNICAL INFORMATION

Composizione / composition	41% CO - 36% PL - 23% PC
Martindale / martindale	25.000 cicli/cycles
Pilling / Pilling	5

## MANUTENZIONE / MAINTENANCE





PECHINO 201



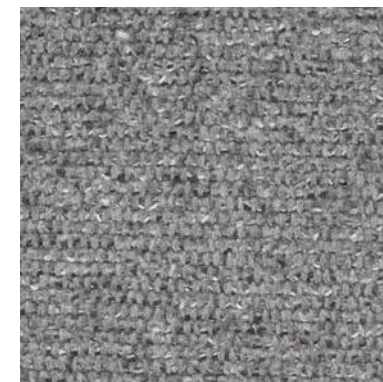
PECHINO 202



PECHINO 215



PECHINO 217



PECHINO 219



PECHINO 221



PECHINO 233



PECHINO 238



PECHINO 277



PECHINO 338

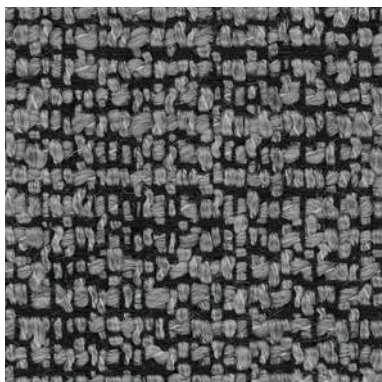
### INFORMAZIONI TECNICHE / TECHNICAL INFORMATION

Composizione / composition	60% RCO - 40% PL
Martindale / martindale	60.000 cicli/cycles
Pilling / Pilling	5

 Eco-friendly

### MANUTENZIONE / MAINTENANCE

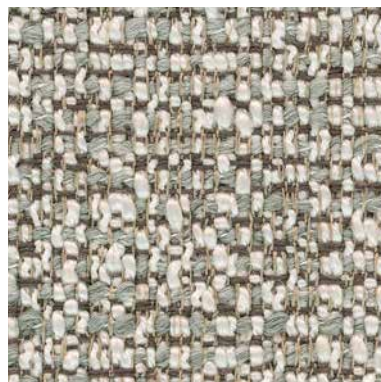




PABLO 09



PABLO 13



PABLO 49



PABLO 50



PABLO 75



PABLO 96



PABLO 154



PABLO 163



PABLO 168

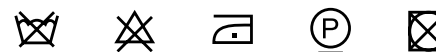


PABLO 171

### INFORMAZIONI TECNICHE / TECHNICAL INFORMATION

Composizione / composition	23% WO - 48% PC - 12% PL - 7% CO - 10% NY
Martindale / martindale	24.000 cicli/cycles
Pilling / Pilling	4

### MANUTENZIONE / MAINTENANCE



CAT. M

# Memphis



MEMPHIS 402



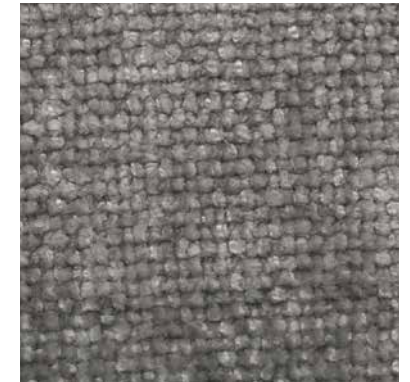
MEMPHIS 403



MEMPHIS 404



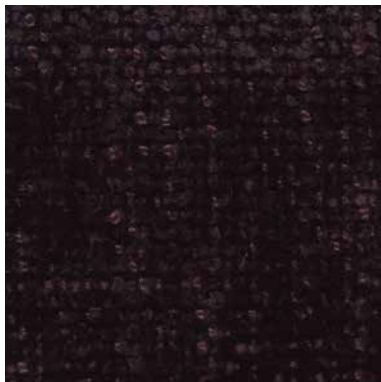
MEMPHIS 405



MEMPHIS 408



MEMPHIS 410



MEMPHIS 413



MEMPHIS 414



MEMPHIS 416



MEMPHIS 418

## INFORMAZIONI TECNICHE / TECHNICAL INFORMATION

Composizione / composition	100% PL
Martindale / martindale	50.000 cicli/cycles
Pilling / Pilling	4/5

## MANUTENZIONE / MAINTENANCE

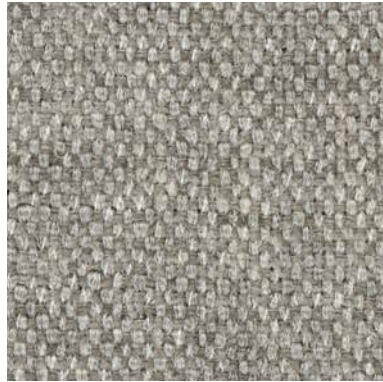


CAT. M

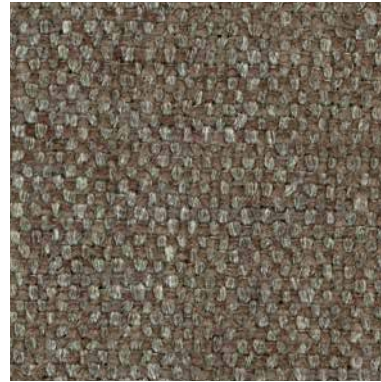
# Meghan



MEGHAN 04



MEGHAN 13



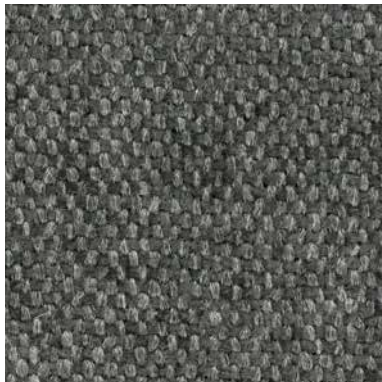
MEGHAN 19



MEGHAN 24



MEGHAN 56



MEGHAN 63

## INFORMAZIONI TECNICHE / TECHNICAL INFORMATION

Composizione / composition	66% PC - 11% LI - 12% PL - 11% VI
Martindale / martindale	30.000 cicli/cycles
Pilling / Pilling	4

## MANUTENZIONE / MAINTENANCE



CAT. M

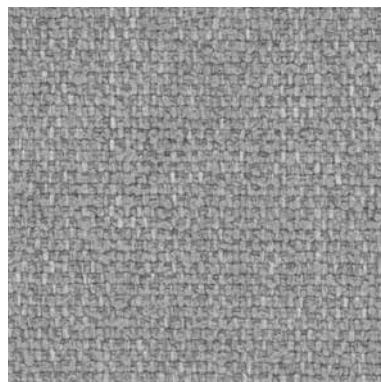
# Medley



MEDLEY 002



MEDLEY 004



MEDLEY 007



MEDLEY 009



MEDLEY 010



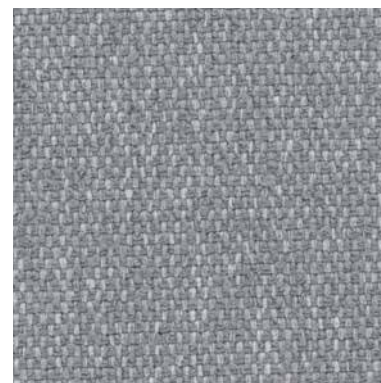
MEDLEY 011



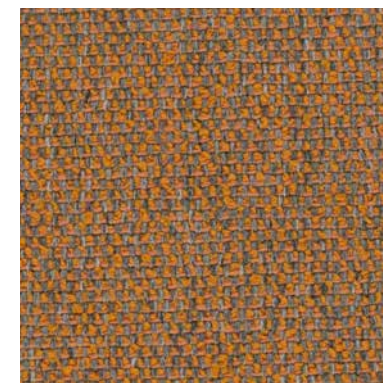
MEDLEY 016



MEDLEY 018



MEDLEY 020

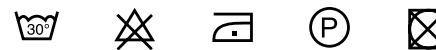


MEDLEY 022

## INFORMAZIONI TECNICHE / TECHNICAL INFORMATION

Composizione / composition	85% PL - 15% CO
Martindale / martindale	30.000 cicli/cycles
Pilling / Pilling	5

## MANUTENZIONE / MAINTENANCE



CAT. M

# Medley



MEDLEY 023



MEDLEY 027



MEDLEY 028

## INFORMAZIONI TECNICHE / TECHNICAL INFORMATION

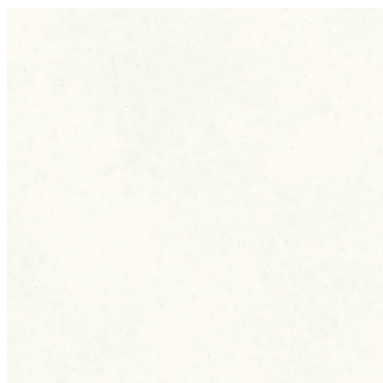
Composizione / composition	85% PL - 15% CO
Martindale / martindale	30.000 cicli/cycles
Pilling / Pilling	5

## MANUTENZIONE / MAINTENANCE

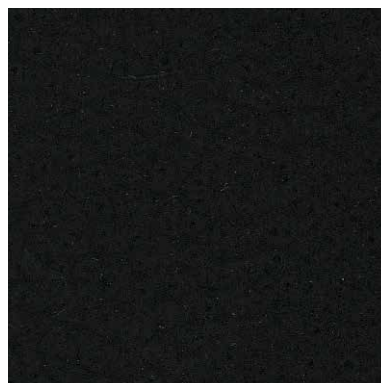




MAYA 000



MAYA 001



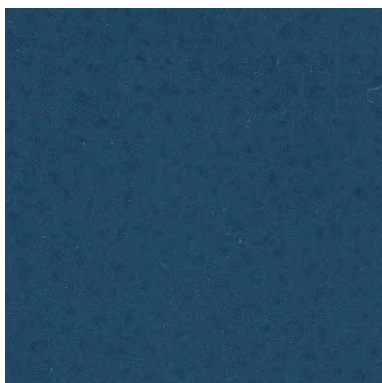
MAYA 016



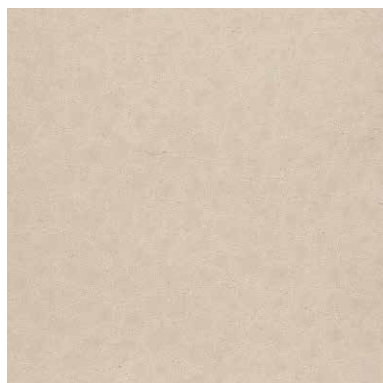
MAYA 020



MAYA 100



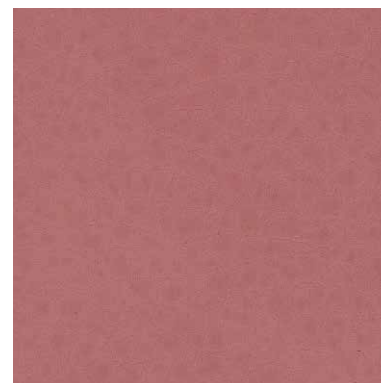
MAYA 120



MAYA 175



MAYA 240



MAYA 275

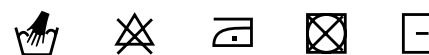


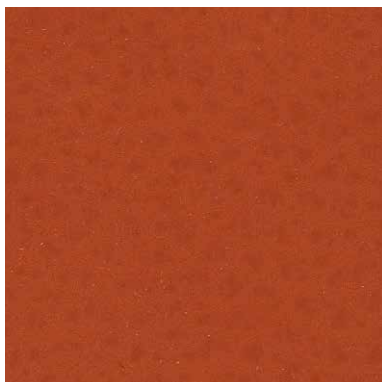
MAYA 280

### INFORMAZIONI TECNICHE / TECHNICAL INFORMATION

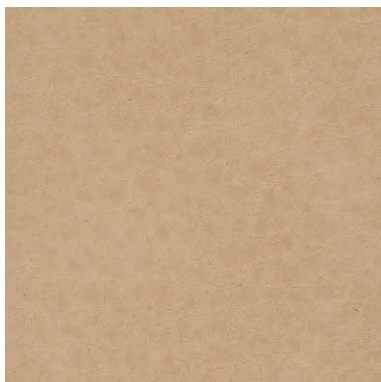
Composizione / composition	30% CO - 2% PU - 68% PVC
Martindale / martindale	>50.000 cicli/cycles
Pilling / Pilling	-

### MANUTENZIONE / MAINTENANCE

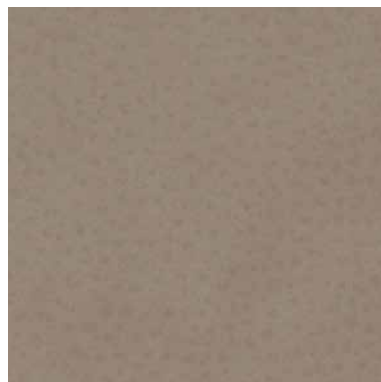




MAYA 410



MAYA 450



MAYA 750



MAYA 791



MAYA 950

**INFORMAZIONI TECNICHE / TECHNICAL INFORMATION**

Composizione / composition	30% CO - 2% PU - 68% PVC
Martindale / martindale	>50.000 cicli/cycles
Pilling / Pilling	-

**MANUTENZIONE / MAINTENANCE**



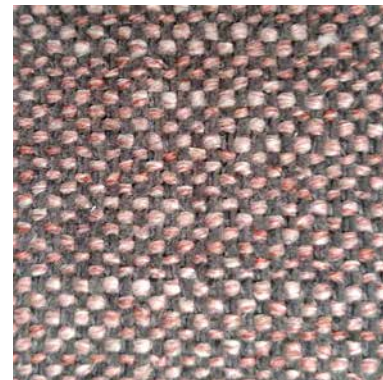
MARTIN 101



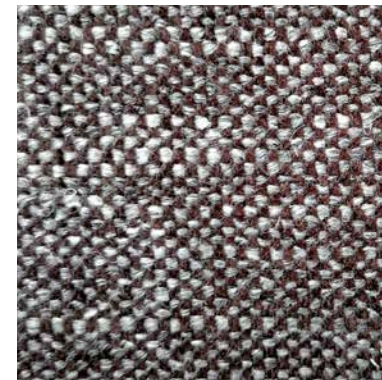
MARTIN 102



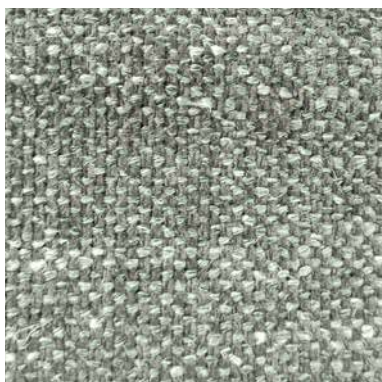
MARTIN 103



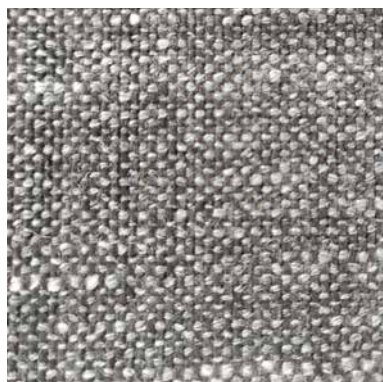
MARTIN 104



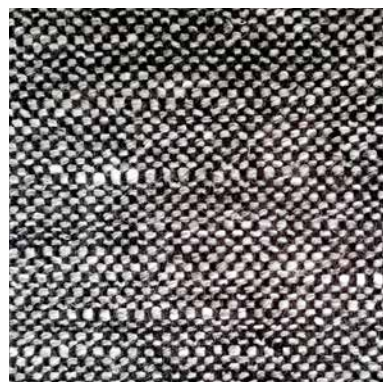
MARTIN 105



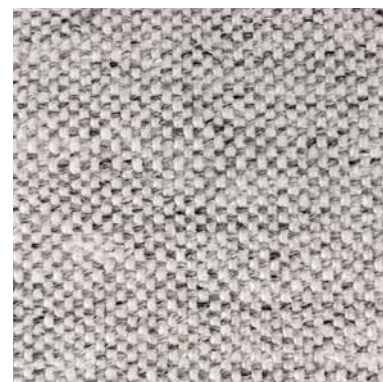
MARTIN 106



MARTIN 107



MARTIN 108



MARTIN 109

## INFORMAZIONI TECNICHE / TECHNICAL INFORMATION

Composizione / composition	28% PL - 23% LI - 14% WO - 13% CO - 9% VI - 7% PA - 5% PC
Martindale / martindale	50.000 cicli/cycles
Pilling / Pilling	4

## MANUTENZIONE / MAINTENANCE



CAT. M

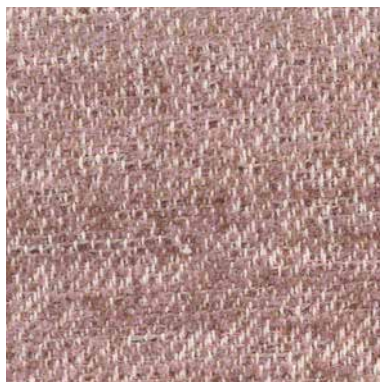
# Marbella



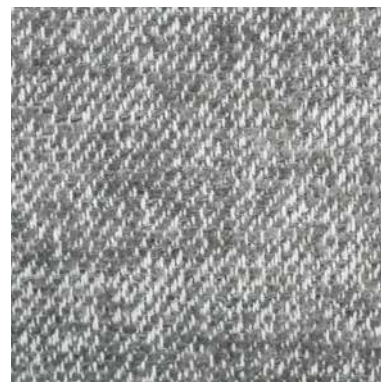
MARBELLA 001



MARBELLA 002



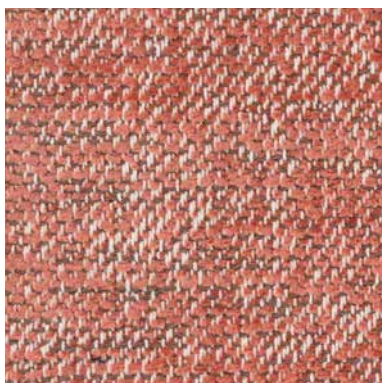
MARBELLA 004



MARBELLA 005



MARBELLA 006



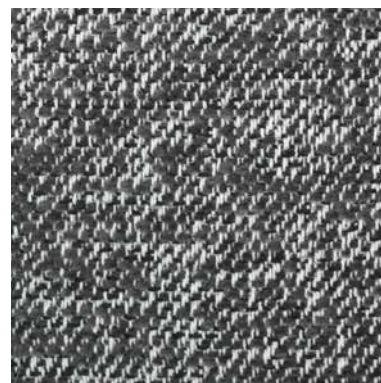
MARBELLA 012



MARBELLA 014



MARBELLA 018



MARBELLA 021



MARBELLA 100

## INFORMAZIONI TECNICHE / TECHNICAL INFORMATION

Composizione / composition

65% CO - 35% PL

Martindale / martindale

50.000 cicli/cycles

Pilling / Pilling

4/5

## MANUTENZIONE / MAINTENANCE





MANHATTAN 001



MANHATTAN 002



MANHATTAN 009



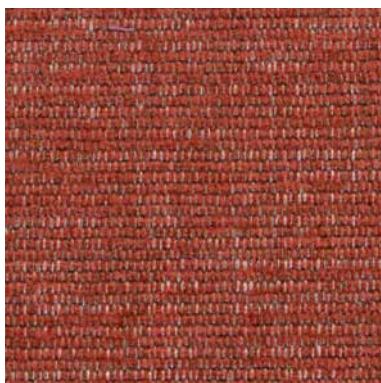
MANHATTAN 012



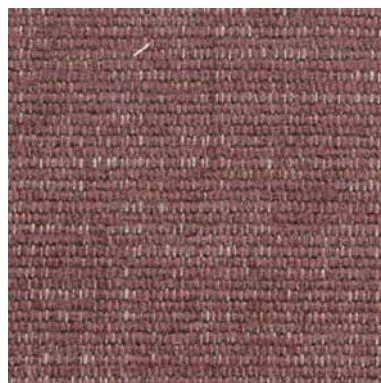
MANHATTAN 017



MANHATTAN 019



MANHATTAN 020



MANHATTAN 021



MANHATTAN 102



MANHATTAN 103

### INFORMAZIONI TECNICHE / TECHNICAL INFORMATION

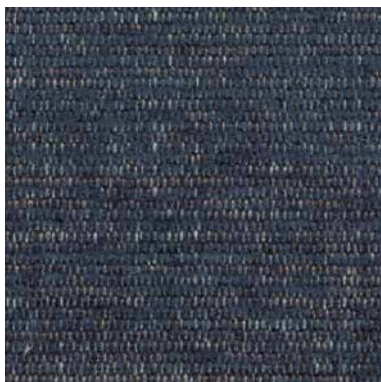
Composizione / composition	50% PL - 27% PC - 9% CO - 7% LI - 7% VI
Martindale / martindale	25.000 cicli/cycles
Pilling / Pilling	5

### MANUTENZIONE / MAINTENANCE





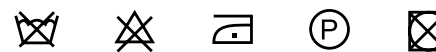
MANHATTAN 104



MANHATTAN 105

**INFORMAZIONI TECNICHE / TECHNICAL INFORMATION**

Composizione / composition	50% PL - 27% PC - 9% CO - 7% LI - 7% VI
Martindale / martindale	25.000 cicli/cycles
Pilling / Pilling	5

**MANUTENZIONE / MAINTENANCE**

CAT. M

# Malaga



MALAGA 01



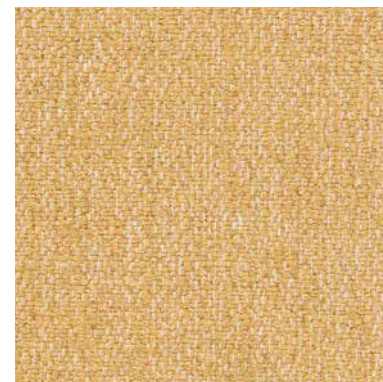
MALAGA 04



MALAGA 06



MALAGA 07



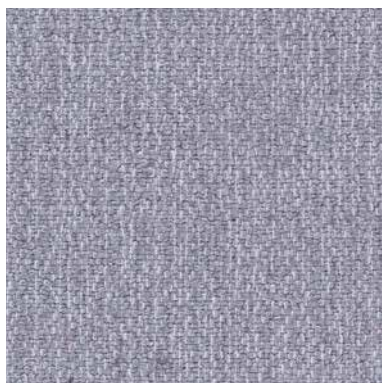
MALAGA 08



MALAGA 09



MALAGA 12



MALAGA 15



MALAGA 16

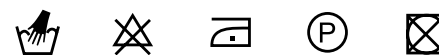


MALAGA 24

## INFORMAZIONI TECNICHE / TECHNICAL INFORMATION

Composizione / composition	50% VI - 21% CO - 19% LI - 10% PL
Martindale / martindale	35.000 cicli/cycles
Pilling / Pilling	4/5

## MANUTENZIONE / MAINTENANCE

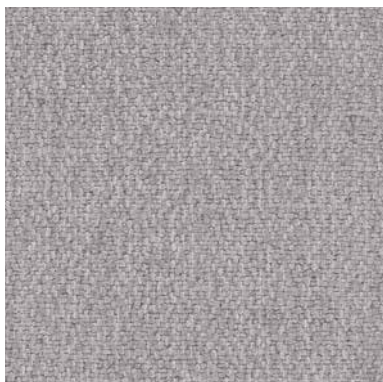


CAT. M

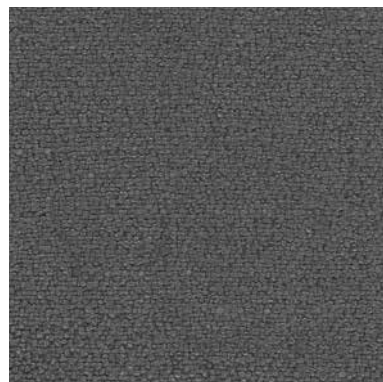
# Malaga



MALAGA 26



MALAGA 40



MALAGA 41

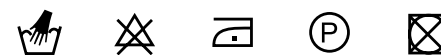


MALAGA 50

## INFORMAZIONI TECNICHE / TECHNICAL INFORMATION

Composizione / composition	50% VI - 21% CO - 19% LI - 10% PL
Martindale / martindale	35.000 cicli/cycles
Pilling / Pilling	4/5

## MANUTENZIONE / MAINTENANCE



CAT. M

# Madera



MADERA 350



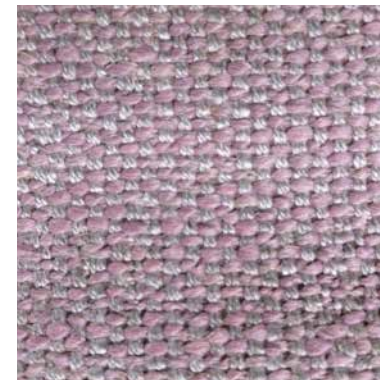
MADERA 360



MADERA 361



MADERA 362



MADERA 364



MADERA 551



MADERA 571



MADERA 572



MADERA 573



MADERA 575

## INFORMAZIONI TECNICHE / TECHNICAL INFORMATION

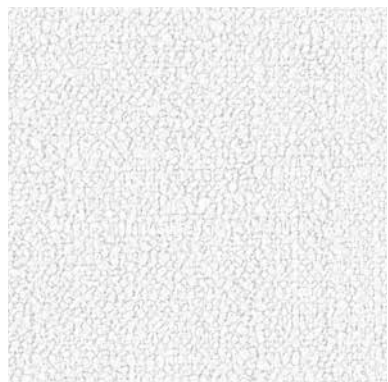
Composizione / composition	28% CO - 26%VI - 25% PC - 16% LI - 5% PL
Martindale / martindale	25.000 cicli/cycles
Pilling / Pilling	4

## MANUTENZIONE / MAINTENANCE



CAT. L

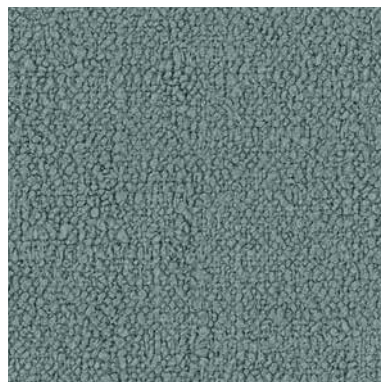
# Lounge



LOUNGE 310



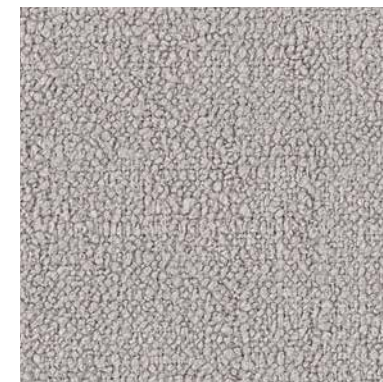
LOUNGE 315



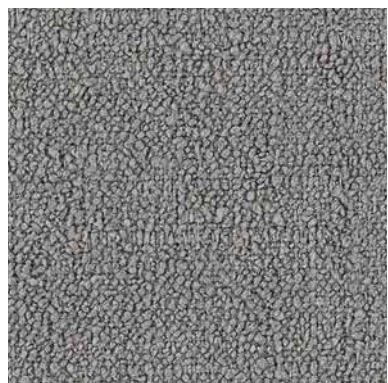
LOUNGE 319



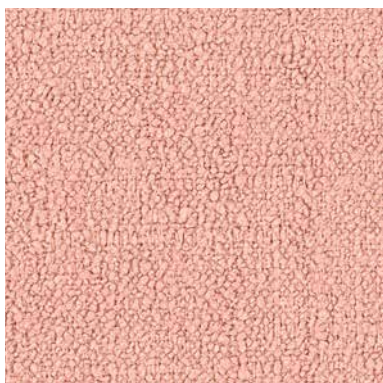
LOUNGE 325



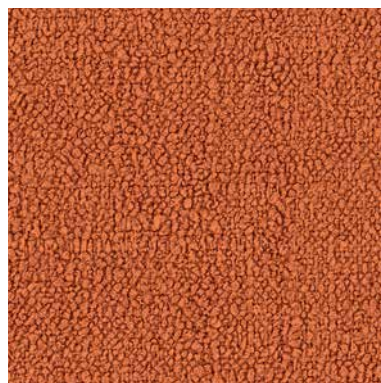
LOUNGE 331



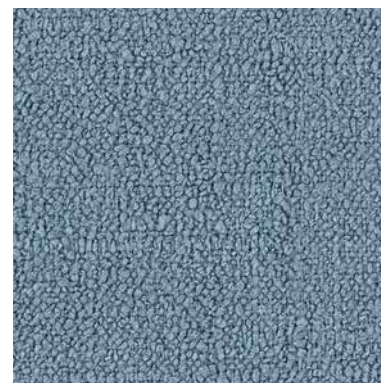
LOUNGE 332



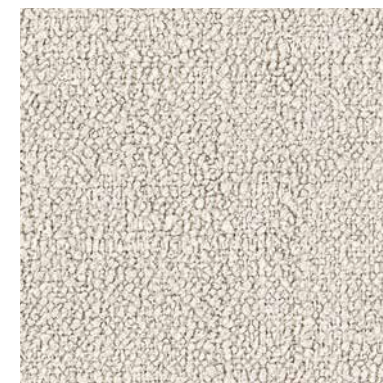
LOUNGE 335



LOUNGE 348



LOUNGE 353

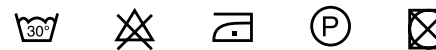


LOUNGE 357

## INFORMAZIONI TECNICHE / TECHNICAL INFORMATION

Composizione / composition	100% PL
Martindale / martindale	30.000 cicli/cycles
Pilling / Pilling	4

## MANUTENZIONE / MAINTENANCE

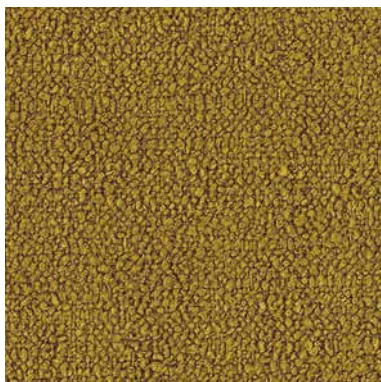


CAT. L

# Lounge



LOUNGE 376



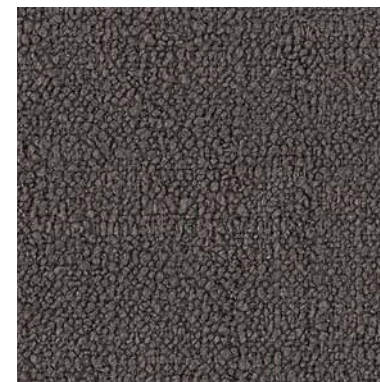
LOUNGE 381



LOUNGE 388



LOUNGE 392



LOUNGE 394

## INFORMAZIONI TECNICHE / TECHNICAL INFORMATION

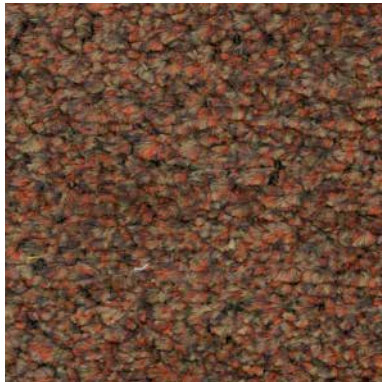
Composizione / composition	100% PL
Martindale / martindale	30.000 cicli/cycles
Pilling / Pilling	4

## MANUTENZIONE / MAINTENANCE



CAT. L

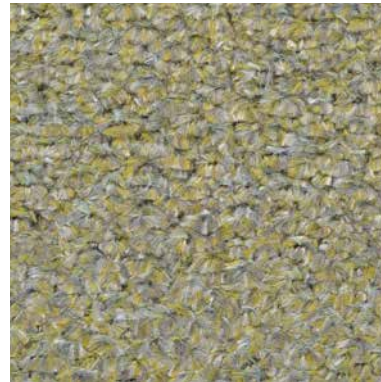
# Lolita



LOLITA 105



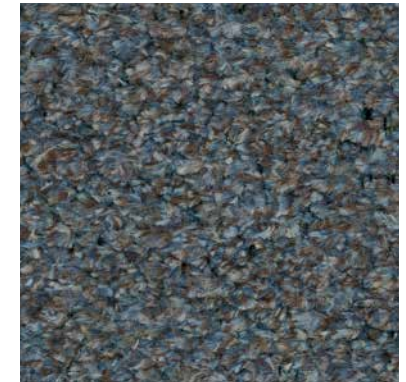
LOLITA 125



LOLITA 129



LOLITA 131



LOLITA 133



LOLITA 134



LOLITA 153



LOLITA 159

## INFORMAZIONI TECNICHE / TECHNICAL INFORMATION

Composizione / composition	100% PL
Martindale / martindale	40.000 cicli/cycles
Pilling / Pilling	4

## MANUTENZIONE / MAINTENANCE



CAT. L

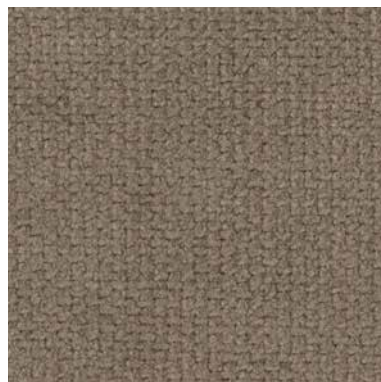
# Logan



LOGAN 001



LOGAN 002



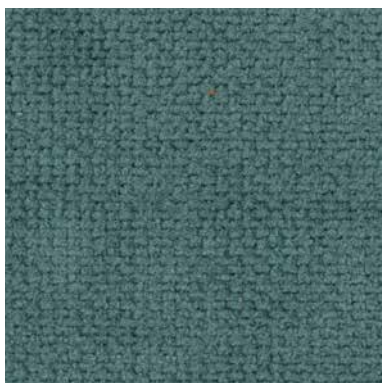
LOGAN 004



LOGAN 006



LOGAN 011



LOGAN 012



LOGAN 014



LOGAN 015



LOGAN 019

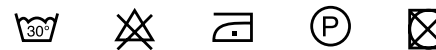


LOGAN 020

## INFORMAZIONI TECNICHE / TECHNICAL INFORMATION

Composizione / composition	100% PL
Martindale / martindale	100.000 cicli/cycles
Pilling / Pilling	5

## MANUTENZIONE / MAINTENANCE

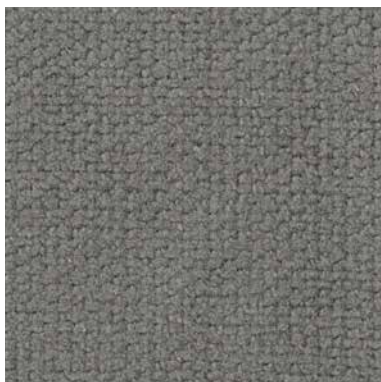


CAT. L

# Logan



LOGAN 021



LOGAN 022



LOGAN 025

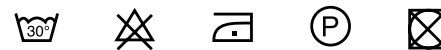


LOGAN 026

## INFORMAZIONI TECNICHE / TECHNICAL INFORMATION

Composizione / composition	100% PL
Martindale / martindale	100.000 cicli/cycles
Pilling / Pilling	5

## MANUTENZIONE / MAINTENANCE



CAT. L

# Link



LINK 001



LINK 002



LINK 003



LINK 004



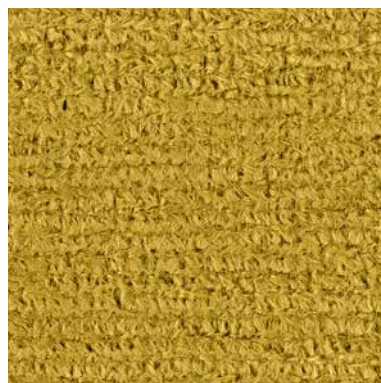
LINK 005



LINK 007



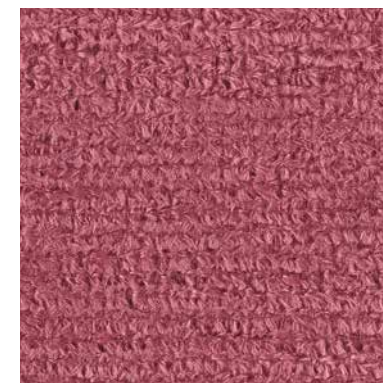
LINK 008



LINK 010



LINK 015

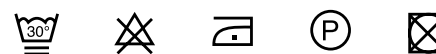


LINK 016

## INFORMAZIONI TECNICHE / TECHNICAL INFORMATION

Composizione / composition	97% PL - 3% VI
Martindale / martindale	30.000 cicli/cycles
Pilling / Pilling	4

## MANUTENZIONE / MAINTENANCE

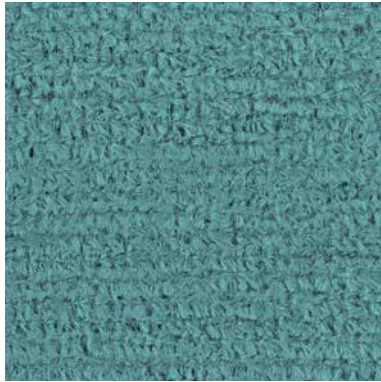


CAT. L

# Link



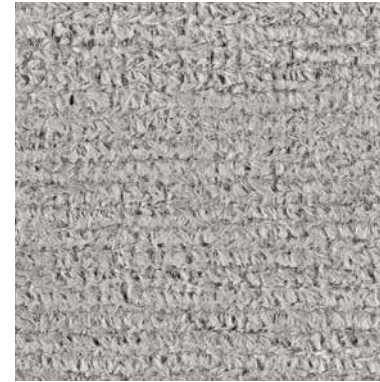
LINK 020



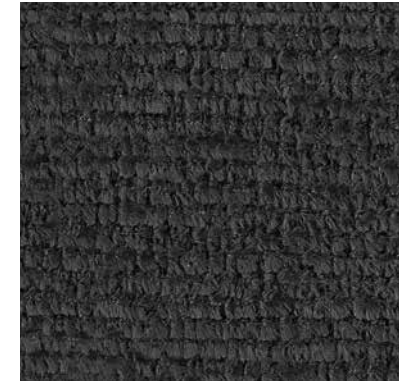
LINK 022



LINK 025



LINK 028



LINK 033

## INFORMAZIONI TECNICHE / TECHNICAL INFORMATION

Composizione / composition	97% PL - 3% VI
Martindale / martindale	30.000 cicli/cycles
Pilling / Pilling	4

## MANUTENZIONE / MAINTENANCE



CAT. L

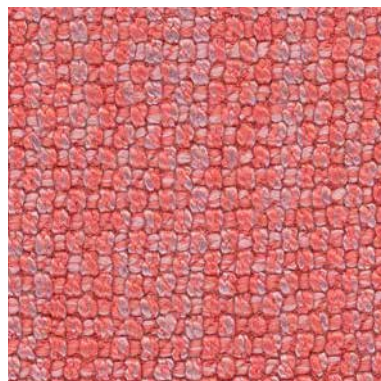
# Lewis



LEWIS 102



LEWIS 201



LEWIS 315



LEWIS 400



LEWIS 403



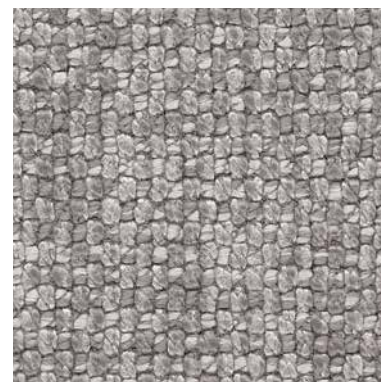
LEWIS 405



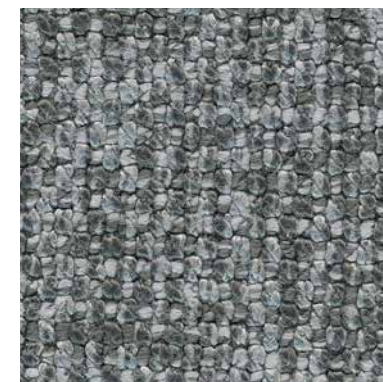
LEWIS 411



LEWIS 503



LEWIS 600



LEWIS 601

## INFORMAZIONI TECNICHE / TECHNICAL INFORMATION

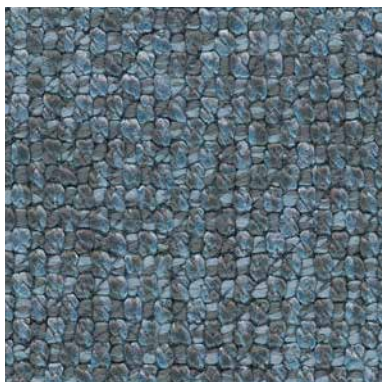
Composizione / composition	57% PL - 43% VI
Martindale / martindale	100.000 cicli/cycles
Pilling / Pilling	4

## MANUTENZIONE / MAINTENANCE



CAT. L

# Lewis



LEWIS 705



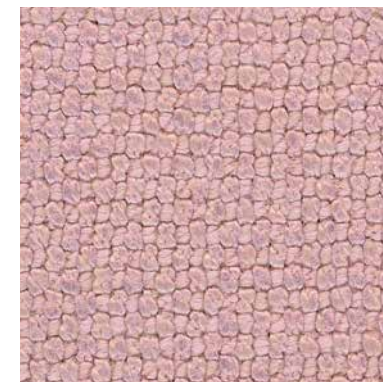
LEWIS 714



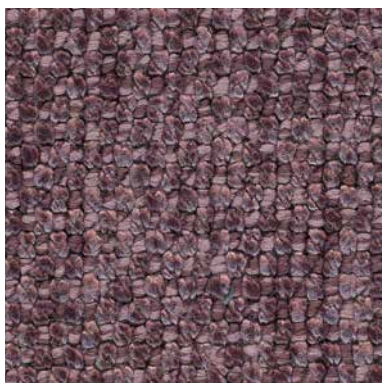
LEWIS 800



LEWIS 802



LEWIS 900



LEWIS 905

## INFORMAZIONI TECNICHE / TECHNICAL INFORMATION

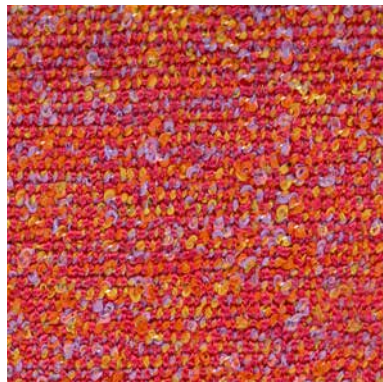
Composizione / composition	57% PL - 43% VI
Martindale / martindale	100.000 cicli/cycles
Pilling / Pilling	4

## MANUTENZIONE / MAINTENANCE

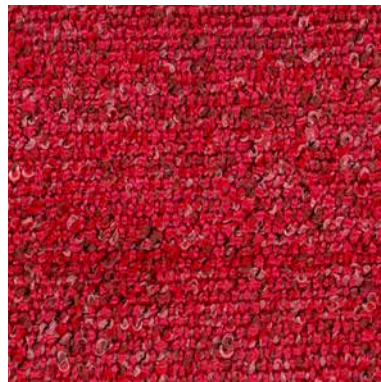




EVERGREEN 101



EVERGREEN 304



EVERGREEN 305



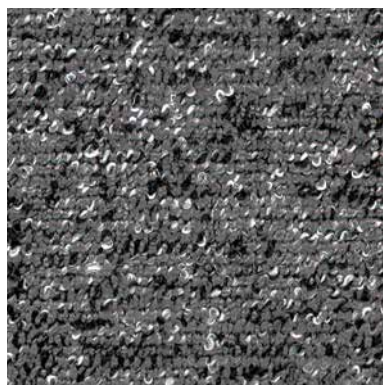
EVERGREEN 400



EVERGREEN 600



EVERGREEN 603



EVERGREEN 605



EVERGREEN 611



EVERGREEN 701



EVERGREEN 802

INFORMAZIONI TECNICHE / TECHNICAL INFORMATION

Composizione / composition	100% PP
Martindale / martindale	50.000 cicli/cycles
Pilling / Pilling	4

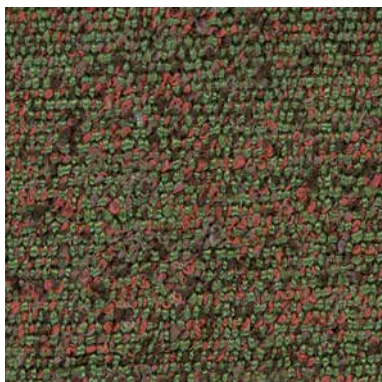
✓ Eco-friendly

✓ anallergico  
hypoallergenic

✓ irrestringibile  
non-shrink

MANUTENZIONE / MAINTENANCE





EVERGREEN 806





EVERGREEN 900

## INFORMAZIONI TECNICHE / TECHNICAL INFORMATION

Composizione / composition

Martindale / martindale

Pilling / Pilling

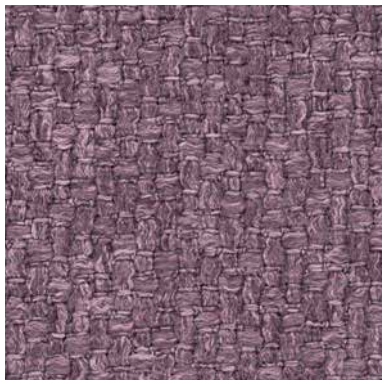
 Eco-friendly anallergico  
hypoallergenic irrestringibile  
non-shrink

## MANUTENZIONE / MAINTENANCE



CAT. E

# Even



EVEN 003



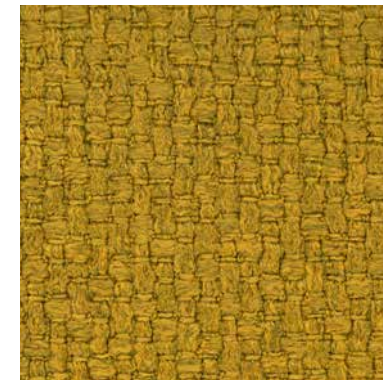
EVEN 111



EVEN 300



EVEN 408



EVEN 503



EVEN 600



EVEN 604



EVEN 608




EVEN 609



EVEN 610

## INFORMAZIONI TECNICHE / TECHNICAL INFORMATION

Composizione / composition	100% PL
Martindale / martindale	50.000 cicli/cycles
Pilling / Pilling	4

 **idrorepellente**  
water repellent

## MANUTENZIONE / MAINTENANCE



CAT. E

## Even



EVEN 705



EVEN 708




EVEN 801



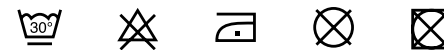
EVEN 901

### INFORMAZIONI TECNICHE / TECHNICAL INFORMATION

Composizione / composition	100% PL
Martindale / martindale	50.000 cicli/cycles
Pilling / Pilling	4

 idrorepellente  
water repellent

### MANUTENZIONE / MAINTENANCE



CAT. E

# Enter



ENTER 006



ENTER 009



ENTER 013



ENTER 020



ENTER 024



ENTER 025



ENTER 030



ENTER 037



ENTER 041



ENTER 044

## INFORMAZIONI TECNICHE / TECHNICAL INFORMATION

Composizione / composition	100% PL
Martindale / martindale	40.000 cicli/cycles
Pilling / Pilling	4

## MANUTENZIONE / MAINTENANCE



CAT. E

# Enter



ENTER 057



ENTER 059



ENTER 062



ENTER 074



ENTER 100



ENTER 101

## INFORMAZIONI TECNICHE / TECHNICAL INFORMATION

Composizione / composition	100% PL
Martindale / martindale	40.000 cicli/cycles
Pilling / Pilling	4

## MANUTENZIONE / MAINTENANCE



CAT. E

# Emery



EMERY 07



EMERY 21



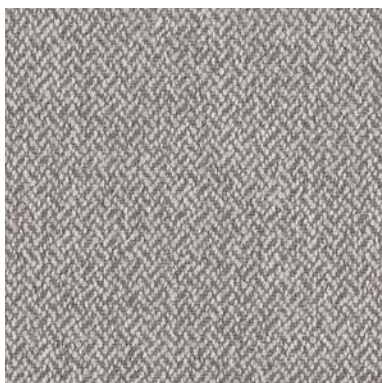
EMERY 24



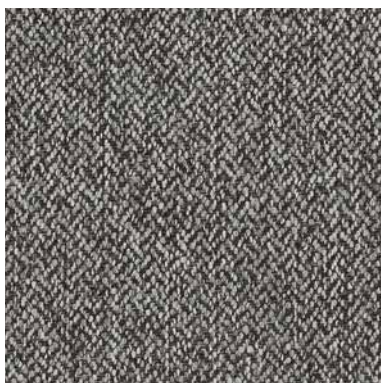
EMERY 25



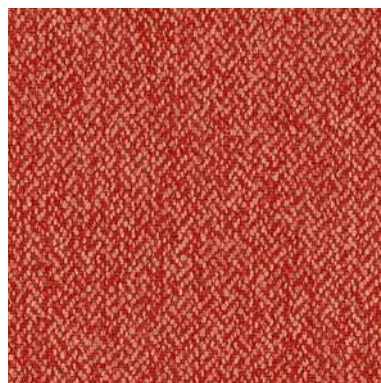
EMERY 30



EMERY 31



EMERY 37



EMERY 44




EMERY 53



EMERY 62

## INFORMAZIONI TECNICHE / TECHNICAL INFORMATION

Composizione / composition	100% PL
Martindale / martindale	40.000 cicli/cycles
Pilling / Pilling	4

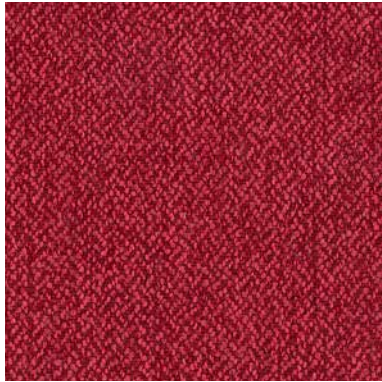
 idrorepellente  
water repellent

## MANUTENZIONE / MAINTENANCE

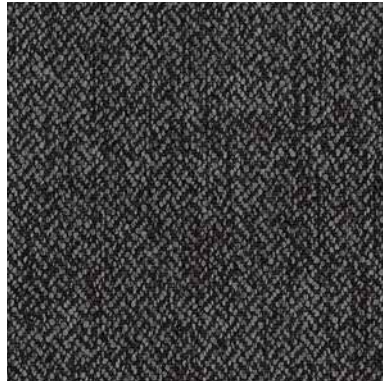


CAT. E

# Emery




EMERY 70



EMERY 74

## INFORMAZIONI TECNICHE / TECHNICAL INFORMATION

Composizione / composition	100% PL
Martindale / martindale	40.000 cicli/cycles
Pilling / Pilling	4

 idrorepellente  
water repellent

## MANUTENZIONE / MAINTENANCE



CAT. E

## Easy Care



EASY CARE 001



EASY CARE 002



EASY CARE 003



EASY CARE 006



EASY CARE 007



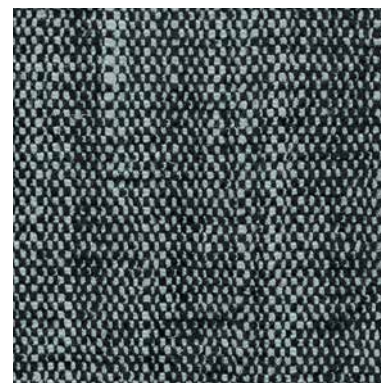
EASY CARE 008



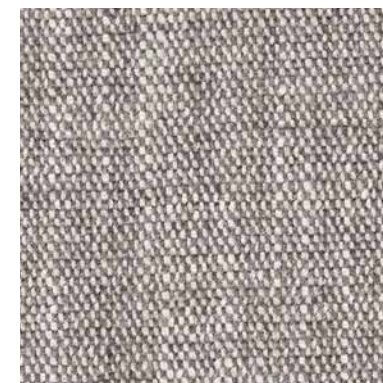
EASY CARE 010



EASY CARE 012




EASY CARE 013





EASY CARE 015

### INFORMAZIONI TECNICHE / TECHNICAL INFORMATION

Composizione / composition	70% PL - 30% LI
Martindale / martindale	50.000 cicli/cycles
Pilling / Pilling	5

 **idrorepellente**  
water repellent

 **irrestringibile**  
non-shrink

 **antimacchia**  
stain resistant

### MANUTENZIONE / MAINTENANCE

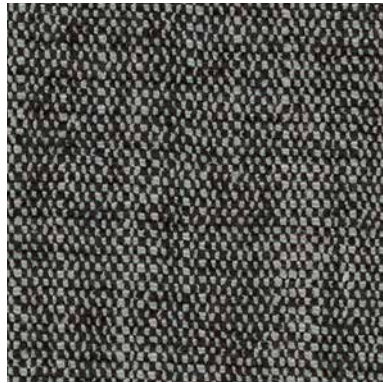


CAT. E

## Easy Care




EASY CARE 016





EASY CARE 017

### INFORMAZIONI TECNICHE / TECHNICAL INFORMATION

Composizione / composition	70% PL - 30% LI
Martindale / martindale	50.000 cicli/cycles
Pilling / Pilling	5

 **idrorepellente**  
water repellent

 **irrestringibile**  
non-shrink

 **antimacchia**  
stain resistant

### MANUTENZIONE / MAINTENANCE



CAT. A

# Atene



ATENE 02



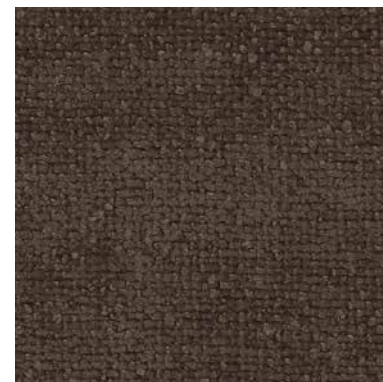
ATENE 03



ATENE 04



ATENE 05



ATENE 06



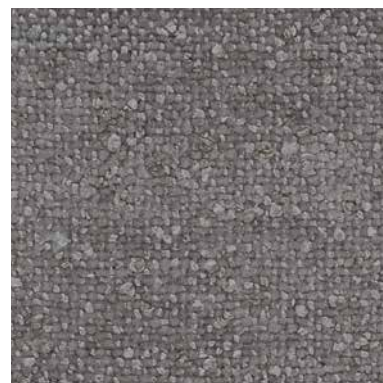
ATENE 10



ATENE 11



ATENE 20




ATENE 23



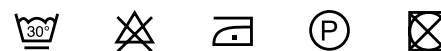
ATENE 24

## INFORMAZIONI TECNICHE / TECHNICAL INFORMATION

Composizione / composition	100% PL
Martindale / martindale	50.000 cicli/cycles
Pilling / Pilling	4

 idrorepellente  
water repellent

## MANUTENZIONE / MAINTENANCE



CAT. A


# Atene



ATENE 29

## INFORMAZIONI TECNICHE / TECHNICAL INFORMATION

Composizione / composition	100% PL
Martindale / martindale	50.000 cicli/cycles
Pilling / Pilling	4

 idrorepellente  
water repellent

## MANUTENZIONE / MAINTENANCE

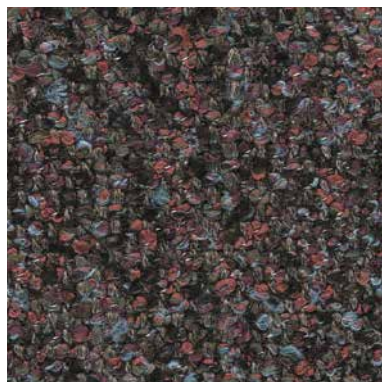


CAT. A

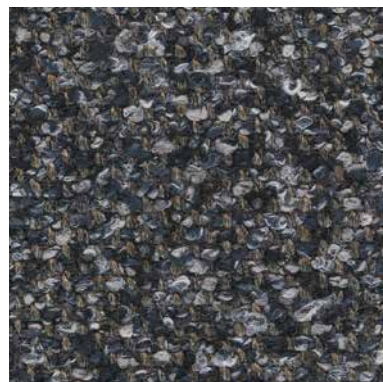
# Andorra



ANDORRA 403



ANDORRA 406



ANDORRA 408



ANDORRA 410



ANDORRA 411



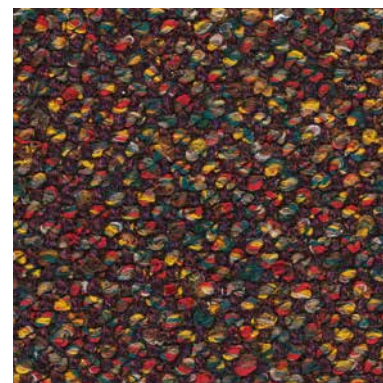
ANDORRA 413



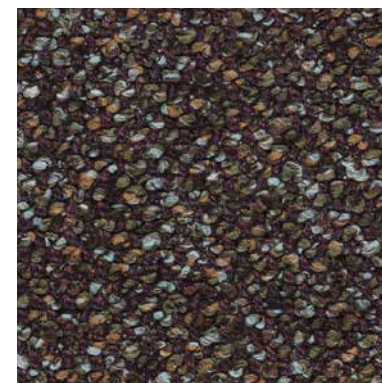
ANDORRA 414



ANDORRA 415



ANDORRA 417



ANDORRA 418

## INFORMAZIONI TECNICHE / TECHNICAL INFORMATION

Composizione / composition	99% PES - 1% PAN
Martindale / martindale	100.000 cicli/cycles
Pilling / Pilling	4

## MANUTENZIONE / MAINTENANCE



CAT. A

# Amalfi



AMALFI 100



AMALFI 101



AMALFI 102



AMALFI 105



AMALFI 110



AMALFI 120



AMALFI 122




AMALFI 127




AMALFI 130

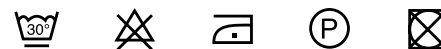
## INFORMAZIONI TECNICHE / TECHNICAL INFORMATION

Composizione / composition	100% PL
Martindale / martindale	85.000 cicli/cycles
Pilling / Pilling	4/5

 idrorepellente  
water repellent

 antimacchia  
stain resistant

## MANUTENZIONE / MAINTENANCE



CAT. A

# After



AFTER 011



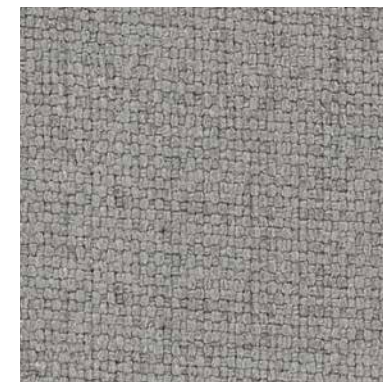
AFTER 033



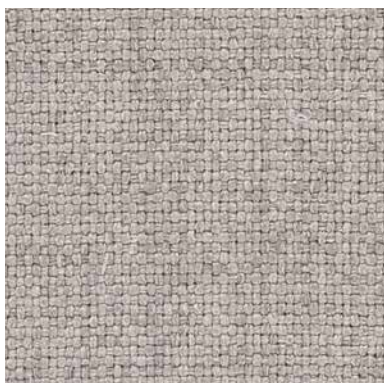
AFTER 043



AFTER 045



AFTER 060



AFTER 061



AFTER 063



AFTER 064




AFTER 076




AFTER 084

## INFORMAZIONI TECNICHE / TECHNICAL INFORMATION

Composizione / composition	100% PL
Martindale / martindale	60.000 cicli/cycles
Pilling / Pilling	5

 idrorepellente  
water repellent

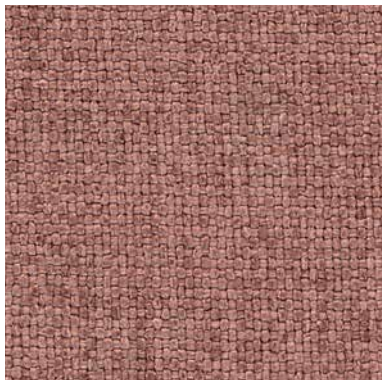
 irrestingibile  
non-shrink

## MANUTENZIONE / MAINTENANCE



CAT. A


After




AFTER 095

INFORMAZIONI TECNICHE / TECHNICAL INFORMATION

Composizione / composition	100% PL
Martindale / martindale	60.000 cicli/cycles
Pilling / Pilling	5

 idrorepellente  
water repellent

 irrestingibile  
non-shrink

MANUTENZIONE / MAINTENANCE

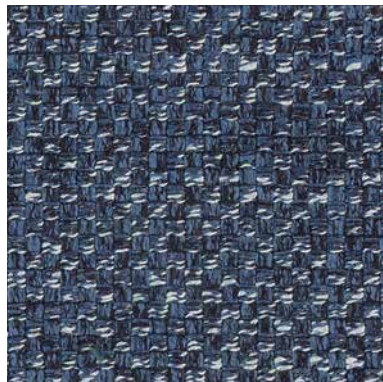


CAT. A

# Adria



ADRIA 207



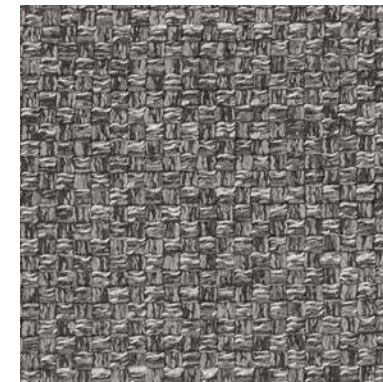
ADRIA 215



ADRIA 225



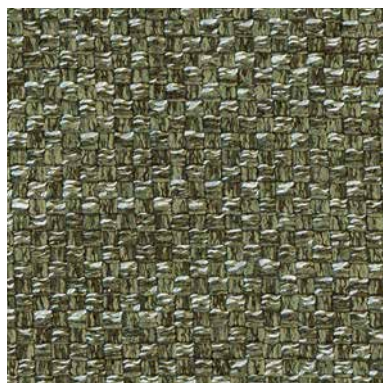
ADRIA 231



ADRIA 232



ADRIA 245



ADRIA 262




ADRIA 275



ADRIA 284

## INFORMAZIONI TECNICHE / TECHNICAL INFORMATION

Composizione / composition	70% PL - 30% VI
Martindale / martindale	30.000 cicli/cycles
Pilling / Pilling	4

 idrorepellente  
water repellent

## MANUTENZIONE / MAINTENANCE



**DITRE  
ITALIA**

31016 Cordignano (Treviso) Zona Industriale Via del Lavoro, 21  
Tel. +39.0438.9999 Fax +39.0438.999993 [www.ditreitalia.com](http://www.ditreitalia.com) [info@ditreitalia.it](mailto:info@ditreitalia.it)

Ditre Italia Products

2025

**Pelle**  
***Leathers***

**DITRE**  
**italia**



VOGUE 401



VOGUE 402



VOGUE 403



VOGUE 404



VOGUE 407



VOGUE 409



VOGUE 410



VOGUE 412



VOGUE 418



VOGUE 421

### INFORMAZIONI TECNICHE / TECHNICAL INFORMATION

Tipologia / Type	pieno fiore / full grain
Origine / origin	pelli bovine / cowhide
Provenienza / provenance	europa / european
Concia / tanning	sali di cromo / chrome salt
Tintura / dye	anilina passante in botte sottovuoto / aniline drum dyeing
Spessore / thickness	1,3/1,5 mm

### TEST FISICI / PHYSICAL TESTS

solidità del colore alla luce: >2/3 scala blu	colour light fastness : >2/3 blu scale
solidità del colore allo strofinio a secco 50 cicli:	colour fastness to the 50 dry-rubbing: >3 grey scale
>3 scala grigi	colour fastness to the 20 wet-rubbing: >2/3 grey scale
solidità del colore allo strofinio a umido 20 cicli:	
>2/3 scala grigi	



VOGUE 422



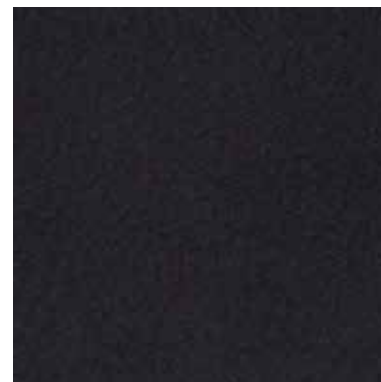
VOGUE 423



VOGUE 424



VOGUE 425



VOGUE 426

### INFORMAZIONI TECNICHE / TECHNICAL INFORMATION

Tipologia / Type	pieno fiore / full grain
Origine / origin	pelli bovine / cowhide
Provenienza / provenance	europa / european
Concia / tanning	sali di cromo / chrome salt
Tintura / dye	anilina passante in botte sottovuoto / aniline drum dyeing
Spessore / thickness	1,3/1,5 mm

### TEST FISICI / PHYSICAL TESTS

solidità del colore alla luce: >2/3 scala blu	colour light fastness : >2/3 blu scale
solidità del colore allo strofinio a secco 50 cicli:	colour fastness to the 50 dry-rubbing: >3 grey scale
>3 scala grigi	colour fastness to the 20 wet-rubbing: >2/3 grey scale
solidità del colore allo strofinio a umido 20 cicli:	
>2/3 scala grigi	



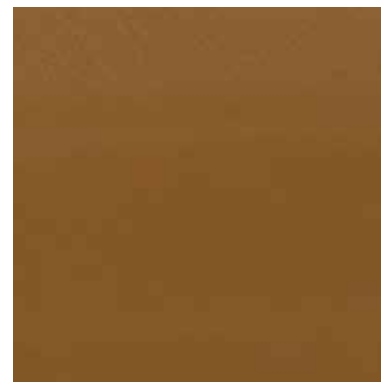
VIENNA 001



VIENNA 002



VIENNA 003



VIENNA 004



VIENNA 006



VIENNA 007



VIENNA 008



VIENNA 010



VIENNA 011



VIENNA 012

### INFORMAZIONI TECNICHE / TECHNICAL INFORMATION

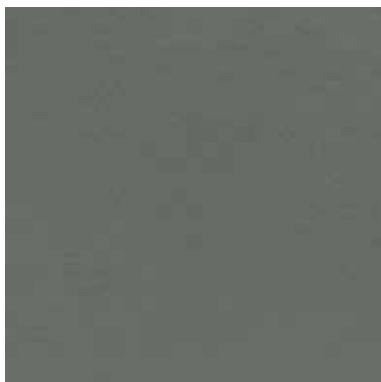
Tipologia / Type	pieno fiore / full grain
Origine / origin	pelli bovine / cowhide
Provenienza / provenance	europa / european
Concia / tanning	sali di cromo / chrome salt
Tintura / dye	anilina passante in botte sottovuoto /aniline drum dyeing
Spessore / thickness	1,3/1,5 mm

### TEST FISICI / PHYSICAL TESTS

solidità del colore alla luce: >4/5 dopo 72 ore di esposizione	colour light fastness : > 4/5 after 72 h of exposure
solidità del colore allo strofinio a secco 1000 cicli	colour fastness to the 1000 dry-rubbing
solidità del colore allo strofinio a umido 200 cicli	colour fastness to the 200 wet-rubbing



VIENNA 013



VIENNA 014

**INFORMAZIONI TECNICHE / TECHNICAL INFORMATION**

Tipologia / Type	pieno fiore / full grain
Origine / origin	pelli bovine / cowhide
Provenienza / provenance	europa / european
Concia / tanning	sali di cromo / chrome salt
Tintura / dye	anilina passante in botte sottovuoto /aniline drum dyeing
Spessore / thickness	1,3/1,5 mm

**TEST FISICI / PHYSICAL TESTS**

solidità del colore alla luce: >4/5 dopo 72 ore di esposizione	colour light fastness : > 4/5 after 72 h of exposure
solidità del colore allo strofinio a secco 1000 cicli	colour fastness to the 1000 dry-rubbing
solidità del colore allo strofinio a umido 200 cicli	colour fastness to the 200 wet-rubbing



VENICE 001



VENICE 002



VENICE 003



VENICE 004

#### INFORMAZIONI TECNICHE / TECHNICAL INFORMATION

Tipologia / Type	pieno fiore / full grain
Origine / origin	pelli bovine / cowhide
Provenienza / provenance	europea / european
Concia / tanning	sali di cromo / chrome salt
Tintura / dye	all'anilina passante in botte sotto vuoto / aniline through
Spessore / thickness	0,9/1,1 mm

#### TEST FISICI / PHYSICAL TESTS

solidità del colore alla luce: 4/5	colour light fastness : 4/5
solidità del colore allo strofinio a secco: 500 cicli	colour fastness to the dry-rubbing: 500 cycles
solidità del colore allo strofinio a umido: 80 cicli	colour fastness to the wet-rubbing: 80 cycles



POLAR 204



POLAR 207



POLAR 208



POLAR 209



POLAR 210



POLAR 211



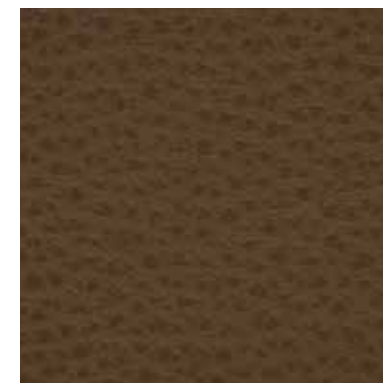
POLAR 212



POLAR 214



POLAR 216



POLAR 217

### INFORMAZIONI TECNICHE / TECHNICAL INFORMATION

Tipologia / Type	fiore corretto/ full grain
Origine / origin	pelli bovine / cowhide
Provenienza / provenance	mondiale / worldwide
Concia / tanning	sali di cromo / chrome salt
Tintura / dye	in botte passante / in barrels
Spessore / thickness	1,2/1,4 mm

### TEST FISICI / PHYSICAL TESTS

solidità del colore alla luce: 5	colour light fastness : 5
solidità del colore allo strofinio a secco 500 cicli: >4	colour fastness to the dry-rubbing 500 cycles: >4
solidità del colore allo strofinio a umido 250 cicli: >4	colour fastness to the wet-rubbing 250 cycles: >4
solidità alla flessione 50.000 cicli: nessun danno	fastness to the bending 50.000: cycles no damage

CAT. PREMIUM

# Polar



POLAR 218



POLAR 223



POLAR 246



POLAR 251



POLAR 257



POLAR 264



POLAR 266



POLAR 270



POLAR 271



POLAR 275

## INFORMAZIONI TECNICHE / TECHNICAL INFORMATION

Tipologia / Type	fiore corretto/ full grain
Origine / origin	pelli bovine / cowhide
Provenienza / provenance	mondiale / worldwide
Concia / tanning	sali di cromo / chrome salt
Tintura / dye	in botte passante / in barrels
Spessore / thickness	1,2/1,4 mm

## TEST FISICI / PHYSICAL TESTS

solidità del colore alla luce: 5	colour light fastness : 5
solidità del colore allo strofinio a secco 500 cicli: >4	colour fastness to the dry-rubbing 500 cycles: >4
solidità del colore allo strofinio a umido 250 cicli: >4	colour fastness to the wet-rubbing 250 cycles: >4
solidità alla flessione 50.000 cicli: nessun danno	fastness to the bending 50.000: cycles no damage

CAT. PREMIUM

## Polar



POLAR 277



POLAR 281



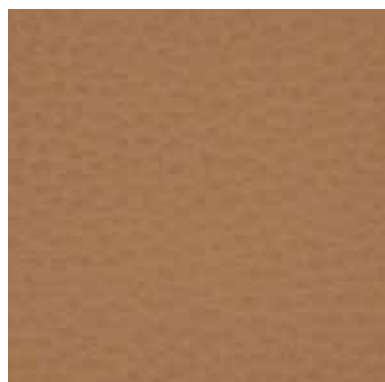
POLAR 284



POLAR 286



POLAR 288



POLAR 295



POLAR 298



POLAR 304



POLAR 398



POLAR 399

### INFORMAZIONI TECNICHE / TECHNICAL INFORMATION

Tipologia / Type	fiore corretto/ full grain
Origine / origin	pelli bovine / cowhide
Provenienza / provenance	mondiale / worldwide
Concia / tanning	sali di cromo / chrome salt
Tintura / dye	in botte passante / in barrels
Spessore / thickness	1,2/1,4 mm

### TEST FISICI / PHYSICAL TESTS

solidità del colore alla luce: 5	colour light fastness : 5
solidità del colore allo strofinio a secco 500 cicli: >4	colour fastness to the dry-rubbing 500 cycles: >4
solidità del colore allo strofinio a umido 250 cicli: >4	colour fastness to the wet-rubbing 250 cycles: >4
solidità alla flessione 50.000 cicli: nessun danno	fastness to the bending 50.000: cycles no damage



LISBONA 202



LISBONA 203



LISBONA 204



LISBONA 209



LISBONA 210



LISBONA 213



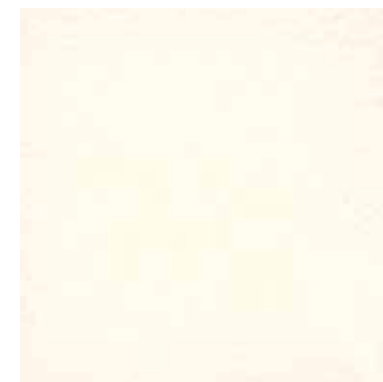
LISBONA 216



LISBONA 218



LISBONA 220



LISBONA 225

### INFORMAZIONI TECNICHE / TECHNICAL INFORMATION

Tipologia / Type	fiore corretto/ full grain
Origine / origin	pelli bovine / cowhide
Provenienza / provenance	europea / european
Concia / tanning	sali di cromo / chrome salt
Tintura / dye	all'anilina / aniline dyed
Spessore / thickness	0,9/1 mm

### TEST FISICI / PHYSICAL TESTS

solidità del colore alla luce: > 7	colour light fastness : > 7
solidità del colore allo strofinio a secco 500 cicli: >4/5	colour fastness to the dry-rubbing 500 cycles: >4/5
solidità del colore allo strofinio a umido 250 cicli: >4/5	colour fastness to the wet-rubbing 250 cycles: >4/5
solidità alla flessione >50.000 cicli	fastness to the bending >50.000 cycles



LISBONA 229



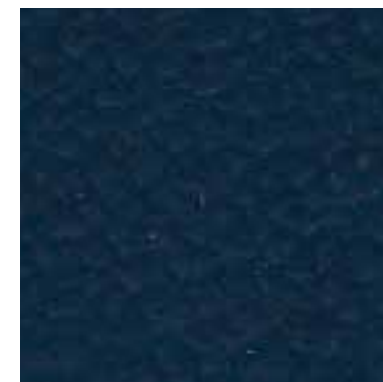
LISBONA 232



LISBONA 233



LISBONA 238



LISBONA 239



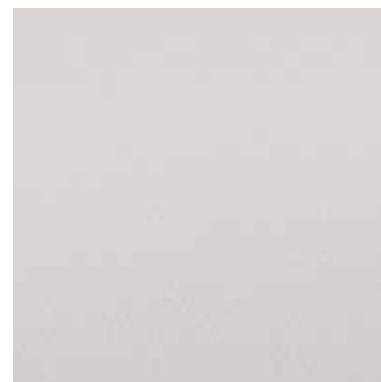
LISBONA 240



LISBONA 241



LISBONA 242



LISBONA 249



LISBONA 259

### INFORMAZIONI TECNICHE / TECHNICAL INFORMATION

Tipologia / Type	fiore corretto/ full grain
Origine / origin	pelli bovine / cowhide
Provenienza / provenance	europea / european
Concia / tanning	sali di cromo / chrome salt
Tintura / dye	all'anilina / aniline dyed
Spessore / thickness	0,9/1 mm

### TEST FISICI / PHYSICAL TESTS

solidità del colore alla luce: > 7	colour light fastness : > 7
solidità del colore allo strofinio a secco 500 cicli: >4/5	colour fastness to the dry-rubbing 500 cycles: >4/5
solidità del colore allo strofinio a umido 250 cicli: >4/5	colour fastness to the wet-rubbing 250 cycles: >4/5
solidità alla flessione >50.000 cicli	fastness to the bending >50.000 cycles



LISBONA 266



LISBONA 267



LISBONA 268



LISBONA 278

#### INFORMAZIONI TECNICHE / TECHNICAL INFORMATION

Tipologia / Type	fiore corretto/ full grain
Origine / origin	pelli bovine / cowhide
Provenienza / provenance	europea / european
Concia / tanning	sali di cromo / chrome salt
Tintura / dye	all'anilina / aniline dyed
Spessore / thickness	0,9/1 mm

#### TEST FISICI / PHYSICAL TESTS

solidità del colore alla luce: > 7	colour light fastness : > 7
solidità del colore allo strofinio a secco 500 cicli: >4/5	colour fastness to the dry-rubbing 500 cycles: >4/5
solidità del colore allo strofinio a umido 250 cicli: >4/5	colour fastness to the wet-rubbing 250 cycles: >4/5
solidità alla flessione >50.000 cicli	fastness to the bending >50.000 cycles

## Toronto (Melbourne)



TORONTO 014



TORONTO 024



TORONTO 026



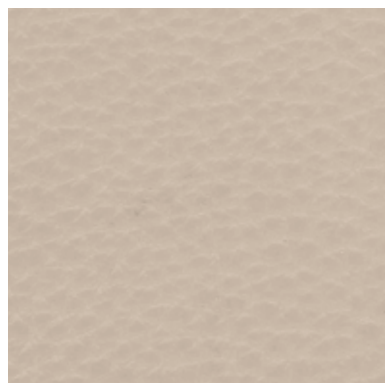
TORONTO 102



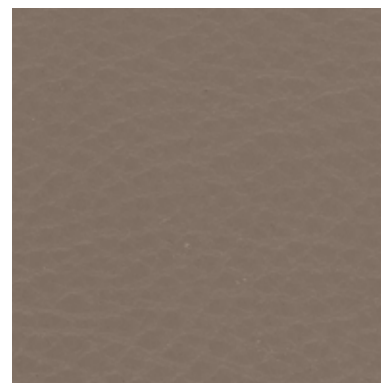
TORONTO 105



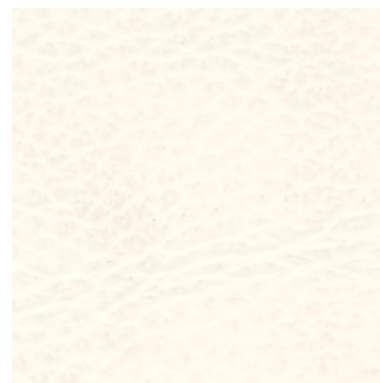
TORONTO 108



TORONTO 109



TORONTO 112



TORONTO 113



TORONTO 200

## INFORMAZIONI TECNICHE / TECHNICAL INFORMATION

Tipologia / Type	fiore corretto/ full grain
Origine / origin	pelli bovine / cowhide
Provenienza / provenance	mondiale / worldwide
Concia / tanning	sali di cromo / chrome salt
Tintura / dye	in botte passante / in barrels
Spessore / thickness	1,3/1,5 mm

## TEST FISICI / PHYSICAL TESTS

solidità del colore alla luce: 4/5 su 5	colour light fastness : 4/5 out of 5
solidità del colore allo strofinio a secco 500 cicli	colour fastness to the dry-rubbing 500 cycles
solidità del colore allo strofinio a umido 250 cicli	colour fastness to the wet-rubbing 250 cycles
solidità alla flessione 50.000 cicli	fastness to the bending 50.000 cycles



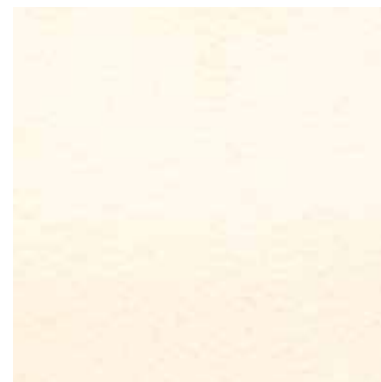
TOKIO 401



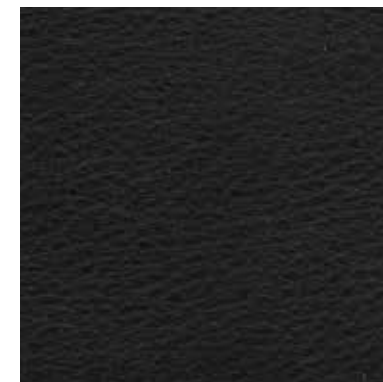
TOKIO 404



TOKIO 406



TOKIO 409



TOKIO 451



TOKIO 500

#### INFORMAZIONI TECNICHE / TECHNICAL INFORMATION

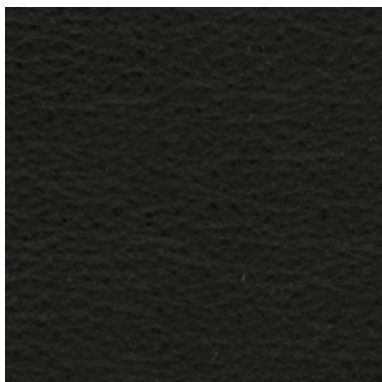
Tipologia / Type	fiore corretto / half grain
Origine / origin	pelli bovine / cowhide
Provenienza / provenance	mondiale / worldwide
Concia / tanning	sali di cromo / chrome salt
Tintura / dye	in botte passante / in barrels
Spessore / thickness	1,2/1,3 mm

#### TEST FISICI / PHYSICAL TESTS

solidità del colore alla luce: 5	colour light fastness : 5
solidità del colore allo strofinio a secco: 500 cicli	colour fastness to the dry-rubbing: 500 cycles
solidità del colore allo strofinio a umido: 250 cicli	colour fastness to the wet-rubbing: 250 cycles

CAT. SOFT

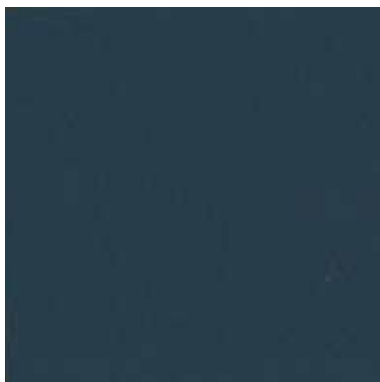
# Sidney



SIDNEY 80



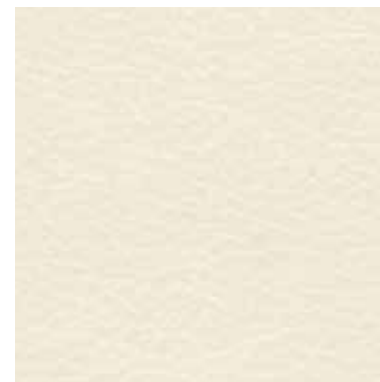
SIDNEY 201



SIDNEY 327



SIDNEY 341



SIDNEY 415



SIDNEY 696



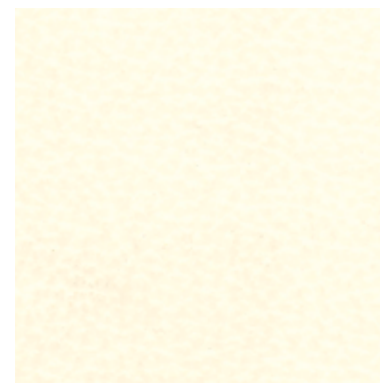
SIDNEY 700



SIDNEY 701



SIDNEY 702



SIDNEY 2000

## INFORMAZIONI TECNICHE / TECHNICAL INFORMATION

Tipologia / Type	mezzo fiore/ half grain
Origine / origin	pelli bovine / cowhide
Provenienza / provenance	mondiale / worldwide
Concia / tanning	sali di cromo / chrome salt
Tintura / dye	in botte passante / in barrels
Spessore / thickness	0,9/1,1 mm

## TEST FISICI / PHYSICAL TESTS

solidità del colore alla luce: 4/5 su 5	colour light fastness : 4/5 out of 5
solidità del colore allo strofinio a secco: 500 cicli	colour fastness to the dry-rubbing: 500 cycles
solidità del colore allo strofinio a umido: 250 cicli	colour fastness to the wet-rubbing: 250 cycles
solidità alla flessione: 50.000 cicli	fastness to the bending: 50.000

**DITRE**  
**italia**

31016 Cordignano (Treviso) Zona Industriale Via del Lavoro, 21  
Tel. +39.0438.9999 Fax +39.0438.999993 [www.ditreitalia.it](http://www.ditreitalia.it) [info@ditreitalia.it](mailto:info@ditreitalia.it)