



FLOYD TABLE

design Piero Lissoni

Coffee tables available in different sizes. Frame made of two 5 mm thick laser-cut steel sheets with a central support in Ø20 mm steel tube, with epoxy polyester powder coating in Gunmetal grey or burnished color. Floor support provided by plastic feet.

Wood top: shaped and beveled 20 mm thick MDF top, veneered in the upper surface only, in charcoal-dyed oak or Stone Oak® with water-based acrylic finish, or in tobacco-dyed oak with acrylic coating; edges and bottom always painted in matte black.

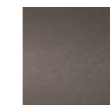
Porcelain stoneware top: shaped 12 mm thick top (straight edge), available in the collection finishes, paired with a 2 mm thick steel sheet support.

Marble top: for the 53x40 cm size only, shaped and beveled 15 mm thick top, paired with a 2 mm thick steel sheet support. Available in Forest Green, Bianco Carrara, Nero Marquinia, Rosso Levanto or Sahara Noir, with satin finish and transparent matte protective coating, or with glossy or matte polyester finish.

Base



Gunmetal Grey
Lacquering

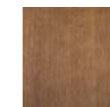


Burnished
Painting

Top



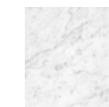
Charcoal-dyed
Oak



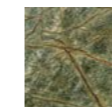
Tobacco-dyed
Oak



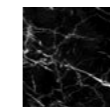
Stone Oak®



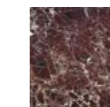
Bianco Carrara
Marble



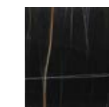
Forest Green
Marble



Nero Marquinia
Marble



Rosso Levanto
Marble



Sahara Noir
Marble

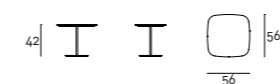


Balance Smoke
Porcelain
Stoneware



Natural Kaolin
Porcelain
Stoneware

Technical Drawings



Notes

Wood is a living material; therefore, it can have slight color and dimension changes. The presence of any non-homogeneous color shades is not to be considered a defect but a quality. Please note that the direct sunlight exposure may alter the wood color; therefore, we recommend the periodic position shift of the objects placed on the furniture for the first months to avoid differences in shades between exposed and covered portions.

STONE OAK®: this wood owes its particular coloring to an entirely natural process. Because of this, some slabs may look more brown than others. Our commitment is to provide you a high-quality product; any differences in color should not be considered as defects.

On request, an additional protective (acrylic solvent) painting is available for the Stone Oak® finishing only. It should be noted that this additional coating slightly changes the natural color and texture of the surface. Although this supplementary painting increases the surface resistance, it is still a natural material; therefore, small superficial stains, due to oil or other substances, must be promptly removed, before being absorbed in depth by the wood. Thus, we recommend regular care and maintenance.

Marble top available only for size 53x40x42cm. Please specify the required finish in the order.

For marble finishing with opaque matt polyester finish, the "Marble" Maintenance Kit is included with the product.