



ILE CLUB DAYBED | OUTDOOR

design Piero Lissoni

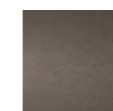
Single or double outdoor daybed, with seat frame in varnished steel with galvanized coating for outdoor use, finished with epoxy powders for outdoor use, sprung with elastic straps, with stainless steel hooks. Backrest structure in outdoor plywood panel with adjustable mechanism. Seat and backrest cushions padding with open cell structure polyurethane foam, covered with polyester fibers and draining fabric cover. Square tube frame in AISI 316 stainless steel with

matte satin finish or AISI 316 stainless steel with epoxy polyester powder coating in Gunmetal grey color or burnished color. Standard base with wheels for the single version 85x188cm only. Upholstery with outdoor fabrics, fully removable with zippers and Velcro fastenings. Adjustable backrest with a 5-position mechanism, up to a height of 82 cm. Seat depth: 124 cm.

Base



Stainless Steel
with Matt Satin
Finish



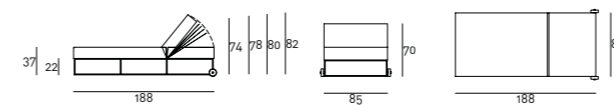
Burnished
Painting



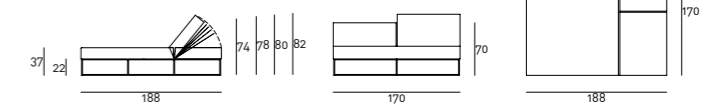
Gunmetal Grey
Lacquering

Technical Drawings

Single with wheels



Double without wheels



Notes

We recommend placing the product on terraces or verandas to guarantee its durability over the years. It is recommended to use a "Protective Cover" to improve the longevity of the product. For further information about the dedicated maintenance, please refer to the technical sheet available in the "Materials" section on our website.

For information on the compatibility of the collection's coverings with each product, please refer to the [compliance sheet](#) provided in the "Materials" section of the website.