

SPIN

Design G. Carollo

TAVOLO | TABLE



TAVOLO | TABLE

Tavolo da pranzo con base centrale in massello di noce canaletta o frassino montata su una piastra in metallo e piano in cristallo temperato (spessore mm.12).

Possibilità di piani su misura. Richiedere quotazione.

Dining-table with base in solid canaletta walnut or ash fixed on a metal ring and tempered glass top (thickness mm. 12).

Possibility of custom sized tops. Please ask for a quotation.

Ess-Tisch mit Gestell aus massivem Nussbaum Canaletta oder Esche auf eine Metallplatte und ESG-Glasplatte (Stärke mm. 12).

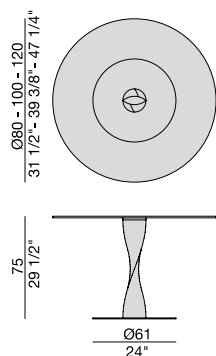
Mit der Möglichkeit der kundenspezifischen Größe. Anfordern Zitat.

Table à manger avec piètement en noyer canaletta ou frêne massif fixé sur une plaque en métal et plateau en verre trempé (épaisseur mm. 12).

Possibilité de réaliser plateaux sur mesure. Demander un devis.

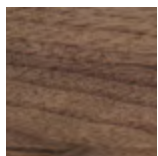
Mesa de comedor con base de nogal canaletta o fresno macizo montada sobre de un disco de metal y tapa en cristal templado (espesor mm. 12).

Posibilidad de tapas a medida. Pedir cotización.

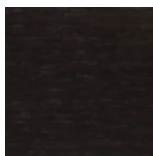


TAVOLO | TABLE

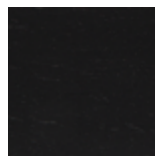
Essenze | Wood



Noce canaletta
Canaletta walnut

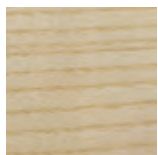


Noce canaletta
tinto moka
Canaletta walnut
moka stained



Noce canaletta
tinto wengè
Canaletta walnut
wengè stained

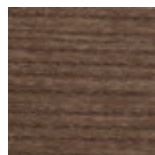
Essenze | Wood



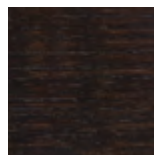
Frassino naturale
Natural ash



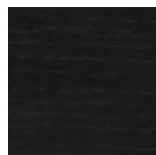
Frassino
tinto canapa
Ash canapa stained



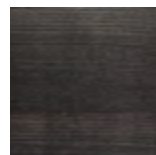
Frassino
tinto noce canaletta
Ash canaletta walnut
stained



Frassino
tinto moka
Ash moka stained

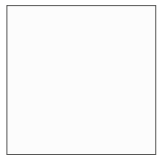


Frassino
tinto wengè
Ash wengè stained



Frassino
tinto grigio
Ash grey stained

Laccato opaco poro chiuso | Matt Lacquered closed pore



Bianco
White
(RAL 9016)



Avorio
Ivory
(RAL 1013)



Argilla
Argilla
(RAL 7006)



Cioccolato
Chocolate
(RAL 8019)



Nero
Black
(RAL 9005)



Iron
Iron
(RAL 7011)



Granata
Granata
(NCS S4050Y90R)

Laccato opaco poro aperto | Matt Lacquered open pore



Bianco
White
(RAL 9016)



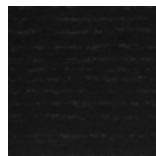
Avorio
Ivory
(RAL 1013)



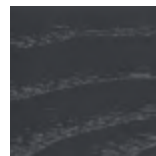
Argilla
Argilla
(RAL 7006)



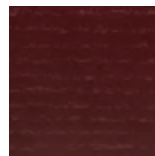
Cioccolato
Chocolate
(RAL 8019)



Nero
Black
(RAL 9005)



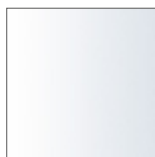
Iron
Iron
(RAL 7011)



Granata
Granata
(NCS S4050Y90R)

TAVOLO | TABLE

Cristallo | Glass

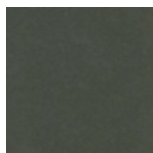


Trasparente
Transparent

Metallo | Metal



Cromato
Chromed



Grigio Peltro
Grey Pewter

SPIN ROCK

Design G. Carollo

TAVOLO | TABLE

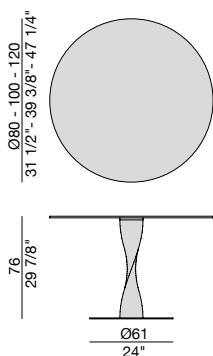
Tavolo da pranzo con base centrale in massello di noce canaletta o frassino montata su una piastra in metallo e piano in Rock (spessore mm. 6). Sottopiano laccato nero opaco.

Dining-table with base in solid canaletta walnut or ash fixed on a metal ring and top in Rock (thickness mm. 6). Black matt lacquered top support.

Ess-Tisch mit Gestell aus massivem Nussbaum Canaletta oder Esche auf eine Metallplatte und Platte aus Rock (Stärke mm. 6). Platte-Unterstützung schwarz matt lackiert.

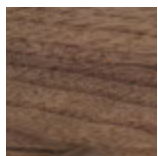
Table à manger avec piétement en noyer canaletta ou frêne massif fixé sur une plaque en métal et plateau en Rock (épaisseur mm. 6). Plateau de support laqué noir mat.

Mesa de comedor con base de nogal canaletta o fresno macizo montada sobre de un disco de metal y tapa en Rock (espesor mm. 6). Tapa de soporte lacada negro mate.

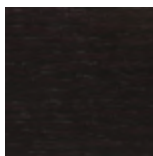


TAVOLO | TABLE

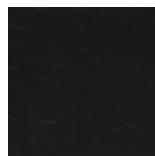
Essenze | Wood



Noce canaletta
Canaletta walnut

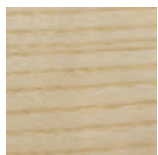


Noce canaletta
tinto moka
Canaletta walnut
moka stained



Noce canaletta
tinto wengè
Canaletta walnut
wengè stained

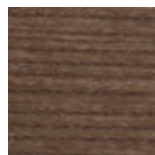
Essenze | Wood



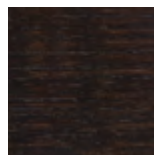
Frassino naturale
Natural ash



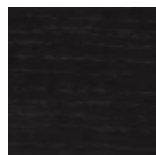
Frassino
tinto canapa
Ash canapa stained



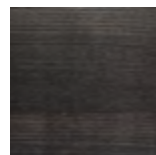
Frassino
tinto noce canaletta
Ash canaletta walnut
stained



Frassino
tinto moka
Ash moka stained

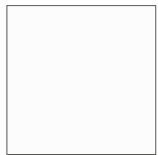


Frassino
tinto wengè
Ash wengè stained

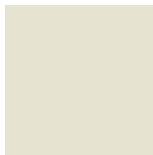


Frassino
tinto grigio
Ash grey stained

Laccato opaco poro chiuso | Matt Lacquered closed pore



Bianco
White
(RAL 9016)



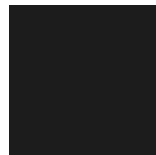
Avorio
Ivory
(RAL 1013)



Argilla
Argilla
(RAL 7006)



Cioccolato
Chocolate
(RAL 8019)



Nero
Black
(RAL 9005)



Iron
Iron
(RAL 7011)



Granata
Granata
(NCS S4050Y90R)

Laccato opaco poro aperto | Matt Lacquered open pore



Bianco
White
(RAL 9016)



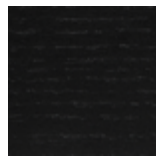
Avorio
Ivory
(RAL 1013)



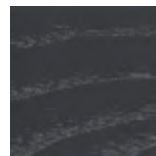
Argilla
Argilla
(RAL 7006)



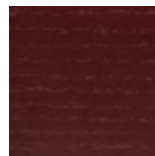
Cioccolato
Chocolate
(RAL 8019)



Nero
Black
(RAL 9005)



Iron
Iron
(RAL 7011)



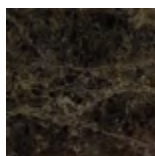
Granata
Granata
(NCS S4050Y90R)

TAVOLO | TABLE

Rock | *Rock*



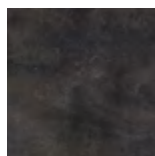
Calacatta opaco
matt Calacatta



Emperador opaco
matt Emperador



Pearl opaco
matt Pearl

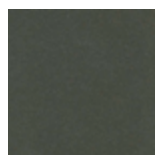


Black Oxide opaco
matt Black Oxide

Metallo | *Metal*



Cromato
Chromed



Grigio Peltro
Grey Pewter