



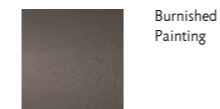
PARADIGMA

design Marco Lavit

Mirror Ø110 cm with a squared central part and four "half-moon" shaped external elements fixed to a 19 mm thick structure in MDF laquered in mat black with a fixing and regulation wall system. Each element has an MDF panel with 2 mm thick metal insert and a steel frame covered with a 3 mm thick mirror. Metal parts painted with burnished epoxy powder finishing.

The mirror can be accessorised with a solid oak shelf and/or vase, which can be placed and fixed along the rail between the central element and the lunettes through magnetic details integrated in the accessories; the parts of the accessories in contact with the mirror parts are covered in felt.

Structure

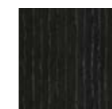


Burnished
Painting

Shelf and Vase



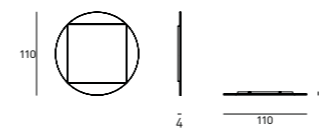
Natural Oak



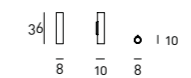
Charcoal-dyed
Oak

Technical Drawings

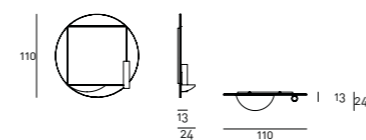
Mirror



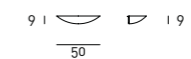
Vase



Mirror with accessories



Shelf



Notes

Notes for accessories with magnets:
 - Do not place the magnets near to heat sources which could ruin the magnetic characteristics even permanently (do not exceed temperatures above 80°);
 - The use of magnets is particularly contraindicated for Pacemaker wearers.
 - The shelf cannot be placed in the upper joint. The vase cannot be placed in the upper and lower joints.

Wood is a living material; therefore, it can have slight color and dimension changes. The presence of any non-homogeneous color shades is not to be considered a defect but a quality.

