



ETOILE | INDOOR - OUTDOOR

design Marco Carini

High bar table available for indoor and outdoor use.

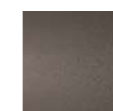
Indoor version: frame in steel with Ø20 mm legs and 20x10 mm braces with epoxy polyester powder coating in Gunmetal grey or burnished color. Wooden top, in veneered MDF available in natural and charcoal dyed oak finishes, or in Stone Oak® with water-based coating, or in tobacco-dyed oak or multilayer wood veneer Striped Grey, with acrylic coating. Marble and stone top available in Nero Marquinia, Bianco Carrara, Rosso Levanto, Sahara Noir or Forest Green versions, and natural matte protective coating, or glossy/matte polyester finish, or in Black Absolute Zimbabwe granite or Noai®. Floor support provided interchangeable tips in black plastic material or felt.

Outdoor version: frame in AISI 304 stainless steel with Ø20 mm legs and 20x10 mm braces with epoxy polyester powder coating in Gunmetal grey or burnished color. Top available in Absolute Black Zimbabwe Granite or Noai®. Floor support provided interchangeable tips in black plastic material. All the tabletops are 20 mm thick and are fixed to the frame using screws. Bag hooks are also provided, made of 2 mm thick AISI 304 stainless steel sheet, shaped and with epoxy polyester powder coating in the same finish as the frame.

Structure



Gunmetal Grey
Lacquering
(In-Outdoor)



Burnished
Painting
(In-Outdoor)

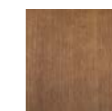
Top



Natural Oak
(Indoor)



Charcoal-dyed
Oak
(Indoor)



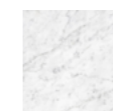
Tobacco-dyed
Oak
(Indoor)



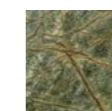
Striped Grey
(Indoor)



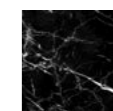
Stone Oak®
(Indoor)



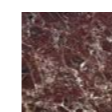
Bianco Carrara
Marble
(Indoor)



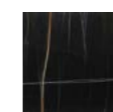
Forest Green
Marble
(Indoor)



Nero Marquinia
Marble
(Indoor)



Rosso Levanto
Marble
(Indoor)



Sahara Noir
Marble
(Indoor)

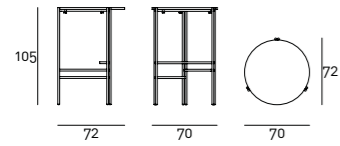


Black Absolute
Zimbabwe
Granite
(In-Outdoor)



Noai®
(In-Outdoor)

Technical Drawings



Notes

For the OUTDOOR version, we recommend placing the product on terraces or verandas to guarantee its durability over the years. It is recommended to use a "Protective Cover" to improve the longevity of the product. For further information about the dedicated maintenance, please refer to the technical sheet available in the "Materials" section on our website.

GRANITE FINISH: of uniform colour, granite is a hard stone of volcanic origin and is an "intrusive rocks", which emerge from solidified magma inside the earth's crust; for its particular nature, granite is a very resistant material to abrasion and compression and easy to be maintained.

Wood is a living material; therefore, it can have slight color and dimension changes. The presence of any non-homogeneous color shades is not to be considered a defect but a quality. Please note that the direct sunlight exposure may alter the wood color; therefore, we recommend the periodic position shift of the objects placed on the furniture for the first months to avoid differences in shades between exposed and covered portions.

STRIPED GREY: it is a decorative multilaminar wood veneer, always finished with a transparent acrylic painting, which features exclusive patterns reproducing the natural characteristics of wood. We would like to remind you that, being a natural and living wooden material, it may present non-homogeneous colour shades, which are peculiarities of the material itself.

STONE OAK®: this wood owes its particular coloring to an entirely natural process. Because of this, some slabs may look more brown than others. Our commitment is to provide you a high-quality product; any differences in color should not be considered as defects.

On request, an additional protective (acrylic solvent) painting is available for the Stone Oak® finishing only. It should be noted that this additional coating slightly changes the natural color and texture of the surface. Although this supplementary painting increases the surface resistance, it is still a natural material; therefore, small superficial stains, due to oil or other substances, must be promptly removed, before being absorbed in depth by the wood. Thus, we recommend regular care and maintenance.

NOAI®: it is an innovative natural biocomposite, made with raw earth, hemp fibers, precious quartz, and natural mineral oxides, which give it photocatalytic properties. A product of the circular economy, it transforms inert and plant-based materials into a sustainable alternative to traditional coatings such as ceramic, stone, terracotta, and wood. Its low-impact, non-firing production process reduces environmental impact and promotes the well-being of both humans and nature.

For the marble top version please specify the required finish in the order.

For marble finishing with opaque matt polyester finish, the "Marble" Maintenance Kit is included with the product.





