

*by Lassen.*  
Copenhagen



PRODUCT SHEET

**Ingeborg, Sofa**  
*by Flemming Lassen*

# Ingeborg, Sofa

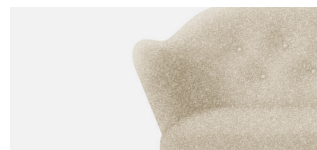
BY FLEMMING LASSEN

The Ingeborg Sofa is a beautiful and expressive 2,5 pers. lounge sofa, that originally is designed in 1940 by Flemming Lassen. The charming and elegant sofa, that is named after Flemming Lassen's mother, Ingeborg Winding, has the characteristically curvy armrests, a buttoned back and legs made from hardwood. Ingeborg Sofa is based on the same design expression as lounge chair Ingeborg, and together the two now form a matching duo. The elegant size and design of the sofa is beautiful to look at from all angles, which allows you to place the sofa anywhere in the room without taking too much space. The elegant, curvy armrests add character to the design and give the impression of a warm embrace. The lounge sofa was initially presented at the Cabinetmakers' Guild Competition in 1940, which took place at the Museum of Industrial Art in Copenhagen. The lounge sofa was originally designed specifically for a new estate, but has occasionally been spotted at different auctions, which indicated that a small number of sofas was produced. by Lassen is therefore pleased to be able to reintroduce this beautiful and iconic design by Flemming Lassen.

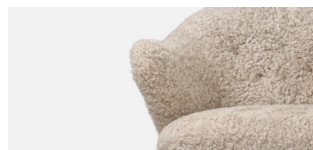


## PRODUCT OPTIONS

### SEAT



WITH UPHOLSTERY



WITH SHEEPSKIN

### BASE



NATURAL OAK



DARK STAINED OAK

## SPEC OPTIONS

Available in fabrics from our upholstery programme. Standard lead times apply.

For custom upholstery, please refer to the guiding textile/leather consumption:

COM: 4,1 m / 4,51 yds

COL: 9 m<sup>2</sup> / 96,93 sqft

Prices excl. custom upholstery are equal to Price Category 1 Textile or Leather. Contact Sales support for approval of custom upholstery and to place your order.

The above textile consumption is only valid for textile rolls with a width equal to or greater than 140 cm. For smaller textile rolls, please contact Sales Support for guidance. For textile with pattern, please expect a higher usage for correct pattern fitting. Please contact Sales Support for guidance.

# Ingeborg, Sofa

BY FLEMMING LASSEN

## TECHNICAL SPECIFICATIONS

### PRODUCT TYPE

Sofa

### COLLI

1

### ENVIRONMENT

Indoor

### DIMENSIONS

H: 76 cm / 29,9"

SH: 40 cm / 15,7"

W: 160 cm / 62,9"

D: 76 cm / 29,9"

### COLOUR

#### Seat

Dependent upon selected upholstery

#### Base

Natural oak

Dark stained oak

### MATERIALS

Foam, oak, plywood, steel, webbing / belts, wadding

### WEIGHT

65 kg / 143,3 lb

### TEST

ANSI Bifma and EN standard

### CERTIFICATIONS

N / A

### PACKAGING TYPE

Brown box

### PACKAGING MEASUREMENTS (H x W x D)

100 cm x 93 cm x 170 cm / 39,4" x 36,6" x 66,9"

### MATERIALS & MAINTENANCE

Please visit [menuspace.com](https://www.menuspace.com) for materials, care and maintenance instructions.