



RAKI

design Piero Lissoni

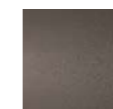
Tub armchair made of one-piece shell in poplar curved plywood with differentiated density polyurethane foam padding covered with a lining made of polyester fiber, with needle-treatment and resin-coated, coupled with a polyamide velveteen backing. Seat cushion in polyurethane foam covered with a lining made of 100% polyether, coupled with a thermo fixed polyamide velveteen backing. Floor support provided by adjustable plastic tips.

Also available with conical steel tube frame and legs, with epoxy polyester powder in Gunmetal grey or burnished color. The base is fixed to the shell with screws. Floor support provided by interchangeable tips in black plastic or felt. Fabric or leather upholstery, fully removable with zippers and Velcro fastenings, and, for the version with "feet", by removing the base and the under-seat pan from the shell. Seat depth: 45 cm.

Legs



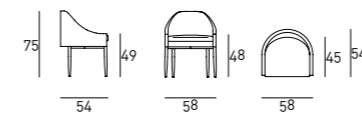
Gunmetal Grey
Lacquering



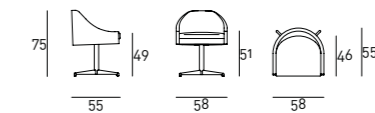
Burnished
Painting

Technical Drawings

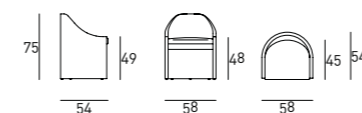
Armchair with metal legs



Armchair with swivel base



Tub armchair



Notes

For information on the compatibility of the collection's coverings with each product, please refer to the [compliance sheet](#) provided in the "Materials" section of the website.

For leather coverings the "Leather A" or "Leather B" Maintenance Kit is included with the product.



