

PIETBOON

# COTTONS

## FABRICS P1

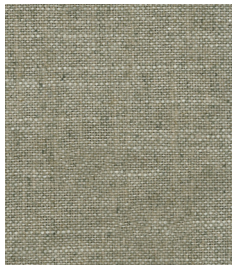
### FEATURES

---

Composition	100% Cotton
Width	140 cm
Abrasion	65.000 martindale
Colour fastness	4/5 dep. on colour
Cleaning	Dry cleaning or visit <a href="http://www.pietboon-care.nl">www.pietboon-care.nl</a>
CAL 117 TEST	Pass
NFPA 260	Pass
BS 5852 0	Pass
DIN EN ISO 1021 Part I	Pass

### SAMPLES

---



COTTONS 54



COTTONS 11



COTTONS 16



COTTONS 58



COTTONS 21



COTTONS 07



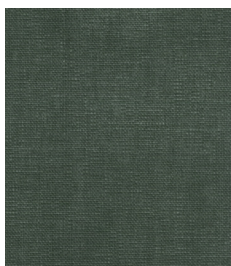
COTTONS 25



COTTONS 60



COTTONS 40



COTTONS 19



COTTONS 18



COTTONS 53

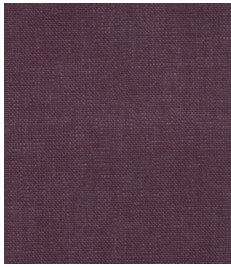
PIETBOON

# COTTONS

## FABRICS P1

SAMPLES

---



COTTONS 65



COTTONS 28



COTTONS 12



COTTONS 59



COTTONS 49



COTTONS 36



COTTONS 67



COTTONS 23

# PIETBOON

## FLAX FABRICS P3

### FEATURES

---

Composition	59% Linen, 18% Cotton, 15% Viscose, 8% Polyester
Width	140 cm
Abrasion	40.000 martindale
Colour fastness	5/6 dep. on colour
Cleaning	Dry cleaning or visit <a href="http://www.pietboon-care.nl">www.pietboon-care.nl</a>
BS 5852 0	Pass
BS 5852 1	Pass

### SAMPLES

---



FLAX 1



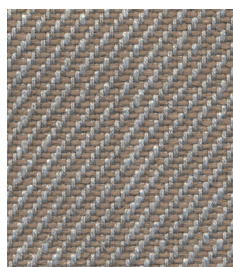
FLAX 8



FLAX 10



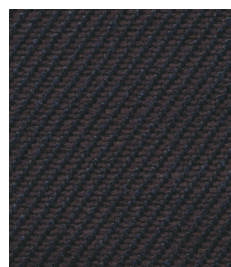
FLAX 6



FLAX 9



FLAX 2



FLAX 3

# PIETBOON

## OXFORD FABRICS P3

### FEATURES

---

Composition	39% Linen, 27% Jute, 24% Viscose, 10% Cotton
Width	140 cm
Weight	1000 G/lm
Abrasion	30.000 martindale
Colour fastness	4/5 dep. on colour
Cleaning	Dry cleaning or visit <a href="http://www.pietboon-care.nl">www.pietboon-care.nl</a>
BS 5852 0	Pass
BS 5852 1	Pass

### SAMPLES

---



OXFORD 2



OXFORD 27



OXFORD 4



OXFORD 55



OXFORD 58



OXFORD 28



OXFORD 54



OXFORD 18

# PIETBOON

## TABBY FABRICS P1

### FEATURES

---

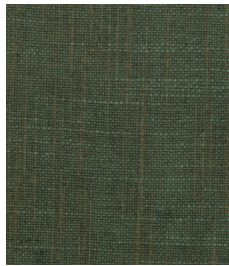
Composition	70% Viscose, 30% Linen
Width	140 cm
Abrasion	20.000 martindale
Colour fastness	4/5 dep. on colour
Cleaning	Dry cleaning or visit <a href="http://www.pietboon-care.nl">www.pietboon-care.nl</a>
BS 5852 0	Pass

### SAMPLES

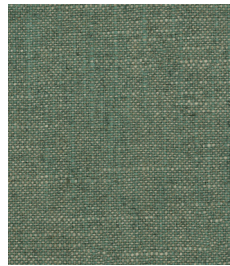
---



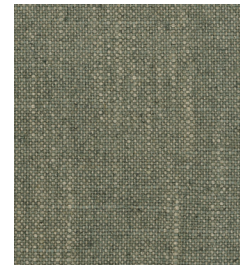
TABBY 1



TABBY 2



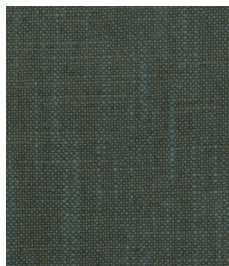
TABBY 4



TABBY 6



TABBY 7



TABBY 9



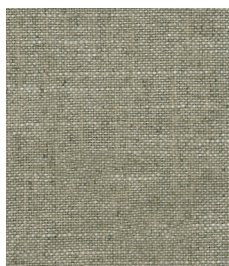
TABBY 11



TABBY 12



TABBY 16



TABBY 18

# PIETBOON

## COTTONS

### FABRICS P1

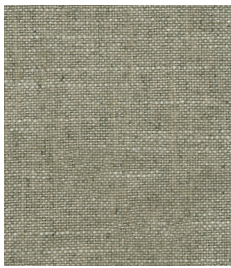
#### FEATURES

---

Composition	100% Cotton
Width	140 cm
Abrasion	65.000 martindale
Colour fastness	5(1-8) Dep. on colour
Cleaning	Dry cleaning or visit <a href="http://www.pietboon-care.nl">www.pietboon-care.nl</a>
CAL TB 117 test	Pass
BS 5852 0	Pass
BS 5852 1	Fail/Pass with after treatment
DIN EN ISO 1021 PART I	Pass
DIN EN ISO 1021 PART II	Fail
NFPA 260	Pass

#### SAMPLES

---



COTTONS 54



COTTONS 11



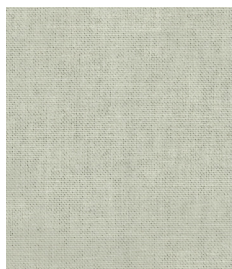
COTTONS 16



COTTONS 58



COTTONS 21



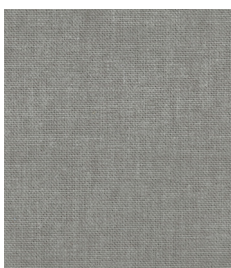
COTTONS 07



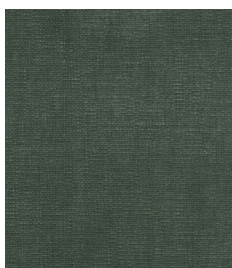
COTTONS 25



COTTONS 60



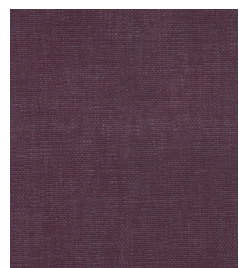
COTTONS 40



COTTONS 19



COTTONS 18



COTTONS 65

PIETBOON

# COTTONS

FABRICS P1

SAMPLES

---



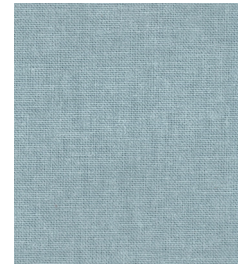
COTTONS 28



COTTONS 12



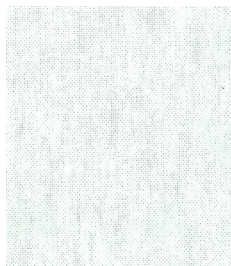
COTTONS 59



COTTONS 49



COTTONS 36



COTTONS 67



COTTONS 23

# PIETBOON

## BLOOM

### HIGH PEROMANCE FABRICS P3

#### FEATURES

---

Composition	54% polyacrylic, 46% polyester
Width	140 cm
Weight	740 g/lm
Abrasion	100.000 martindale
Colour fastness	4/5
Cleaning	Machine wash 40 degrees celcius or visit <a href="http://www.pietboon-care.nl">www.pietboon-care.nl</a>
CAL TB 117 test	unknown
BS 5852 0	unknown
BS 5852 1	unknown
DIN EN ISO 1021 PART I	unknown
DIN EN ISO 1021 PART II	unknown
NFPA 260	unknown

#### SAMPLES

---



BLOOM 01-407



BLOOM 02-413



BLOOM 01-405



BLOOM 03-404



BLOOM 04-406



BLOOM 05-403



BLOOM 06-411



BLOOM 07-410



BLOOM 08-409



BLOOM 09-408



BLOOM 10-402



BLOOM 11-401



BLOOM 12-412



# PIETBOON

## FOREST

### HIGH PERFORMANCE FABRICS

#### FEATURES

NR.	01-01 03-05, 05-04, 07-03, 09-10, 11-09, 13-11, 15-02	02-17, 04-271, 06-272, 08-02, 10-276, 12-273, 14-274, 16-1000
COMPOSITION	100% PC	100% PC
WIDTH	140	140
WEIGHT	1080 G/LM	614 G/LM
ABRASION (MARTINDALE)	40.000	35.000
COLOUR FASTNESS	ISO 4-5	ISO 4-5
CLEANING	MACHINE WASH 40 DEGREES CELCIUS	MACHINE WASH 40 DEGREES CELCIUS
CALL TB 117	UNKNOWN	PASS
BS 5852 0	UNKNOWN	PASS
BS 5852 1	UNKNOWN	PASS
DIN EN ISO PART I	UNKNOWN	UNKNOWN
DIN EN ISO PART II	UNKNOWN	UNKNOWN
NGPA 260	UNKNOWN	UNKNOWN

#### SAMPLES



FOREST  
01-01 **P3**



FOREST  
02-17 **P2**



FOREST  
03-05 **P3**



FOREST  
04-271 **P2**



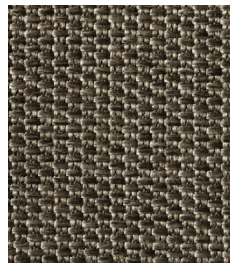
FOREST  
05-04 **P3**



FOREST  
06-272 **P2**



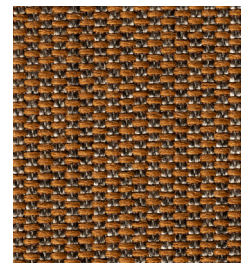
FOREST  
07-03 **P3**



FOREST  
08-02 **P2**



FOREST  
09-10 **P3**



FOREST  
10-276 **P2**

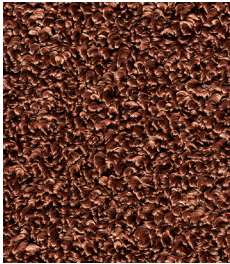
# PIETBOON

## FOREST

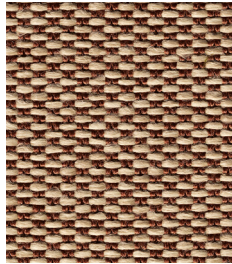
### HIGH PERFORMANCE FABRICS

#### SAMPLES

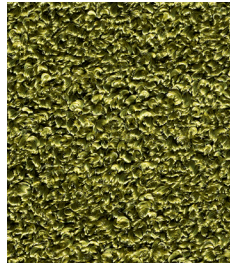
---



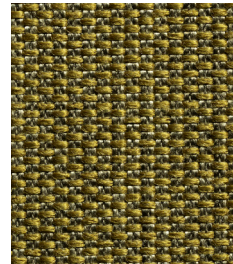
FOREST  
11-09 **P3**



FOREST  
12-273 W **P2**



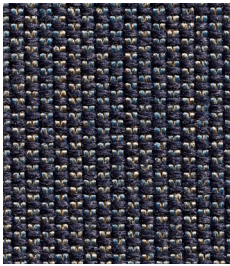
FOREST  
13-11 **P3**



FOREST  
14-274 **P2**



FOREST  
15-02 **P3**



FOREST  
16-1000 **P2**