

top

Glass
Vetro

CAT. B



TEB1
Extralight glass lacquered milky white
Vetro extrachiaro laccato bianco latte



TEC1
Extralight glass lacquered mocha
Vetro extrachiaro laccato caffè



TEC2
Extralight glass lacquered clay
Vetro extrachiaro laccato creta



TEC3
Extralight glass lacquered cement
Vetro extrachiaro laccato col. cemento



TER4
Extralight glass lacquered rust
Vetro extrachiaro laccato col. ruggine



TEV2
Extralight glass lacquered moss green
Vetro extrachiaro laccato col. muschio



TEN1
Extralight glass lacquered black
Vetro extrachiaro laccato nero

CAT. D



TEM6
Vetro extrachiaro laccato col. tabacco
Extralight glass lacquered tobacco



TES1
Vetro extrachiaro laccato champagne
Extralight glass lacquered champagne

Frosted glass
Vetro acidato

CAT. E



AEB1
Extralight glass lacquered mocha
Vetro extrachiaro laccato caffè



AEC2
Frosted clay glass
Vetro acidato creta



AEC3
Frosted cement glass
Vetro acidato col. cemento

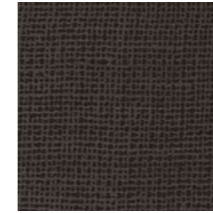


AES1
Frosted champagne glass
Vetro acidato champagne

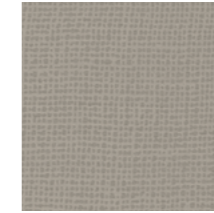
Net glass



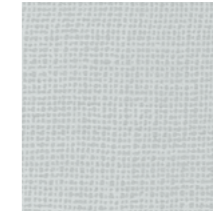
NEB1
White Net glass
Net glass bianco



NEC1
Mocha Net glass
Net glass caffè



NEC2
Clay Net glass
Net glass creta



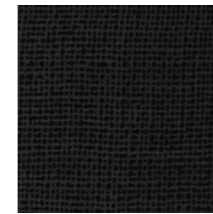
NEC3
Cement Net glass
Net glass col. cemento



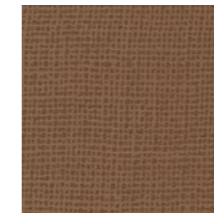
NER4
Rust Net glass
Net glass col. ruggine



NEV2
Moss green Net glass
Net glass col. muschio



NEN1
Black Net glass
Net glass nero



NEM6
Tobacco Net glass
Net glass col. tabacco



NES1
Champagne Net glass
Net glass champagne

Materia



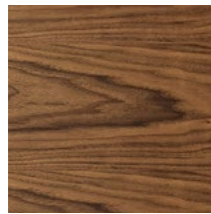
MESP
Pearly materia glass
Vetro materia perlato



MBSP
Bronzed materia glass
Vetro materia bronzo

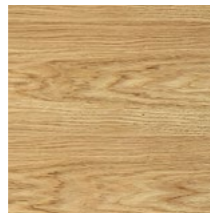
Wood

Legni



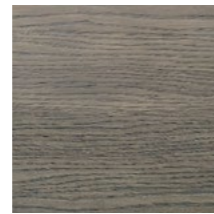
NC

Canaletto walnut
Noce Canaletto



RN

Natural oak wood
Rovere naturale



RG

Grey lacquered oak
Rovere tinto grigio



WG

Wengé-stained oak
Rovere tinto wengé

HPL



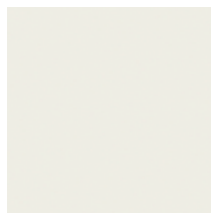
HB

White black edge
Bianco bordo nero

Ceramic

Ceramica

Categoria CE1



CT

Ceramic titanio
Ceramica titanio



CJ

Ivory black ceramic
Ceramica Ivory Black



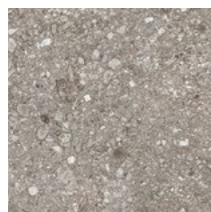
CD

Dark ceramic
Ceramica dark



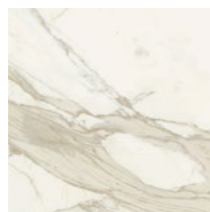
CG

Grey ceramic
Ceramica grey



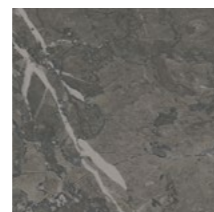
CZ

Ceppo di Grè ceramic
Ceramica Ceppo di Grè



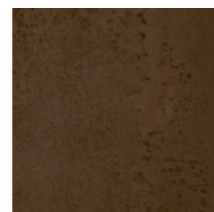
CC

Pre-polished Calacatta ceramic
Ceramica Calacatta Prelucidata



CX

Pre-polished Stone Grey ceramic
Ceramica Stone Grey Prelucidata



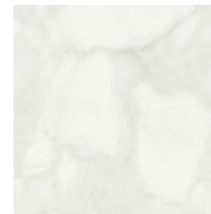
KC

Corten ceramic
Ceramica Corten

Ceramic

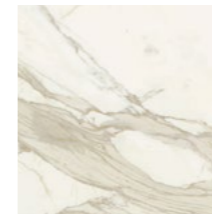
Ceramica

Categoria CE1



CA

Arabescato light ceramic
Ceramica Arabescato light



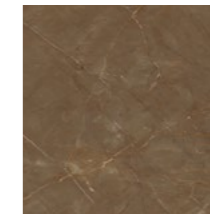
CL

Polished Calacatta ceramic
Ceramica Calacatta lucida



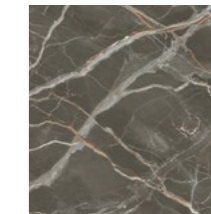
CY

Stone grey ceramic
Ceramica Stone grey



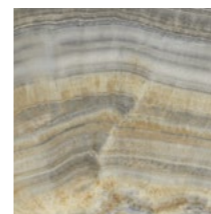
CU

Gaudi Stone ceramic
Ceramica Gaudi Stone



CV

Ombra di Caravaggio ceramic
Ceramica Ombra di Caravaggio



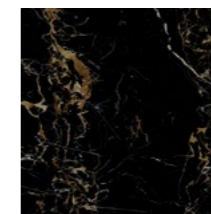
CH

Grey onyx ceramic
Ceramica Onice grigio



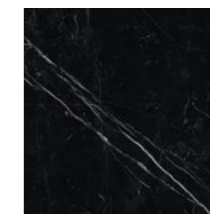
CI

Gold Onyx ceramic
Ceramica Onice oro



CO

Portoro ceramic
Ceramica Portoro



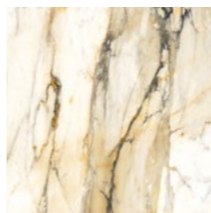
CQ

Polished Marquinia ceramic
Ceramica Marquinia lucida



CF

Eramosa ceramic
Ceramica Eramosa



CW

Antique ceramic
Ceramica Antique

base

Metal

Metallo



GN

Embossed black
Nero gofrato



GB

Embossed white
Caffè gofrato



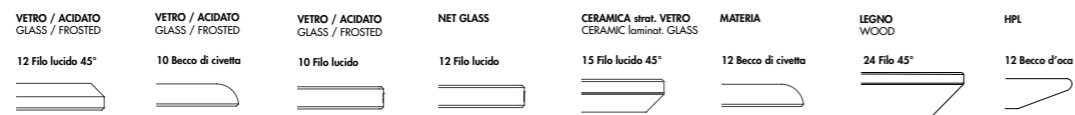
GC

Embossed Mocha
Caffè gofrato



GT

Embossed clay
Caffè gofrato



Bordi/Edges

		VETRO / ACIDATO GLASS / FROSTED	VETRO / ACIDATO GLASS / FROSTED	VETRO / ACIDATO GLASS / FROSTED	NET GLASS	CERAMICA strat. VETRO CERAMIC laminat. GLASS	MATERIA	LEGNO WOOD	HPL
round									
14	●	Ø 62x75h	•	•	•	•	•	•	•
	●	Ø 80x75h	•	•	•	•	•	•	•
	●	Ø 100x75h	•	•	•	•	•	•	•
	●	Ø 120x75h	•	•	•	•	•	•	•
	●	Ø 130x75h	•	•	•	•	•	•	•
	●	Ø 140x75h	•	•	•	•	•	•	•
	●	Ø 150x75h	•	•	•	•	•	•	•
	●	Ø 170x75h	•	•	•	•	•	•	•
bar									
●	Ø 62x75h	•	•	•	•	•	•	•	•
●	Ø 80x75h	•	•	•	•	•	•	•	•
●	Ø 62x110h	•	•	•	•	•	•	•	•
■	70x70x75h	•	•	•	•	•	•	•	•
■	70x70x110h	•	•	•	•	•	•	•	•
shaped									
●	62x62x75h	•	•	•	•	•	•	•	•
●	80x80x75h	•	•	•	•	•	•	•	•
●	100x100x75h	•	•	•	•	•	•	•	•
●	120x120x75h	•	•	•	•	•	•	•	•
●	130x130x75h	•	•	•	•	•	•	•	•
●	140x140x75h	•	•	•	•	•	•	•	•
●	150x150x75h	•	•	•	•	•	•	•	•
elliptical									
●	180x130x75h	•	•	•	•	•	•	•	•
●	200x110x75h	•	•	•	•	•	•	•	•
●	220x130x75h	•	•	•	•	•	•	•	•
shaped two bases									
●	220x115x75h	•	•	•	•	•	•	•	•
●	250x120x75h	•	•	•	•	•	•	•	•
●	300x135x75h	•	•	•	•	•	•	•	•

Materiali e manutenzione

ITA

Vetro

Le laccature utilizzate non presentano problemi di durata: basta evitare graffi e urti contro oggetti particolarmente duri e spigolosi. Il vetro è colorato solo sulla faccia posteriore sia nei vetri laccati coprenti mono e bicolore che nei vetri acidati laccati. La tonalità dei campioni proposti è indicativa e non va pertanto intesa in senso restrittivo; può infatti differire leggermente in conformità ai margini di tolleranza riconosciuti per i materiali impiegati. I materiali impiegati possono essere puliti tranquillamente solo con acqua oppure con un detergente neutro. Evitare l'uso di abrasivi, acidi o reagenti chimici. Il vetro è interpretato attraverso la sua trasparenza, pertanto la conformità al campione può differire a seconda della superficie e degli spessori impiegati. Un esempio lampante è dato dal vetro extrachiario che nei campioncini si presenta completamente neutro ma che nei piani di dimensioni maggiori e con spessori più consistenti assume sfumature azzurro/verdi. Per tale ragione vi preghiamo anche di segnalare con particolare attenzione articoli che debbano essere affiancati o facenti parte di una stessa commissione.

La finitura bicolore consiste nella doppia laccatura nella parte interna della lastra di vetro. La prima laccatura, visibile attraverso la trasparenza del vetro, è disponibile nelle categorie B-D. La seconda laccatura, visibile internamente, equivale al colore pastello opaco utilizzato per ottenere le finiture di cat. B. Vi facciamo presente che in questo caso l'effetto finale differisce da quello creato dalla medesima laccatura attraverso il vetro, in particolare nei colori tenui.

Specchi

Gli specchi oro e rosa potrebbero presentare delle piccole imperfezioni dovute alle caratteristiche tecniche del materiale. Non possono essere utilizzati in luoghi umidi. Pulire solo con panni asciutti.

Ceramica

I campioni riportati sono una parte delle lastre che vengono lavorate. La lastra completa si può vedere nella corrispondente cartella. Pulire utilizzando acqua e una piccola quantità di detergente neutro. Evitare l'utilizzo di detersivi contenenti cere e prodotti ceranti per evitare la formazione di strati untuosi.

Legno

I colori dei legni sono campioni indicativi. Pulire utilizzando un panno morbido inumidito.

Metalli

I colori dei metalli sono campioni indicativi. Pulire utilizzando un panno morbido inumidito.

Tessuti/Pelli/Ecopelli/Velluti

I colori dei tessuti sono campioni indicativi. Per la cura e la manutenzione fare riferimento alle indicazioni riportate nelle rispettive cartelle e alle schede tecniche fornite dai produttori.

Se permangono dubbi contattare l'azienda.

Colours and maintenance

ENG

Glass

The lacquering used for our furniture is extremely durable as long as you avoid scratching it or bumping particularly hard/sharp objects against it. The glass is lacquered only on the back side both for mono or two-tones lacquered and frosted lacquered glasses. The shade of the samples is only indicative and has not to be taken as restrictive. It can in fact slightly differ in conformity to the tolerances recognized for the materials used. All the materials we use can be easily cleaned with water only or with a mild detergent. Do not use abrasive materials, acids or harsh chemicals. The glass is interpreted through its transparency, therefore the conformity to the sample might differ according to the surface and the thickness used. For example, the extralight glass is completely neutral when seen in the small samples, but it takes a light blue/greenish shade when used on bigger or thicker tops. For this reason, we beg you to indicate carefully those articles which have to be placed side by side or which are part of the same commission.

The two-tones finish consists of a double lacquering on the internal part of the glass sheet. The first lacquering, which is visible through the transparency of the glass, is available in the finishes of cat. B-D. The second lacquering, which is visible internally, is the same of the mat pastel used to get the finishes of cat. B. Please notice that the final effect is different from the one created by the same lacquering through the glass, in particular when it comes to soft colours.

Mirrors

Gold and rose mirrors could have small imperfections due to the particular technical characteristics of the material. We recommend not to use them in damp areas. Clean only with a dry cloth.

Ceramic

The shown samples are part of the bigger slabs Sovet works with. The complete slab is visible in the corresponding folder. Clean using water and a small amount of neutral detergent. Avoid using detergents with wax and waxing products to avoid the formation of greasy layers.

Wood

Wood colours are indicative samples. Clean using a damp soft cloth.

Metals

Metals colours are indicative samples. Clean using a damp soft cloth.

Fabrics/Leathers/Fake leathers/velvets

Fabrics colours are indicative samples. For care and maintenance please refer to the instructions present in the corresponding folders and to the technical sheets provided by the manufacturers.

In case of further doubt please get in touch with the factory.