



## OFF CUT

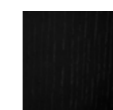
design Nathan Yong

Bookshelf made of solid wood splints of various sizes, thickness 20x20 mm assembled. Finishes: charcoal dyed oak or "canaletto" walnut with water-based acrylic paint finish. 6 shelves in transparent tempered glass 6 mm thick. The base/lower shelf is always in wood, same finish as the books helf, with insert of a stabilizer weight.

### Structure



Natural Oak

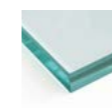


Charcoal-dyed  
Oak



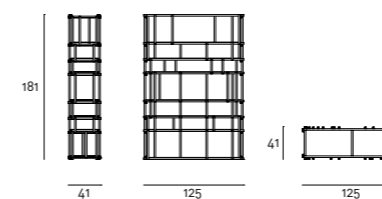
Canaletto  
Walnut

### Shelves



Transparent  
Glass

### Technical Drawings



### Notes

Off Cut has undergone and passed the tests of general safety requirements (EN 14749: 2005, par.6.1), resistance of the shelves' supports (EN 14749: 2005, par.6.3.3), and stability (EN 14749: 2005, par.6.6) with issue of relative certificate by CATAS®.

Wood is a living material; therefore, it can have slight color and dimension changes. The presence of any non-homogeneous color shades is not to be considered a defect but a quality.

For assembly, please refer to the instruction included with the product.

—  
Off Cut bookshelf with structure in  
canaletto walnut



—  
Off Cut bookshelf with structure in  
natural oak

