



HALFSQUARE

design Giacomo Moor

Bedside tables and cabinets consisting of a series of bases, tops and open compartments made of 3 mm thick steel sheet and steel profiles with 20x20 mm triangular section, with epoxy polyester powder coating in Gunmetal grey or burnished color; for the bases only, an MDF base panel lacquered in matt black RAL 9017 provided.

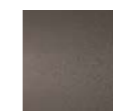
Single or double-height drawer in MDF veneered in Canaletto walnut or Striped Grey, with side panels in matt charcoal black finishing coupled with Blum® runners, bottom and back in MDF lacquered matt black RAL 9017. All elements are fixed to each other by means of bushes and screws.

Floor support provided by adjustable black plastic feet.

Structure



Gunmetal Grey
Lacquering



Burnished
Painting

Frontal and Lateral Parts



Striped Grey



Canaletto
Walnut

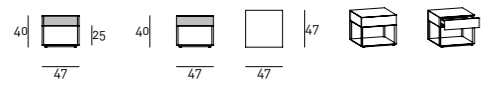
Notes

Wood is a living material; therefore, it can have slight color and dimension changes. The presence of any non-homogeneous color shades is not to be considered a defect but a quality.

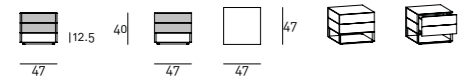
STRIPED GREY: it is a decorative multilaminar wood veneer, always finished with a transparent acrylic painting, which features exclusive patterns reproducing the natural characteristics of wood. We would like to remind you that, being a natural and living wooden material, it may present non-homogeneous colour shades, which are peculiarities of the material itself.

Technical Drawings
Bedside table

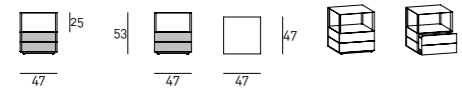
A



B

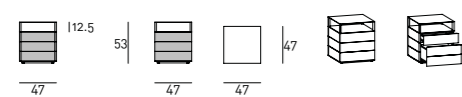


C

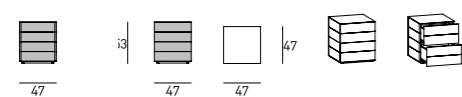


Cabinet

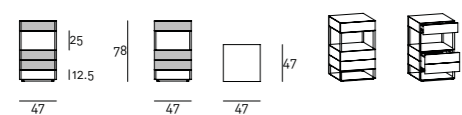
D



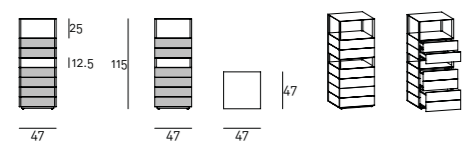
E



F



G



H

