



SEDIA | CHAIR

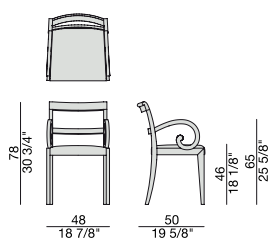
Poltroncina con struttura in massello di noce canaletta e rivestimento nei tessuti della collezione.

Armchair with frame in solid canaletta walnut and cover in the fabrics of the collection.

Armlehnstuhl mit Gestell aus massivem Nussbaum Canaletta und Bezug in den Stoffen der Kollektion.

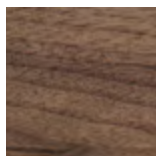
Petite fauteuil avec structure en noyer canaletta massif et revêtement dans les tissus de la collection.

Butaquita con estructura en nogal canaletta macizo y revestimiento en las telas de la colección.

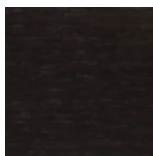


SEDIA | CHAIR

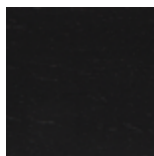
Essenze | Wood



Noce canaletta
Canaletta walnut



Noce canaletta
tinto moka
*Canaletta walnut
moka stained*

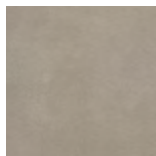


Noce canaletta
tinto wengè
*Canaletta walnut
wengè stained*

SEDIA | CHAIR

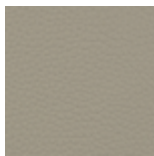
Pelle | Leather

Cat. LUX



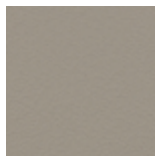
Nabuk

Cat. PLUS



Pelle PLUS

Cat. EXTRA



Pelle EXTRA

Cat. PELLE



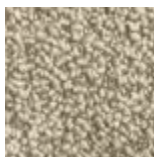
Pelle

Rivestimento | Cover

Cat. A



Twist

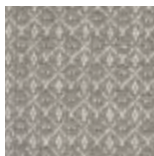


Zante

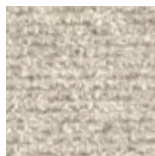
Cat. B



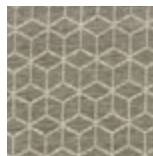
Bouclage



Motley



Tammy



Rabat

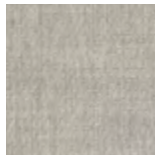
Cat. C



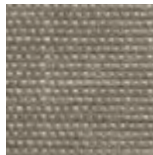
Armam



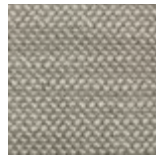
Ikat



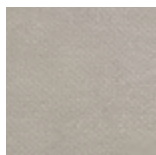
Lint



Loom



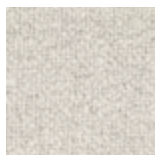
Madras



Moleskin



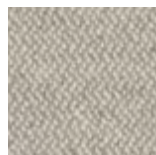
Moran



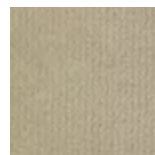
Patch



Silesia



Serge



Velvet

Cat. D



Paros
eco leather



Range

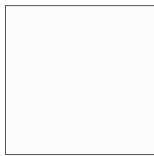


Tress

Cat. E



Dorian



In Bianco/Calico

Cat. COM

Disponibile con tessuto fornito dal cliente.
Available with fabric supplied by the customer.
Verfügbar mit Kundenstoff.
Disponibile avec tissu du client.
Disponibile con tela suministrada por el cliente.