

# Abalon

Ronan & Erwan Bouroullec, 2022

**vitra.**



Taking its name from the shell of a sea snail, Abalon forms its own architecture for seating circles: with its organically curved shape, the sofa evokes a circle to which people feel drawn. The expansive backrest has two functions: it shields sitters who are engaged in a private conversation and offers a sense of protection to those seeking retreat within an open environment.

Abalon is unusual in appearance: solid yet light, massive yet graceful. It functions as a striking solo piece and when several sofas are used together, the concave and convex surfaces create a state of compelling tension, neither attracting nor repelling one another. The upholstered seat shell of the Abalon Sofa generously accommodates three people, while the curved shape creates a common focal point. The front and back of the seat shells are covered separately with different knitted fabrics, which can be chosen in various combinations. Together with the two available colours of the boldly defined base, this opens up a wide range of configuration options. The fabric covers of the sofa can be removed in full for cleaning or replacement, which further enhances its durability.

The Abalon Sofa can be complemented with Abalon Platform and Abalon Table. Abalon Platform is a round stool that can be used as a flexible seat as well as a footrest. The carefully proportioned, widely splayed legs of the base not only ensure a high degree of stability, but also clearly identify the stool as a member of the Abalon family. The Abalon Table is a circular coffee table, whose tops come in a choice of finishes.

## Materials

### Abalon Sofa

- **Body:** metal frame with moulded polyurethane foam and polyester fleece.
- **Seat height:** 400 mm (340 mm with applied load, measured in accordance with EN 1335-1).
- **Covers:** knit fabric, removable. Front and back covers are separate and in different colours.
- **Legs:** die-cast aluminium, powder-coated.
- **Beam:** rectangular tubular steel, powder-coated.
- **Glides:** non-slip plastic glides, suitable for soft and hard floors.

### Abalon Platform

- **Seat surface:** plywood panel with moulded polyurethane foam and polyester fleece.
- **Seat height:** 400 mm (340 mm with applied load, measured in accordance with EN 1335-1).
- **Cover:** knit fabric, removable.
- **Base:** non-swivel four-star base in die-cast aluminium, powder-coated finish, pedestal in steel, powder-coated finish.
- **Glides:** plastic glides for soft floors or felt glides for hard floors.

### Abalon Table

- **Table top:** base material MDF (medium-density fibreboard) in real oak veneer or textured powder-coated finish; table thickness 25 mm with 15° bevelled edge.
- **Base:** non-swivel four-star base in die-cast aluminium, powder-coated finish, pedestal in steel, powder-coated finish.
- **Glides:** plastic glides for soft floors or felt glides for hard floors.



**06**  
light grey/cream  
(121)

**Cover**



**01**  
silver grey (111)



**17**  
light oak

**Table top in veneer**



**91**  
mint powder-coated (smooth)

**Base**



**02**  
dark green/  
ochre (951)

**Cover**



**02**  
dark green (971)



**04**  
dark oak, with  
protective  
varnish

**Table top in veneer**



**12**  
deep black  
powder-coated  
(smooth)

**Base**



**01**  
dark green/  
green (961)

**Cover**



**03**  
black (1191)



**04**  
dark oak, with  
protective  
varnish

**Table top in veneer**

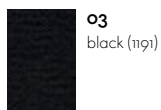


**12**  
deep black  
powder-coated  
(smooth)

**Base**



**o8**  
mauve/beige  
(221)



**o3**  
black (1191)

**Cover**



**17**  
light oak

**Table top in veneer**



**12**  
deep black  
powder-coated  
(smooth)

**Base**



**o4**  
dark red/red  
(691)



**o1**  
silver grey (11)

**Cover**



**o4**  
dark oak, with  
protective  
varnish

**Table top in veneer**



**91**  
mint powder-  
coated (smooth)

**Base**



**o3**  
dark green/grey  
(971)



**o2**  
dark green (971)

**Cover**



**o4**  
dark oak, with  
protective  
varnish

**Table top in veneer**

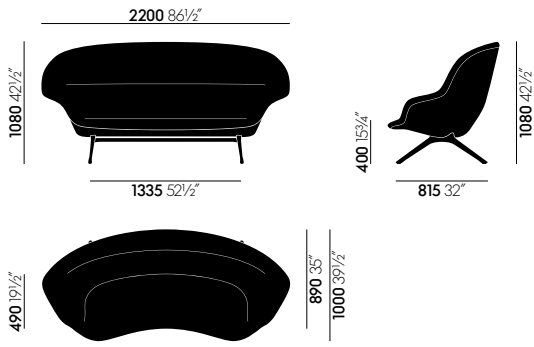


**12**  
deep black  
powder-coated  
(smooth)

**Base**

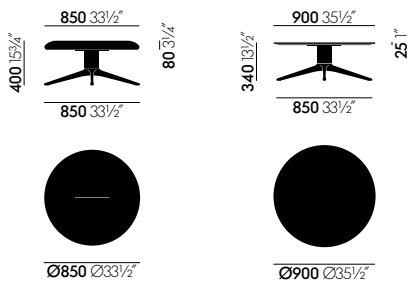


**DIMENSIONS** (in accordance with EN 1335-1:2000)



Abalon Sofa

---



Abalon Platform

Abalon Table

---

**COLOURS AND MATERIALS**



**52**  
soft light  
powder-coated  
(textured)



**17**  
light oak



**91**  
mint powder-  
coated (smooth)



**30**  
basic dark  
powder-coated  
(textured)



**04**  
dark oak, with  
protective  
varnish



**12**  
deep black  
powder-coated  
(smooth)

**Table top MDF**

---

**Table top in veneer**

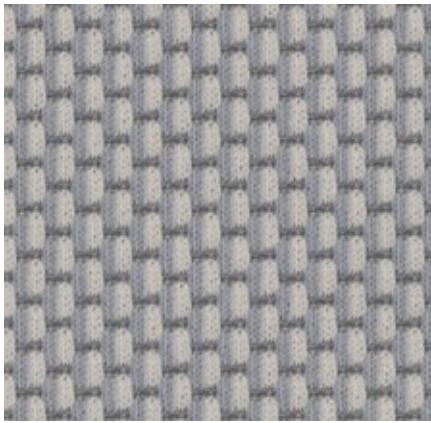
---

**Base**

---

# Drop Home/Office

**vitra.**



Drop is a knitted upholstery fabric with a lively three-dimensional look. Designed with colour compositions of up to three different hues, Drop exhibits a pattern reminiscent of a string of coloured pearls in a interplay of light and shadow. The robust knit fabric is suited for home settings, as well as public spaces.

Drop is available in 10 colours.

Material	20% nylon, 60% new wool, 20% polyester
Weight	520 g/m <sup>2</sup> (15.3 oz/y <sup>2</sup> )
Width	157 cm +/- 2 cm (61'')
Abrasion resistance	80,000 Martindale
Fastness to light	Type 6
Pilling	Grade 4-5
Fastness to rubbing	Grade 4-5 dry and wet



# Planum Home



Planum is a hard-wearing, knitted upholstery fabric with a light matt sheen, which gives it a soft appearance. Its fine smooth surface has a dry feel. The knit fabric is suited for private settings as well as public spaces, and can be optimally combined with the multiple shades of the textile Drop.

Planum is available in 3 colours.

Material	14% nylon, 44% new wool, 42% polyester
Weight	400 g/m <sup>2</sup> (11.8 oz/y <sup>2</sup> )
Width	162 cm +/- 2 cm (63'')
Abrasion resistance	100,000 Martindale
Fastness to light	Type 5-6
Pilling	Grade 4
Fastness to rubbing	Grade 4-5 dry and wet

