

# Cité

Jean Prouvé, 1930

**vitra.**



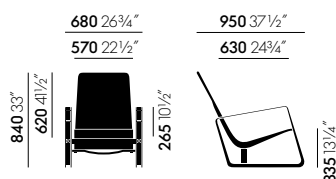
Designed for a competition to furnish the student residence halls at the Cité Universitaire in Nancy, the Cité armchair is one of Jean Prouvé's early masterpieces. Prouvé himself used this dynamic looking armchair – with distinctive runners made of powder-coated sheet steel and broad leather belts for armrests – in the

living room of his own home. Generous dimensions and inviting upholstery contribute to the great comfort of Cité.

## Materials

- **Cover:** seat and backrest with a continuous cover in fabric or leather.
- **Upholstery:** neck cushion in polyurethane foam, height-adjustable.
- **Seat height:** 335 mm (210 mm with applied load, measured in accordance with EN 1335-1).
- **Base:** bent sheet steel, powder-coated finish (smooth).
- **Glides:** fitted with plastic glides for carpet; felt glides for hard floors optionally available.

## DIMENSIONS (in accordance with EN 1335-1:2000)



Cité

**88**  
Prouvé Blanc  
Colombe (Ecrú)  
powder-coated  
(smooth)

**06**  
Japanese red  
powder-coated  
(smooth)

**12**  
deep black  
powder-coated  
(smooth)

**Base frame  
Colour group 1**

---

**13**  
Prouvé Gris  
Vermeer powder-  
coated (smooth)

**18**  
Prouvé Blé Vert  
powder-coated  
(smooth)

**41**  
Prouvé Bleu  
Marcoule powder-  
coated (smooth)

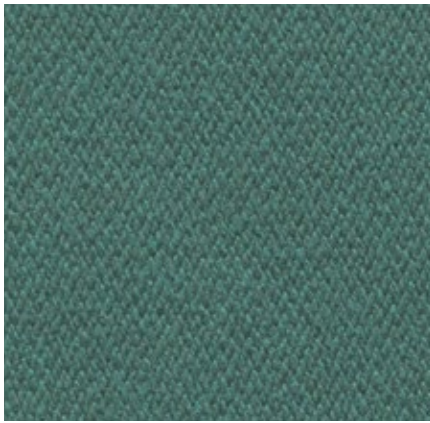
**14**  
Prouvé Bleu  
Dynastie powder-  
coated (smooth)

**Base frame  
Colour group 2**

---

# Mello Home, F40

**vitra.**



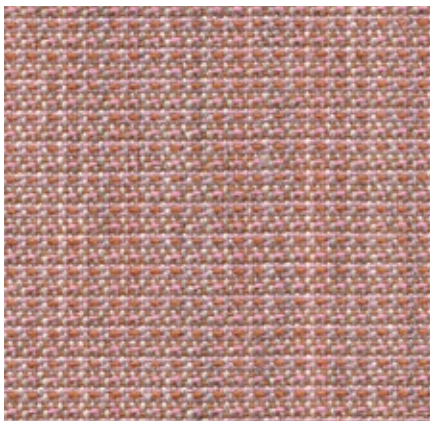
Mello is an elegant cotton fabric with a pleasant softness and cool tactile qualities. Thanks to a thicker melange yarn of recycled cotton, the robust twill weave has a lively yet balanced appearance. The understated colour palette for Mello ranges from pastel tones to natural, earthy shades and darker hues.

Mello is available in 8 colours.

Material	80% cotton, 20% polyester
Weight	530 g/m <sup>2</sup> (15.6 oz/y <sup>2</sup> )
Width	142 cm +/- 2 cm (56")
Abrasion resistance	30,000 Martindale
Fastness to light	Type 5
Pilling	Grade 4
Fastness to rubbing	Grade 3-4 dry and wet



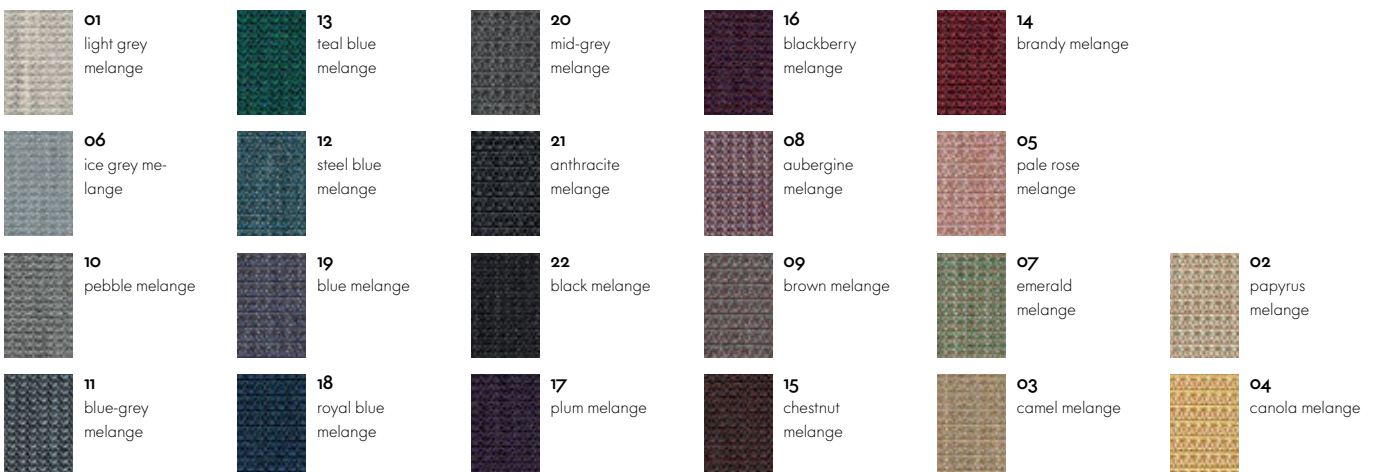
# Tress Home/Office, F80



Tress is a flat woven fabric with a lively appearance that derives from the contrast between its even structure and the natural melange of colours. The combination of yarns with varied hues creates a harmonious and yet vibrant look. Thanks to its high wool content, Tress is a durable, easy-care material with a home-like aesthetic.

Tress is available in 22 colours.

Material	8% polyamide, 73% new wool, 19% polyester
Weight	310 g/m <sup>2</sup> (9.1 oz/y <sup>2</sup> )
Width	142 cm +/- 2 cm (56")
Abrasion resistance	40,000 Martindale
Fastness to light	Type 6
Pilling	Grade 4-5
Fastness to rubbing	Grade 4-5 dry and wet



# Leather Premium F Home/Office, L50

**vitra.**



Leather Premium F is a relatively smooth cowhide leather with a flat grain and fine top sheen. It is dyed-through, lightly pigmented and processed with a tanning agent extracted from olive tree leaves (a waste product of the olive harvest).

Leather Premium F is available in 22 colours.

Material

Semi-aniline nappa leather with a very soft and supple feel, vegetable tanned

Fastness to light

Type 5

Thickness

1.1–1.3 mm

Fastness to rubbing

Grade 4 dry and wet

