



CAFÈ STOOL | INDOOR - OUTDOOR

design Piero Lissoni

Stools available in two seating heights for indoor and outdoor use.

Indoor version: frame in steel tube with epoxy polyester powder coating in Gunmetal grey or burnished color.

Seat panel in poplar plywood and polyurethane foam padding covered with 100% polyether coupled with a thermo-fixed polyamide velveteen backing. Weaving with hide profile or synthetic rope in the collection finishes. Fabric or leather upholstery, fully removable with zippers and Velcro fastenings, by unscrewing the seat from the frame.

Outdoor version: frame in AISI 316 stainless steel tube with matte satin finish, or with epoxy polyester powder coating in Gunmetal grey and burnished color. Seat frame in outdoor plywood and open cell polyurethane foam padding, with a draining fabric cover.

Woven with PVC profile or synthetic rope, in the colors in collection. Upholstery with outdoor fabrics, fully removable with zippers, upon unscrewing the seat from the frame.

All versions are fitted with a protective rubber profile on the front crossbar, designed to function as a footrest.

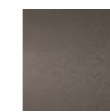
Floor support provided by plastic tips.

Seat depth: 42cm.

Structure



Gunmetal Grey
Lacquering
(In-Outdoor)

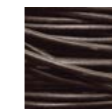


Burnished
Painting
(In-Outdoor)

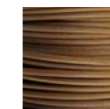


Stainless Steel
with Matt Satin
Finish
(Outdoor)

Weaving



Hide Rope
col. Brown
(Indoor)



Hide Rope
col. Natural
(Indoor)



Hide Rope
col. Black
(Indoor)



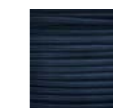
Synthetic
Rope Profile
col. Orange
(In-Outdoor)



Synthetic
Rope Profile
col. Argilla
(In-Outdoor)



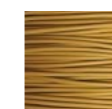
Synthetic
Rope Profile
col. Grey
(In-Outdoor)



Synthetic
Rope Profile
col. Midnight
(In-Outdoor)



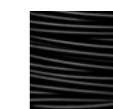
Synthetic
Rope Profile
col. Black
(In-Outdoor)



Matt Natural
Leather
PVC
(Outdoor)



Matt White
PVC
(Outdoor)

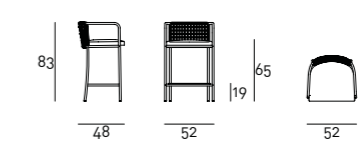
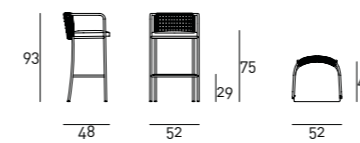


Matt Black
PVC
(Outdoor)



Matt Red
PVC
(Outdoor)

Technical Drawings



Notes

For the OUTDOOR version, we recommend placing the product on terraces or verandas to guarantee its durability over the years. It is recommended to use a "Protective Cover" to improve the longevity of the product. For further information about the dedicated maintenance, please refer to the technical sheet available in the "Materials" section on our website.

For information on the compatibility of the collection's coverings with each product, please refer to the [compliance sheet](#) provided in the "Materials" section of the website.

For leather coverings the "Leather A" or "Leather B" Maintenance Kit is included with the product.

