

FLAMINGO

Design G. Carollo

APPENDIABITI | CLOTHES STAND

2009



FLAMINGO

Design G. Carollo

APPENDIABITI | CLOTHES STAND

2009

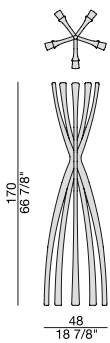
Portabiti in massello di noce
canaletta.

*Clothes-stand in solid canaletta
walnut.*

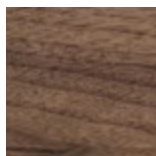
*Kleiderständer aus massivem
Nussbaum Canaletta.*

*Porte manteaux en noyer
canaletta massif.*

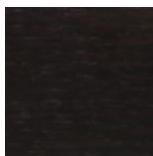
*Perchero en nogal canaletta
macizo.*



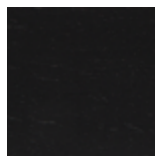
Essenze | Wood



Noce canaletta
Canaletta walnut

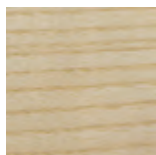


Noce canaletta
tinto moka
Canaletta walnut
moka stained



Noce canaletta
tinto wengè
Canaletta walnut
wengè stained

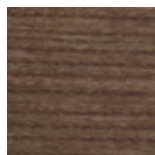
Essenze | Wood



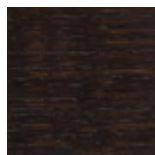
Frassino naturale
Natural ash



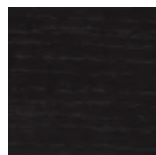
Frassino
tinto canapa
Ash canapa stained



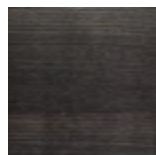
Frassino
tinto noce canaletta
Ash canaletta walnut
stained



Frassino
tinto moka
Ash moka stained

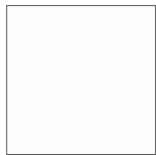


Frassino
tinto wengè
Ash wengè stained



Frassino
tinto grigio
Ash grey stained

Laccato opaco poro chiuso | Matt Lacquered closed pore



Bianco
White
(RAL 9016)



Avorio
Ivory
(RAL 1013)



Argilla
Argilla
(RAL 7006)



Cioccolato
Chocolate
(RAL 8019)



Nero
Black
(RAL 9005)

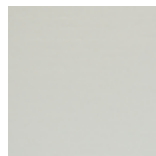


Iron
Iron
(RAL 7011)



Granata
Granata
(NCS S4050Y90R)

Laccato opaco poro aperto | Matt Lacquered open pore



Bianco
White
(RAL 9016)



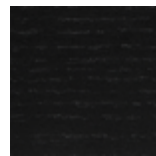
Avorio
Ivory
(RAL 1013)



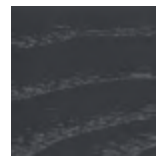
Argilla
Argilla
(RAL 7006)



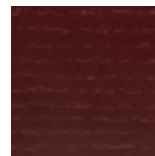
Cioccolato
Chocolate
(RAL 8019)



Nero
Black
(RAL 9005)



Iron
Iron
(RAL 7011)



Granata
Granata
(NCS S4050Y90R)