

SERAX

WOUTERS & HENDRIX

LES OBJETS MOULEVERSANTS





LES OBJETS MOULEVERSANTS — Since 1984, Antwerp jewellery designers Wouters & Hendrix have been bending the rules of traditional jewellery making and wearing. Each design, handmade in their Antwerp studio, is a dialogue between art and outstanding craft, between expectation and the unprecedented. The new Les Objets Mouleversants collection by Wouters & Hendrix for Serax brings this same avant-garde artistry to the home, reimagining everyday objects for your table as precious, surrealist treasures.

The name is a pun on the surrealist objets bouleversants (bewildering objects) and moules or mussels. Highlights include Marcel, a porcelain bowl in the shape of a mussel, after the famous Belgian artist Marcel Broodthaers. Edward, after Edward James, is a unique carafe with a sculpted hand fused into it. The elegant bottle stoppers Leonora and Meret with mother-of-pearl inlay look like tiny sculptures from the era of Magritte, Dali and Man Ray, much like the bowls in the shape of red lips.

With this collection for Serax, Wouters & Hendrix wanted to reinvent daily objects into treasures that elevate the pleasure of dining with your loved ones. Les Objets Mouleversants offers design lovers dreamy objects with an irreverent spirit, blurring the lines between practicality and art. All items are perfectly functional, however, and made of quality materials such as porcelain, mother-of-pearl and high-quality glass.

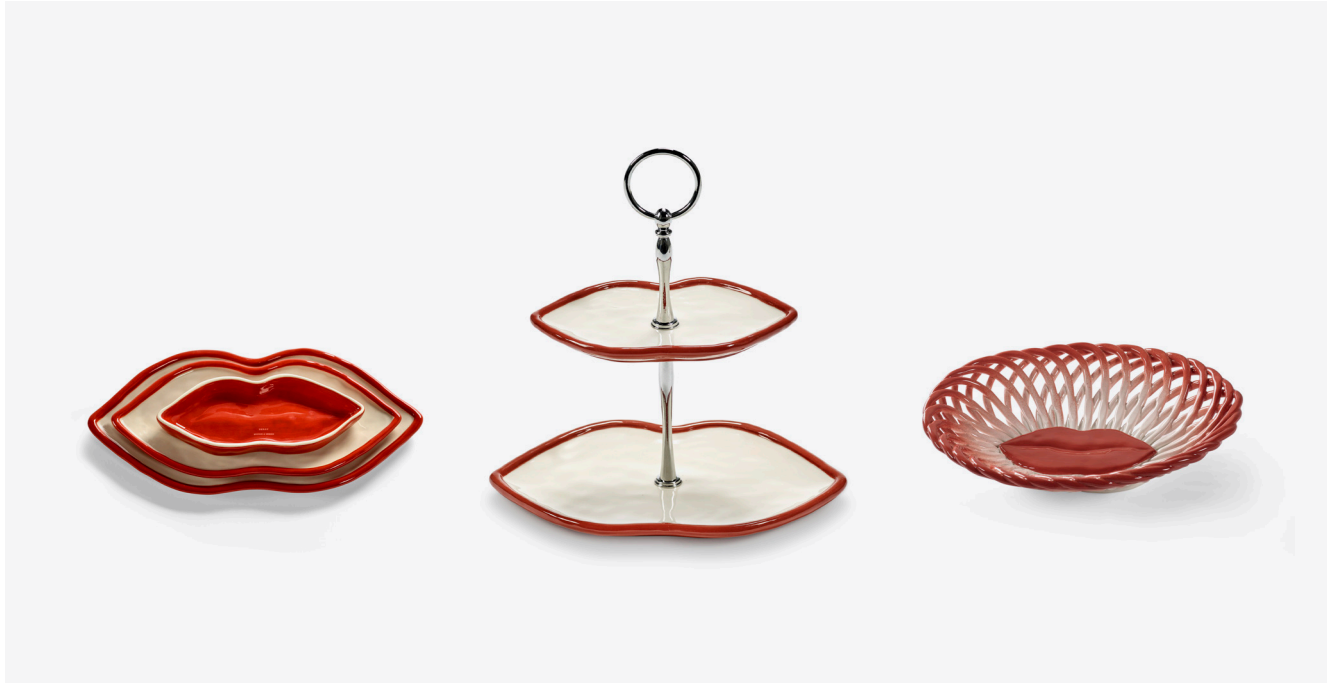
“The extension into home jewellery seemed like a natural step for us,” says creative director Katrin Wouters about this collaboration with Serax. Just as putting on your jewellery is the finishing flourish to your outfit, these objects add a hint of surprise and intrigue to everyday moments.” Les Objets Mouleversants brings that same avant-garde artistry to home jewellery.

WOUTERS & HENDRIX



TABLEWARE

PRODUCT	CUPS, SAUCERS, JUGS, BOWLS, TEAPOTS, SERVING PLATES	MAINTENANCE / CLEANING INSTRUCTION	WE ADVISE TO USE SOFT DETERGENTS FOR COMMERCIAL DISHWASHERS.
MATERIAL	PORCELAIN	USE	TABLEWARE
FINISH	FULLY GLAZED	FOODSAFE	YES
PRODUCTION	TRADITIONAL MOLDING	DISHWASHER SAFE	YES (EXCEPT FOR THE CAKESTAND)
PRINCIPAL COMPOSITION	IL (5.01%), SIO ₂ (68.22%), Al ₂ O ₃ (21.87%), FE ₂ O ₃ (0.19%), TIO ₂ (0.05%), CAO(0.13%), MGO(0.49%), K ₂ O (2.64%), NA ₂ O (1.12%)	MICROWAVE SAFE	YES
		OVEN SAFE	YES
		SALAMANDER SAFE	NO
COLOUR(S)	WHITE LIGHT BLUE BLUE - WHITE	PACKAGING	GIFTBOX VOLUME & DIMENSIONS OF THE COMPLETE RANGE AVAILABLE UPON REQUEST.



STONEWARE SERVEWARE

PRODUCT	DISHES, BASKETS, CAKESTANDS	MAINTENANCE / CLEANING INSTRUCTION	WE ADVISE TO USE SOFT DETERGENTS FOR COMMERCIAL DISHWASHERS.
MATERIAL	STONEWARE	USE	SERVEWARE
FINISH	FULLY GLAZED	FOODSAFE	YES
PRODUCTION	TRADITIONAL MOLDING & HANDPAINTING	DISHWASHER SAFE	NO
PRINCIPAL COMPOSITION	KAOLINE (47%), ALUMINIUM (27%), FELDSPAR (16%), QUARTZ (5%), MAGNESIUM (1%), MINERAL MATERIAL (4%)	MICROWAVE SAFE	YES (EXCEPT FOR THE BASKETS)
COLOUR(S)	WHITE RED WHITE - RED	OVEN SAFE	NO
		SALAMANDER SAFE	NO
		PACKAGING	GIFTBOX VOLUME & DIMENSIONS OF THE COMPLETE RANGE AVAILABLE UPON REQUEST.

Wouters & Hendrix

LES OBJETS MOULEVERSANTS



MARCEL SERVEWARE

PRODUCT	BOWLS	USE	SERVEWARE
MATERIAL	FINE BONE CHINA & BRASS	FOODSAFE	YES
FINISH	FULLY GLAZED	DISHWASHER SAFE	YES (EXCEPT FOR THE BRASS BOWL)
PRODUCTION	TRADITIONAL MOLDING	MICROWAVE SAFE	YES (EXCEPT FOR THE BRASS BOWL)
COLOUR(S)	WHITE BLACK BRASS	OVEN SAFE	NO
		SALAMANDER SAFE	NO
MAINTENANCE / CLEANING INSTRUCTION	FINE BONE CHINA: WE ADVISE TO USE SOFT DETERGENTS FOR COMMERCIAL DISHWASHERS. BRASS: GENTLY POLISH THE SURFACE WITH A SOFT MICROFIBER CLOTH & SUITABLE BRASS POLISH.	PACKAGING	GIFTBOX VOLUME & DIMENSIONS OF THE COMPLETE RANGE AVAILABLE UPON REQUEST.

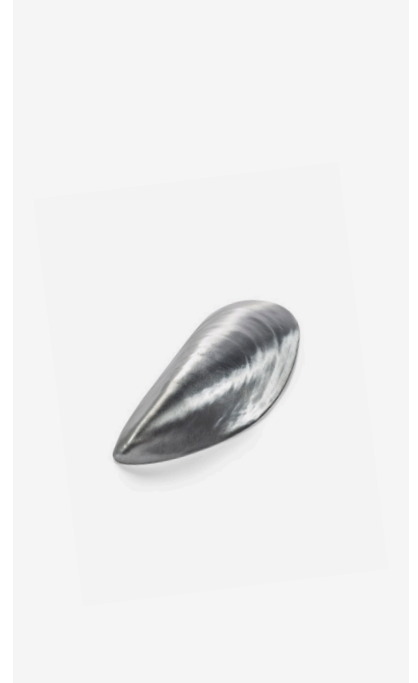


TABLE ACCESSORIES

PRODUCT	CANDLE HOLDERS, NAPKIN RINGS, BOTTLE OPENER	MAINTENANCE / CLEANING INSTRUCTION	CLEAN WITH A DAMP CLOTH & DRY WITH A DRY CLOTH.
MATERIAL	STONEWARE & STEEL	USE	DECORATION
FINISH	FULLY GLAZED	DISHWASHER SAFE	NO
PRODUCTION	TRADITIONAL MOLDING	PACKAGING	GIFTBOX
PRINCIPAL COMPOSITION	STONEWARE: KAOLINE (47%), ALUMINIUM (27%), FELDSPAR (16%), QUARTZ (5%), MAGNESIUM (1%), MINERAL MATERIAL (4%)		VOLUME & DIMENSIONS OF THE COMPLETE RANGE AVAILABLE UPON REQUEST.
COLOUR(S)	GREEN RED - WHITE BLACK - WHITE STEEL GREY		

GLASSWARE



PRODUCT	CARAFES
MATERIAL	NORMAL GLASS
PRODUCTION	MOUTH-BLOWN & MOULD
COLOUR	TRANSPARENT, EMERALD GREEN
MAINTENANCE / CLEANING INSTRUCTION	WE ADVISE TO USE SOFT DETERGENTS FOR COMMERCIAL DISHWASHERS.
USE	TABLEWARE
FOODSAFE	YES
DISHWASHER SAFE	YES
OVEN SAFE	NO
SALAMANDER SAFE	NO
CONTENT	95 CL
PACKAGING	GIFTBOX. VOLUME & DIMENSIONS OF THE COMPLETE RANGE AVAILABLE UPON REQUEST.

