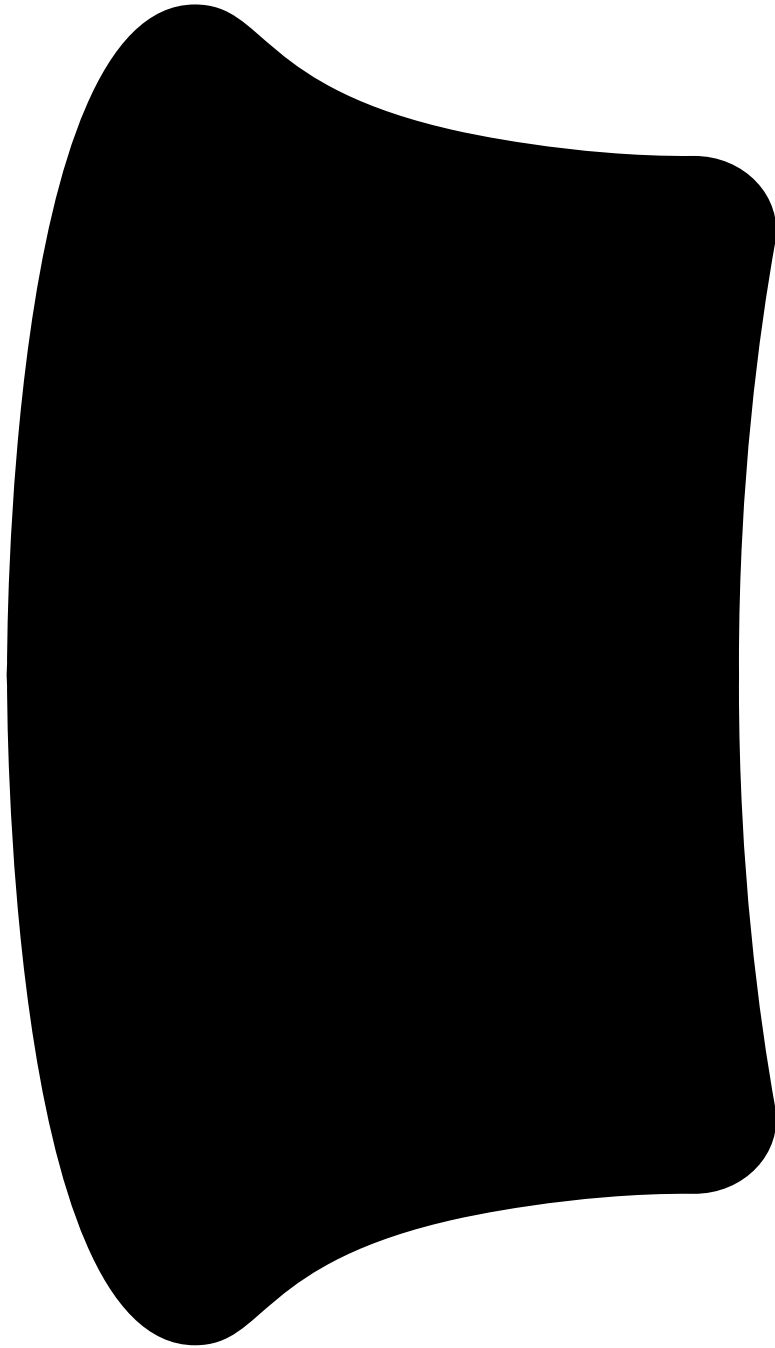


Touchwood



Fact Sheet

Touchwood Chair

Design by Lars Beller Fjetland

Subtle, strong, and elemental, the Touchwood Chair reflects designer Lars Beller Fjetland's belief that interacting with natural materials is of huge importance. Neither unnecessary decorations nor extraneous components should interrupt the simple relationship between material and user. The beechwood is molded into a continuous shape, making it contract grade durable, while preserving its flexibility. All variants of the Touchwood family stack, making them an ideal choice for public spaces or busy homes. If you perceive more than a little influence from classic minimalistic Scandinavian design at play in this hardworking, functional chair, you'd be right! An armchair, counter stool, bar stool and bar chair in a variety of wooden and metal bases, heights and finishes complete the Touchwood Family.



Product name	Finish	SKU	Gross wt	Net wt (kg/lbs)	Packaging dimensions
Touchwood Chair	Black / Black PC	20119			
	Black Graphite / Black PC	20120			
	Black Cobalt / Black PC	20121			
	Beech / Black PC	20122			
	Beech Calla / Black PC	20123			
	Beech Canyon / Black PC	20124			
	Black / Chrome	20125			
	Black Graphite / Chrome	20126			
	Black Cobalt / Chrome	20127			
	Beech / Chrome	20128			
	Beech Calla / Chrome	20129			
	Beech Canyon / Chrome	20130			

Upholstery

Sera
by Rohi (Germany)
94% Virgin Wool, 6% Polyamide
>122,000 Martindale
Pilling 4-5
Lightfastness 5-8
Flame resistance EN 1021: Part 1 & 2, BS 5852: Part 1 & 2 (Crib 5), US Cal. TB 117

Seat material

Beech
Fagus Sylvatica
Stained and Lacquered

Wood is a natural material. The color might vary from piece to piece

Leg material

Steel
Chrome (III) Plated
Powder Coated

Inside material

PU foam

Country of origin

Latvia

Always in stock

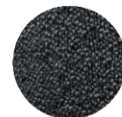
We keep all our products in stock and ready to ship from our warehouses in the US and EU



Canyon
Sera (Hem exclusive)



Cobalt
Sera (Hem exclusive)



Graphite
Sera (Graphit)



Calla
Sera (Calla)



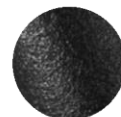
Natural
Beech



Black
Beech



Chrome
Chrome (III) Plated Steel



Black (RAL 9005)
Powder Coated Steel

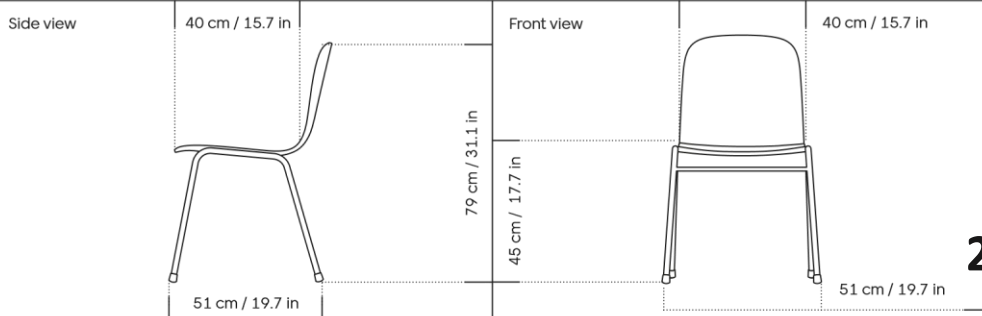
Samples

We supply samples of all our material finishes, order them directly from hem.com/samples

COM

We offer custom upholsteries and/or stains of this product for larger orders. Reach out to info@hem.com for assistance

Touchwood Chair



Strength, durability and safety – Requirements for non-domestic seating

ANSI/BIFMA X5.4-2012 American National Standard for Office Furnishings – Lounge and Public Seating

3D model

3D files of all products are available on the product pages on hem.com

Stackability

Touchwood Chair
1 – 15



197 cm / 77.7 in

The Touchwood chairs and armchairs are compatible with straight stacking chair trolleys that have a stacking plate/arm no wider than 40cm / 15 3/4". The stacking plate/arm should provide support under the chair's stacking bars, plus vertical support for the chairs to rest on when the stack is tilted back onto the trolley wheels during transport.

Hem

Tests & certifications

EN 16139:2013 – L2: Extreme use – Furniture –
Strength, durability and safety – Requirements
