

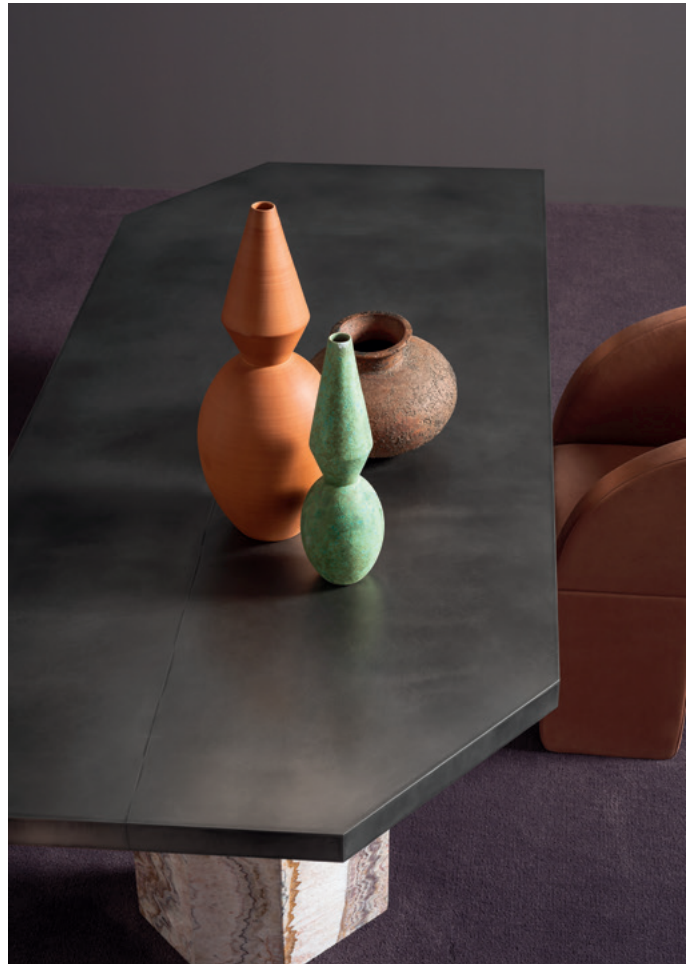
# JUPITER

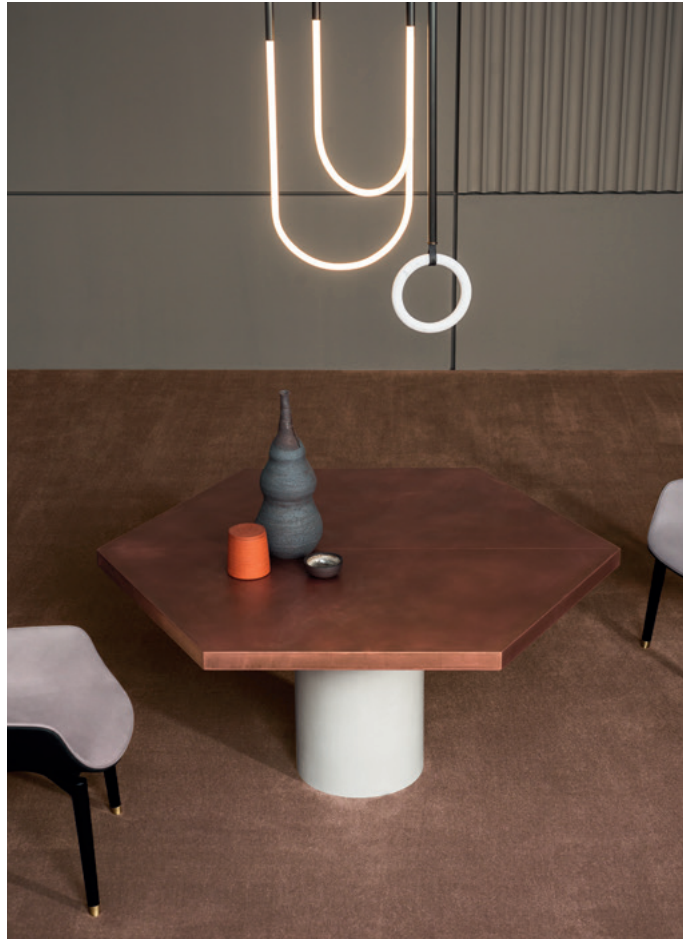
STUDIOPEPE











**Modello:** modello che necessita di montaggio.

**Piano:** piano tamburato rivestito con materiale a scelta e finito con vernice opaca o in marmo Travertino White opaco stuccato con resina trasparente e finitura spazzolata, con olio protettivo idrorepellente.

**Piedi:** gamba cilindrica in curvato di multistrato rifinito con cemento Terra Cruda (finitura impermeabile minerale, semi deformabile cementizia monocomponente) spatolato a mano da maestri artigiani e gamba sagomata con forma irregolare in multistrato con rivestimento in pietra con olio protettivo idrorepellente. Solo per la versione Special Edition Travertino: gamba cilindrica in massello di marmo Travertino a poro aperto e finitura spazzolata, con olio protettivo idrorepellente, e gamba sagomata con forma irregolare in multistrato con rivestimento in lastre di marmo Travertino White con resina trasparente e finitura spazzolata, con olio protettivo idrorepellente.

**Decoro:** piastra di collegamento delle gambe in metallo nero opaco.

Eventuali imperfezioni presenti, che sono da attribuirsi alla naturalezza delle pietre, possono essere resinate e non sono da considerarsi difetti. Blocchi e lastre variano visibilmente in quanto pietre naturali; tutte le immagini sono puramente indicative.

Cassa in legno dotata di due sensori per verifica di eventuali danni durante il trasporto.  
(Fare riferimento a "Avvertenze importanti").

---

**Model:** article with assembly required.

**Top:** honeycomb-core top covered with material by choice with matte varnish or in matte Travertino White marble top filled with transparent resin and burnished finish, with water-repellent protective oil.

**Feet:** curved poplar cylindrical-shaped leg finished with Terra Cruda concrete (mineral waterproof finishing, semi-deformable mono-component cementitious material) hand-paddled by master craftsmen and plywood contoured leg with irregular shape with stone covering with water-repellent protective oil. For Special Edition Travertino version only: cylindrical-shaped leg in solid Travertino White marble with open pore and burnished finish, with water-repellent protective oil, and plywood contoured leg with irregular shape with slabs covering in Travertino White marble with transparent resin and brushed finish, with water-repellent protective oil.

**Decoration:** leg connection plate in matte black metal.

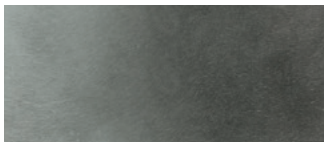
Any blemishes, that are attributable to the naturalness of stones, can be resin-filled and are not to be considered as defects. Blocks and slabs visibly vary as these are natural stones; all pictures are just a rough guide.

Wooden crate equipped with two sensors to check for any damage during transport.  
(Refer to "Important information").



## FINITURE DISPONIBILI/AVAILABLE FINISHES

### PIANO/TOP



alpaca anticato  
antiqued alpaca



ottone anticato  
antiqued brass



rame anticato  
antiqued copper

### SPECIAL EDITION TRAVERTINO



marmo Travertino White stuccato con  
resina trasparente e finitura spazzolata  
Travertino White marble filled with  
transparent resin and brushed finish

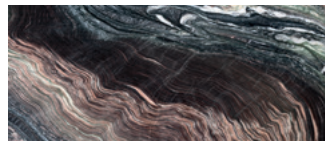
### PIEDI/FEET



marmo Bianco Gioia lucido  
glossy Bianco Gioia marble



marmo Calacatta Oro lucido  
glossy Calacatta Oro marble



marmo Cipollino Abyssal lucido  
glossy Cipollino Abyssal marble



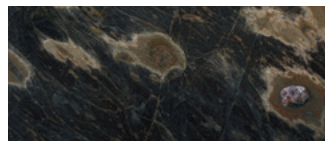
marmo Ocean Storm lucido  
glossy Ocean Storm marble  
(misura max./max size 280x130)



marmo Polar White opaco  
matte Polar White marble



marmo Travertino White stuccato con  
resina trasparente e finitura spazzolata  
Travertino White marble filled with  
transparent resin and brushed finish



granito Geode lucido  
glossy Geode granite



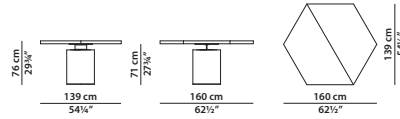
granito Patagonia lucido  
glossy Patagonia granite



onice Brioche Hidro  
Hidro Brioche onyx

160 x 139 h76 cm - 62½ x 54¼ h29¾"

Tavolo. Table.

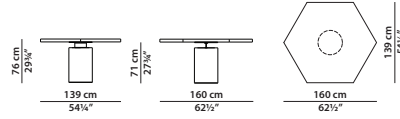


SPECIAL EDITION TRAVERTINO

160 x 139 h76 cm - 62½ x 54¼ h29¾"

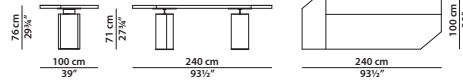
Tavolo. Sottopiano di rinforzo in alveolare di alluminio.

Table. Reinforcing aluminium honeycomb support.



240 x 100 h76 cm - 93½ x 39 h29¾"

Tavolo. Table.

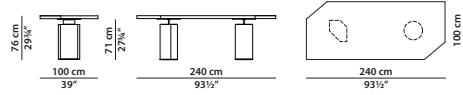


SPECIAL EDITION TRAVERTINO

240 x 100 h76 cm - 93½ x 39 h29¾"

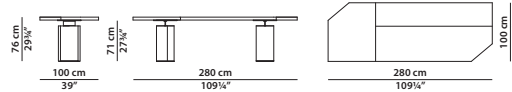
Tavolo. Sottopiano di rinforzo in alveolare di alluminio.

Table. Reinforcing aluminium honeycomb support.



280 x 100 h76 cm - 109¼ x 39 h29¾"

Tavolo. Table.



SPECIAL EDITION TRAVERTINO

280 x 100 h76 cm - 109¼ x 39 h29¾"

Tavolo. Sottopiano di rinforzo in alveolare di alluminio.

Table. Reinforcing aluminium honeycomb support.

