

MATERIAL

TIMBER



OAK
PURE OAK
(Code: E)

OAK
SMOKED OAK
(Code: G)

OAK
GRAIN MATTE
BLACK
(Code: M)

LEATHER

Shade
by
Sorensen
Leather



X808
(PITCH BLACK
20296)

X809
(SLADE 20299)

X811
(LIGHT CONCRETE
20294)

LEATHER

Leabelle



X353
(BITTER BROWN)

X340
(CHOCOLAT
BROWN)

X344
(AU LAIT)

X448
(GREIGE)

X343
(WHITE)

PAPER CORD

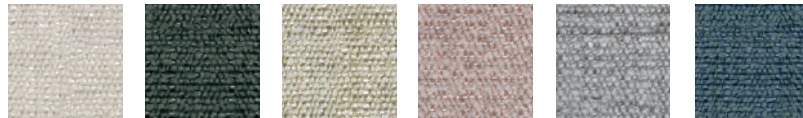


B932
(NATURAL)

B933
(BLACK)

FABRIC by Kvadrat

MAPLE
81%VI, 15%LI,
4%PE



B917
(KVA MAP 102)

B918
(KVA MAP 192)

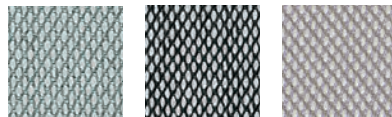
B909
(KVA MAP 222)

B956
(KVA MAP 332)

B910
(KVA MAP 722)

B920
(KVA MAP 792)

STEELCUT
TRIO 3
90%WO, 10%NY

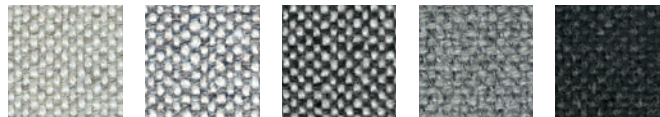


B784
(KVA STE 113)

B785
(KVA STE 124)

B786
(KVA STE 205)

HALLINGDAL
65
70%WO, 30%VI



B922
(KVA HAL 110)

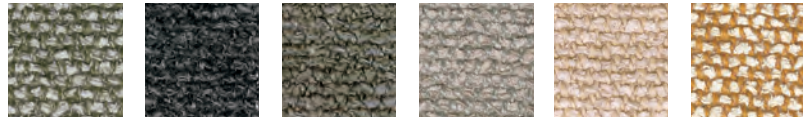
B923
(KVA HAL 116)

B924
(KVA HAL 126)

B925
(KVA HAL 130)

B926
(KVA HAL 180)

MOSS
52% CO, 22% VI,
14% PA, 6%LI
3% PE, 3% NY
* Do not wash
* Do not dry clean



B957
(KVA MOS 002)

B958
(KVA MOS 008)

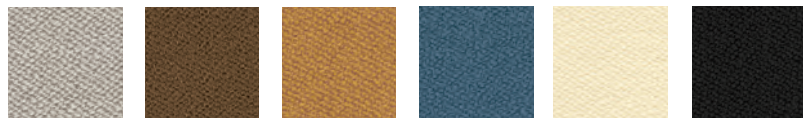
B959
(KVA MOS 014)

B960
(KVA MOS 016)

B961
(KVA MOS 019)

B962
(KVA MOS 021)

VIDAR 4
94%WO, 6%NY



B779
(KVA VID 222)

B927
(KVA VID 353)

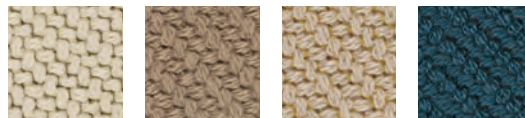
B928
(KVA VID 472)

B963
(KVA VID 0733)

B964
(KVA VID 1511)

B965
(KVA VID 1880)

CODA 2
90%WO, 10%NY



B929
(KVA COD 103)

B930
(KVA COD 242)

B931
(KVA COD 422)

B967
(KVA COD 762)

WO(new wool), CO(cotton), VI(viscose),
PA(polyacrylic), LI(linen), PE(polyester), NY(nylon)