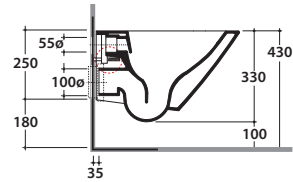
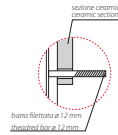
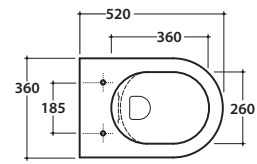
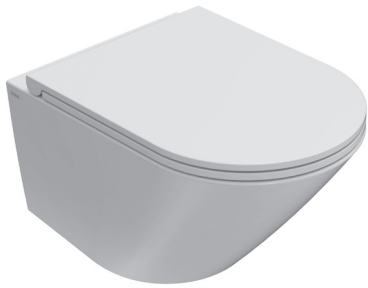


FORTY3 WALL-HUNG WC NO RIM

FOS07BI

CE EN 997:2015

GLOBO



Ceramic antibacterial effect
BATAFORM®



Bagno di Colore



SENZABRIDA®



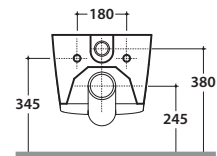
Glazed product with
CERASLIDE®



Drain 4/2,6 lt

Cod. **FOS07BI**

Wall-hung Wc No-rim 52.36 h33 cm. Drain 4 / 2,6 Lt. Fixing kit included. Weight 18 Kg



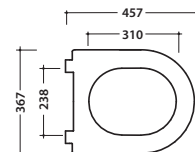
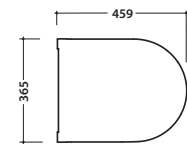
Seat-cover with hinge system
to quick release



Antibacterial treatment on toilet seats
in shiny white

Cod. **FOR20BI**

Removable duroplast seat-cover with soft-closing system. Weight 3,5 Kg



Cod. **VA132**

Flow reducer.



Cod. **PU001**

Acoustic and crash protection.



Cod. **FI002**

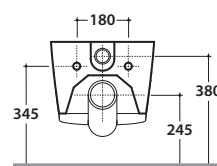
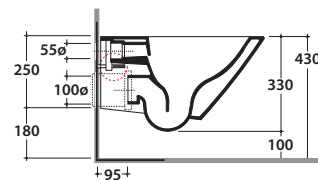
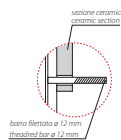
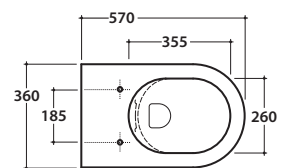
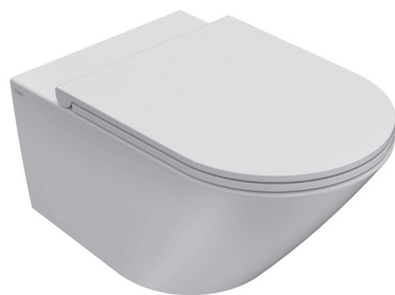
Fixing brackets for W/H sanitary. Weight 2,5 Kg

FORTY3 WALL-HUNG WC NO RIM

FOS05BI

CE EN 997:2015

GLOBO



Ceramic antibacterial effect BATAFORM®



Bagno di Colore



SENZABRIDA®



Glazed product with CERASLIDE®



Drain 4/2,6 lt

Cod. **FOS05BI**

Wall-hung Wc No rim 57.36 h33 cm. Drain 4 / 2,6 Lt. Fixing kit included. Weight 19 Kg



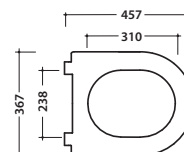
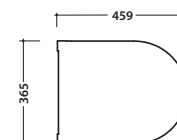
Seat-cover with hinge system to quick release



Antibacterial treatment on toilet seats in shiny white

Cod. **FOR20BI**

Removable duroplast seat-cover with soft-closing system. Weight 3,5 Kg



Cod. **VA132**

Flow reducer.



Cod. **PU001**

Acoustic and crash protection.



Cod. **FI002**

Fixing brackets for W/H sanitary. Weight 2,5 Kg

water label	
Average flushing volume (litres)	
Max. 3.5	3,38
Max. 4.5	
Max. 5.5	
Max. 6	
> 6	

www.europeanwaterlabel.eu