

Ditre Italia Products

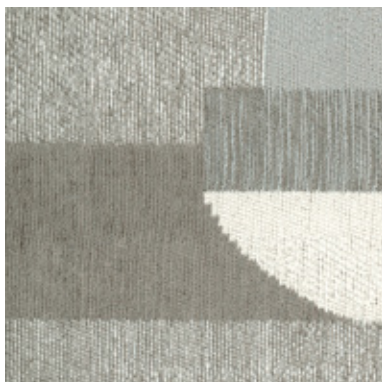
2022

Tessuti
Fabrics

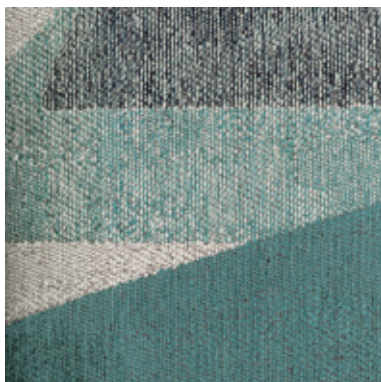
DITRE
italia

CAT. U

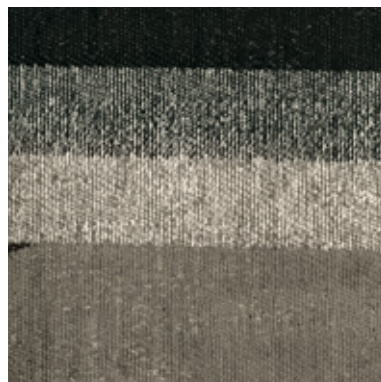
Uniform



UNIFORM 002



UNIFORM 005



UNIFORM 008



UNIFORM 010



UNIFORM 014

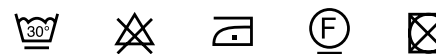


UNIFORM 018

INFORMAZIONI TECNICHE / TECHNICAL INFORMATION

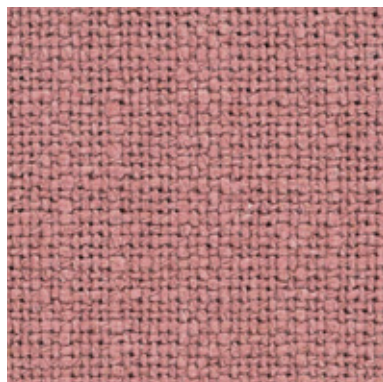
Composizione / composition	77% VI - 23% PL
Martindale / martindale	25.000 cicli/cycles
Pilling / Pilling	4

MANUTENZIONE / MAINTENANCE





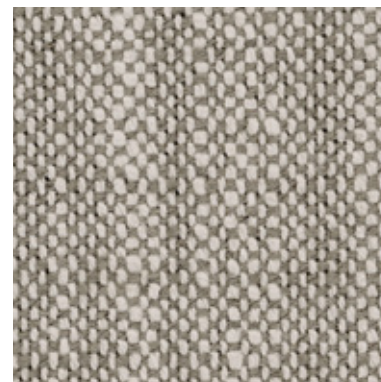
TRUST 503



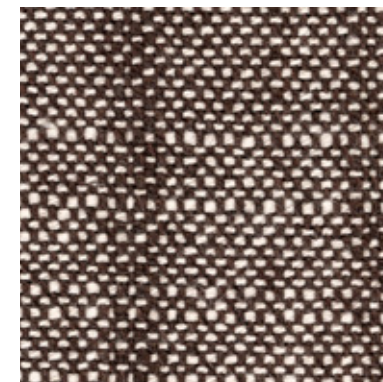
TRUST 512



TRUST 601



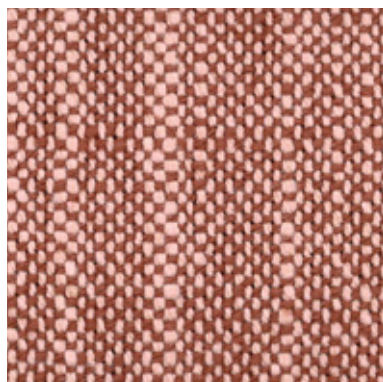
TRUST 605



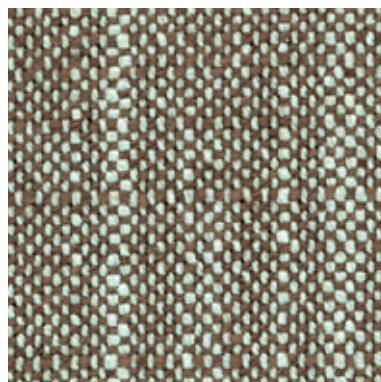
TRUST 607



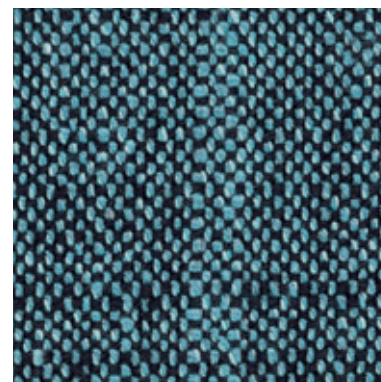
TRUST 611



TRUST 615



TRUST 619



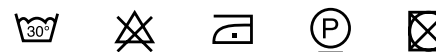
TRUST 690

INFORMAZIONI TECNICHE / TECHNICAL INFORMATION

Composizione / composition	80% RCO - 20% PL
Martindale / martindale	55.000 cicli/cycles
Pilling / Pilling	3/4



MANUTENZIONE / MAINTENANCE





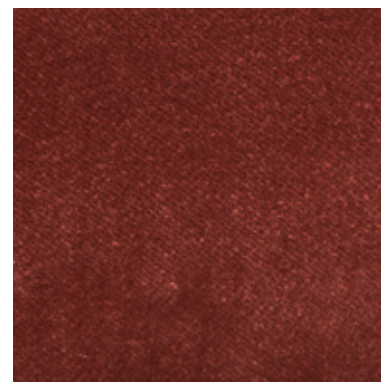
TWIN 001



TWIN 002



TWIN 004



TWIN 007



TWIN 008



TWIN 009



TWIN 011



TWIN 012



TWIN 013



TWIN 017

INFORMAZIONI TECNICHE / TECHNICAL INFORMATION

Composizione / composition	100% RPL
Martindale / martindale	50.000 cicli/cycles
Pilling / Pilling	4

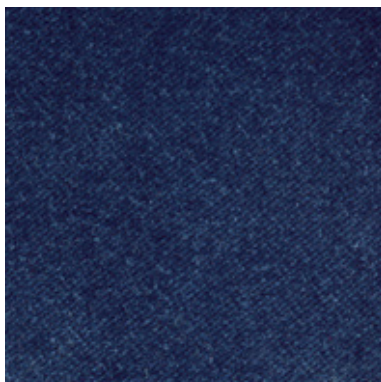


MANUTENZIONE / MAINTENANCE





TWIN 018

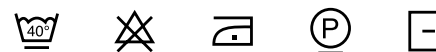


TWIN 020

INFORMAZIONI TECNICHE / TECHNICAL INFORMATION

Composizione / composition	100% RPL
Martindale / martindale	50.000 cicli/cycles
Pilling / Pilling	4

 **Eco-Friendly**

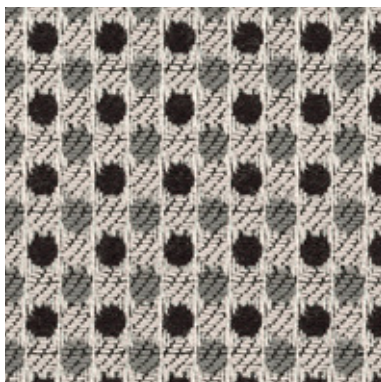
MANUTENZIONE / MAINTENANCE

CAT. T

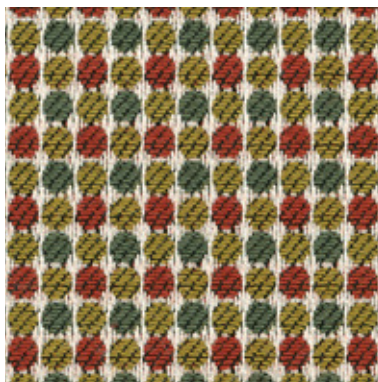
Twist



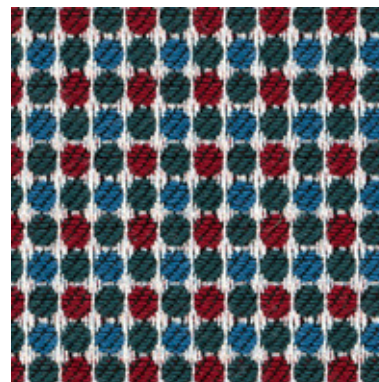
TWIST 05



TWIST 07



TWIST 09



TWIST 10



TWIST 11

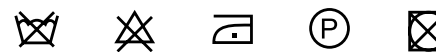


TWIST 12

INFORMAZIONI TECNICHE / TECHNICAL INFORMATION

Composizione / composition	77% VI - 23% PL
Martindale / martindale	20.000 cicli/cycles
Pilling / Pilling	4

MANUTENZIONE / MAINTENANCE



CAT. T

Trend



TREND 001



TREND 002



TREND 003



TREND 004



TREND 010



TREND 011



TREND 033



TREND 034



TREND 035



TREND 039

INFORMAZIONI TECNICHE / TECHNICAL INFORMATION

Composizione / composition	55% VI - 45% CO
Martindale / martindale	50.000 cicli/cycles
Pilling / Pilling	4

MANUTENZIONE / MAINTENANCE



CAT. T

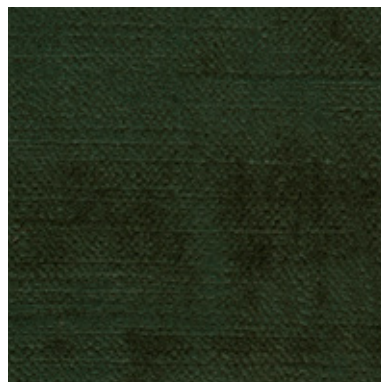
Trend



TREND 044



TREND 052



TREND 068



TREND 088



TREND 231



TREND 232



TREND 233

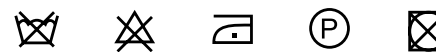


TREND 234

INFORMAZIONI TECNICHE / TECHNICAL INFORMATION

Composizione / composition	55% VI - 45% CO
Martindale / martindale	50.000 cicli/cycles
Pilling / Pilling	4

MANUTENZIONE / MAINTENANCE



CAT. T

Travel



TRAVEL 701



TRAVEL 702



TRAVEL 703



TRAVEL 705



TRAVEL 706

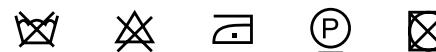


TRAVEL 707

INFORMAZIONI TECNICHE / TECHNICAL INFORMATION

Composizione / composition	54% VI - 38% CO - 8% PL
Martindale / martindale	25.000 cicli/cycles
Pilling / Pilling	4

MANUTENZIONE / MAINTENANCE

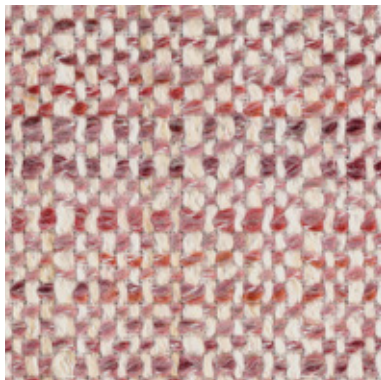


CAT. T

Time



TIME 007



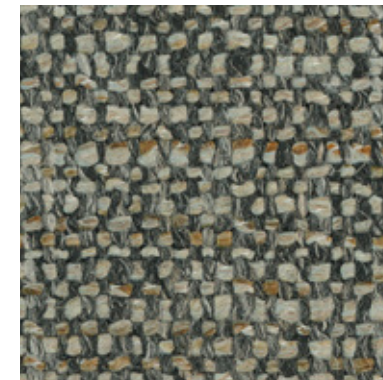
TIME 010



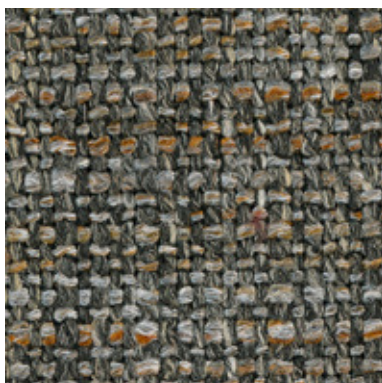
TIME 024



TIME 029



TIME 035



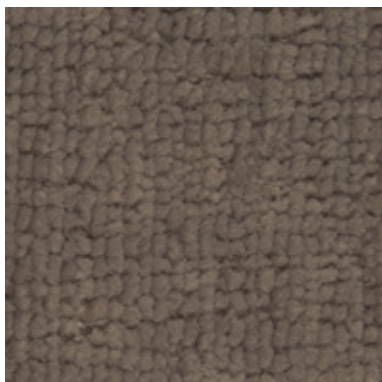
TIME 036

INFORMAZIONI TECNICHE / TECHNICAL INFORMATION

Composizione / composition	49% PC - 14% CO - 14% PL - 23% LI
Martindale / martindale	>35.000 cicli/cycles
Pilling / Pilling	4

MANUTENZIONE / MAINTENANCE





TEXAS 004



TEXAS 008



TEXAS 011



TEXAS 013



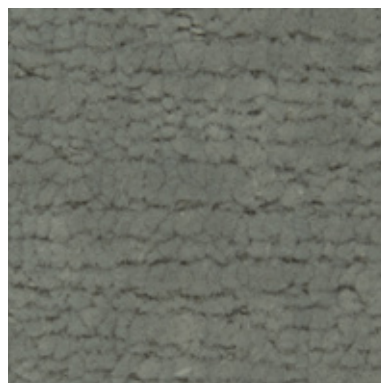
TEXAS 015



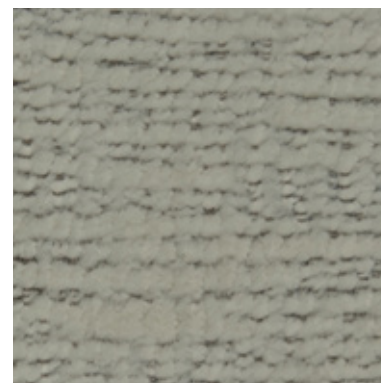
TEXAS 016



TEXAS 018



TEXAS 022



TEXAS 023



TEXAS 025

INFORMAZIONI TECNICHE / TECHNICAL INFORMATION

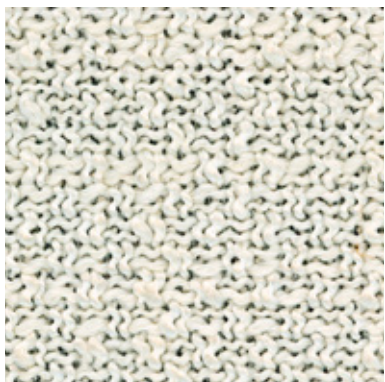
Composizione / composition	72 % RPET - 28% PL
Martindale / martindale	60.000 cicli/cycles
Pilling / Pilling	5



Eco-Friendly

MANUTENZIONE / MAINTENANCE





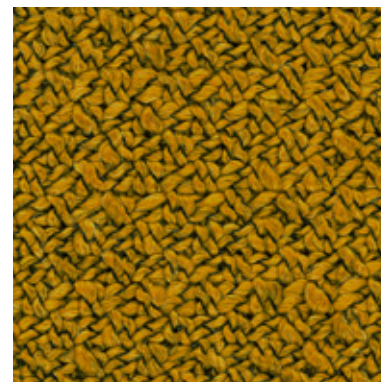
TASK 101



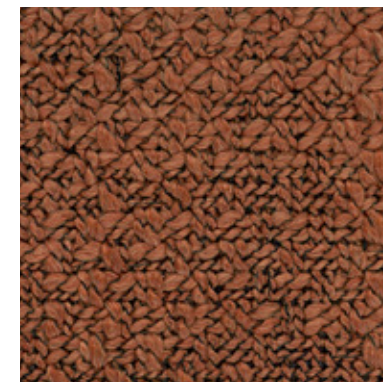
TASK 104



TASK 105



TASK 106



TASK 108



TASK 110



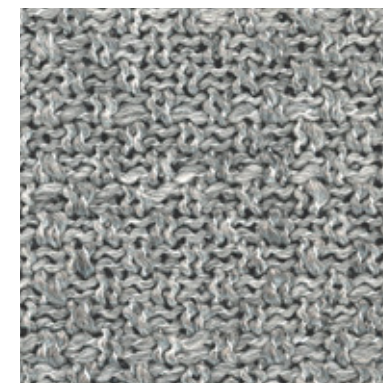
TASK 111



TASK 114



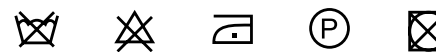
TASK 115

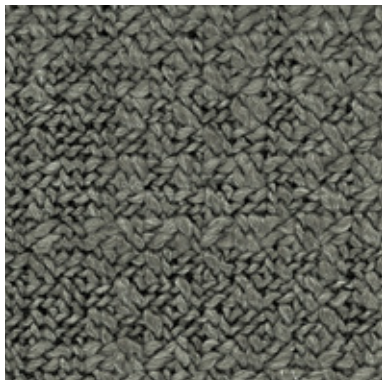


TASK 116

INFORMAZIONI TECNICHE / TECHNICAL INFORMATION

Composizione / composition	45% PC - 25% PL - 22% CO - 8% WO
Martindale / martindale	30.000 cicli/cycles
Pilling / Pilling	4

MANUTENZIONE / MAINTENANCE



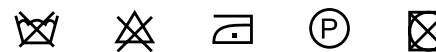
TASK 117



TASK 118

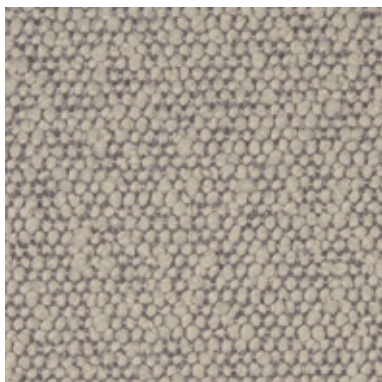
INFORMAZIONI TECNICHE / TECHNICAL INFORMATION

Composizione / composition	45% PC - 25% PL - 22% CO - 8% WO
Martindale / martindale	30.000 cicli/cycles
Pilling / Pilling	4

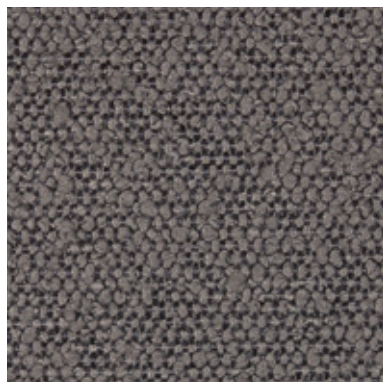
MANUTENZIONE / MAINTENANCE

CAT. P

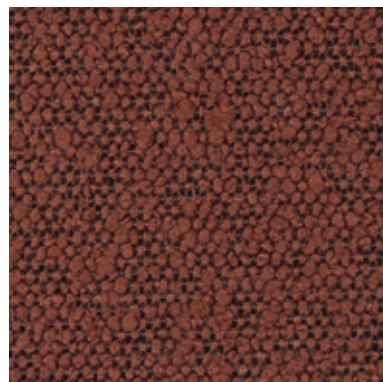
Princess



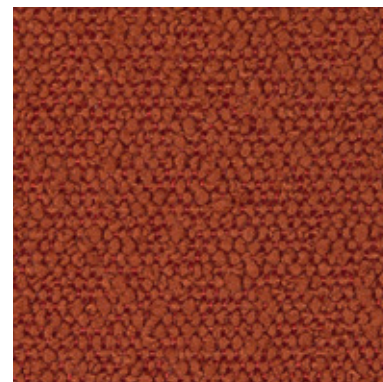
PRINCESS 901



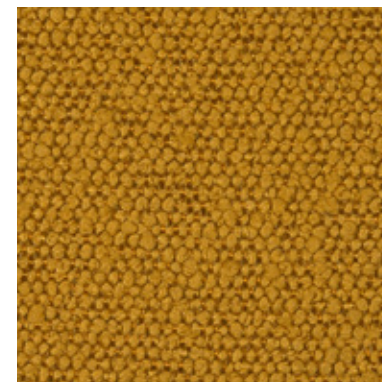
PRINCESS 101



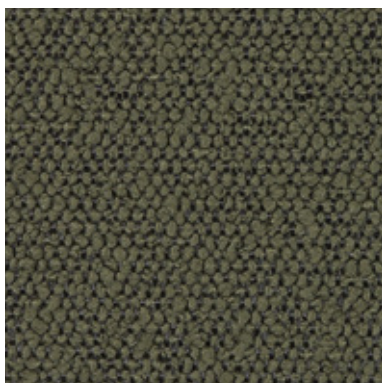
PRINCESS 300



PRINCESS 304



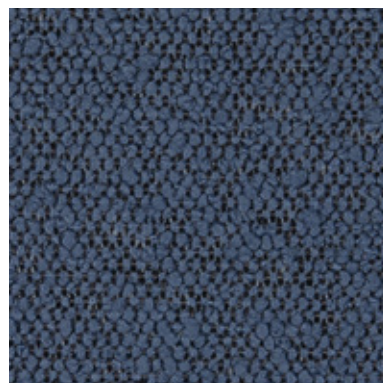
PRINCESS 400



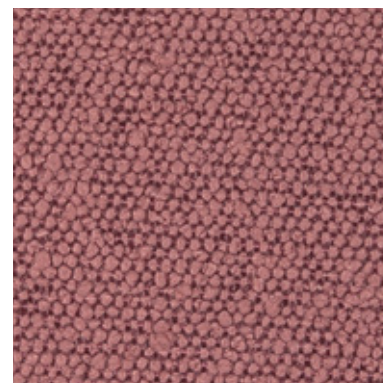
PRINCESS 502



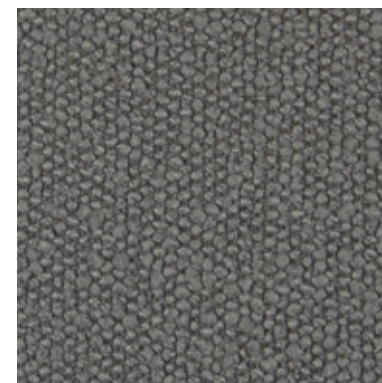
PRINCESS 600



PRINCESS 604



PRINCESS 705



PRINCESS 802

INFORMAZIONI TECNICHE / TECHNICAL INFORMATION

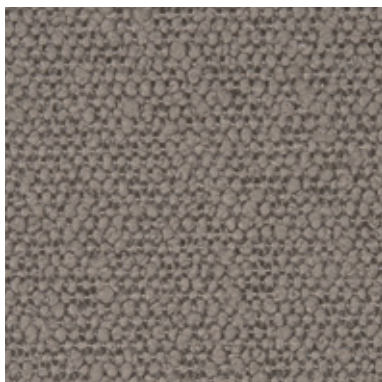
Composizione / composition	100% PLFR
Martindale / martindale	80.000 cicli/cycles
Pilling / Pilling	5

MANUTENZIONE / MAINTENANCE

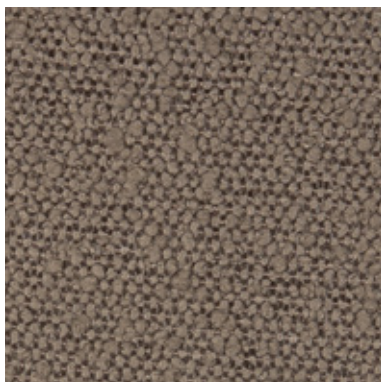


CAT. P

Princess



PRINCESS 803



PRINCESS 903

INFORMAZIONI TECNICHE / TECHNICAL INFORMATION

Composizione / composition	100% PLFR
Martindale / martindale	80.000 cicli/cycles
Pilling / Pilling	5

MANUTENZIONE / MAINTENANCE





POTTER 501



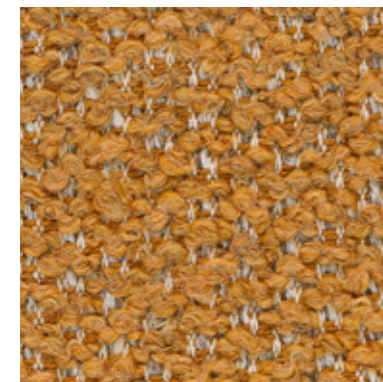
POTTER 503



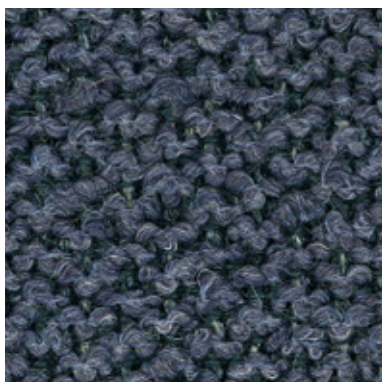
POTTER 509



POTTER 510



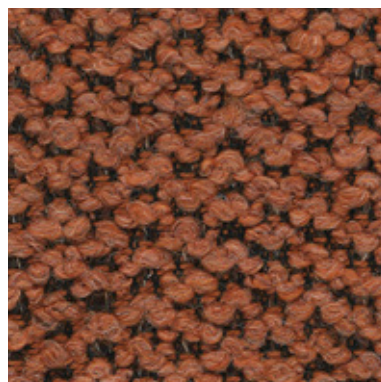
POTTER 512



POTTER 522



POTTER 524



POTTER 529



POTTER 530

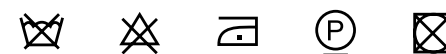


POTTER 539

INFORMAZIONI TECNICHE / TECHNICAL INFORMATION

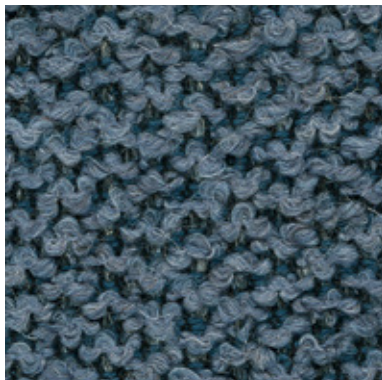
Composizione / composition	34% PC - 24% CO - 14% WO - 12% VI - 12% PL - 4% LI
Martindale / martindale	30.000 cicli/cycles
Pilling / Pilling	4

MANUTENZIONE / MAINTENANCE



CAT. P

Potter



POTTER 540

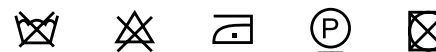


POTTER 543

INFORMAZIONI TECNICHE / TECHNICAL INFORMATION

Composizione / composition	34% PC - 24% CO - 14% WO - 12% VI - 12% PL - 4% LI
Martindale / martindale	30.000 cicli/cycles
Pilling / Pilling	4

MANUTENZIONE / MAINTENANCE



CAT. P

Post



POST 055



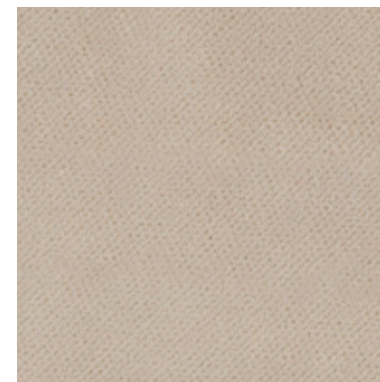
POST 058



POST 059



POST 061



POST 062



POST 071



POST 075



POST 076



POST 081



POST 086

INFORMAZIONI TECNICHE / TECHNICAL INFORMATION

Composizione / composition	100% PL
Martindale / martindale	60.000 cicli/cycles
Pilling / Pilling	5

MANUTENZIONE / MAINTENANCE



CAT. P

Post



POST 089



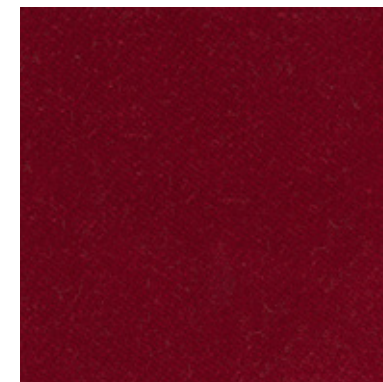
POST 093



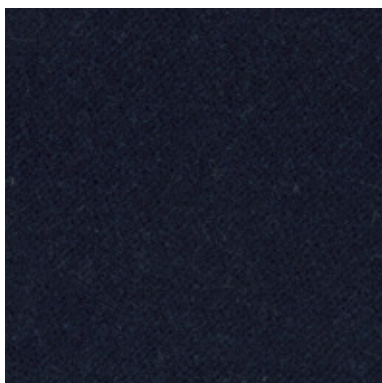
POST 094



POST 096



POST 101



POST 203



POST 205



POST 208

INFORMAZIONI TECNICHE / TECHNICAL INFORMATION

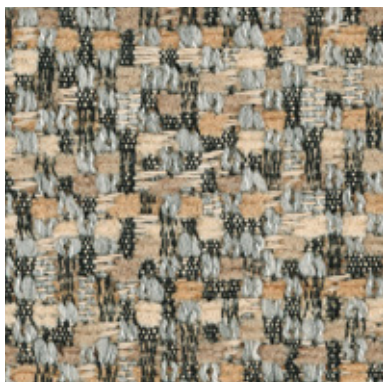
Composizione / composition	100% PL
Martindale / martindale	60.000 cicli/cycles
Pilling / Pilling	5

MANUTENZIONE / MAINTENANCE





POSITANO 105



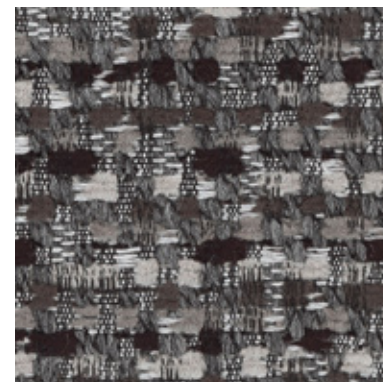
POSITANO 108



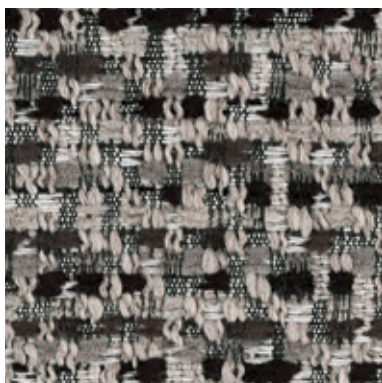
POSITANO 114



POSITANO 134



POSITANO 139



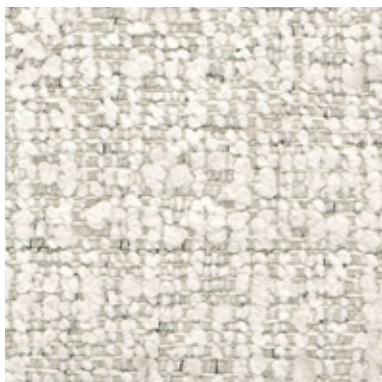
POSITANO 141

INFORMAZIONI TECNICHE / TECHNICAL INFORMATION

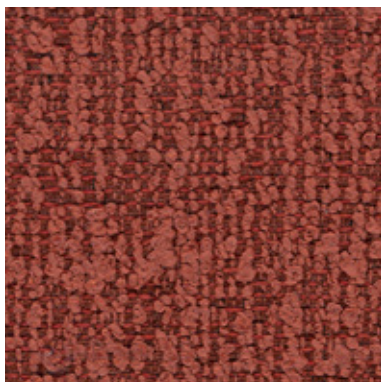
Composizione / composition	58% PVC - 14% PL 15% WO 13% CO
Martindale / martindale	20.000 cicli/cycles
Pilling / Pilling	5

MANUTENZIONE / MAINTENANCE

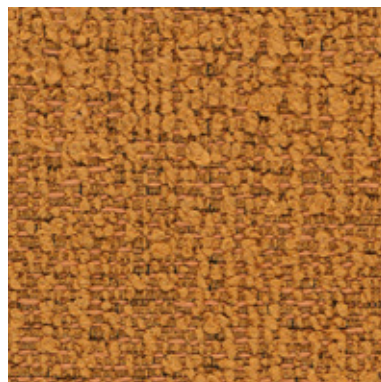




PORTO 101



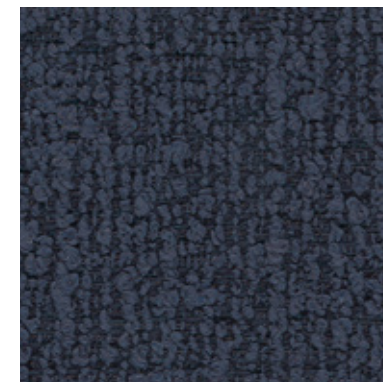
PORTO 108



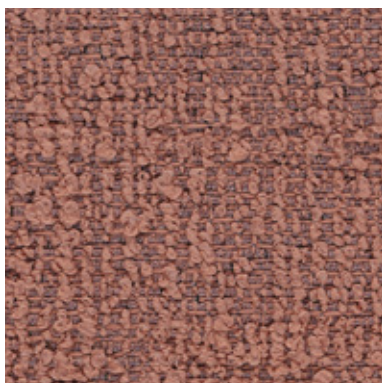
PORTO 109



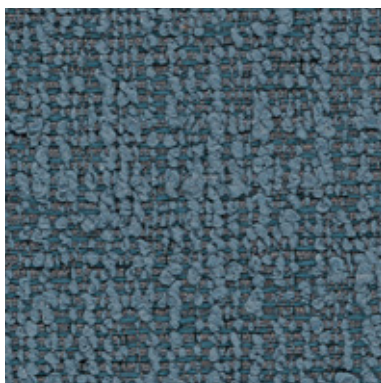
PORTO 110



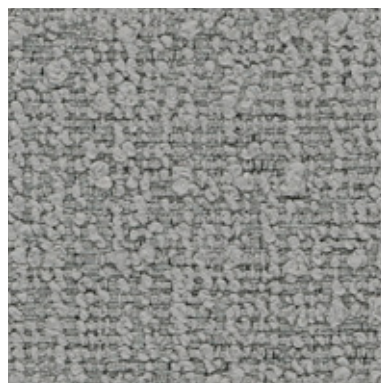
PORTO 113



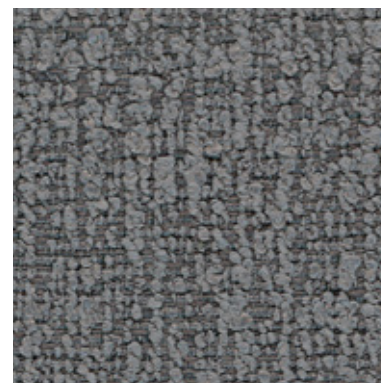
PORTO 117



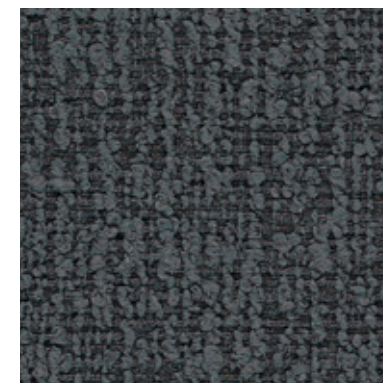
PORTO 120



PORTO 123



PORTO 125

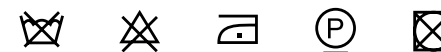


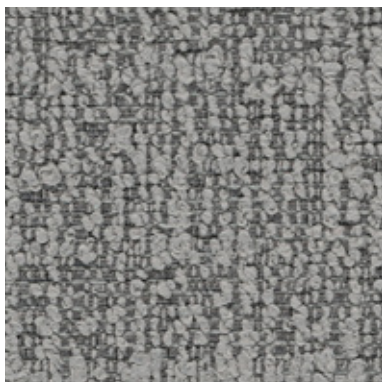
PORTO 127

INFORMAZIONI TECNICHE / TECHNICAL INFORMATION

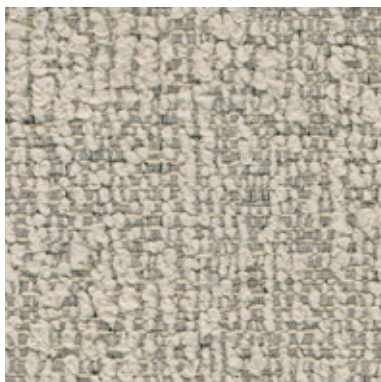
Composizione / composition	46% RPL - 37% PL - 17% RCO
Martindale / martindale	25.000 cicli/cycles
Pilling / Pilling	4

 **Eco-friendly**

MANUTENZIONE / MAINTENANCE



PORTO 202

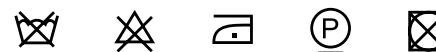


PORTO 204

INFORMAZIONI TECNICHE / TECHNICAL INFORMATION

Composizione / composition	46% RPL - 37% PL - 17% RCO
Martindale / martindale	25.000 cicli/cycles
Pilling / Pilling	4

 **Eco-friendly**

MANUTENZIONE / MAINTENANCE

CAT. P

Plaza



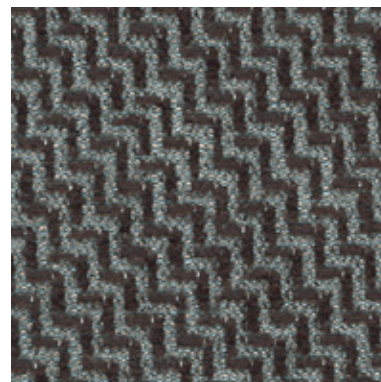
PLAZA 003



PLAZA 004



PLAZA 005



PLAZA 008



PLAZA 009

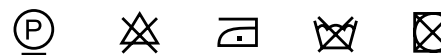


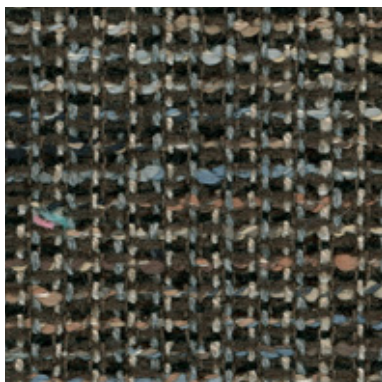
PLAZA 011

INFORMAZIONI TECNICHE / TECHNICAL INFORMATION

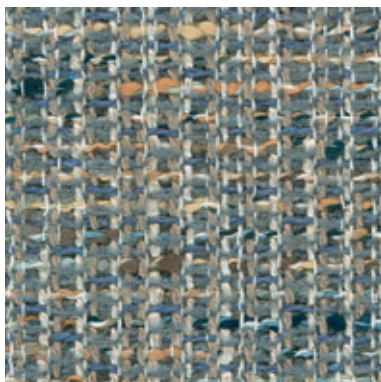
Composizione / composition	32% VI - 30% CO - 21% PC 16% LI - 1% PL
Martindale / martindale	25.000 cicli/cycles
Pilling / Pilling	4

MANUTENZIONE / MAINTENANCE

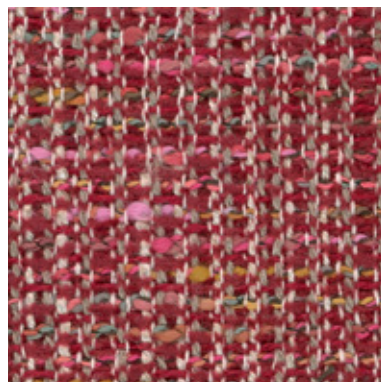




PLAY 001



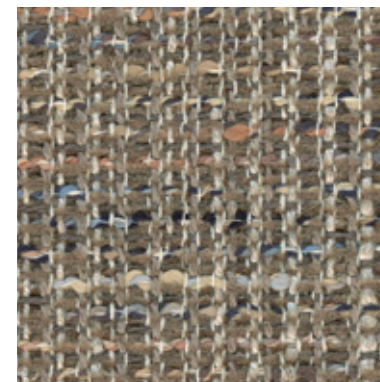
PLAY 002



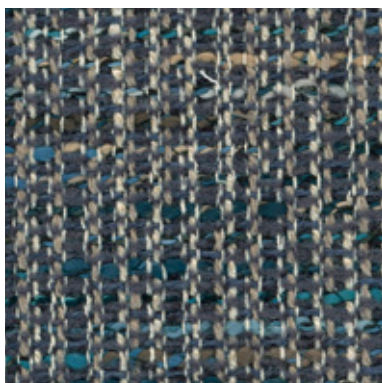
PLAY 004



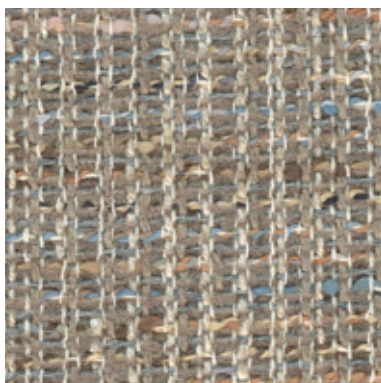
PLAY 007



PLAY 008



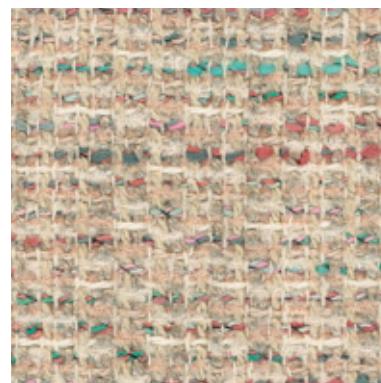
PLAY 013



PLAY 015



PLAY 018

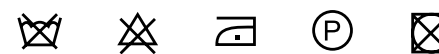


PLAY 021

INFORMAZIONI TECNICHE / TECHNICAL INFORMATION

Composizione / composition	55% CO - 16% PL - 13% VI - 12% PC - 3%LI - 1% PA
Martindale / martindale	20.000 cicli/cycles
Pilling / Pilling	4

MANUTENZIONE / MAINTENANCE





PICTURE 501



PICTURE 502



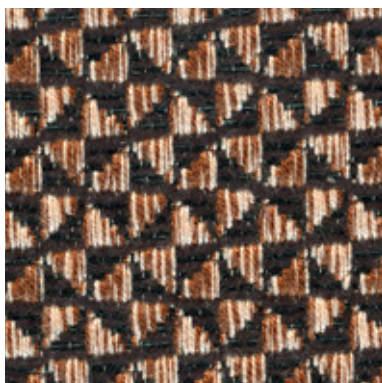
PICTURE 503



PICTURE 505



PICTURE 506

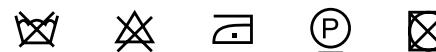


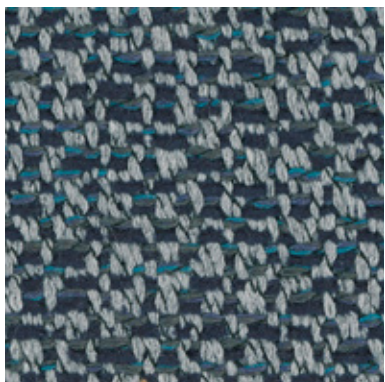
PICTURE 507

INFORMAZIONI TECNICHE / TECHNICAL INFORMATION

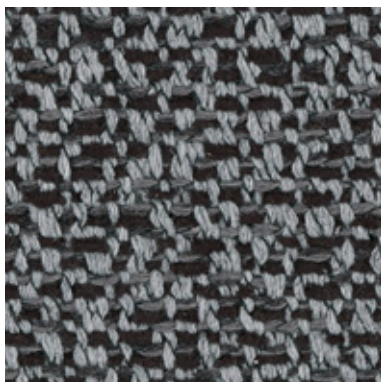
Composizione / composition	58% VI - 28% CO - 14% PL
Martindale / martindale	30.000 cicli/cycles
Pilling / Pilling	4

MANUTENZIONE / MAINTENANCE

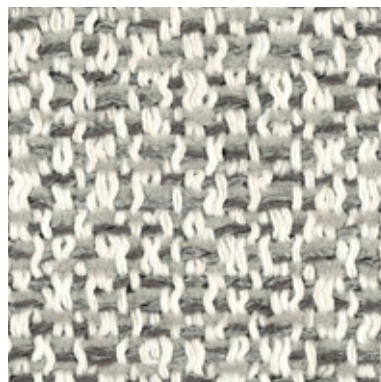




PHILIP 012



PHILIP 016



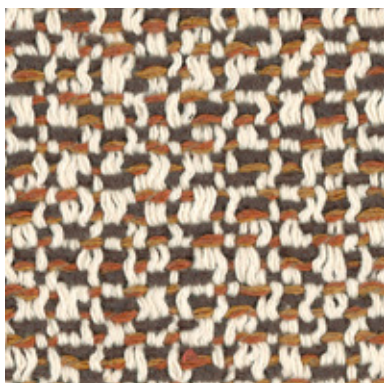
PHILIP 081



PHILIP 092



PHILIP 093

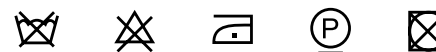


PHILIP 094

INFORMAZIONI TECNICHE / TECHNICAL INFORMATION

Composizione / composition	54% RCO - 31% PL - 15% PC
Martindale / martindale	25.000 cicli/cycles
Pilling / Pilling	4

 **Eco-friendly**

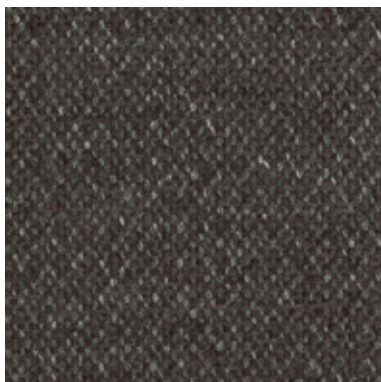
MANUTENZIONE / MAINTENANCE

CAT. P

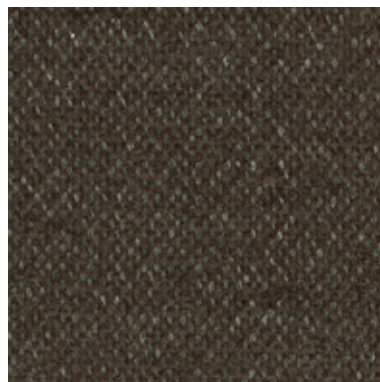
Petra



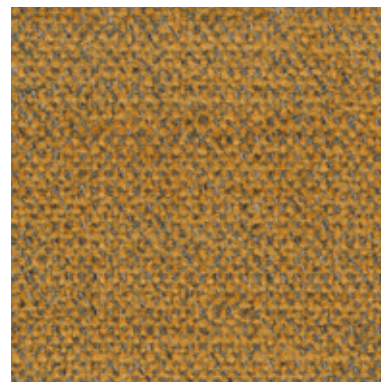
PETRA 002



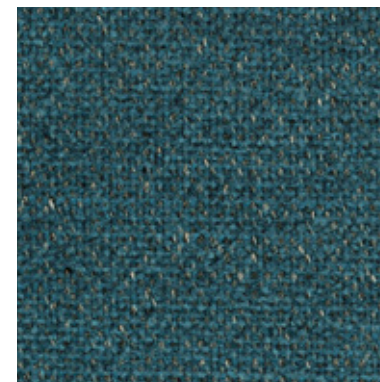
PETRA 009



PETRA 010



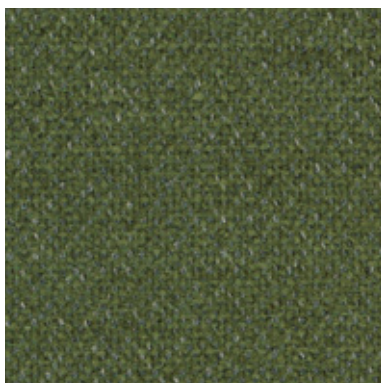
PETRA 014



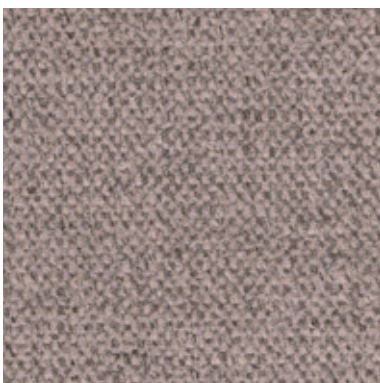
PETRA 020



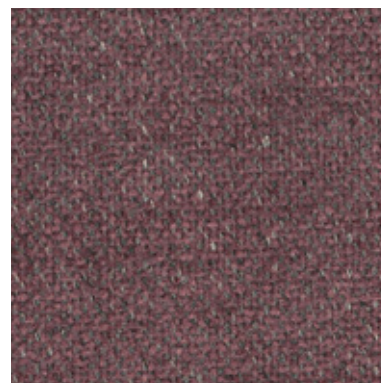
PETRA 022



PETRA 026



PETRA 029



PETRA 031

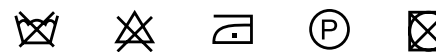


PETRA 036

INFORMAZIONI TECNICHE / TECHNICAL INFORMATION

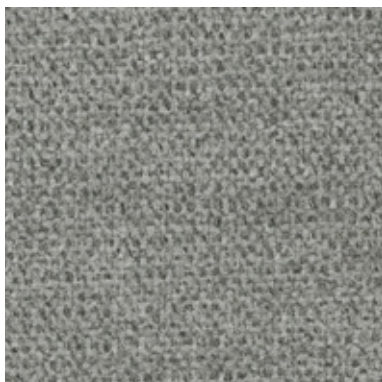
Composizione / composition	41% CO - 36% PL - 23% PC
Martindale / martindale	25.000 cicli/cycles
Pilling / Pilling	5

MANUTENZIONE / MAINTENANCE

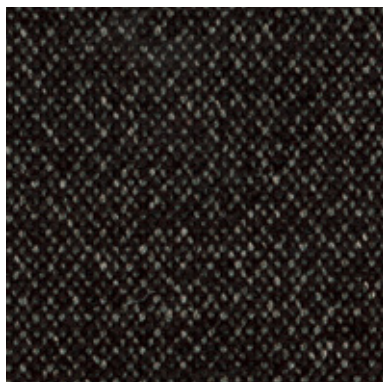


CAT. P

Petra



PETRA 037



PETRA 038



PETRA 040



PETRA 041

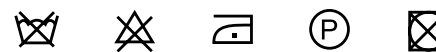


PETRA 042

INFORMAZIONI TECNICHE / TECHNICAL INFORMATION

Composizione / composition	41% CO - 36% PL - 23% PC
Martindale / martindale	25.000 cicli/cycles
Pilling / Pilling	5

MANUTENZIONE / MAINTENANCE



CAT. P

Peggy



PEGGY 25



PEGGY 27



PEGGY 102



PEGGY 110



PEGGY 111



PEGGY 116



PEGGY 117



PEGGY 121



PEGGY 201



PEGGY 204

INFORMAZIONI TECNICHE / TECHNICAL INFORMATION

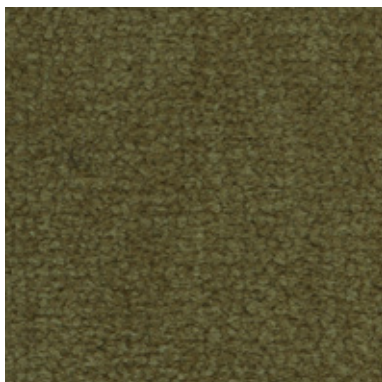
Composizione / composition	80% PL - 20% CO
Martindale / martindale	100.000 cicli/cycles
Pilling / Pilling	4

MANUTENZIONE / MAINTENANCE

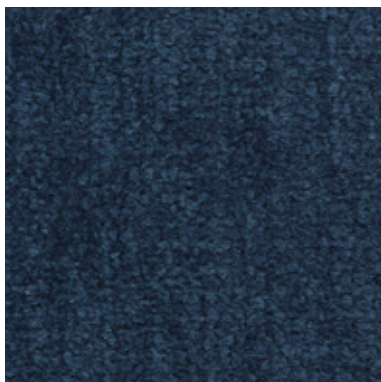


CAT. P

Peggy



PEGGY 207



PEGGY 209

INFORMAZIONI TECNICHE / TECHNICAL INFORMATION

Composizione / composition	80% PL - 20% CO
Martindale / martindale	100.000 cicli/cycles
Pilling / Pilling	4

MANUTENZIONE / MAINTENANCE

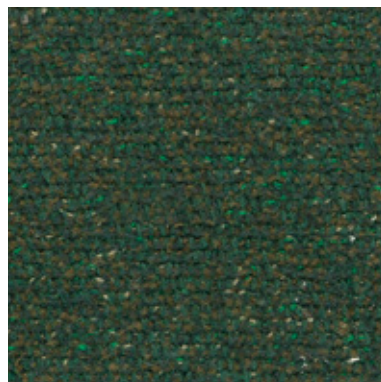




PECHINO 201



PECHINO 202



PECHINO 215



PECHINO 217



PECHINO 219



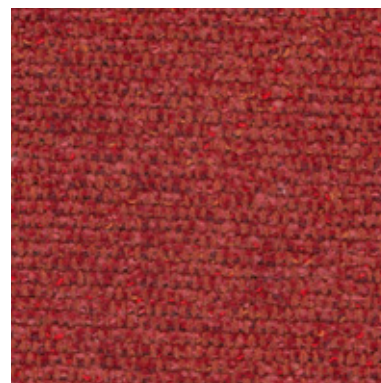
PECHINO 221



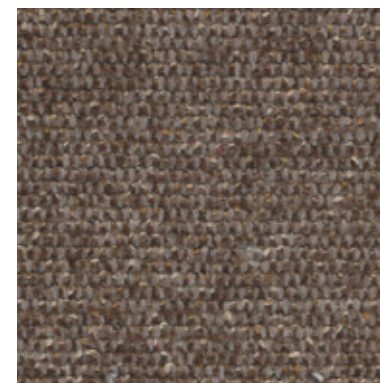
PECHINO 233



PECHINO 238



PECHINO 277



PECHINO 338

INFORMAZIONI TECNICHE / TECHNICAL INFORMATION

Composizione / composition	60% RCO - 40% PL
Martindale / martindale	60.000 cicli/cycles
Pilling / Pilling	5

**Eco-friendly****MANUTENZIONE / MAINTENANCE**

CAT. P

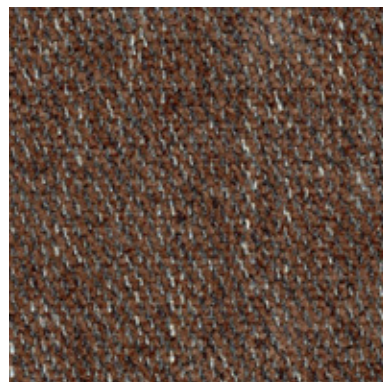
Partner



PARTNER 002



PARTNER 005



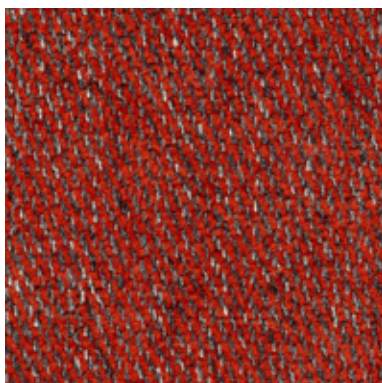
PARTNER 007



PARTNER 015



PARTNER 021



PARTNER 064



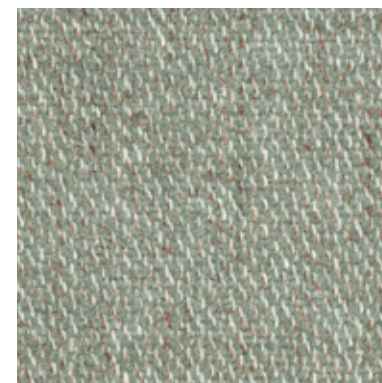
PARTNER 105



PARTNER 115



PARTNER 501



PARTNER 505

INFORMAZIONI TECNICHE / TECHNICAL INFORMATION

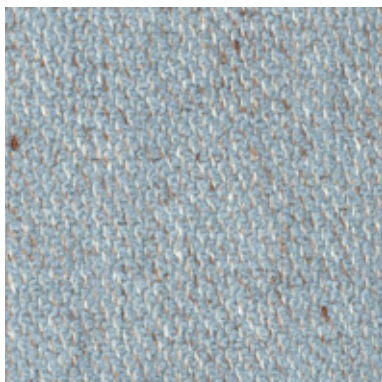
Composizione / composition	43% PL - 23% CO - 17% VI - 17% LI
Martindale / martindale	30.000 cicli/cycles
Pilling / Pilling	4

MANUTENZIONE / MAINTENANCE



CAT. P

Partner



PARTNER 506



PARTNER 509

INFORMAZIONI TECNICHE / TECHNICAL INFORMATION

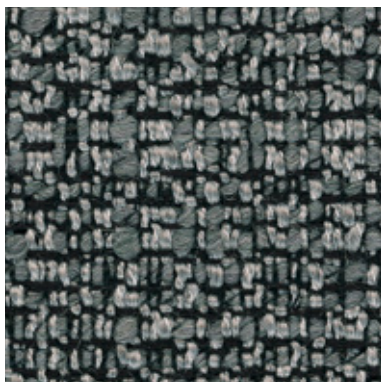
Composizione / composition	43% PL - 23% CO - 17% VI - 17% LI
Martindale / martindale	30.000 cicli/cycles
Pilling / Pilling	4

MANUTENZIONE / MAINTENANCE





PABLO 09



PABLO 13



PABLO 49



PABLO 50



PABLO 75



PABLO 96



PABLO 154



PABLO 163



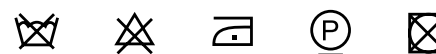
PABLO 168



PABLO 171

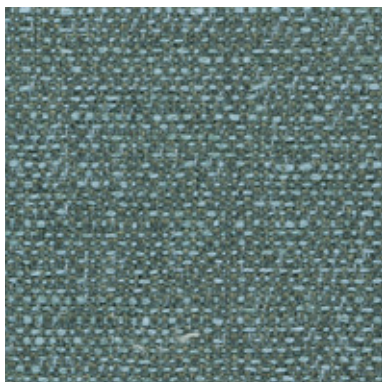
INFORMAZIONI TECNICHE / TECHNICAL INFORMATION

Composizione / composition	23% WO - 48% PC - 12% PL - 7% CO - 10% NY
Martindale / martindale	24.000 cicli/cycles
Pilling / Pilling	4

MANUTENZIONE / MAINTENANCE

CAT. M

Music



MUSIC 009



MUSIC 046



MUSIC 051



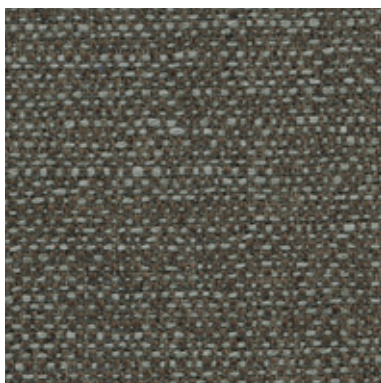
MUSIC 057



MUSIC 059



MUSIC 061



MUSIC 063



MUSIC 065

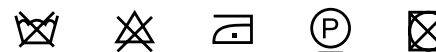


MUSIC 083

INFORMAZIONI TECNICHE / TECHNICAL INFORMATION

Composizione / composition	66% PC - 17% LI - 9% CO - 8% VI
Martindale / martindale	30.000 cicli/cycles
Pilling / Pilling	4

MANUTENZIONE / MAINTENANCE



CAT. M

Miami



MIAMI 020



MIAMI 040



MIAMI 041



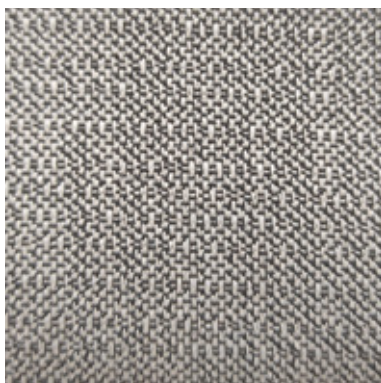
MIAMI 042



MIAMI 201



MIAMI 302



MIAMI 403

INFORMAZIONI TECNICHE / TECHNICAL INFORMATION

Composizione / composition	30 % CO - 70% PL
Martindale / martindale	20.000 cicli/cycles
Pilling / Pilling	4

MANUTENZIONE / MAINTENANCE



CAT. M

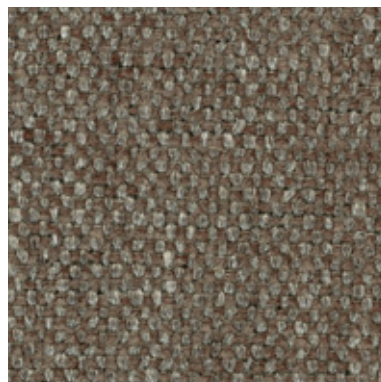
Meghan



MEGHAN 04



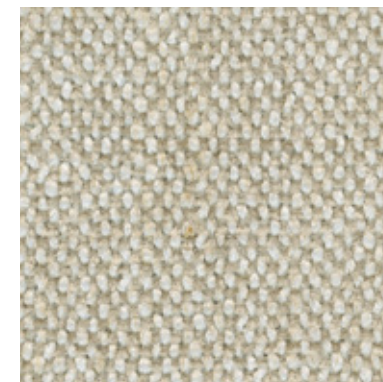
MEGHAN 13



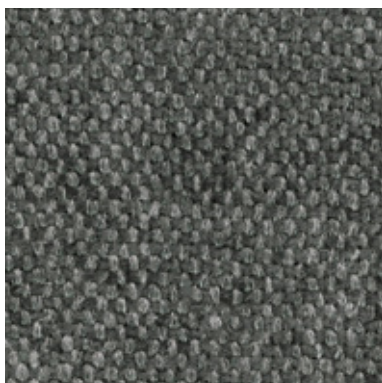
MEGHAN 19



MEGHAN 24



MEGHAN 56

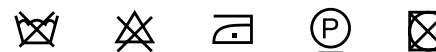


MEGHAN 63

INFORMAZIONI TECNICHE / TECHNICAL INFORMATION

Composizione / composition	66% PC - 11% LI - 12% PL - 11% VI
Martindale / martindale	30.000 cicli/cycles
Pilling / Pilling	4

MANUTENZIONE / MAINTENANCE

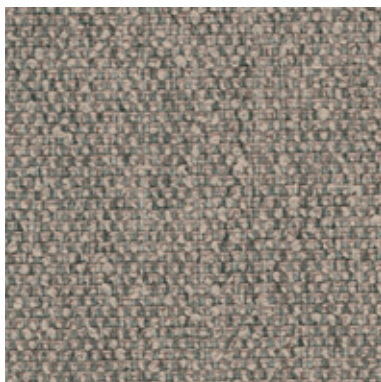


CAT. M

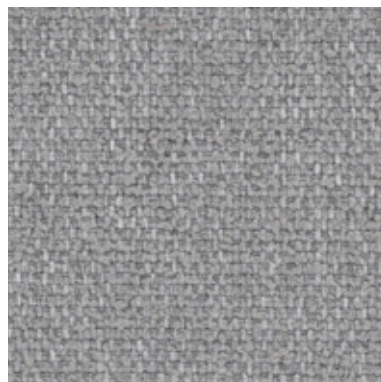
Medley



MEDLEY 002



MEDLEY 004



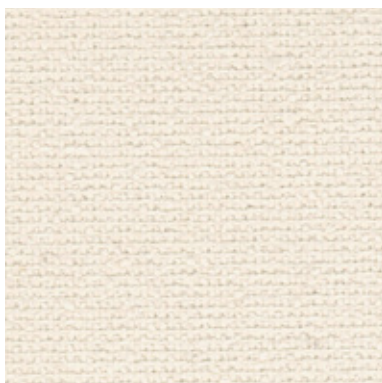
MEDLEY 007



MEDLEY 009



MEDLEY 010



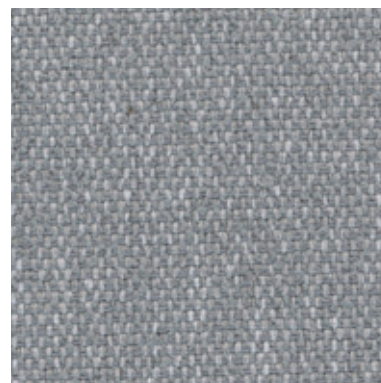
MEDLEY 011



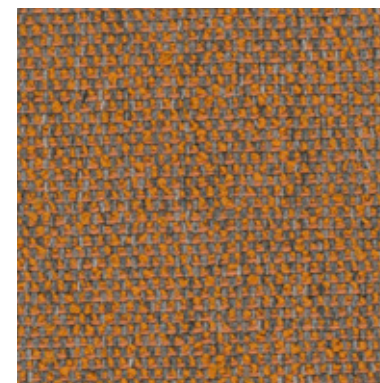
MEDLEY 016



MEDLEY 018



MEDLEY 020

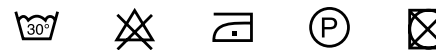


MEDLEY 022

INFORMAZIONI TECNICHE / TECHNICAL INFORMATION

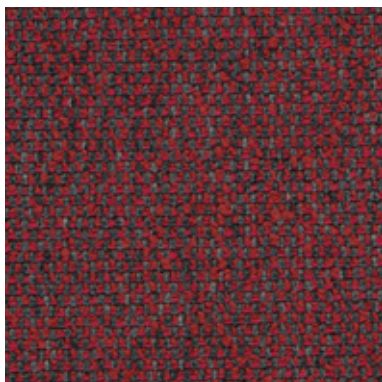
Composizione / composition	85% PL - 15% CO
Martindale / martindale	30.000 cicli/cycles
Pilling / Pilling	5

MANUTENZIONE / MAINTENANCE



CAT. M

Medley



MEDLEY 023



MEDLEY 027

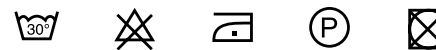


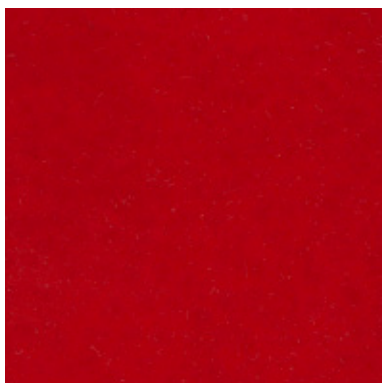
MEDLEY 028

INFORMAZIONI TECNICHE / TECHNICAL INFORMATION

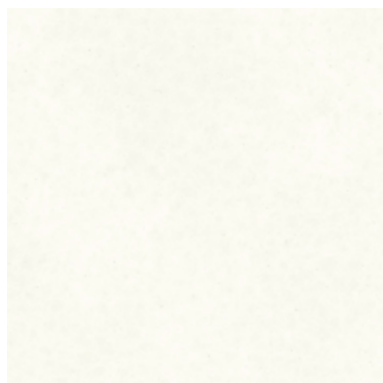
Composizione / composition	85% PL - 15% CO
Martindale / martindale	30.000 cicli/cycles
Pilling / Pilling	5

MANUTENZIONE / MAINTENANCE

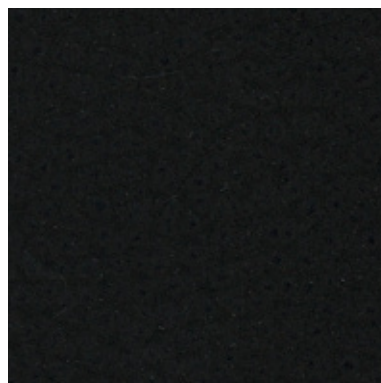




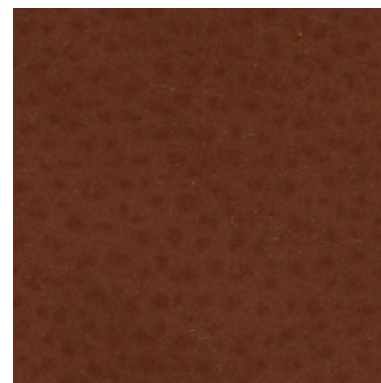
MAYA 000



MAYA 001



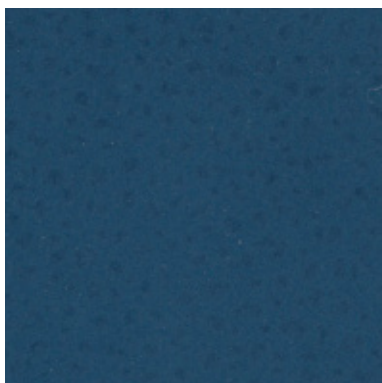
MAYA 016



MAYA 020



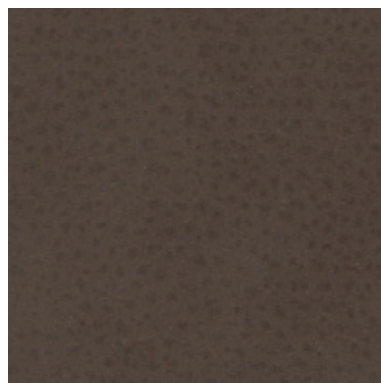
MAYA 100



MAYA 120



MAYA 175



MAYA 240



MAYA 275

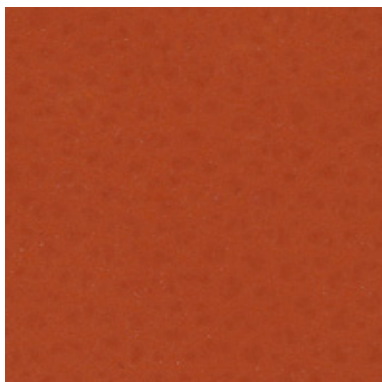


MAYA 280

INFORMAZIONI TECNICHE / TECHNICAL INFORMATION

Composizione / composition	30% CO - 2% PU - 68% PVC
Martindale / martindale	>50.000 cicli/cycles
Pilling / Pilling	-

MANUTENZIONE / MAINTENANCE



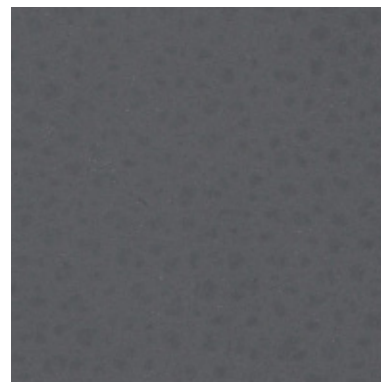
MAYA 410



MAYA 450



MAYA 750



MAYA 791



MAYA 950

INFORMAZIONI TECNICHE / TECHNICAL INFORMATION

Composizione / composition	30% CO - 2% PU - 68% PVC
Martindale / martindale	>50.000 cicli/cycles
Pilling / Pilling	-

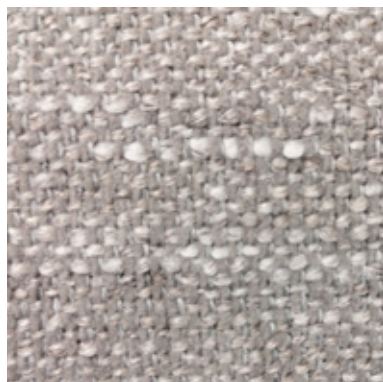
MANUTENZIONE / MAINTENANCE

CAT. M

Martin



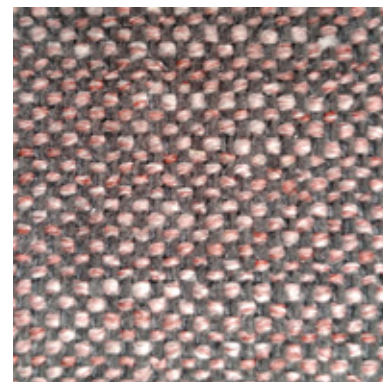
MARTIN 101



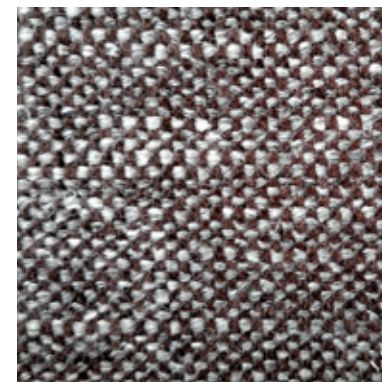
MARTIN 102



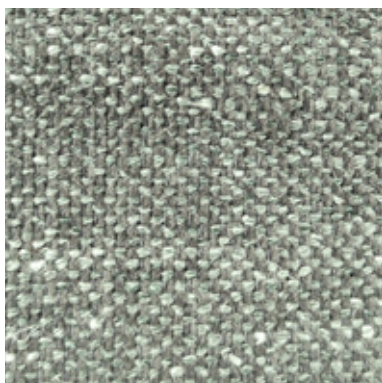
MARTIN 103



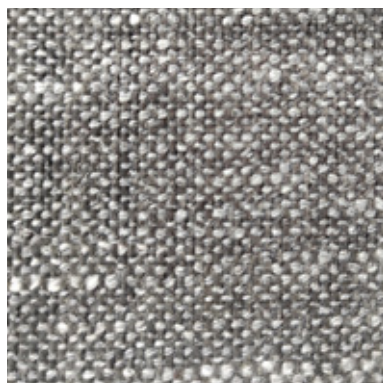
MARTIN 104



MARTIN 105



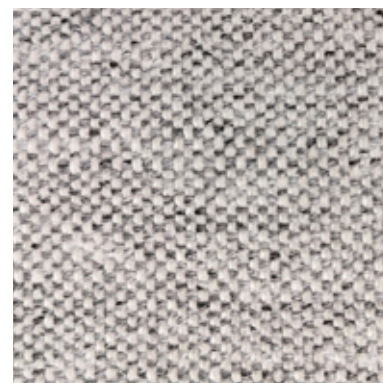
MARTIN 106



MARTIN 107



MARTIN 108



MARTIN 109

INFORMAZIONI TECNICHE / TECHNICAL INFORMATION

Composizione / composition	28% PL - 23% LI - 14% WO - 13% CO - 9% VI - 7% PA - 5% PC
Martindale / martindale	50.000 cicli/cycles
Pilling / Pilling	4

MANUTENZIONE / MAINTENANCE



CAT. M

Manhattan



MANHATTAN 001



MANHATTAN 002



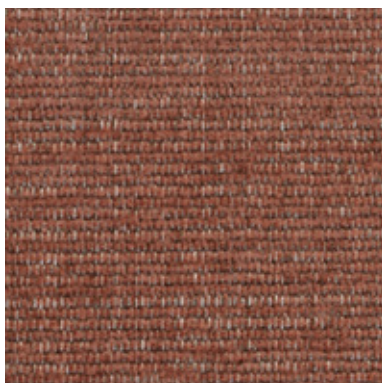
MANHATTAN 009



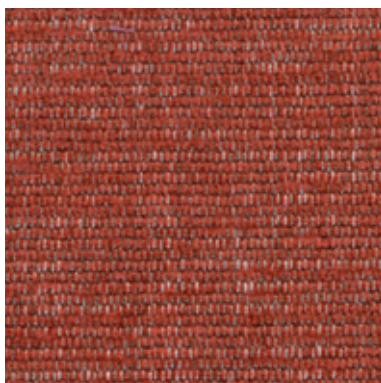
MANHATTAN 012



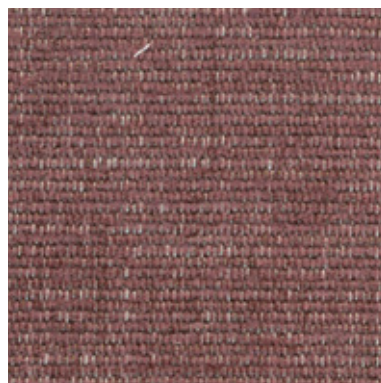
MANHATTAN 017



MANHATTAN 019



MANHATTAN 020



MANHATTAN 021



MANHATTAN 102

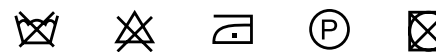


MANHATTAN 103

INFORMAZIONI TECNICHE / TECHNICAL INFORMATION

Composizione / composition	50% PL - 27% PC - 9% CO - 7% LI - 7% VI
Martindale / martindale	25.000 cicli/cycles
Pilling / Pilling	5

MANUTENZIONE / MAINTENANCE

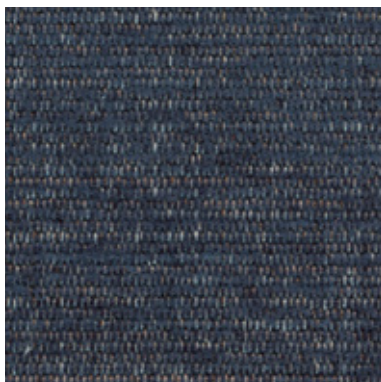


CAT. M

Manhattan



MANHATTAN 104

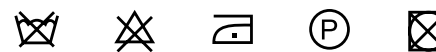


MANHATTAN 105

INFORMAZIONI TECNICHE / TECHNICAL INFORMATION

Composizione / composition	50% PL - 27% PC - 9% CO - 7% LI - 7% VI
Martindale / martindale	25.000 cicli/cycles
Pilling / Pilling	5

MANUTENZIONE / MAINTENANCE



CAT. M

Malindi



MALINDI 701



MALINDI 740



MALINDI 741



MALINDI 742

INFORMAZIONI TECNICHE / TECHNICAL INFORMATION

Composizione / composition	59% CO - 41% PL
Martindale / martindale	20.000 cicli/cycles
Pilling / Pilling	4

MANUTENZIONE / MAINTENANCE

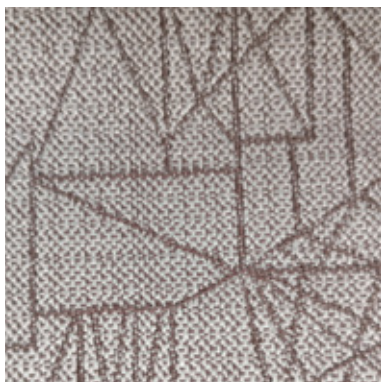


CAT. M

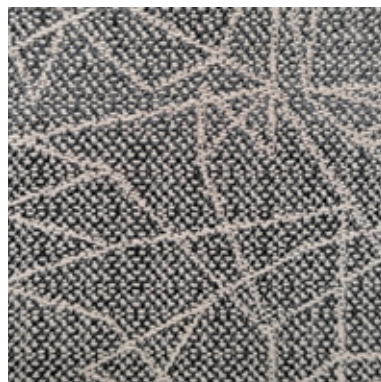
Macro



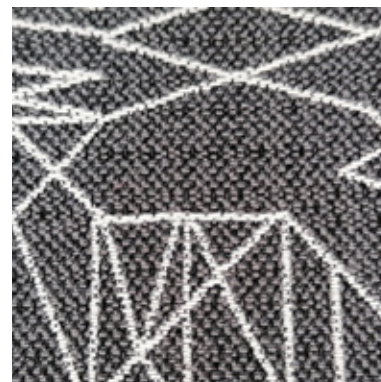
MACRO 002



MACRO 005



MACRO 020



MACRO 022

INFORMAZIONI TECNICHE / TECHNICAL INFORMATION

Composizione / composition	59% CO - 41% PL
Martindale / martindale	20.000 cicli/cycles
Pilling / Pilling	4

MANUTENZIONE / MAINTENANCE

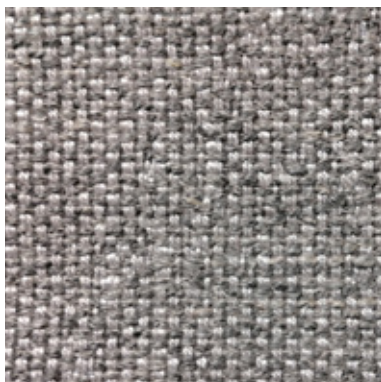


CAT. M

Madera



MADERA 350



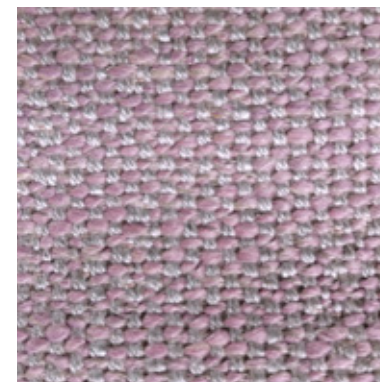
MADERA 360



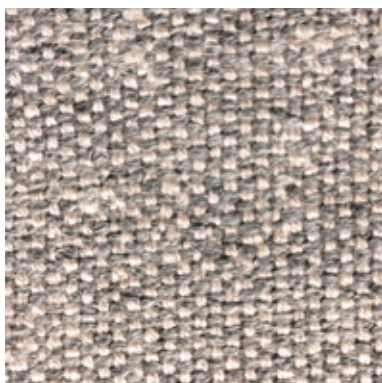
MADERA 361



MADERA 362



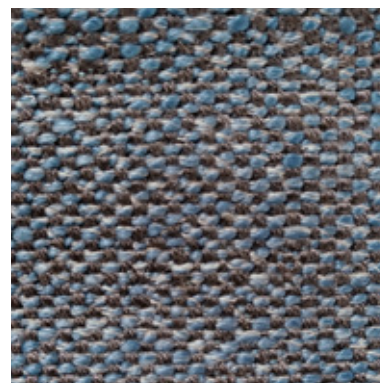
MADERA 364



MADERA 551



MADERA 571



MACRO 572



MACRO 573



MACRO 575

INFORMAZIONI TECNICHE / TECHNICAL INFORMATION

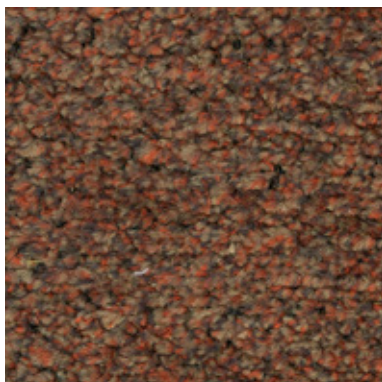
Composizione / composition	28% CO - 26%VI - 25% PC - 16% LI - 5% PL
Martindale / martindale	25.000 cicli/cycles
Pilling / Pilling	4

MANUTENZIONE / MAINTENANCE



CAT. L

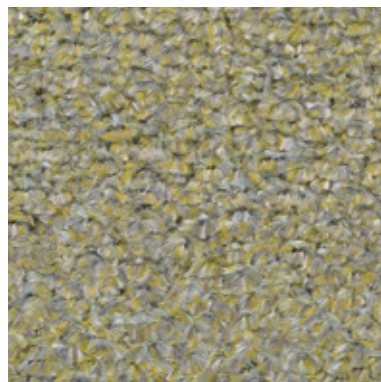
Lolita



LOLITA 105



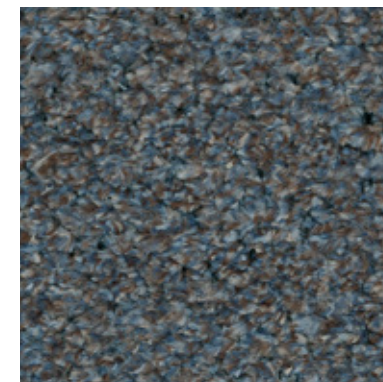
LOLITA 125



LOLITA 129



LOLITA 131



LOLITA 133



LOLITA 134



LOLITA 153

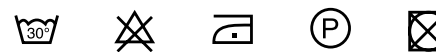


LOLITA 159

INFORMAZIONI TECNICHE / TECHNICAL INFORMATION

Composizione / composition	100% PL
Martindale / martindale	40.000 cicli/cycles
Pilling / Pilling	4

MANUTENZIONE / MAINTENANCE



CAT. L

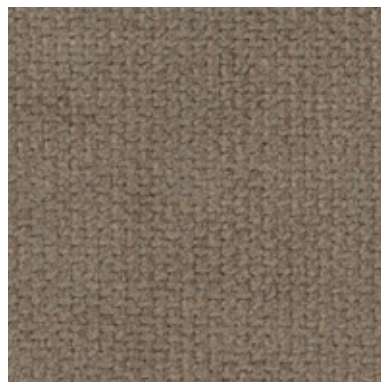
Logan



LOGAN 001



LOGAN 002



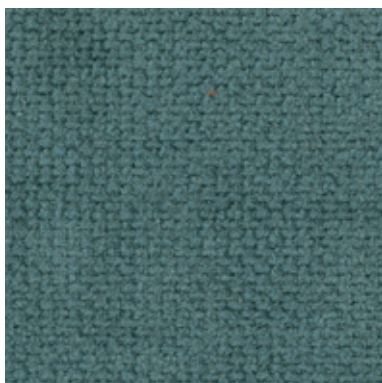
LOGAN 004



LOGAN 006



LOGAN 011



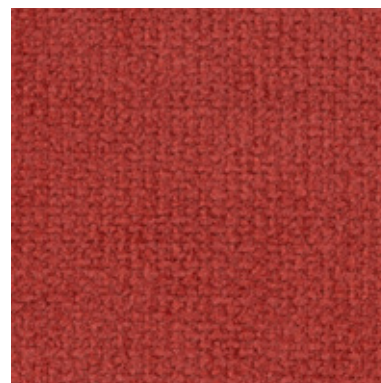
LOGAN 012



LOGAN 014



LOGAN 015



LOGAN 019

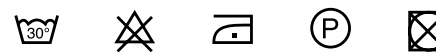


LOGAN 020

INFORMAZIONI TECNICHE / TECHNICAL INFORMATION

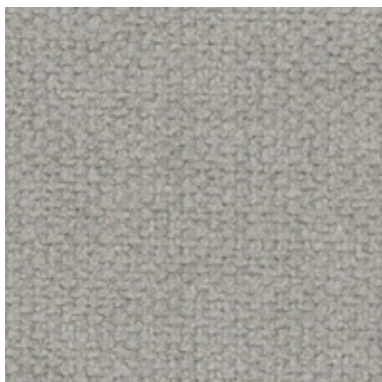
Composizione / composition	100% PL
Martindale / martindale	100.000 cicli/cycles
Pilling / Pilling	5

MANUTENZIONE / MAINTENANCE

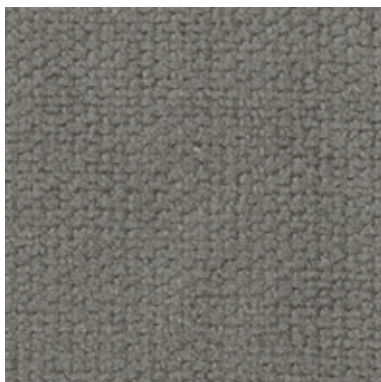


CAT. L

Logan



LOGAN 021



LOGAN 022



LOGAN 025



LOGAN 026

INFORMAZIONI TECNICHE / TECHNICAL INFORMATION

Composizione / composition	100% PL
Martindale / martindale	100.000 cicli/cycles
Pilling / Pilling	5

MANUTENZIONE / MAINTENANCE



CAT. L

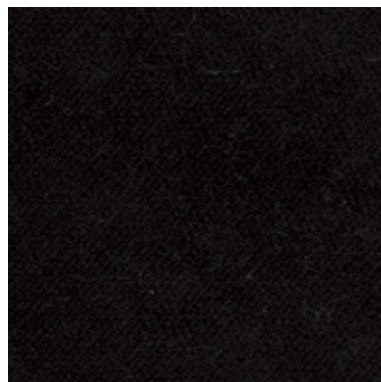
Like



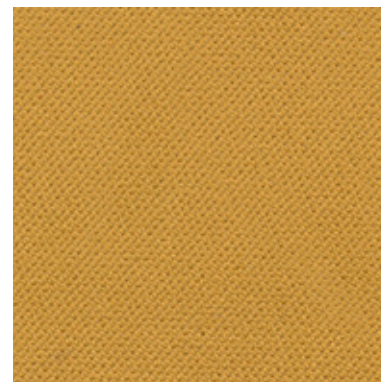
LIKE 002



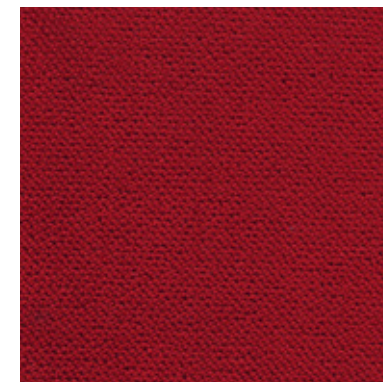
LIKE 111



LIKE 200



LIKE 301



LIKE 303



LIKE 304



LIKE 307



LIKE 402




LIKE 404





LIKE 405

INFORMAZIONI TECNICHE / TECHNICAL INFORMATION

Composizione / composition	100% PL
Martindale / martindale	100.000 cicli/cycles
Pilling / Pilling	4

 **anallergico**
hypoallergenic

 **irrestringibile**
non-shrink

 **antimacchia**
stain resistant

MANUTENZIONE / MAINTENANCE

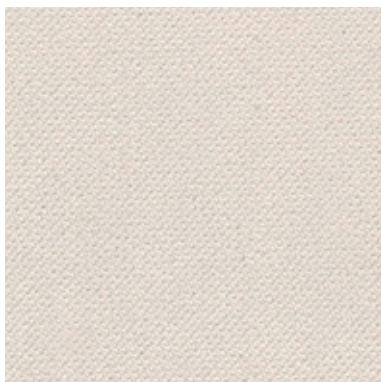


CAT. L

Like



LIKE 408



LIKE 600



LIKE 601



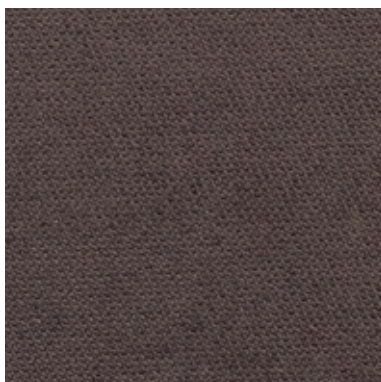
LIKE 602



LIKE 603



LIKE 604



LIKE 605



LIKE 700




LIKE 702





LIKE 704

INFORMAZIONI TECNICHE / TECHNICAL INFORMATION

Composizione / composition	100% PL
Martindale / martindale	100.000 cicli/cycles
Pilling / Pilling	4

 **anallergico**
hypoallergenic

 **irrestringibile**
non-shrink

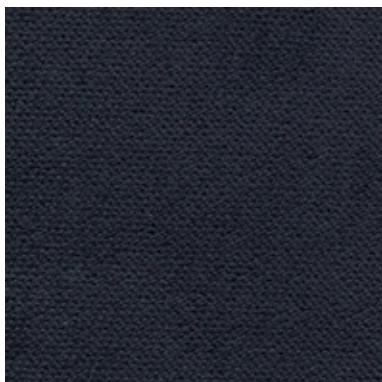
 **antimacchia**
stain resistant

MANUTENZIONE / MAINTENANCE

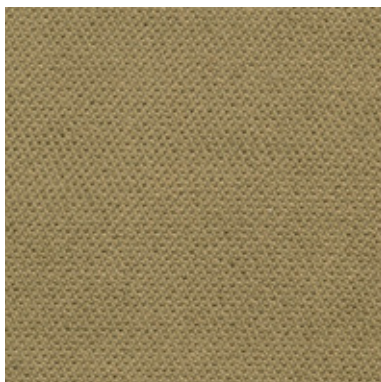


CAT. L

Like



LIKE 705




LIKE 801





LIKE 804

INFORMAZIONI TECNICHE / TECHNICAL INFORMATION

Composizione / composition	100% PL
Martindale / martindale	100.000 cicli/cycles
Pilling / Pilling	4

 **anallergico**
hypoallergenic

 **irrestringibile**
non-shrink

 **antimacchia**
stain resistant

MANUTENZIONE / MAINTENANCE



CAT. L

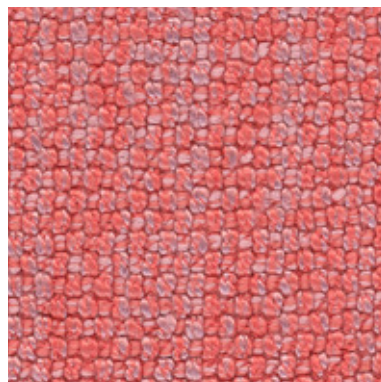
Lewis



LEWIS 102



LEWIS 201



LEWIS 315



LEWIS 400



LEWIS 403



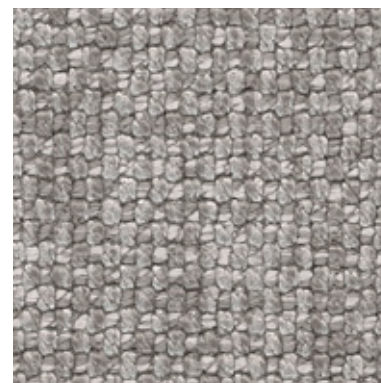
LEWIS 405



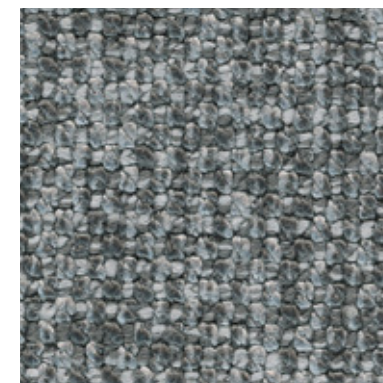
LEWIS 411



LEWIS 503



LEWIS 600



LEWIS 601

INFORMAZIONI TECNICHE / TECHNICAL INFORMATION

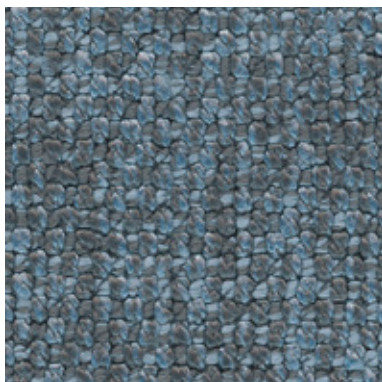
Composizione / composition	57% PL - 43% VI
Martindale / martindale	100.000 cicli/cycles
Pilling / Pilling	4

MANUTENZIONE / MAINTENANCE

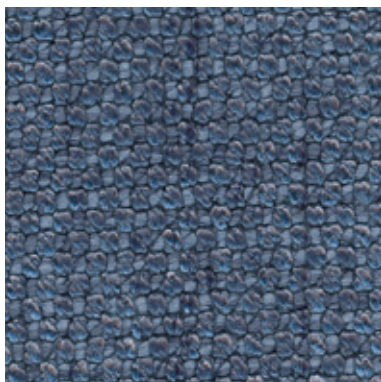


CAT. L

Lewis



LEWIS 705



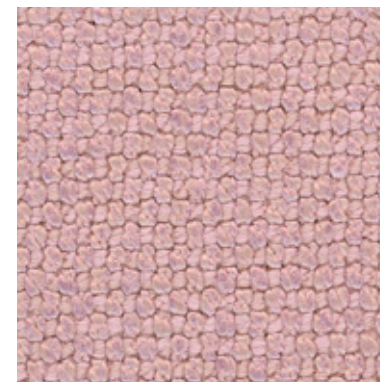
LEWIS 714



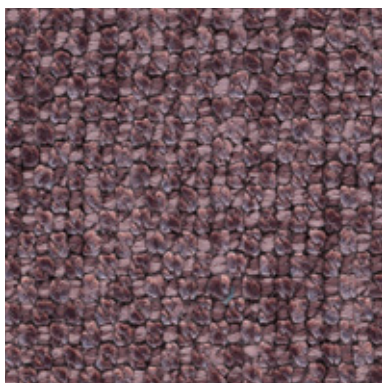
LEWIS 800



LEWIS 802



LEWIS 900



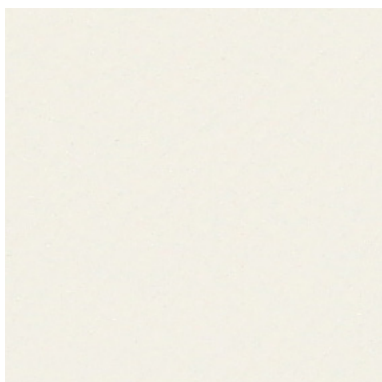
LEWIS 905

INFORMAZIONI TECNICHE / TECHNICAL INFORMATION

Composizione / composition	57% PL - 43% VI
Martindale / martindale	100.000 cicli/cycles
Pilling / Pilling	4

MANUTENZIONE / MAINTENANCE





EVEREST 002



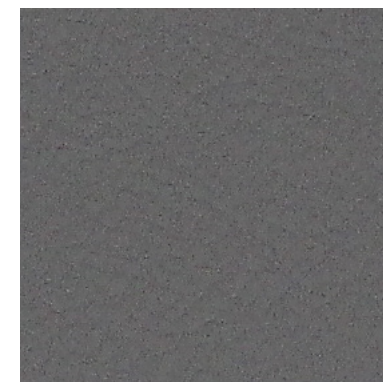
EVEREST 004



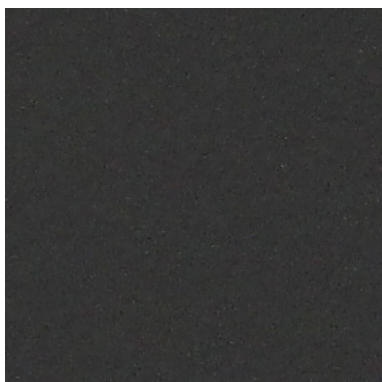
EVEREST 005



EVEREST 006



EVEREST 007



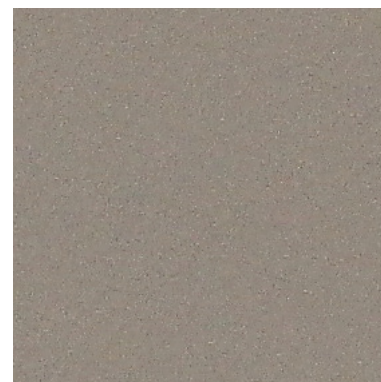
EVEREST 008



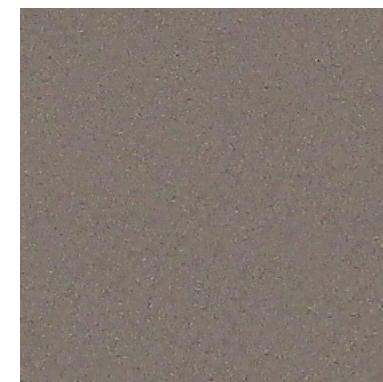
EVEREST 009



EVEREST 011



EVEREST 014

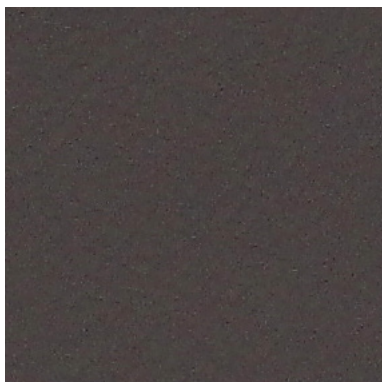


EVEREST 015

INFORMAZIONI TECNICHE / TECHNICAL INFORMATION

Composizione / composition	85% PVC - 15% PU
Martindale / martindale	50.000 cicli/cycles
Pilling / Pilling	-

MANUTENZIONE / MAINTENANCE



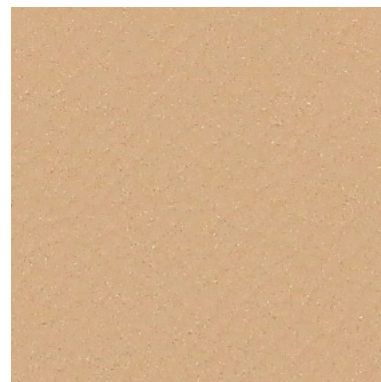
EVEREST 016



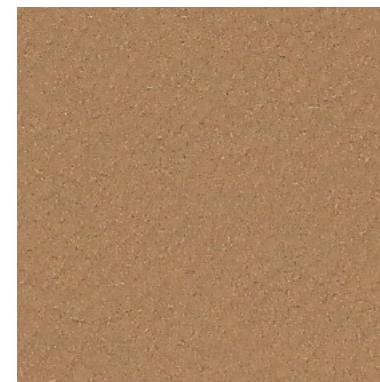
EVEREST 017



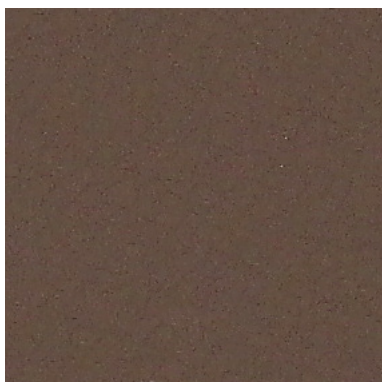
EVEREST 026



EVEREST 029



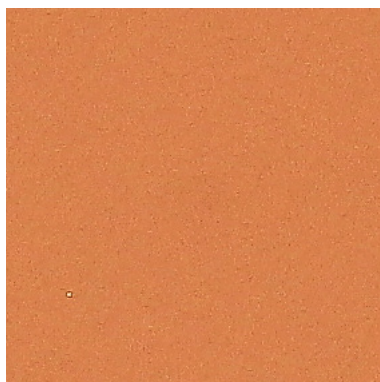
EVEREST 030



EVEREST 031



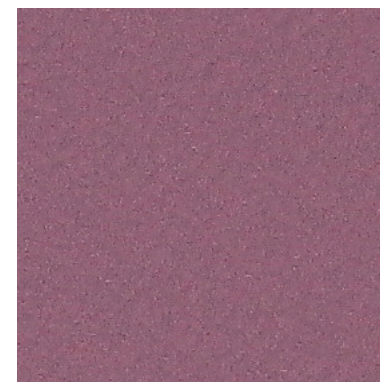
EVEREST 035



EVEREST 037



EVEREST 040



EVEREST 043

INFORMAZIONI TECNICHE / TECHNICAL INFORMATION

Composizione / composition	85% PVC - 15% PU
Martindale / martindale	50.000 cicli/cycles
Pilling / Pilling	-

MANUTENZIONE / MAINTENANCE

SIMILPELLE CAT. E

Everest



EVEREST 045



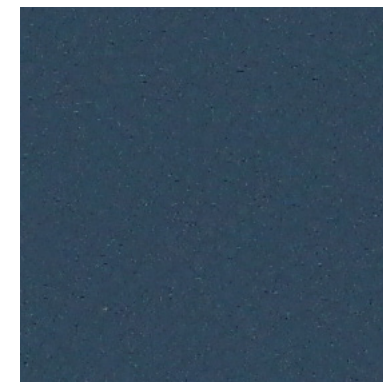
EVEREST 046



EVEREST 048



EVEREST 051

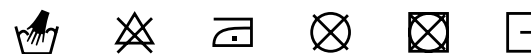


EVEREST 055

INFORMAZIONI TECNICHE / TECHNICAL INFORMATION

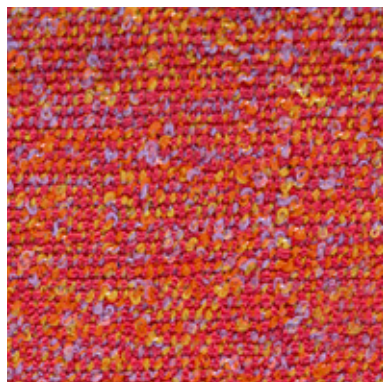
Composizione / composition	85% PVC - 15% PU
Martindale / martindale	50.000 cicli/cycles
Pilling / Pilling	-

MANUTENZIONE / MAINTENANCE

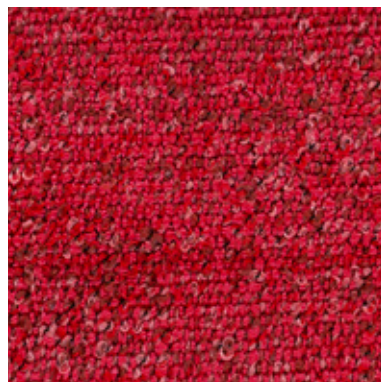




EVERGREEN 101



EVERGREEN 304



EVERGREEN 305



EVERGREEN 400



EVERGREEN 600



EVERGREEN 603



EVERGREEN 605



EVERGREEN 611



EVERGREEN 701



EVERGREEN 802

INFORMAZIONI TECNICHE / TECHNICAL INFORMATION

Composizione / composition	100% PP
Martindale / martindale	50.000 cicli/cycles
Pilling / Pilling	4

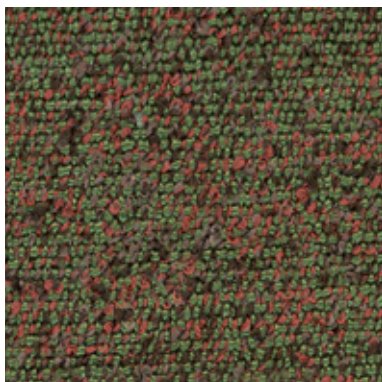


Eco-friendly

anallergico
hypoallergenicirrestringibile
non-shrinkidrorepellente
water repellent

MANUTENZIONE / MAINTENANCE





EVERGREEN 806




EVERGREEN 900


INFORMAZIONI TECNICHE / TECHNICAL INFORMATION

Composizione / composition	100% PP
Martindale / martindale	50.000 cicli/cycles
Pilling / Pilling	4

 **Eco-friendly**

 **anallergico**
hypoallergenic

 **irrestringibile**
non-shrink

 **idrorepellente**
water repellent

MANUTENZIONE / MAINTENANCE



CAT. E

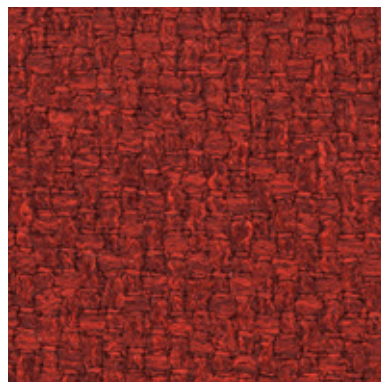
Even



EVEN 003



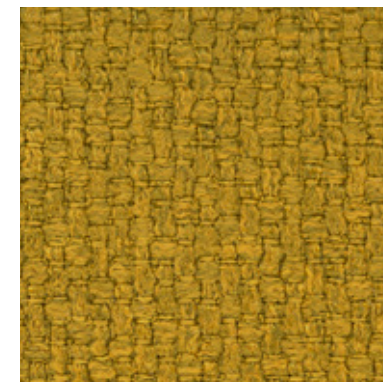
EVEN 111



EVEN 300



EVEN 408



EVEN 503



EVEN 600



EVEN 604



EVEN 608



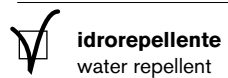
EVEN 609



EVEN 610

INFORMAZIONI TECNICHE / TECHNICAL INFORMATION

Composizione / composition	100% PL
Martindale / martindale	50.000 cicli/cycles
Pilling / Pilling	4



idrorepellente
water repellent

MANUTENZIONE / MAINTENANCE

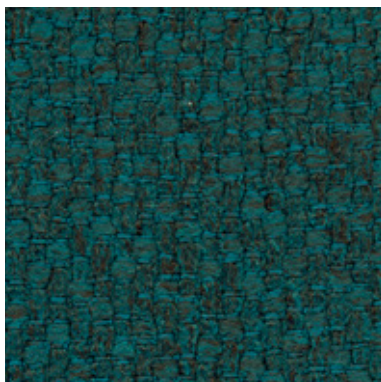


CAT. E

Even



EVEN 705



EVEN 708



EVEN 801



EVEN 901

INFORMAZIONI TECNICHE / TECHNICAL INFORMATION

Composizione / composition	100% PL
Martindale / martindale	50.000 cicli/cycles
Pilling / Pilling	4

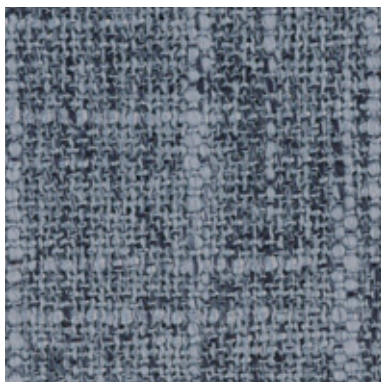
 **idrorepellente**
water repellent

MANUTENZIONE / MAINTENANCE





ERIK 007



ERIK 015



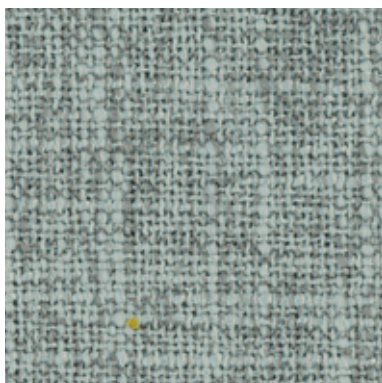
ERIK 018



ERIK 019



ERIK 020



ERIK 021



ERIK 023



ERIK 027



ERIK 130



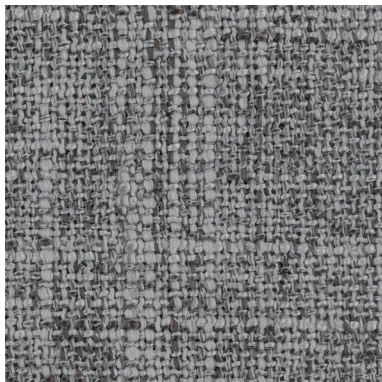
ERIK 001

INFORMAZIONI TECNICHE / TECHNICAL INFORMATION

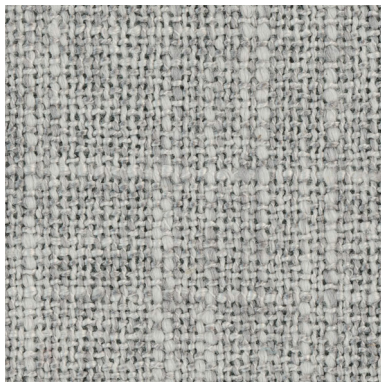
Composizione / composition	100% PL
Martindale / martindale	30.000 cicli/cycles
Pilling / Pilling	4

MANUTENZIONE / MAINTENANCE





ERIK 205



ERIK 616

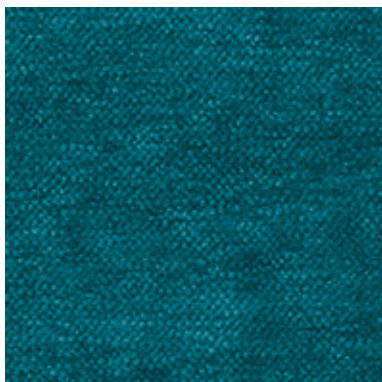
INFORMAZIONI TECNICHE / TECHNICAL INFORMATION

Composizione / composition	100% PL
Martindale / martindale	30.000 cicli/cycles
Pilling / Pilling	4

MANUTENZIONE / MAINTENANCE

CAT. E

Enter



ENTER 006



ENTER 009



ENTER 013



ENTER 020



ENTER 024



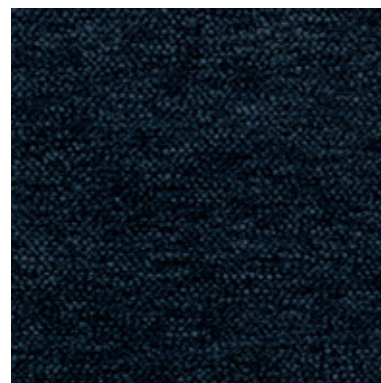
ENTER 025



ENTER 030



ENTER 037



ENTER 041



ENTER 044

INFORMAZIONI TECNICHE / TECHNICAL INFORMATION

Composizione / composition	100% PL
Martindale / martindale	40.000 cicli/cycles
Pilling / Pilling	4

MANUTENZIONE / MAINTENANCE



CAT. E

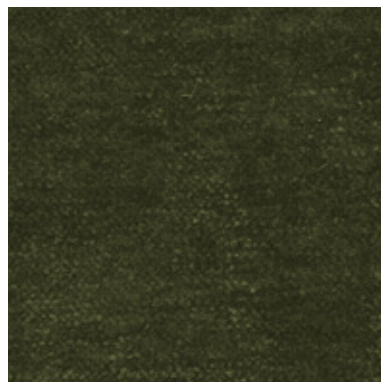
Enter



ENTER 057



ENTER 059



ENTER 062



ENTER 074



ENTER 100



ENTER 101

INFORMAZIONI TECNICHE / TECHNICAL INFORMATION

Composizione / composition	100% PL
Martindale / martindale	40.000 cicli/cycles
Pilling / Pilling	4

MANUTENZIONE / MAINTENANCE



CAT. E

Emery



EMERY 07



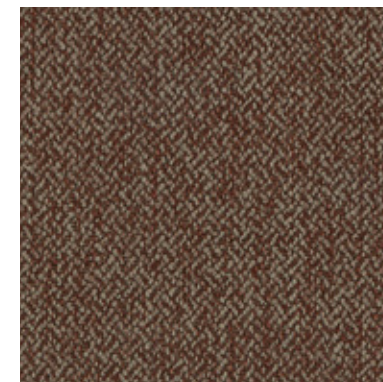
EMERY 21



EMERY 24



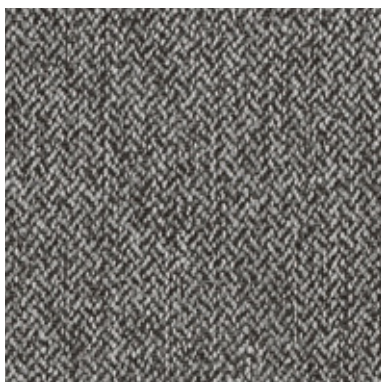
EMERY 25



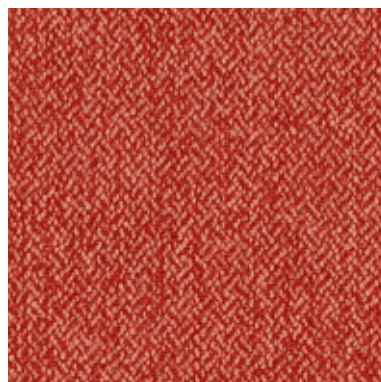
EMERY 30



EMERY 31



EMERY 37



EMERY 44




EMERY 53



EMERY 62

INFORMAZIONI TECNICHE / TECHNICAL INFORMATION

Composizione / composition	100% PL
Martindale / martindale	40.000 cicli/cycles
Pilling / Pilling	4

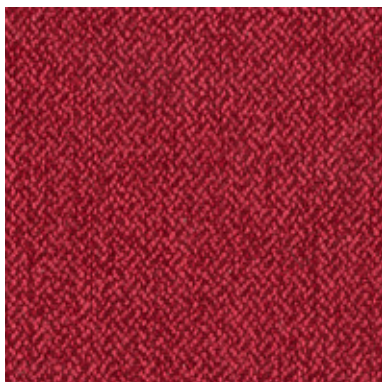
 **idrorepellente**
water repellent

MANUTENZIONE / MAINTENANCE



CAT. E

Emery




EMERY 70



EMERY 74

INFORMAZIONI TECNICHE / TECHNICAL INFORMATION

Composizione / composition	100% PL
Martindale / martindale	40.000 cicli/cycles
Pilling / Pilling	4

 **idrorepellente**
water repellent

MANUTENZIONE / MAINTENANCE



CAT. E

Edward



EDWARD 807



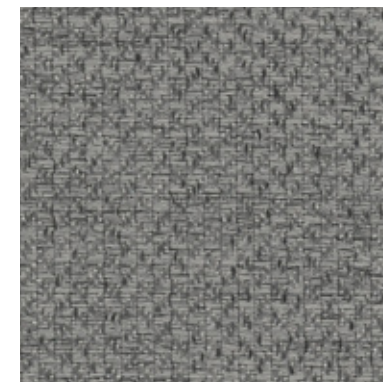
EDWARD 820



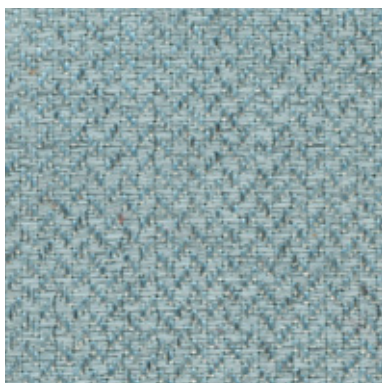
EDWARD 825



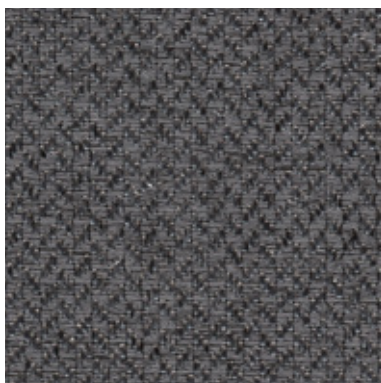
EDWARD 831



EDWARD 832



EDWARD 842




EDWARD 874



EDWARD 884

INFORMAZIONI TECNICHE / TECHNICAL INFORMATION

Composizione / composition	100% PL
Martindale / martindale	30.000 cicli/cycles
Pilling / Pilling	4

 **idrorepellente**
water repellent

MANUTENZIONE / MAINTENANCE

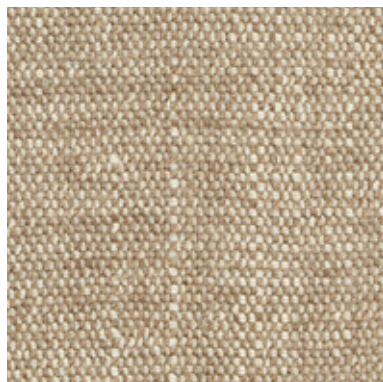


CAT. E

Easy care



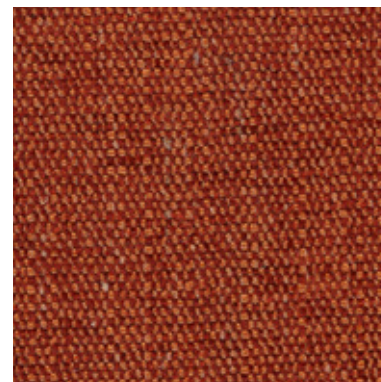
EASY CARE 001



EASY CARE 002



EASY CARE 003



EASY CARE 006



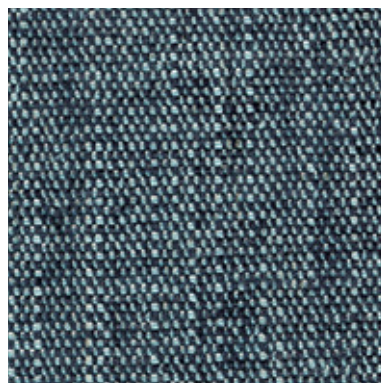
EASY CARE 007



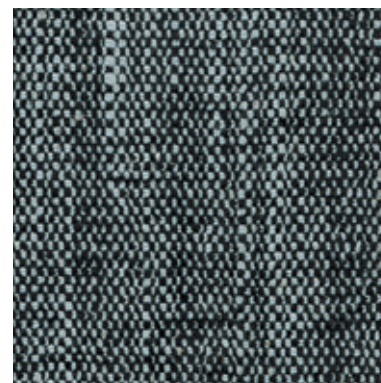
EASY CARE 008



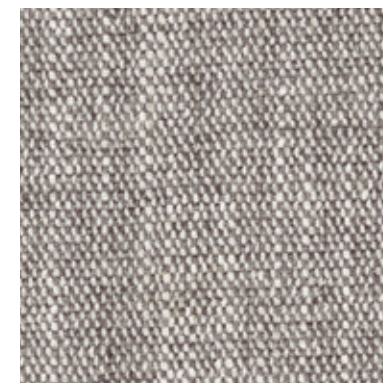
EASY CARE 010



EASY CARE 012



EASY CARE 013




EASY CARE 015

INFORMAZIONI TECNICHE / TECHNICAL INFORMATION

Composizione / composition	70% PL - 30% LI
Martindale / martindale	50.000 cicli/cycles
Pilling / Pilling	5

 **idrorepellente**
water repellent

 **irrestringibile**
non-shrink

 **antimacchia**
stain resistant

MANUTENZIONE / MAINTENANCE



CAT. E

Easy care




EASY CARE 016





EASY CARE 017

INFORMAZIONI TECNICHE / TECHNICAL INFORMATION

Composizione / composition	70% PL - 30% LI
Martindale / martindale	50.000 cicli/cycles
Pilling / Pilling	5

 **idrorepellente**
water repellent

 **irrestringibile**
non-shrink

 **antimacchia**
stain resistant

MANUTENZIONE / MAINTENANCE



CAT. A

After



AFTER 011



AFTER 033



AFTER 043



AFTER 045



AFTER 060



AFTER 061



AFTER 063



AFTER 064




AFTER 076




AFTER 084

INFORMAZIONI TECNICHE / TECHNICAL INFORMATION

Composizione / composition	100% PL
Martindale / martindale	60.000 cicli/cycles
Pilling / Pilling	5

 **idrorepellente**
water repellent

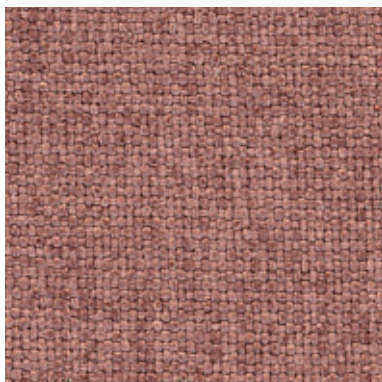
 **irrestringibile**
non-shrink

MANUTENZIONE / MAINTENANCE



CAT. A


After




AFTER 095

INFORMAZIONI TECNICHE / TECHNICAL INFORMATION

Composizione / composition	100% PL
Martindale / martindale	60.000 cicli/cycles
Pilling / Pilling	5

 **idrorepellente**
water repellent

 **irrestringibile**
non-shrink

MANUTENZIONE / MAINTENANCE

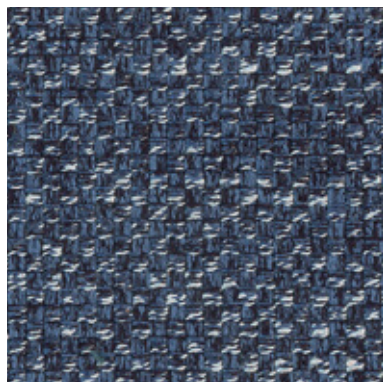


CAT. A

Adria



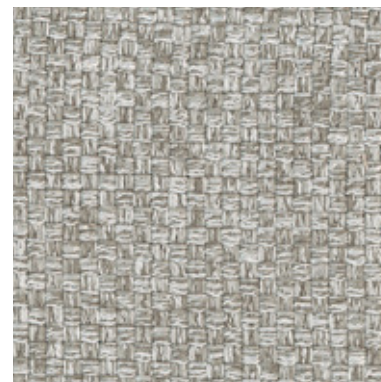
ADRIA 207



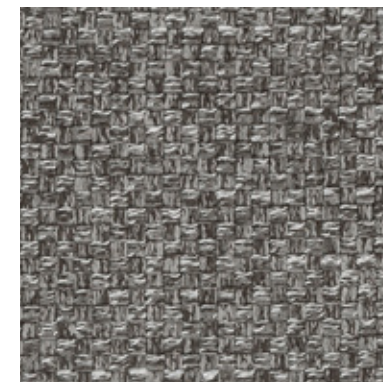
ADRIA 215



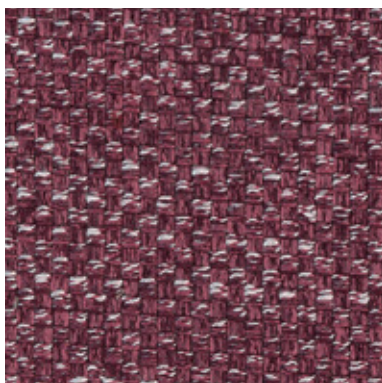
ADRIA 225



ADRIA 231



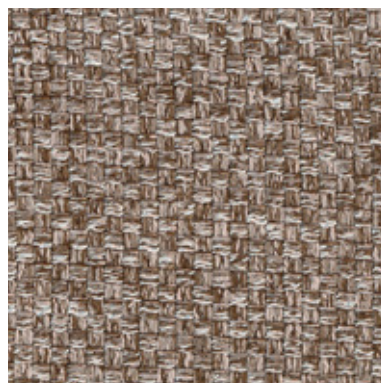
ADRIA 232



ADRIA 245



ADRIA 262




ADRIA 275



ADRIA 284

INFORMAZIONI TECNICHE / TECHNICAL INFORMATION

Composizione / composition	70% PL - 30% VI
Martindale / martindale	30.000 cicli/cycles
Pilling / Pilling	4

 **idrorepellente**
water repellent

MANUTENZIONE / MAINTENANCE



**DITRE
italia**

31016 Cordignano (Treviso) Zona Industriale Via del Lavoro, 21
Tel. +39.0438.9999 Fax +39.0438.999993 www.ditreitalia.it info@ditreitalia.it

Ditre Italia Products

2022

—

Pelle ***Leathers***

DITRE
italia



VOGUE 401



VOGUE 402



VOGUE 403



VOGUE 404



VOGUE 407



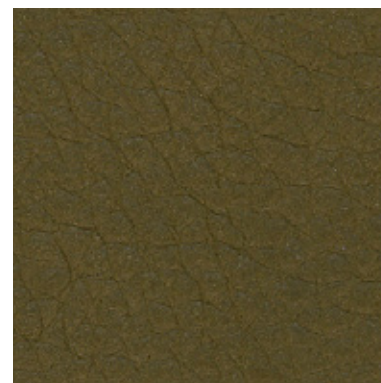
VOGUE 409



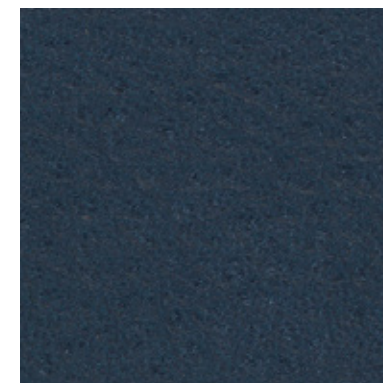
VOGUE 410



VOGUE 412



VOGUE 418



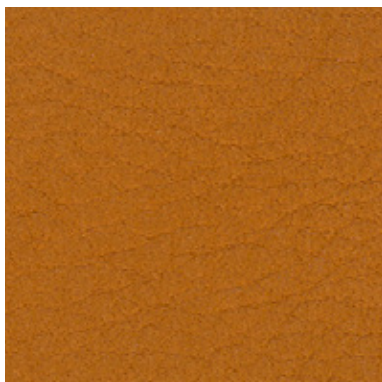
VOGUE 421

INFORMAZIONI TECNICHE / TECHNICAL INFORMATION

Tipologia / Type	pieno fiore/ full grain
Origine / origin	pelli bovine / cowhide
Provenienza / provenance	europa / european
Concia / tanning	sali di cromo / chrome salt
Tintura / dye	anilina passante in botte sottovuoto /aniline drum dyeing
Spessore / thickness	1,3/1,5 mm

TEST FISICI / PHYSICAL TESTS

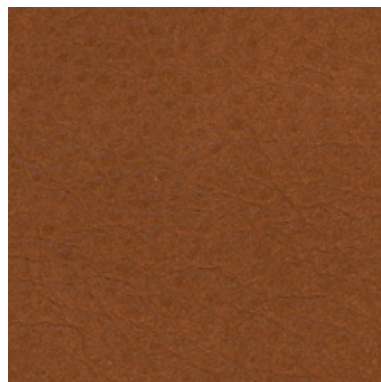
solidità del colore alla luce: >2/3 scala blu	colour light fastness : >2/3 blu scale
solidità del colore allo strofinio a secco 50 cicli:	colour fastness to the 50 dry-rubbing: >3 grey scale
>3 scala grigi	colour fastness to the 20 wet-rubbing: >2/3 grey scale
solidità del colore allo strofinio a umido 20 cicli:	
>2/3 scala grigi	



VOGUE 422



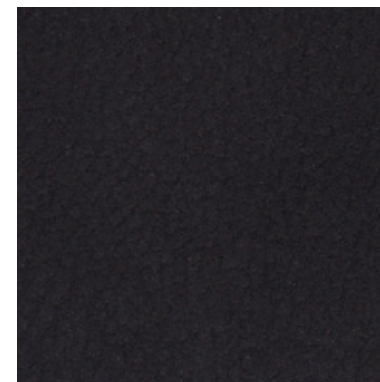
VOGUE 423



VOGUE 424



VOGUE 425



VOGUE 426

INFORMAZIONI TECNICHE / TECHNICAL INFORMATION

Tipologia / Type	pieno fiore/ full grain
Origine / origin	pelli bovine / cowhide
Provenienza / provenance	europa / european
Concia / tanning	sali di cromo / chrome salt
Tintura / dye	anilina passante in botte sottovuoto /aniline drum dyeing
Spessore / thickness	1,3/1,5 mm

TEST FISICI / PHYSICAL TESTS

solidità del colore alla luce: >2/3 scala blu	colour light fastness : >2/3 blu scale
solidità del colore allo strofinio a secco 50 cicli:	colour fastness to the 50 dry-rubbing: >3 grey scale
>3 scala grigi	colour fastness to the 20 wet-rubbing: >2/3 grey scale
solidità del colore allo strofinio a umido 20 cicli:	
>2/3 scala grigi	



VENICE 001



VENICE 002



VENICE 003



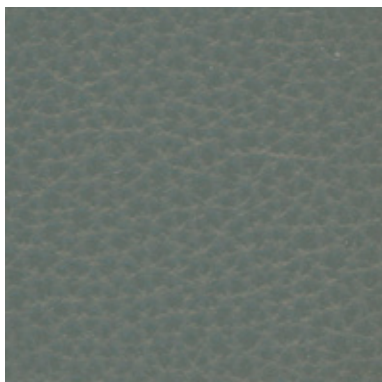
VENICE 004

INFORMAZIONI TECNICHE / TECHNICAL INFORMATION

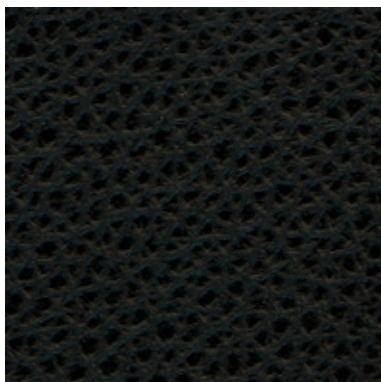
Tipologia / Type	pieno fiore/ full grain
Origine / origin	pelli bovine / cowhide
Provenienza / provenance	europea / european
Concia / tanning	sali di cromo / chrome salt
Tintura / dye	all'anilina passante in botte sotto vuoto / aniline through
Spessore / thickness	0,9/1,1 mm

TEST FISICI / PHYSICAL TESTS

solidità del colore alla luce: 4/5	colour light fastness : 4/5
solidità del colore allo strofinio a secco: 500 cicli	colour fastness to the dry-rubbing: 500 cycles
solidità del colore allo strofinio a umido: 80 cicli	colour fastness to the wet-rubbing: 80 cycles



POLAR 204



POLAR 207



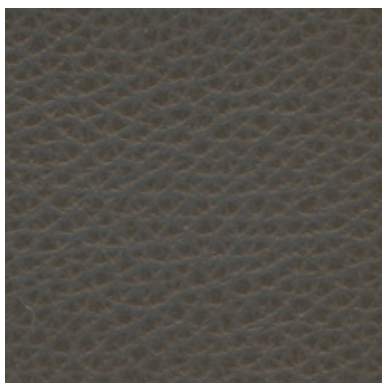
POLAR 208



POLAR 209



POLAR 210



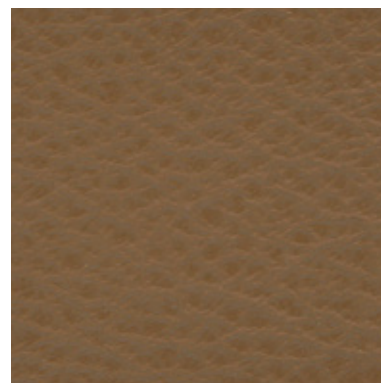
POLAR 211



POLAR 212



POLAR 214



POLAR 216



POLAR 217

INFORMAZIONI TECNICHE / TECHNICAL INFORMATION

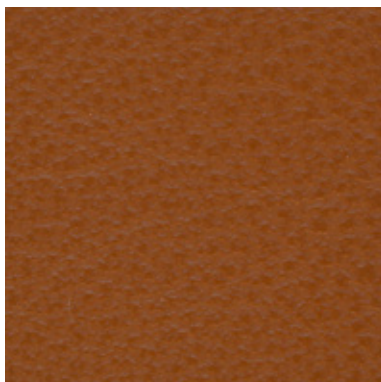
Tipologia / Type	fiore corretto/ full grain
Origine / origin	pelli bovine / cowhide
Provenienza / provenance	mondiale / worldwide
Concia / tanning	sali di cromo / chrome salt
Tintura / dye	in botte passante / in barrels
Spessore / thickness	1,2/1,4 mm

TEST FISICI / PHYSICAL TESTS

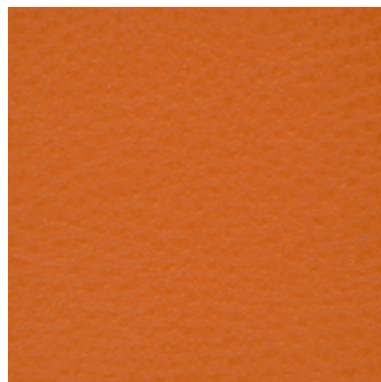
solidità del colore alla luce: 5	colour light fastness : 5
solidità del colore allo strofinio a secco 500 cicli: >4	colour fastness to the dry-rubbing 500 cycles: >4
solidità del colore allo strofinio a umido 250 cicli: >4	colour fastness to the wet-rubbing 250 cycles: >4
solidità alla flessione 50.000 cicli: nessun danno	fastness to the bending 50.000: cycles no damage



POLAR 218



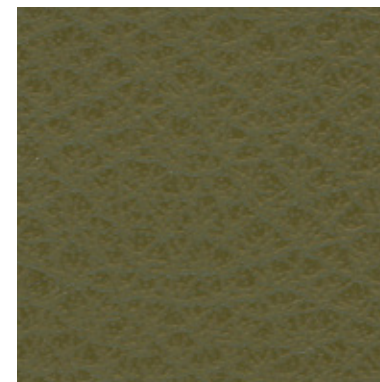
POLAR 223



POLAR 246



POLAR 251



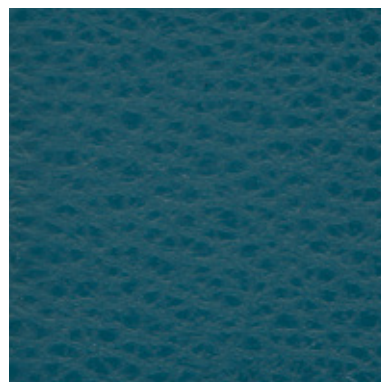
POLAR 257



POLAR 264



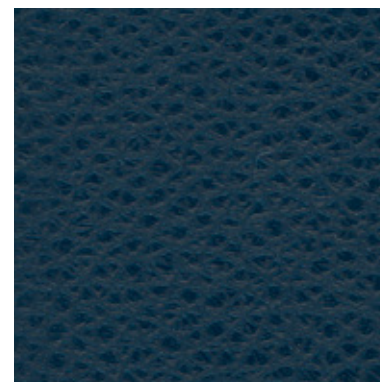
POLAR 266



POLAR 270



POLAR 271



POLAR 275

INFORMAZIONI TECNICHE / TECHNICAL INFORMATION

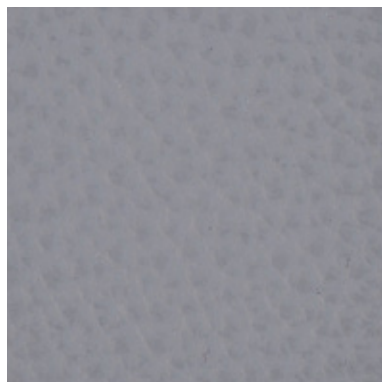
Tipologia / Type	fiore corretto/ full grain
Origine / origin	pelli bovine / cowhide
Provenienza / provenance	mondiale / worldwide
Concia / tanning	sali di cromo / chrome salt
Tintura / dye	in botte passante / in barrels
Spessore / thickness	1,2/1,4 mm

TEST FISICI / PHYSICAL TESTS

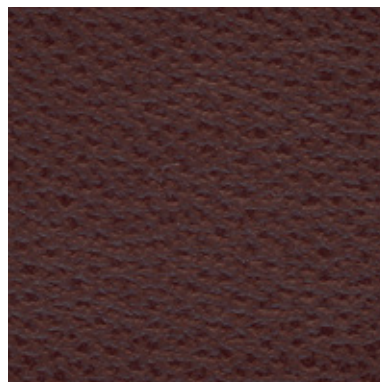
solidità del colore alla luce: 5	colour light fastness : 5
solidità del colore allo strofinio a secco 500 cicli: >4	colour fastness to the dry-rubbing 500 cycles: >4
solidità del colore allo strofinio a umido 250 cicli: >4	colour fastness to the wet-rubbing 250 cycles: >4
solidità alla flessione 50.000 cicli: nessun danno	fastness to the bending 50.000: cycles no damage



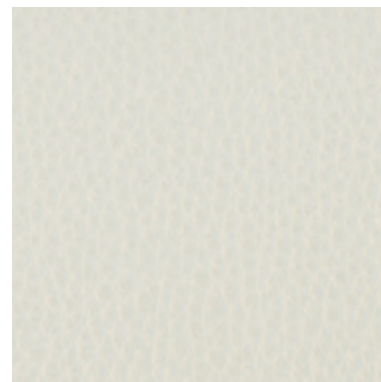
POLAR 277



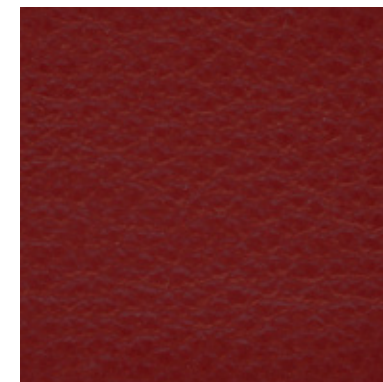
POLAR 281



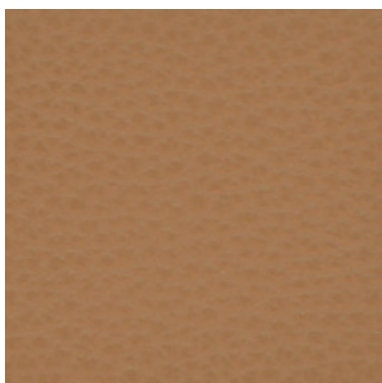
POLAR 284



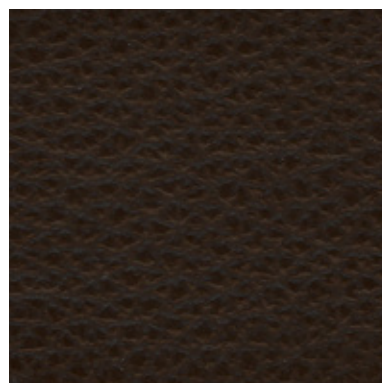
POLAR 286



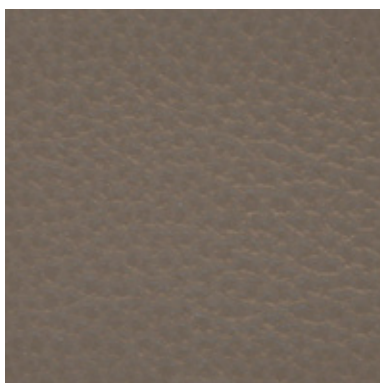
POLAR 288



POLAR 295



POLAR 298



POLAR 304



POLAR 398



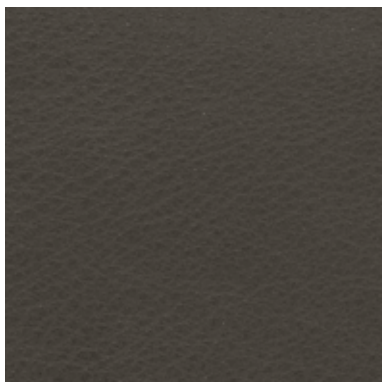
POLAR 399

INFORMAZIONI TECNICHE / TECHNICAL INFORMATION

Tipologia / Type	fiore corretto/ full grain
Origine / origin	pelli bovine / cowhide
Provenienza / provenance	mondiale / worldwide
Concia / tanning	sali di cromo / chrome salt
Tintura / dye	in botte passante / in barrels
Spessore / thickness	1,2/1,4 mm

TEST FISICI / PHYSICAL TESTS

solidità del colore alla luce: 5	colour light fastness : 5
solidità del colore allo strofinio a secco 500 cicli: >4	colour fastness to the dry-rubbing 500 cycles: >4
solidità del colore allo strofinio a umido 250 cicli: >4	colour fastness to the wet-rubbing 250 cycles: >4
solidità alla flessione 50.000 cicli: nessun danno	fastness to the bending 50.000: cycles no damage



PISA 001



PISA 002



PISA 003



PISA 004

INFORMAZIONI TECNICHE / TECHNICAL INFORMATION

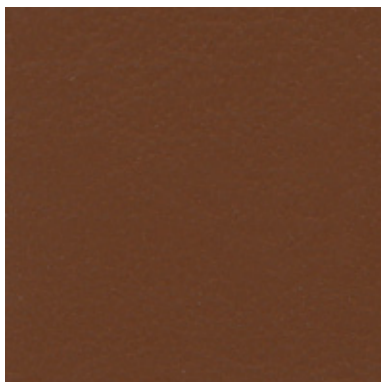
Tipologia / Type	pieno fiore / full grain
Origine / origin	pelli bovine / cowhide
Provenienza / provenance	europea / european
Concia / tanning	sali di cromo / chrome salt
Tintura / dye	in botte con anilina / in barrels
Spessore / thickness	1,0/1,2 mm

TEST FISICI / PHYSICAL TESTS

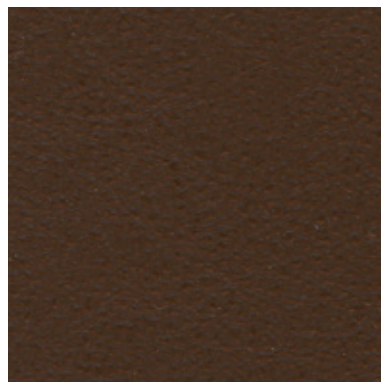
solidità del colore alla luce: 3	colour light fastness : 3
solidità del colore allo strofinio a secco: 50 cicli	colour fastness to the dry-rubbing: 50 cycles
solidità del colore allo strofinio a umido: 20 cicli	colour fastness to the wet-rubbing: 20 cycles



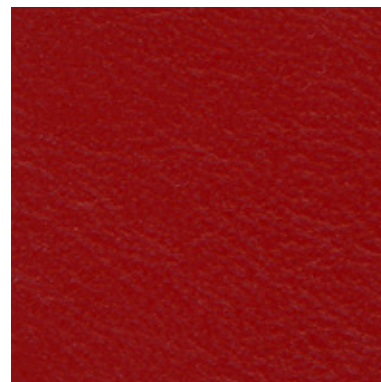
LISBONA 202



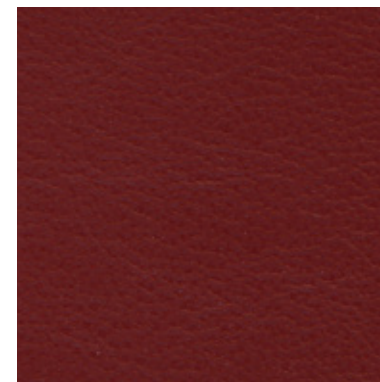
LISBONA 203



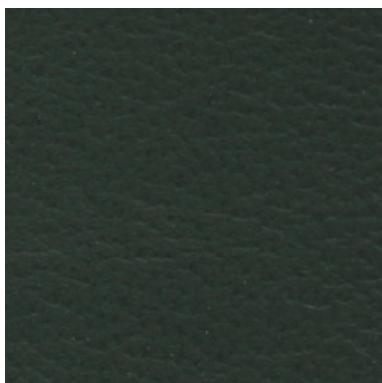
LISBONA 204



LISBONA 209



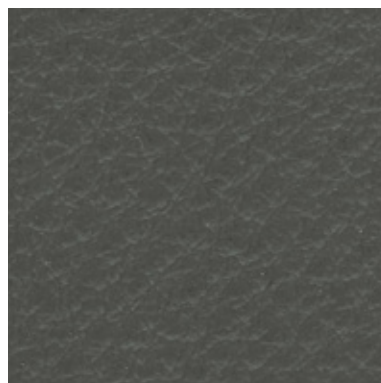
LISBONA 210



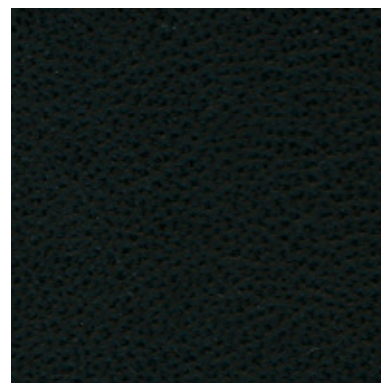
LISBONA 213



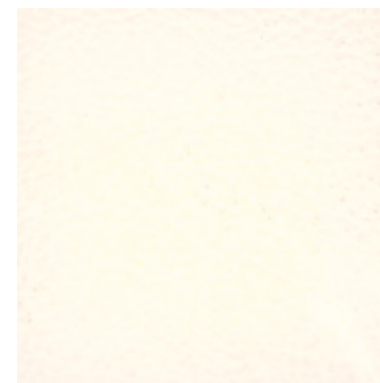
LISBONA 216



LISBONA 218



LISBONA 220



LISBONA 225

INFORMAZIONI TECNICHE / TECHNICAL INFORMATION

Tipologia / Type	fiore corretto/ full grain
Origine / origin	pelli bovine / cowhide
Provenienza / provenance	europea / european
Concia / tanning	sali di cromo / chrome salt
Tintura / dye	all'anilina / aniline dyed
Spessore / thickness	0,9/1 mm

TEST FISICI / PHYSICAL TESTS

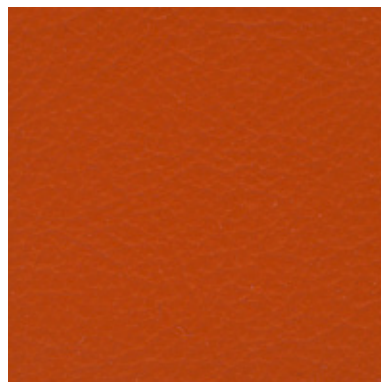
solidità del colore alla luce: > 7	colour light fastness : > 7
solidità del colore allo strofinio a secco 500 cicli: >4/5	colour fastness to the dry-rubbing 500 cycles: >4/5
solidità del colore allo strofinio a umido 250 cicli: >4/5	colour fastness to the wet-rubbing 250 cycles: >4/5
solidità alla flessione >50.000 cicli	fastness to the bending >50.000 cycles



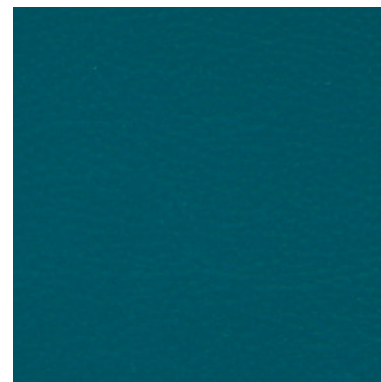
LISBONA 229



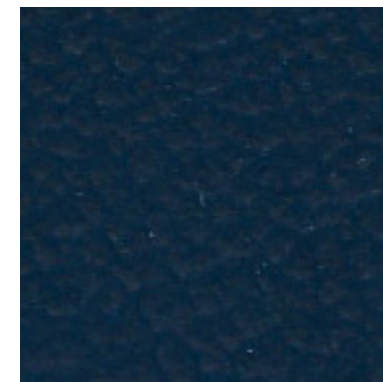
LISBONA 232



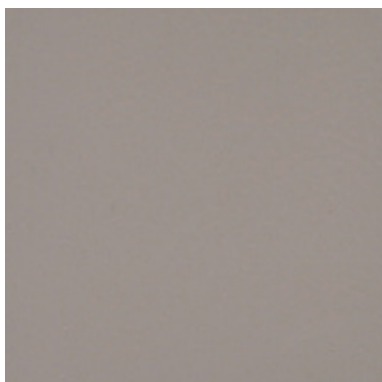
LISBONA 233



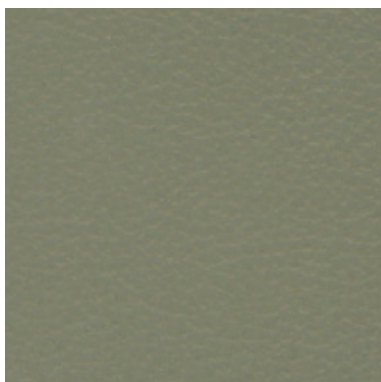
LISBONA 238



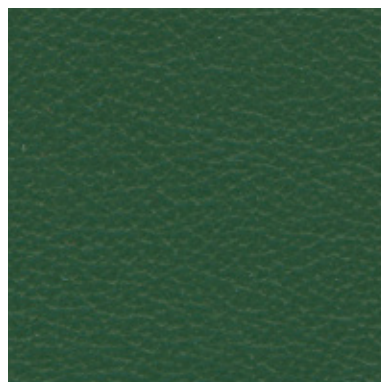
LISBONA 239



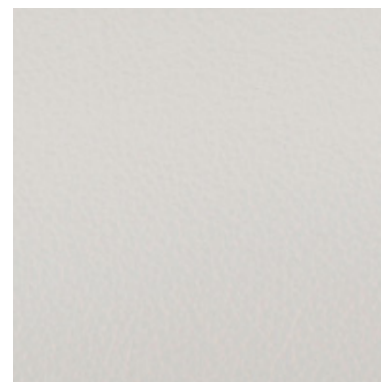
LISBONA 240



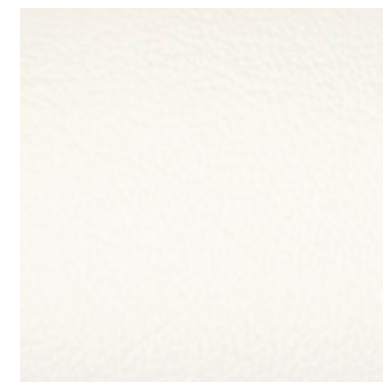
LISBONA 241



LISBONA 242



LISBONA 249



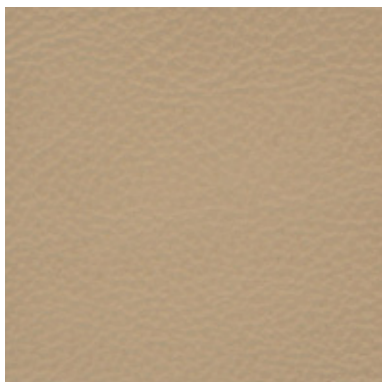
LISBONA 259

INFORMAZIONI TECNICHE / TECHNICAL INFORMATION

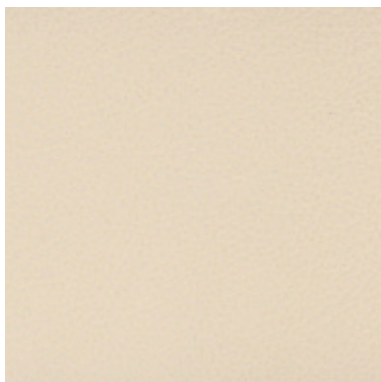
Tipologia / Type	fiore corretto/ full grain
Origine / origin	pelli bovine / cowhide
Provenienza / provenance	europea / european
Concia / tanning	sali di cromo / chrome salt
Tintura / dye	all'anilina / aniline dyed
Spessore / thickness	0,9/1 mm

TEST FISICI / PHYSICAL TESTS

solidità del colore alla luce: > 7	colour light fastness : > 7
solidità del colore allo strofinio a secco 500 cicli: >4/5	colour fastness to the dry-rubbing 500 cycles: >4/5
solidità del colore allo strofinio a umido 250 cicli: >4/5	colour fastness to the wet-rubbing 250 cycles: >4/5
solidità alla flessione >50.000 cicli	fastness to the bending >50.000 cycles



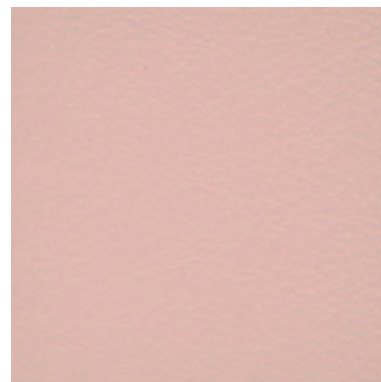
LISBONA 266



LISBONA 267



LISBONA 268



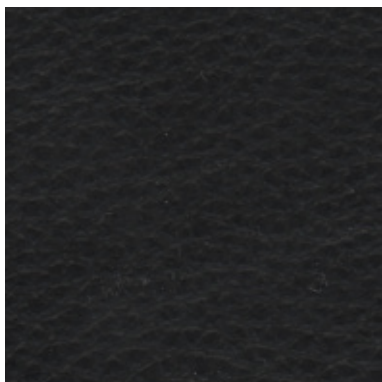
LISBONA 278

INFORMAZIONI TECNICHE / TECHNICAL INFORMATION

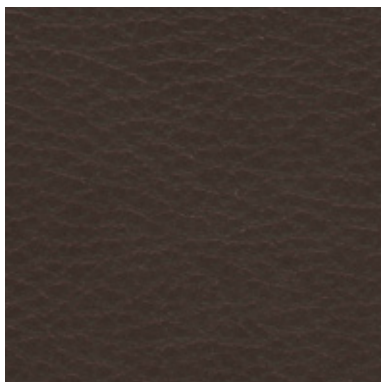
Tipologia / Type	fiore corretto/ full grain
Origine / origin	pelli bovine / cowhide
Provenienza / provenance	europea / european
Concia / tanning	sali di cromo / chrome salt
Tintura / dye	all'anilina / aniline dyed
Spessore / thickness	0,9/1 mm

TEST FISICI / PHYSICAL TESTS

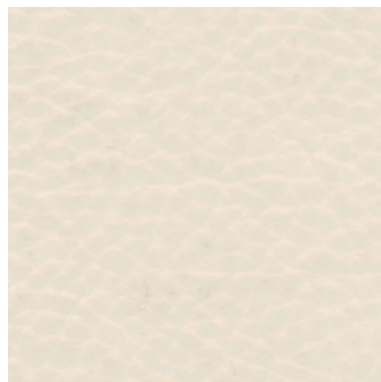
solidità del colore alla luce: > 7	colour light fastness : > 7
solidità del colore allo strofinio a secco 500 cicli: >4/5	colour fastness to the dry-rubbing 500 cycles: >4/5
solidità del colore allo strofinio a umido 250 cicli: >4/5	colour fastness to the wet-rubbing 250 cycles: >4/5
solidità alla flessione >50.000 cicli	fastness to the bending >50.000 cycles



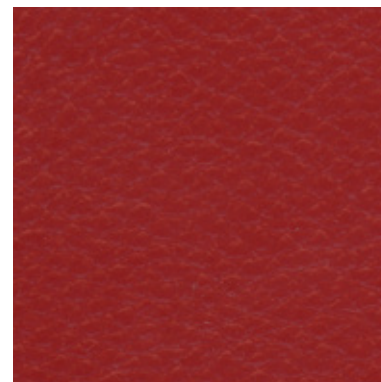
TORONTO 101



TORONTO 102



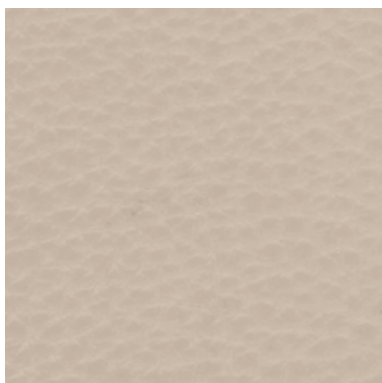
TORONTO 103



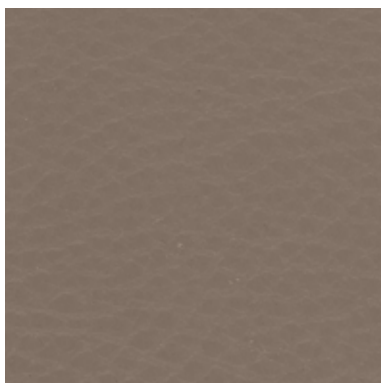
TORONTO 105



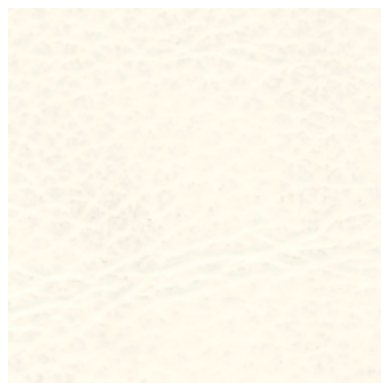
TORONTO 108



TORONTO 109



TORONTO 112



TORONTO 113



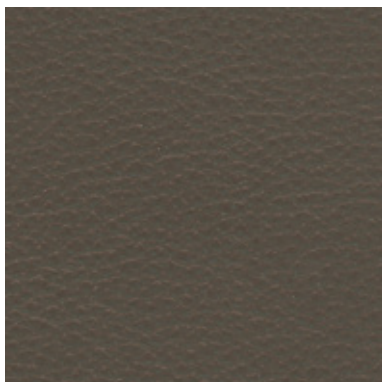
TORONTO 200

INFORMAZIONI TECNICHE / TECHNICAL INFORMATION

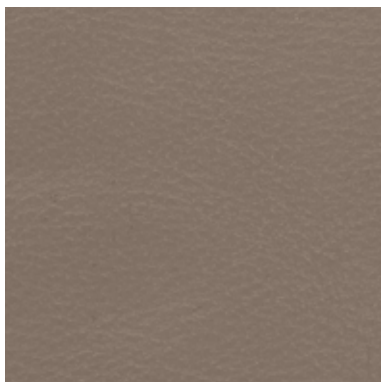
Tipologia / Type	fiore corretto/ full grain
Origine / origin	pelli bovine / cowhide
Provenienza / provenance	mondiale / worldwide
Concia / tanning	sali di cromo / chrome salt
Tintura / dye	in botte passante / in barrels
Spessore / thickness	1,3/1,5 mm

TEST FISICI / PHYSICAL TESTS

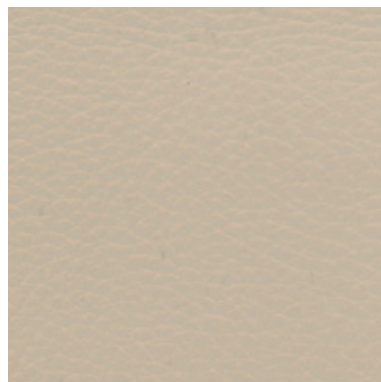
solidità del colore alla luce: 4/5 su 5	colour light fastness : 4/5 out of 5
solidità del colore allo strofinio a secco 500 cicli	colour fastness to the dry-rubbing 500 cycles
solidità del colore allo strofinio a umido 250 cicli	colour fastness to the wet-rubbing 250 cycles
solidità alla flessione 50.000 cicli	fastness to the bending 50.000 cycles



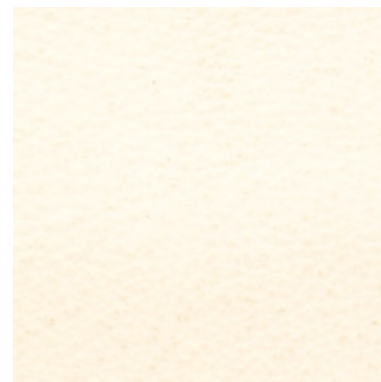
TOKIO 401



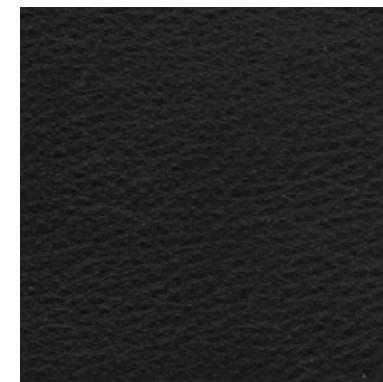
TOKIO 404



TOKIO 406



TOKIO 409



TOKIO 451



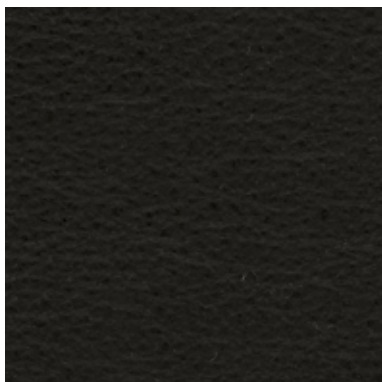
TOKIO 500

INFORMAZIONI TECNICHE / TECHNICAL INFORMATION

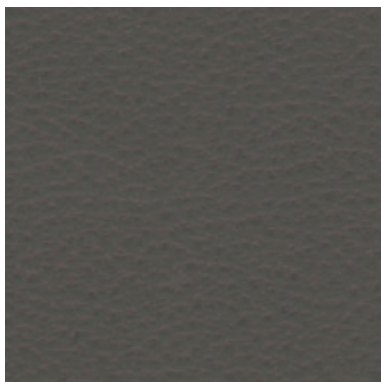
Tipologia / Type	fiore corretto / half grain
Origine / origin	pelli bovine / cowhide
Provenienza / provenance	mondiale / worldwide
Concia / tanning	sali di cromo / chrome salt
Tintura / dye	in botte passante / in barrels
Spessore / thickness	1,2/1,3 mm

TEST FISICI / PHYSICAL TESTS

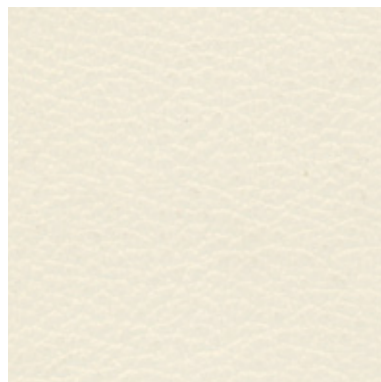
solidità del colore alla luce: 5	colour light fastness : 5
solidità del colore allo strofinio a secco: 500 cicli	colour fastness to the dry-rubbing: 500 cycles
solidità del colore allo strofinio a umido: 250 cicli	colour fastness to the wet-rubbing: 250 cycles



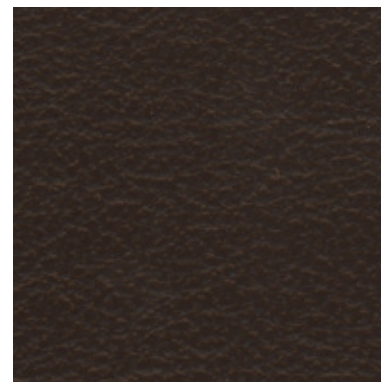
SIDNEY 80



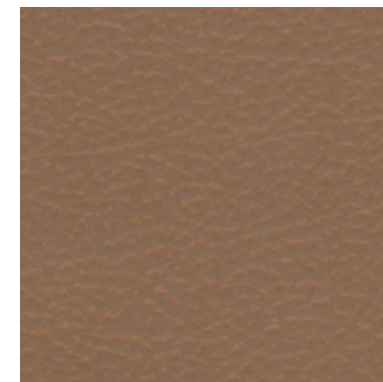
SIDNEY 201



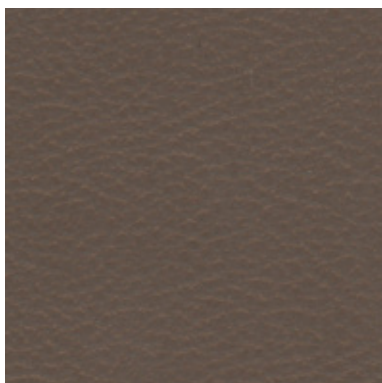
SIDNEY 415



SIDNEY 696



SIDNEY 700



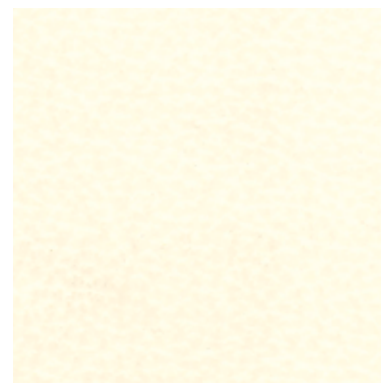
SIDNEY 701



SIDNEY 702



SIDNEY 817



SIDNEY 2000

INFORMAZIONI TECNICHE / TECHNICAL INFORMATION

Tipologia / Type	mezzo fiore/ half grain
Origine / origin	pelli bovine / cowhide
Provenienza / provenance	mondiale / worldwide
Concia / tanning	sali di cromo / chrome salt
Tintura / dye	in botte passante / in barrels
Spessore / thickness	0,9/1,1 mm

TEST FISICI / PHYSICAL TESTS

solidità del colore alla luce: 4/5 su 5	colour light fastness : 4/5 out of 5
solidità del colore allo strofinio a secco: 500 cicli	colour fastness to the dry-rubbing: 500 cycles
solidità del colore allo strofinio a umido: 250 cicli	colour fastness to the wet-rubbing: 250 cycles
solidità alla flessione: 50.000 cicli	fastness to the bending: 50.000

**DITRE
italia**

31016 Cordignano (Treviso) Zona Industriale Via del Lavoro, 21
Tel. +39.0438.9999 Fax +39.0438.999993 www.ditreitalia.it info@ditreitalia.it