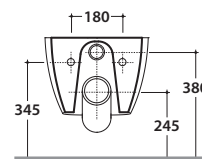
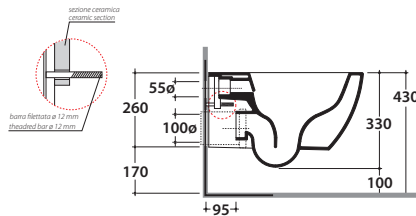
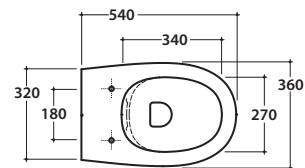


# 4ALL WALL-HUNG WC NO RIM MDS03BI

CE EN 997:2015

# GLOBO



Ceramic antibacterial effect BATAFORM®



Bagno di Colore



SENZABRIDA®



Glazed product with CERASLIDE®



Drain 4 / 2,6 lt

Cod. **MDS03BI**

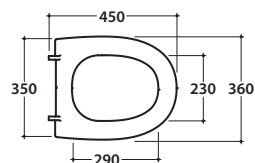
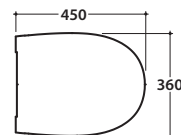
Wall-hung Wc No rim 54.36 h33 cm. Drain 4 / 2,6 Lt. Fixing kit included. Weight 18 Kg



Seat-cover with hinge system to quick release



Antibacterial treatment on toilet seats in shiny white



Cod. **MDR20BI**

Removable duroplast seat-cover with soft-closing system. Weight 3 Kg



Cod. **VA132**

Flow reductor.



Cod. **PU001**

Acoustic and crash protection.



Cod. **FI002**

Fixing brackets for W/H sanitary. Weight 2,5 Kg

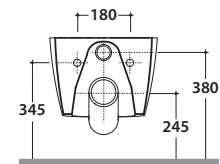
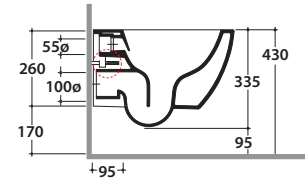
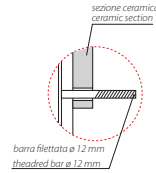
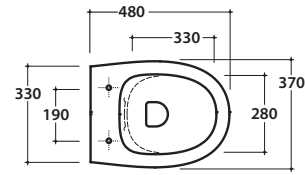
water label		
Average flushing volume (litres)		
Max. 3.5		<b>3,38</b>
Max. 4.5		
Max. 5.5		
Max. 6		
> 6		

www.europeanwaterlabel.eu

# 4ALL WALL-HUGN WC NO RIM MDS04BI

CE EN 997:2015

# GLOBO



Ceramic antibacterial effect BATAFORM®



Bagno di Colore



SENZABRIDA®



Glazed product with CERASLIDE®



Drain 4/2,6 Lt

Cod. **MDS04BI**

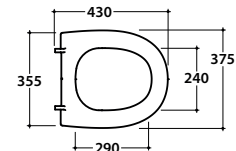
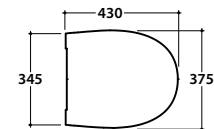
Wall-hung Wc No rim 48.37 h33,5 cm. Drain 4 / 2,6 Lt. Fixing kit included. Weight 20 Kg



Seat-cover with hinge system to quick release



Antibacterial treatment on toilet seats in shiny white



Cod. **MD022BI**

Removable duroplast seat-cover with soft-closing system. Weight 3 Kg



Cod. **VA132**

Flow reducer.



Cod. **PU001**

Acoustic and crash protection.



Cod. **FI002**

Fixing brackets for W/H sanitary. Weight 2,5 Kg