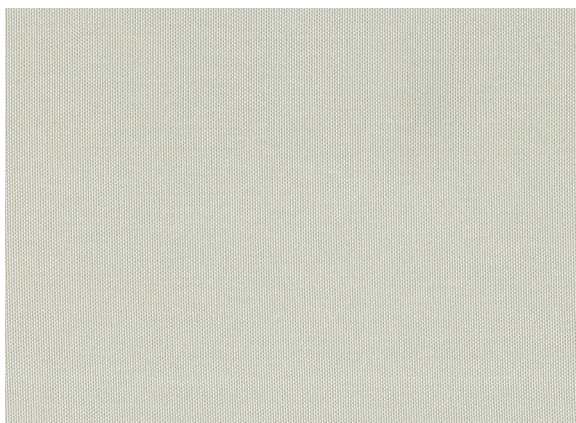


→ **Hero Reviva® 111**



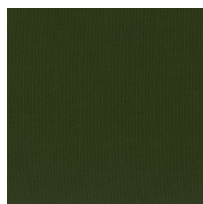
Caratteristiche Tecniche / Technical features:

| | |
|--|---|
| Categoria Category | Top Top |
| Altezza Height | cm 140 inch 55,1181 |
| Peso gr/mtl Weight gr/mtl | 585g/mt2 585 g/mt2 |
| Composizione Composition | 100% PET (riciclato) 100% PET (recycled) |
| Martindale Martindale | > 60.000 > 60.000 |
| Resistenza alla luce Light resistance | 6 6 |
| Simboli di lavaggio Wash Care Symbols | |

L'articolo Hero, appartenente alla Collezione Reviva® è realizzato interamente in Italia a km0 in 100% PET riciclato e 100% riciclabile a fine vita. Oltre alle certificazioni istituzionali (GRS, TC, LCA, OEKOTEX), tutti i lotti di tessuti della Collezione Reviva® sono accompagnati da un QR code che permette di ripercorrere e documentare l'intera filiera, per rilevarne l'originalità "dalla bottiglia di plastica fino al capo finito".

The art. Hero, belonging to the Reviva® Collection, is entirely made in Italy from 100% recycled and 100% end-of-life recyclable PET. In addition to the institutional certifications (GRS, TC, LCA, OEKOTEX), all batches of fabrics of the Reviva® Collection are accompanied by a QR code that allows the entire supply chain to be traced and documented, in order to prove their originality "from the plastic bottle to the finished textile".

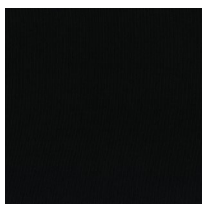
→ **Altri tessuti Hero Reviva® - Other Hero Reviva® fabrics**



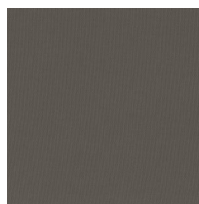
**Hero Reviva®
801**



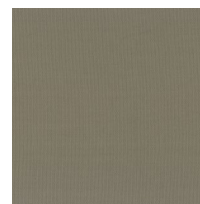
**Hero Reviva®
307**



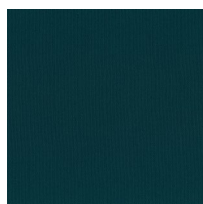
**Hero Reviva®
200**



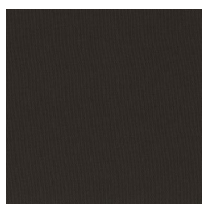
**Hero Reviva®
602**



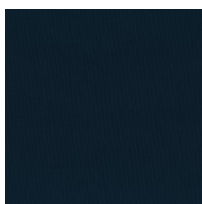
**Hero Reviva®
401**



**Hero Reviva®
701**

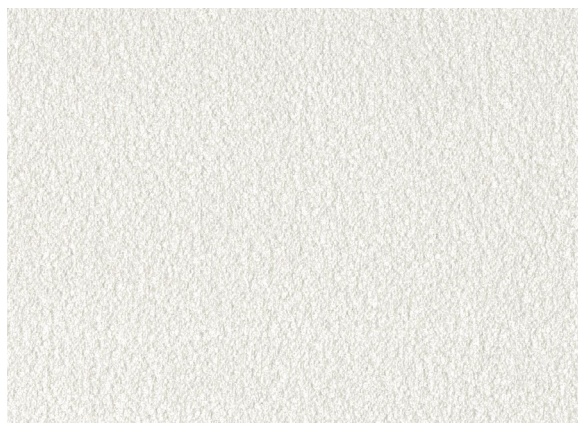


**Hero Reviva®
610**



**Hero Reviva®
706**

→ **Amelia Reviva® 100**



Caratteristiche Tecniche / Technical features:

| | |
|--|---|
| Categoria Category | Vip Vip |
| Altezza Height | cm 140 inch 55,1181 |
| Peso gr/mtl Weight gr/mtl | 980g/mt2 980 g/mt2 |
| Composizione Composition | 100% PET (riciclato) 100% PET (recycled) |
| Martindale Martindale | > 50.000 > 50.000 |
| Resistenza alla luce Light resistance | 6 6 |
| Simboli di lavaggio Wash Care Symbols | |

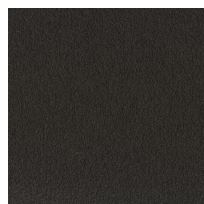
L'articolo Amelia, appartenente alla Collezione Reviva® è realizzato interamente in Italia a km0 in 100% PET riciclato e 100% riciclabile a fine vita. Oltre alle certificazioni istituzionali (GRS, TC, LCA, OEKOTEX), tutti i lotti di tessuti della Collezione Reviva® sono accompagnati da un QR code che permette di ripercorrere e documentare l'intera filiera, per rilevarne l'originalità "dalla bottiglia di plastica fino al capo finito".

The art. Amelia, belonging to the Reviva® Collection, is entirely made in Italy from 100% recycled and 100% end-of-life recyclable PET. In addition to the institutional certifications (GRS, TC, LCA, OEKOTEX), all batches of fabrics of the Reviva® Collection are accompanied by a QR code that allows the entire supply chain to be traced and documented, in order to prove their originality "from the plastic bottle to the finished textile".

→ **Altri tessuti Amelia Reviva® - Other Amelia Reviva® fabrics**



Amelia Reviva®
401



Amelia Reviva®
610



Amelia Reviva®
706



Amelia Reviva®
602



Amelia Reviva®
701

→ **Morris 10 Avorio**



Caratteristiche Tecniche / Technical features:

| | |
|--|---|
| Categoria Category | Media / Extra Media / Extra |
| Altezza Height | cm 140 inch 55,1181 |
| Peso gr/mtl Weight gr/mtl | 635 g/mt2 635 g/mt2 |
| Composizione Composition | 62% acrilico, 13% lino, 13% viscosa, 12% poliestere 62% acrylic, 13% linen, 13% viscose, 12% polyester |
| Martindale | 40.000 40.000 |
| Resistenza alla luce Light resistance | 4/5 4/5 |
| Simboli di lavaggio Wash Care Symbols | |

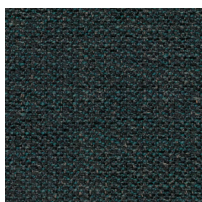
→ **Altri tessuti Morris - Other Morris fabrics**



Morris 12
Corda



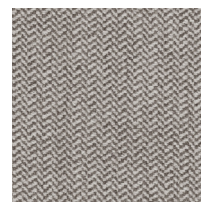
Morris 04
Grigio



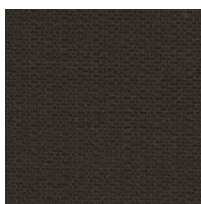
Morris 14
Ottanio



Morris 13



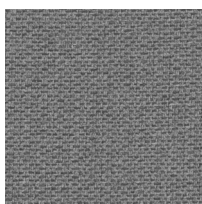
Morris 107



Morris 18
Tortora



Morris 24



Morris 07
Ghiaccio

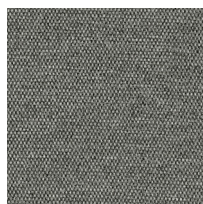
→ **Magnolia Bianco**



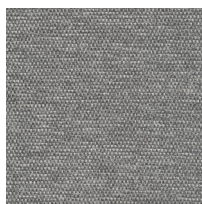
Caratteristiche Tecniche / Technical features:

| | |
|--|--|
| Categoria Category | Top Top |
| Altezza Height | cm 140 inch 55,1181 |
| Peso gr/mtl Weight gr/mtl | 550 g/mt2 550 g/mt2 |
| Composizione Composition | 80% cotone, 20% viscosa 80% cotton, 20% viscose |
| Martindale Martindale | 59.000 59.000 |
| Resistenza alla luce Light resistance | 6 6 |
| Simboli di lavaggio Wash Care Symbols | |

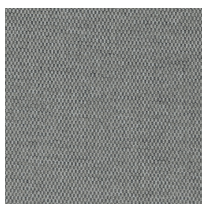
→ **Altri tessuti Magnolia - Other Magnolia fabrics**



Magnolia Bianco Nero



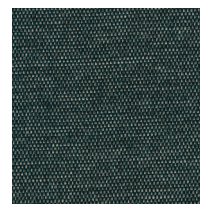
Magnolia 08 Grigio



Magnolia 05 Cenere



Magnolia 21 Blu



Magnolia 22 Ottanio



Magnolia 23 Verde



Magnolia 25 Maron

→ **Khali 01**



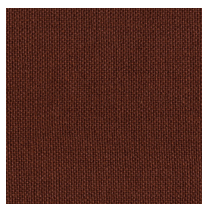
Caratteristiche Tecniche / Technical features:

| | |
|--|---|
| Categoria Category | Top Top |
| Altezza Height | cm 140 inch 55,1181 |
| Peso gr/mtl Weight gr/mtl | 590 g/mt2 590 g/mt2 |
| Composizione Composition | 90% lino, 10% nylon 90% linen, 10% nylon |
| Martindale Martindale | 40.000 40.000 |
| Resistenza alla luce Light resistance | 4/5 4/5 |
| Simboli di lavaggio Wash Care Symbols | |

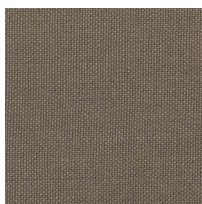
→ **Altri tessuti Khali - Other Khali fabrics**



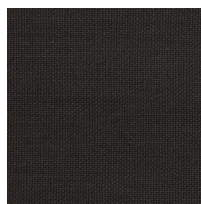
Khali 02



Khali 29



Khali 06



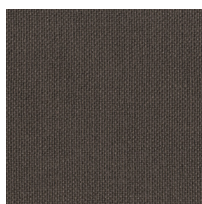
Khali 07



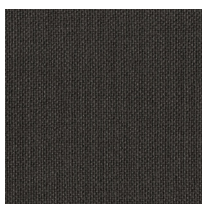
Khali 08



Khali 03



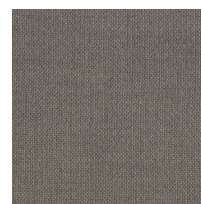
Khali 31



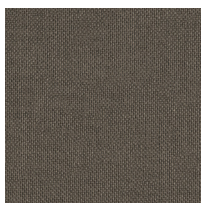
Khali 28



Khali 26



Khali 27



Khali 30



Khali 11

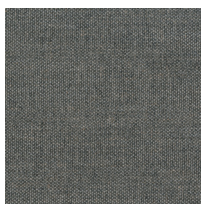
→ **River 15**



Caratteristiche Tecniche / Technical features:

| | |
|--|---|
| Categoria Category | Media / Extra Media / Extra |
| Altezza Height | cm 140 inch 55,1181 |
| Peso gr/mtl Weight gr/mtl | 580 g/mt2 580 g/mt2 |
| Composizione Composition | 51% acrilico, 11% lino, 11% poliestere, 11% viscosa, 16% cotone 51% acrylic, 11% linen, 11% polyester, 11% viscose, 16% cotton |
| Martindale | 40.000 40.000 |
| Resistenza alla luce Light resistance | 4/5 4/5 |
| Simboli di lavaggio Wash Care Symbols | |

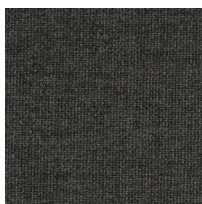
→ **Altri tessuti River - Other River fabrics**



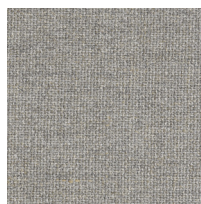
River 76



River 93



River 137



River 25



River 92



River 17



River 37



River 98

→ **Lampedusa 26**



Caratteristiche Tecniche / Technical features:

| | |
|--|---|
| Categoria Category | Media / Extra Media / Extra |
| Altezza Height | cm 140 inch 55,1181 |
| Peso gr/mtl Weight gr/mtl | 890/900 g/mt2 890/900 g/mt2 |
| Composizione Composition | 45% cotone, 28% acrilico, 19% viscosa, 8% lino 45% cotton, 28% acrylic, 19% viscose, 8% lino |
| Martindale | 25.000 25.000 |
| Resistenza alla luce Light resistance | 4/5 4/5 |
| Simboli di lavaggio Wash Care Symbols | |

→ **Altri tessuti Lampedusa - Other Lampedusa fabrics**



Lampedusa 32



Lampedusa 27



Lampedusa 14



Lampedusa 5



Lampedusa 24



Lampedusa 3

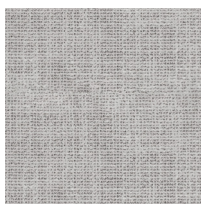
→ **Mira 30 Bianco**



Caratteristiche Tecniche / Technical features:

| | |
|--|--|
| Categoria Category | Top Top |
| Altezza Height | cm 140 inch 55,1181 |
| Peso gr/mtl Weight gr/mtl | 670 g/mt2 670 g/mt2 |
| Composizione Composition | 50% lino, 19% cotone, 14% viscosa, 10% acrilico, 7% nylon 50% linen, 19% cotton, 14% viscose, 10% acrylic, 7% nylon |
| Martindale | 29.000 29.000 |
| Resistenza alla luce Light resistance | 4/5 4/5 |
| Simboli di lavaggio Wash Care Symbols |  |

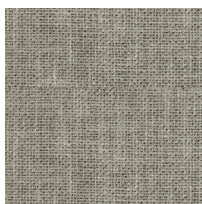
→ **Altri tessuti Mira - Other Mira fabrics**



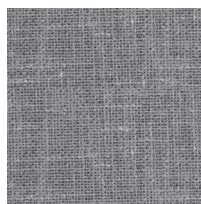
Mira 05
Perla



Mira 32



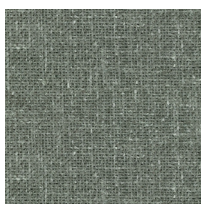
Mira 06
Grigio



Mira 11
Silver



Mira 24
Marrone



Mira 10
Verdino



Mira 27
Antracite

→ **Trimix 214 Naturale**



Caratteristiche Tecniche / Technical features:

| | |
|--|---|
| Categoria Category | Top Top |
| Altezza Height | cm 140 inch 55,1181 |
| Peso gr/mtl Weight gr/mtl | 875 g/mt2 875 g/mt2 |
| Composizione Composition | 56% cotone, 15% poliestere, 18% acrilico, 11% lino 56% cotton, 15% polyester, 18% acrylic, 11% linen |
| Martindale | 30.000 30.000 |
| Resistenza alla luce Light resistance | 4/5 4/5 |
| Simboli di lavaggio Wash Care Symbols | |

→ **Altri tessuti Trimix - Other Trimix fabrics**



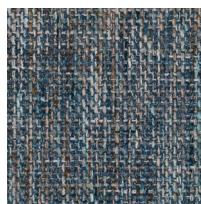
Trimix 215
Sabbia



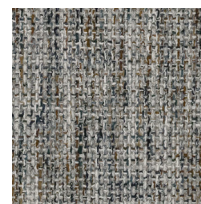
Trimix 209
Arancio



Trimix 213
Grigio



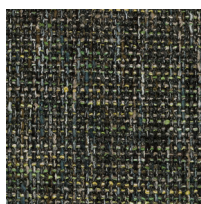
Trimix 202
Azzurro



Trimix 204
Perla

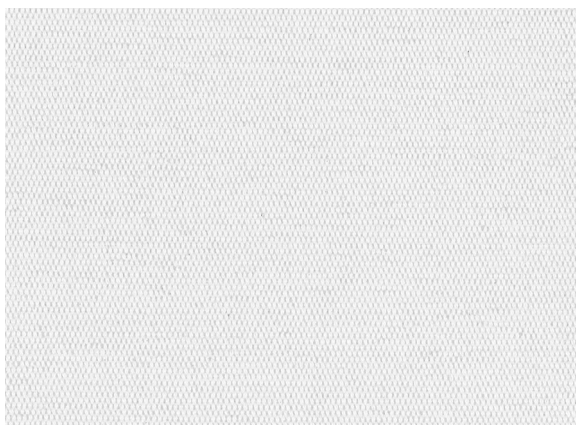


Trimix 205
Antracite



Trimix 207
Verde/Nero

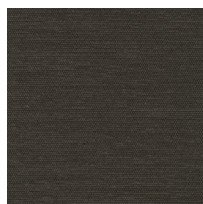
→ Tindari 01



Caratteristiche Tecniche / Technical features:

| | |
|--|--|
| Categoria Category | Basic Basic |
| Altezza Height | cm 140 inch 55,1181 |
| Peso gr/mtl Weight gr/mtl | 860 g/mt2 860 g/mt2 |
| Composizione Composition | 52% cotone, 47% acrilico, 1% poliestere 52% cotton, 47% acrylic, 1% polyester |
| Martindale | 40.000 40.000 |
| Resistenza alla luce Light resistance | 4/5 4/5 |
| Simboli di lavaggio Wash Care Symbols | |

→ Altri tessuti Tindari - Other Tindari fabrics



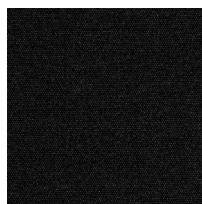
Tindari 32



Tindari 34



Tindari 21



Tindari 27



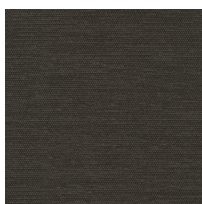
Tindari 29



Tindari 69



Tindari 68



Tindari 70



Tindari 14



Tindari 73

→ **Mikado 16 Avorio**



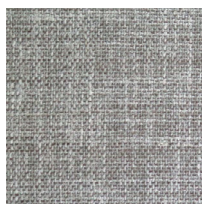
Caratteristiche Tecniche / Technical features:

| | |
|--|---|
| Categoria Category | Media / Extra Media / Extra |
| Altezza Height | cm 140 inch 55,1181 |
| Peso gr/mtl Weight gr/mtl | 420 g/mt2 420 g/mt2 |
| Composizione Composition | 46% acrilico, 24% cotone, 21% poliestere, 9% lino 46% acrylic, 24% cotton, 21% polyester, 9% linen |
| Martindale | 30.000 30.000 |
| Resistenza alla luce Light resistance | 4/5 4/5 |
| Simboli di lavaggio Wash Care Symbols | |

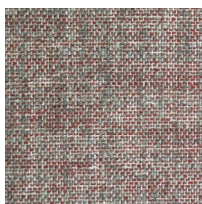
→ **Altri tessuti Mikado - Other Mikado fabrics**



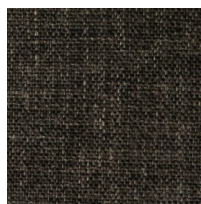
Mikado 20
Ghiaccio



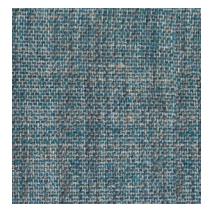
Mikado 82
Beige



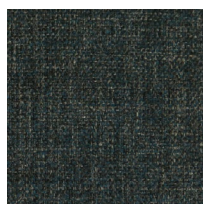
Mikado 77
Bruciati



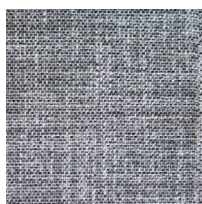
Mikado 83
Testa di Moro



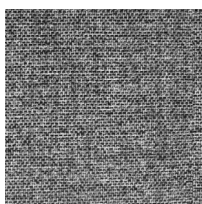
Mikado 71
Petrolio



Mikado 75
Blue



Mikado 62
Grigio



Mikado 63
Greige



Mikado 21
Nero

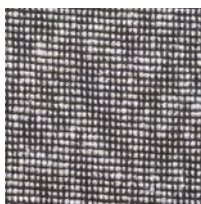
→ Fashion Principe



Caratteristiche Tecniche / Technical features:

| | |
|--|---|
| Categoria Category | Top Top |
| Altezza Height | cm 140 inch 55,1181 |
| Peso gr/mtl Weight gr/mtl | 594g/mt2 594 g/mt2 |
| Composizione Composition | 100% Cotone 100% Cotton |
| Martindale | 20.000 20.000 |
| Resistenza alla luce Light resistance | 4/5 4/5 |
| Simboli di lavaggio Wash Care Symbols |  |

→ Altri tessuti Fashion - Other Fashion fabrics



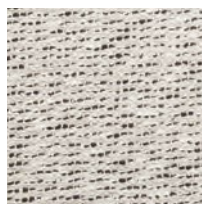
Fashion 29/10



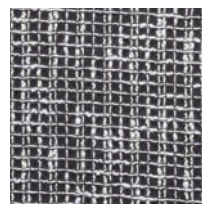
Fashion
Estonia 17



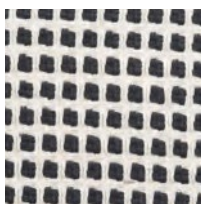
Fashion 17/19



Fashion 23/15

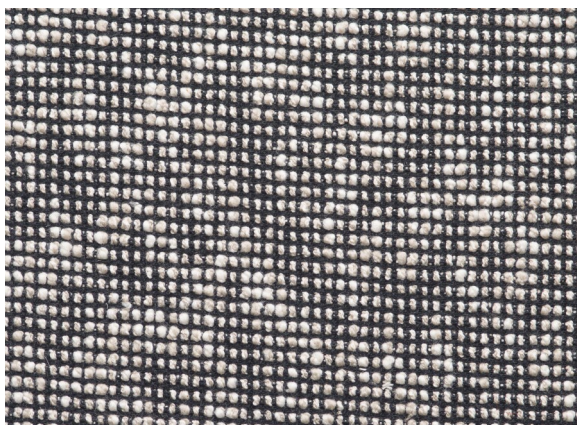


Fashion 50/15



Fashion Flos

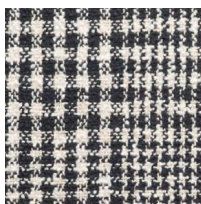
→ Fashion 29/10



Caratteristiche Tecniche / Technical features:

| | |
|--|----------------------------|
| Categoria Category | Special Special |
| Altezza Height | cm 140 inch 55 |
| Peso gr/mtl Weight gr/mtl | 639g/mt2 639 g/mt2 |
| Composizione Composition | 100% Cotone 100% Cotton |
| Martindale | 40.000 40.000 |
| Resistenza alla luce Light resistance | 4/5 4/5 |
| Simboli di lavaggio Wash Care Symbols | |

→ Altri tessuti Fashion - Other Fashion fabrics



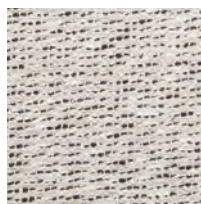
Fashion Principe



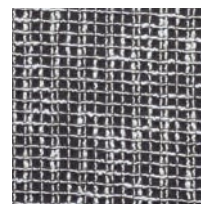
Fashion
Estonia 17



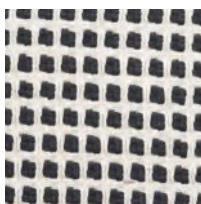
Fashion 17/19



Fashion 23/15

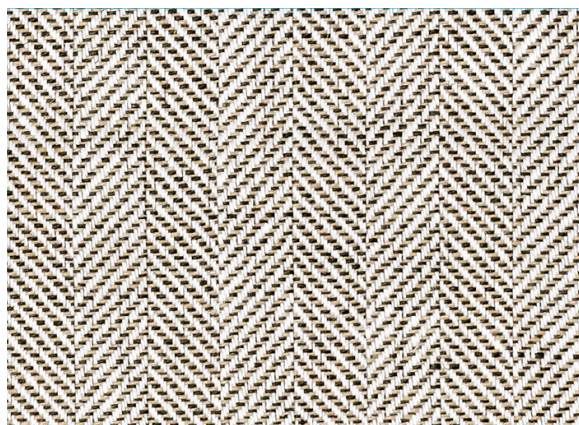


Fashion 50/15



Fashion Flos

→ Fashion Estonia 17



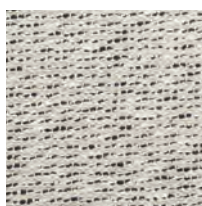
Caratteristiche Tecniche / Technical features:

| | |
|--|-------------------------|
| Categoria Category | Top Top |
| Altezza Height | cm 140 inch 55,1181 |
| Peso gr/mtl Weight gr/mtl | 400g/mt2 400 g/mt2 |
| Composizione Composition | 100% lino 100% linen |
| Martindale | 11.000 11.000 |
| Resistenza alla luce Light resistance | 6/7 6/7 |
| Simboli di lavaggio Wash Care Symbols | |

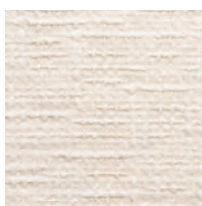
→ Altri tessuti Estonia - Other Estonia fabrics



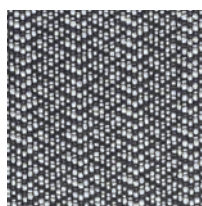
Fashion- Flos



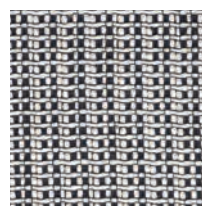
Fashion 23/15



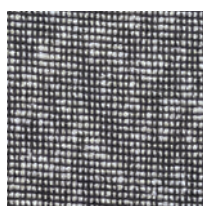
Fashion - Brembo



Fashion 29/15



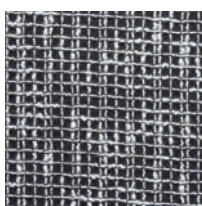
Fashion 34/15



Fashion 29/10



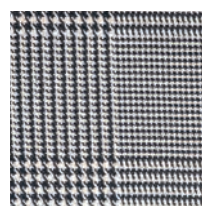
Fashion -
Principe



Fashion 50/15



Fashion -
Wizard rigato



Fashion 12/15

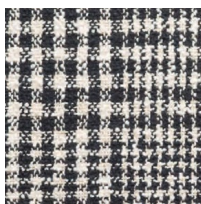
→ Fashion 17/19



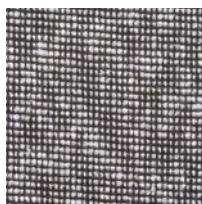
Caratteristiche Tecniche / Technical features:

| | |
|--|----------------------------|
| Categoria Category | Special Special |
| Altezza Height | cm 140 inch 55 |
| Peso gr/mtl Weight gr/mtl | 454g/mt2 454 g/mt2 |
| Composizione Composition | 100% Cotone 100% Cotton |
| Martindale | 30.000 30.000 |
| Resistenza alla luce Light resistance | 4/5 4/5 |
| Simboli di lavaggio Wash Care Symbols | |

→ Altri tessuti Fashion - Other Fashion fabrics



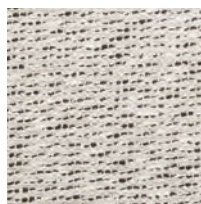
Fashion Principe



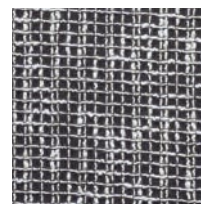
Fashion 29/10



Fashion
Estonia 17



Fashion 23/15



Fashion 50/15



Fashion Flos

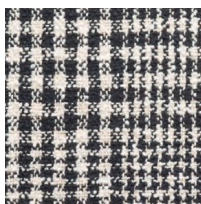
→ Fashion 23/15



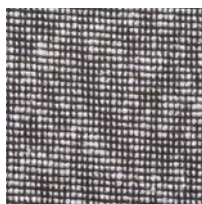
Caratteristiche Tecniche / Technical features:

| | |
|--|---|
| Categoria Category | Special Special |
| Altezza Height | cm 140 inch 55,1181 |
| Peso gr/mtl Weight gr/mtl | 500g/mt2 500 g/mt2 |
| Composizione Composition | 87% cotone, 9% viscosa, 4% lino 87% cotton, 9% viscose, 4% linen |
| Martindale | 30.000 30.000 |
| Resistenza alla luce Light resistance | 4/5 4/5 |
| Simboli di lavaggio Wash Care Symbols | |

→ Altri tessuti Fashion - Other Fashion fabrics



Fashion Principe



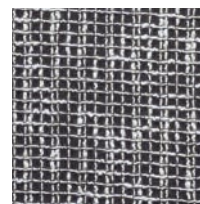
Fashion 29/10



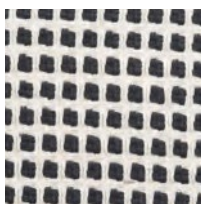
Fashion
Estonia 17



Fashion 17/19

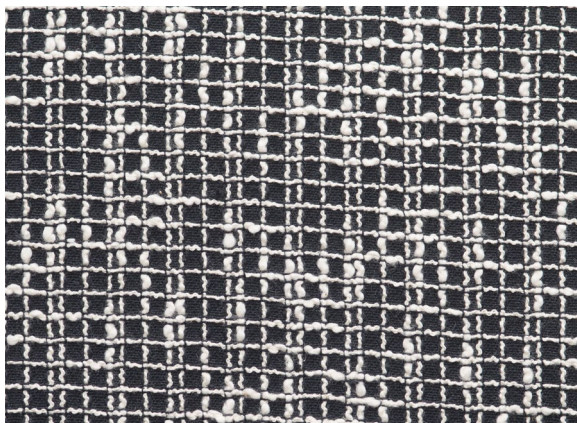


Fashion 50/15




Fashion Flos

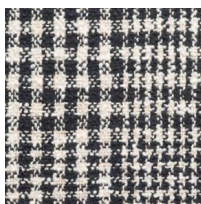
→ Fashion 50/15



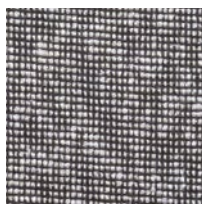
Caratteristiche Tecniche / Technical features:

| | |
|--|---|
| Categoria Category | Special Special |
| Altezza Height | cm 140 inch 55 |
| Peso gr/mtl Weight gr/mtl | 639g/mt2 639 g/mt2 |
| Composizione Composition | 100% Cotone 100% Cotton |
| Martindale | 9.000 9.000 |
| Resistenza alla luce Light resistance | 4/5 4/5 |
| Simboli di lavaggio Wash Care Symbols |  |

→ Altri tessuti Fashion - Other Fashion fabrics



Fashion Principe



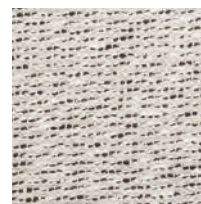
Fashion 29/10



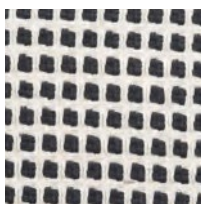
Fashion
Estonia 17



Fashion 17/19

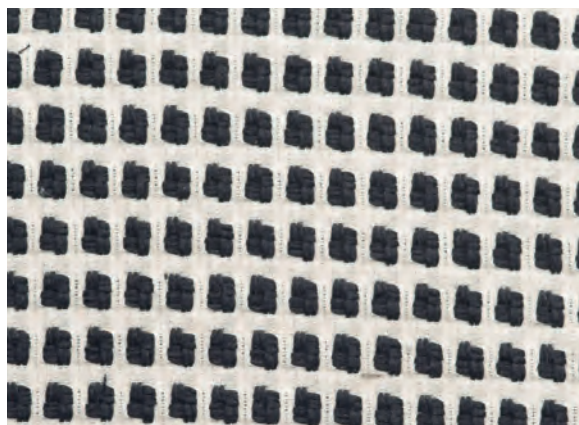


Fashion 23/15



Fashion Flos

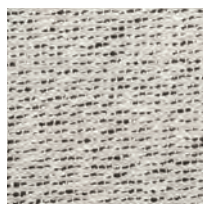
→ Fashion-Flos



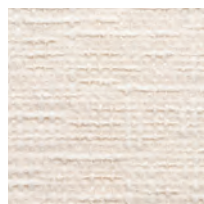
Caratteristiche Tecniche / Technical features:

| | |
|--|----------------------------|
| Categoria Category | Special Special |
| Altezza Height | cm 140 inch 55,1181 |
| Peso gr/mtl Weight gr/mtl | 525 g/mt2 525 g/mt2 |
| Composizione Composition | 100% cotone 100% cotton |
| Martindale Martindale | 13.000 13.000 |
| Resistenza alla luce Light resistance | 4/5 4/5 |
| Simboli di lavaggio Wash Care Symbols | |

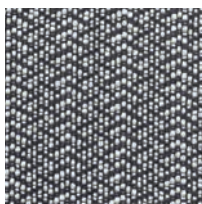
→ Altri tessuti Fashion- Other Fashion fabrics



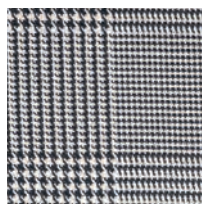
Fashion 23/15



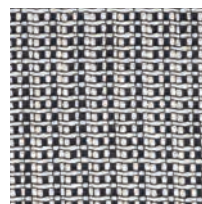
Fashion - Brembo



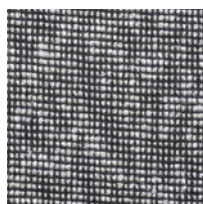
Fashion 29/15



Fashion 12/15



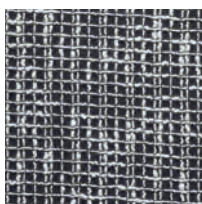
Fashion 34/15



Fashion 29/10



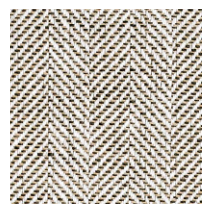
Fashion - Principe



Fashion 50/15



Fashion - Wizard rigato




Fashion Estonia 17

→ **Mirage 01 Beige/Bianco**



Caratteristiche Tecniche / Technical features:

| | |
|--|---|
| Categoria Category | Special Special |
| Altezza Height | cm 140 inch 55,1181 |
| Peso gr/mtl Weight gr/mtl | 550 g/mt2 550 g/mt2 |
| Composizione Composition | 72% cotone, 28% lino 72% cotton, 28% linen |
| Martindale Martindale | 20.000 20.000 |
| Resistenza alla luce Light resistance | 4/5 4/5 |
| Simboli di lavaggio Wash Care Symbols |  |

→ **Altri tessuti Mirage - Other Mirage fabrics**



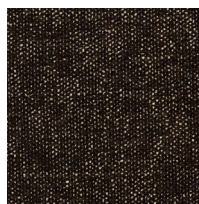
Mirage 02
Bianco/Beige



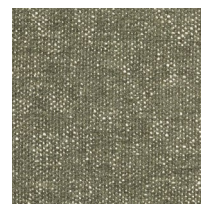
Mirage 10
Beige/ Grigio



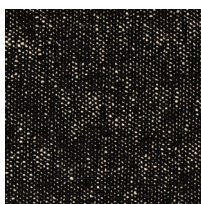
Mirage 04
Beige/Verde



Mirage 05
Beige/Marrone



Mirage 08
Beige/Salvia



Mirage 07
Pesca/Nero

→ **Panama 60**



Caratteristiche Tecniche / Technical features:

| | |
|--|---|
| Categoria Category | Top Top |
| Altezza Height | cm 140 inch 55,1181 |
| Peso gr/mtl Weight gr/mtl | 660 g/mt2 660 g/mt2 |
| Composizione Composition | 93% lino, 7% nylon 93% linen, 7% nylon |
| Martindale | 40.000 40.000 |
| Resistenza alla luce Light resistance | 4/5 4/5 |
| Simboli di lavaggio Wash Care Symbols | |

→ **Altri tessuti Panama - Other Panama fabrics**



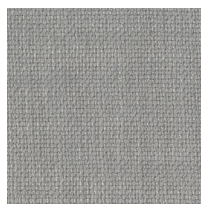
Panama 17



Panama 80



Panama 72



Panama 122



Panama 31



Panama 68



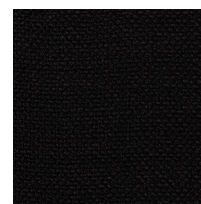
Panama 90



Panama 35



Panama 06



Panama 121

→ Erfoud 79



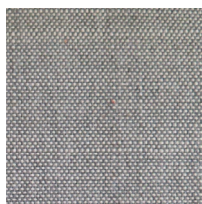
Caratteristiche Tecniche / Technical features:

| | |
|--|--|
| Categoria Category | Top Top |
| Altezza Height | cm 140 inch 55,1181 |
| Peso gr/mtl Weight gr/mtl | 630 g/mtl 630 g/mtl |
| Composizione Composition | 100% acrilico tinto in massa 100% solution dyed acrylic |
| Martindale | 40.000 40.000 |
| Resistenza alla luce Light resistance | 7/8 7/8 |
| Simboli di lavaggio Wash Care Symbols | |

→ Altri tessuti Erfoud - Other Erfoud fabrics



Erfoud 9379



Erfoud 926193



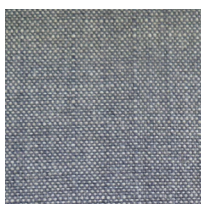
Erfoud 8779



Erfoud 9261



Erfoud 75

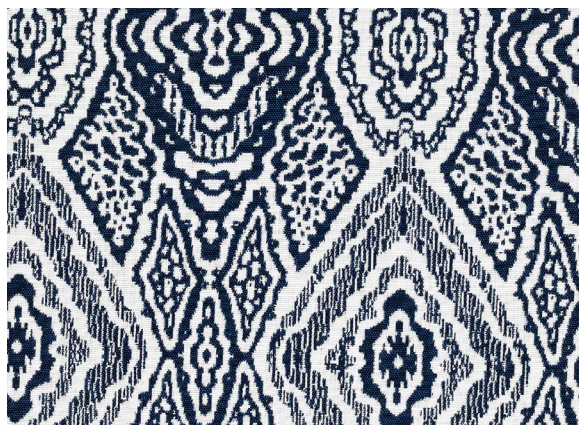


Erfoud 7579



Erfoud 9479

→ Fes 75



Caratteristiche Tecniche / Technical features:

| | |
|--|--|
| Categoria Category | Special Special |
| Altezza Height | cm 140 inch 55,1181 |
| Peso gr/mtl Weight gr/mtl | 600 g/mt2 600 g/mt2 |
| Composizione Composition | 100% acrilico tinto in massa 100% solution dyed acrylic |
| Martindale | 25.000 25.000 |
| Resistenza alla luce Light resistance | 7/8 7/8 |
| Simboli di lavaggio Wash Care Symbols | |

→ Altri tessuti Fes - Other Fes fabrics

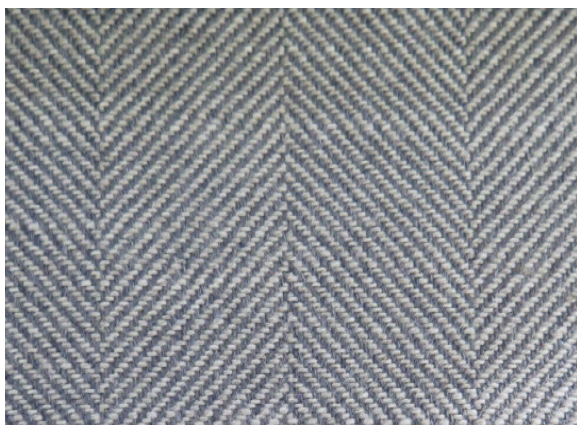


Fes 926



Fes 79

→ **Tan Tan 7579**



Caratteristiche Tecniche / Technical features:

| | |
|--|--|
| Categoria Category | Top Top |
| Altezza Height | cm 140 inch 55,1181 |
| Peso gr/mtl Weight gr/mtl | 750 g/mtl 750g/mtl |
| Composizione Composition | 100% acrilico tinto in massa 100% solution dyed acrylic |
| Martindale Martindale | 40.000 40.000 |
| Resistenza alla luce Light resistance | 7/8 7/8 |
| Simboli di lavaggio Wash Care Symbols | |

→ **Altri tessuti Tan Tan - Other Tan Tan fabrics**



Tan Tan 7587



Tan Tan 9379



Tan Tan 9479

→ **Anversa 21**



Caratteristiche Tecniche / Technical features:

| | |
|--|---|
| Categoria Category | Star Star |
| Altezza Height | cm 140 inch 55,1181 |
| Peso gr/mtl Weight gr/mtl | 740 g/mtl 740 g/mtl |
| Composizione Composition | 52% acrilico, 40% lino, 8% nylon 52% acrylic, 40% linen, 8% nylon |
| Martindale | 30.000 30.000 |
| Resistenza alla luce Light resistance | 4/5 4/5 |
| Simboli di lavaggio Wash Care Symbols |  |

→ **Altri tessuti Anversa - Other Anversa fabrics**



Anversa 9



Anversa 14



Anversa 17



Anversa 20



Anversa 50



Anversa 51

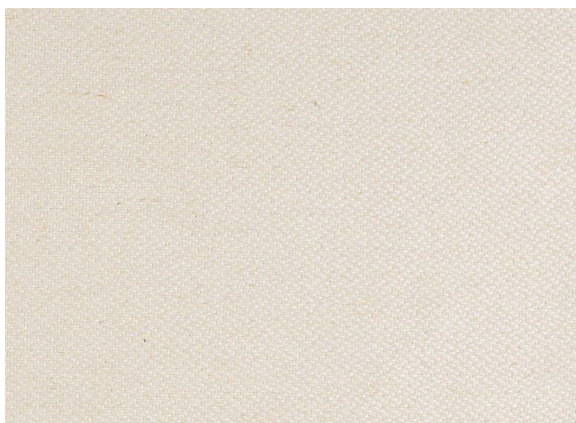


Anversa 52




Anversa 53

→ **Alabama 12**



Caratteristiche Tecniche / Technical features:

| | |
|--|---|
| Categoria Category | Basic Basic |
| Altezza Height | cm 140 inch 55,1181 |
| Peso gr/mtl Weight gr/mtl | 550 g/mt2 550 g/mt2 |
| Composizione Composition | 45% viscosa, 22% lino, 20% cotone, 10% acrilico, 3% altre fibre 45% viscose, 22% linen, 20% cotton, 10% acrylic, 3% other fibers |
| Martindale | 25.000 25.000 |
| Resistenza alla luce Light resistance | 4/5 4/5 |
| Simboli di lavaggio Wash Care Symbols |  |

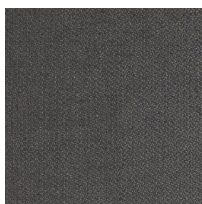
→ **Altri tessuti Alabama - Other Alabama fabrics**



Alabama 01



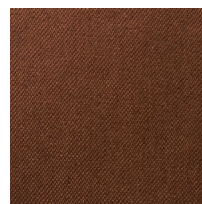
Alabama 07



Alabama 10



Alabama 17



Alabama 155



Alabama 02



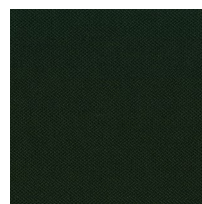
Alabama 04



Alabama 05

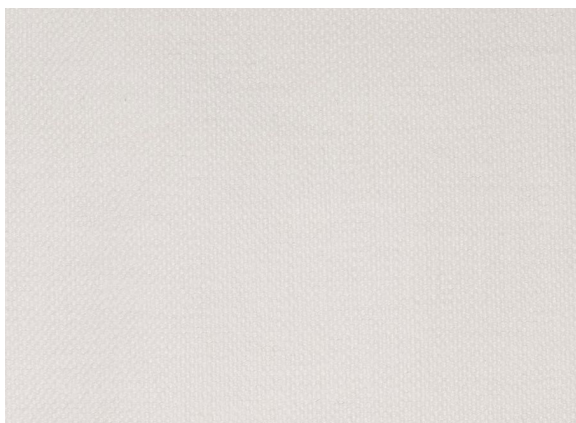


Alabama 16




Alabama 146

→ **Tosca 01 Bianco**



Caratteristiche Tecniche / Technical features:

| | |
|--|---|
| Categoria Category | Media / Extra Media / Extra |
| Altezza Height | cm 140 inch 55,1181 |
| Peso gr/mtl Weight gr/mtl | 380 g/mt2 380 g/mt2 |
| Composizione Composition | 63% cotone, 37% lino 63% cotton, 37% linen |
| Martindale | 32.500 32.500 |
| Resistenza alla luce Light resistance | 4/5 4/5 |
| Simboli di lavaggio Wash Care Symbols |  |

→ **Altri tessuti Tosca - Other Tosca fabrics**



Tosca 20
Malva



Tosca 36
Ruggine



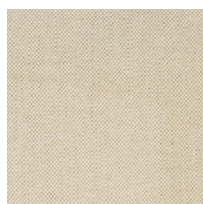
Tosca 04
Grigio



Tosca 22
Ghiaccio



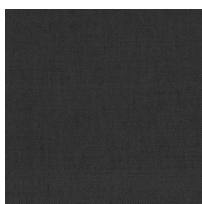
Tosca 48
Verde oliva



Tosca 10
Ecrù



Tosca 59
Panna



Tosca 61
Taupe



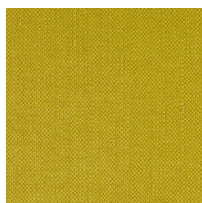
Tosca 54
Grigio chiaro



Tosca 53
Ottanio



Tosca 05
Blu nero



Tosca 45
Verde acido

→ Geometrico 1524



Caratteristiche Tecniche / Technical features:

| | |
|--|---|
| Categoria Category | Special Special |
| Altezza Height | cm 140 inch 55,1181 |
| Peso gr/mtl Weight gr/mtl | 650 g/mtl 650 g/mtl |
| Composizione Composition | 100% acrilico tinto in massa 100% solution dyed acrylic |
| Martindale Martindale | 20.000 20.000 |
| Resistenza alla luce Light resistance | 7/8 7/8 |
| Simboli di lavaggio Wash Care Symbols |  |

→ Altri tessuti Decor- Other Decor fabrics



Rete 1524



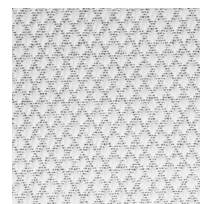
Riga 1524



Fiore 1524



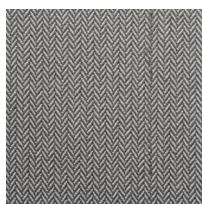
Sabbia 15



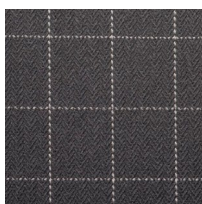
Rombo Rilievo
1524



Sabbia 107



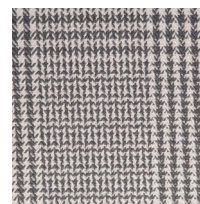
Spigato 107



Quadro 107

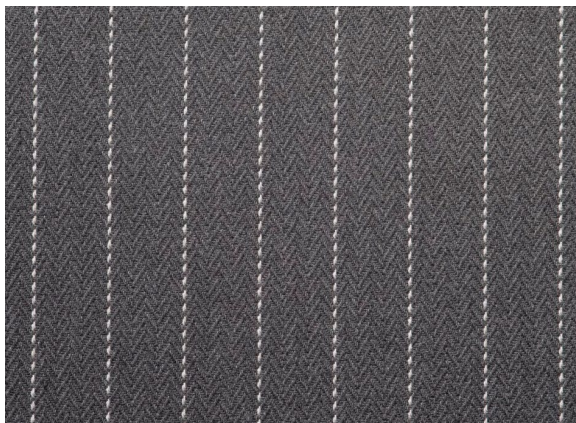


Gessato 17



Principe di Galles
107

→ **Gessato 17**



Caratteristiche Tecniche / Technical features:

| | |
|--|---|
| Categoria Category | Special Special |
| Altezza Height | cm 140 inch 55,1181 |
| Peso gr/mtl Weight gr/mtl | 620 g/mtl 620 g/mtl |
| Composizione Composition | 100% acrilico tinto in massa 100% solution dyed acrylic |
| Martindale Martindale | 30.000 30.000 |
| Resistenza alla luce Light resistance | 7/8 7/8 |
| Simboli di lavaggio Wash Care Symbols |  |

→ **Altri tessuti Decor- Other Decor fabrics**



Rete 1524



Riga 1524



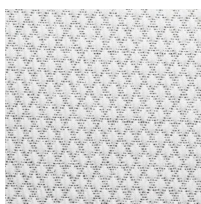
Fiore 1524



Geometrico 1524



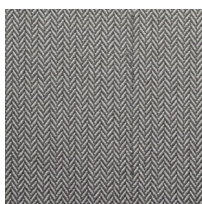
Sabbia 15



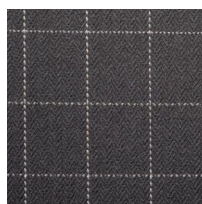
Rombo Rilievo
1524



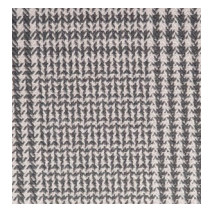
Sabbia 107



Spigato 107

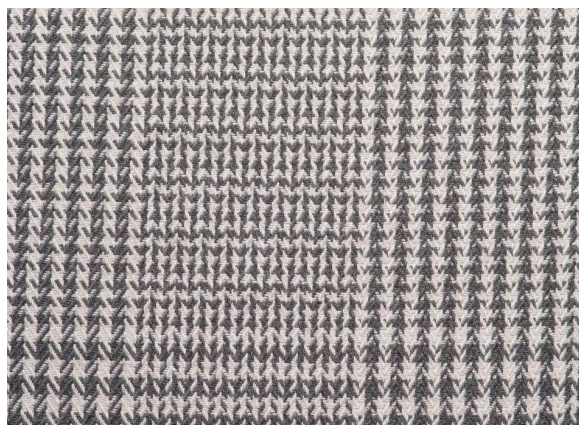


Quadro 107




Principe di Galles
107

→ Principe di Galles 107



Caratteristiche Tecniche / Technical features:

| | |
|--|---|
| Categoria Category | Special Special |
| Altezza Height | cm 140 inch 55,1181 |
| Peso gr/mtl Weight gr/mtl | 620 g/mtl 620 g/mtl |
| Composizione Composition | 100% acrilico tinto in massa 100% solution dyed acrylic |
| Martindale Martindale | 30.000 30.000 |
| Resistenza alla luce Light resistance | 7/8 7/8 |
| Simboli di lavaggio Wash Care Symbols |  |

→ Altri tessuti Decor- Other Decor fabrics



Rete 1524



Riga 1524



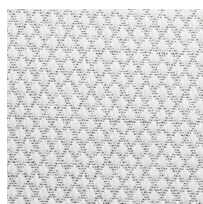
Fiore 1524



Geometrico 1524



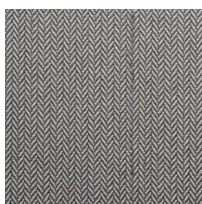
Sabbia 15



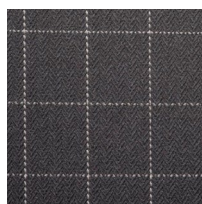
Rombo Rilievo
1524



Sabbia 107



Spigato 107

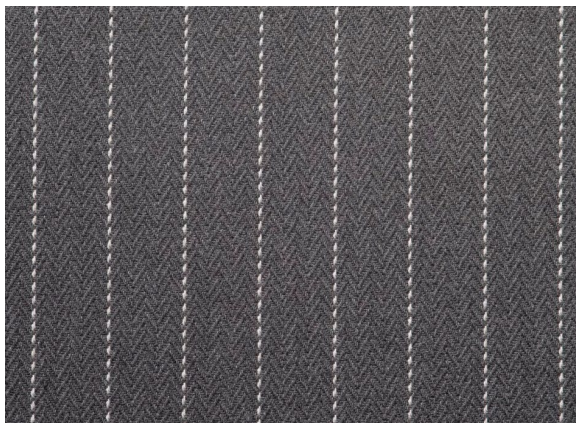


Quadro 107



Gessato 17

→ **Gessato 17**



Caratteristiche Tecniche / Technical features:

| | |
|--|---|
| Categoria Category | Special Special |
| Altezza Height | cm 140 inch 55,1181 |
| Peso gr/mtl Weight gr/mtl | 620 g/mtl 620 g/mtl |
| Composizione Composition | 100% acrilico tinto in massa 100% solution dyed acrylic |
| Martindale | 30.000 30.000 |
| Resistenza alla luce Light resistance | 7/8 7/8 |
| Simboli di lavaggio Wash Care Symbols |  |

→ **Altri tessuti Decor- Other Decor fabrics**



Rete 1524



Riga 1524



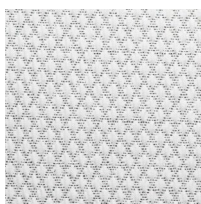
Fiore 1524



Geometrico 1524



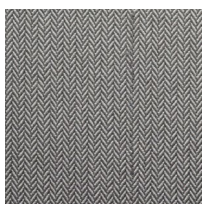
Sabbia 15



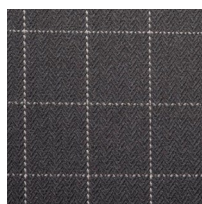
Rombo Rilievo
1524



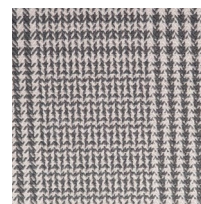
Sabbia 107



Spigato 107

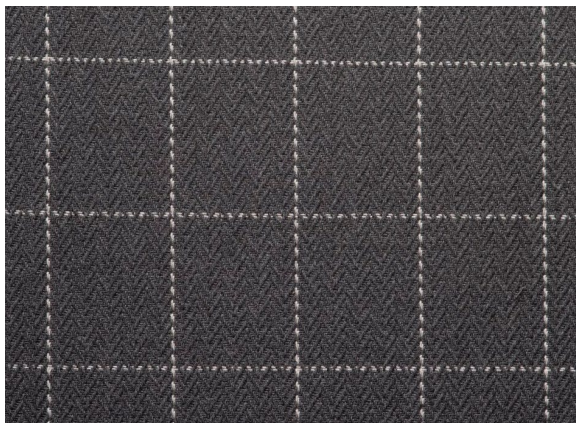


Quadro 107



Principe di Galles
107

→ **Quadro 107**



Caratteristiche Tecniche / Technical features:

| | |
|--|--|
| Categoria Category | Special Special |
| Altezza Height | cm 140 inch 55,1181 |
| Peso gr/mtl Weight gr/mtl | 620 g/mtl 620 g/mtl |
| Composizione Composition | 100% acrilico tinto in massa 100% solution dyed acrylic |
| Martindale Martindale | 30.000 30.000 |
| Resistenza alla luce Light resistance | 7/8 7/8 |
| Simboli di lavaggio Wash Care Symbols | |

→ **Altri tessuti Decor- Other Decor fabrics**



Rete 1524



Riga 1524



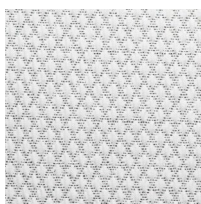
Fiore 1524



Geometrico 1524



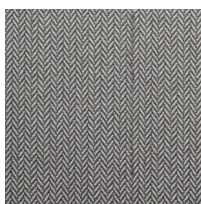
Sabbia 15



Rombo Rilievo
1524



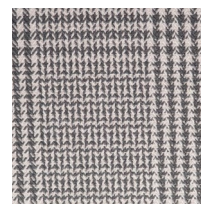
Sabbia 107



Spigato 107



Gessato 17



Principe di Galles
107

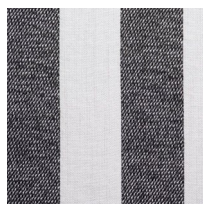
→ Rete 1524



Caratteristiche Tecniche / Technical features:

| | |
|--|--|
| Categoria Category | Special Special |
| Altezza Height | cm 140 inch 55,1181 |
| Peso gr/mtl Weight gr/mtl | 650 g/mtl 650 g/mtl |
| Composizione Composition | 100% acrilico tinto in massa 100% solution dyed acrylic |
| Martindale Martindale | 15.000 15.000 |
| Resistenza alla luce Light resistance | 7/8 7/8 |
| Simboli di lavaggio Wash Care Symbols | |

→ Altri tessuti Decor- Other Decor fabrics



Riga 1524



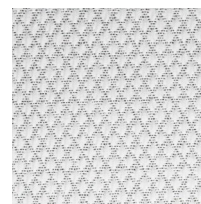
Fiore 1524



Geometrico 1524



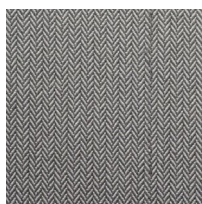
Sabbia 15



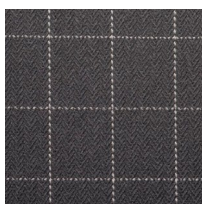
Rombo Rilievo
1524



Sabbia 107



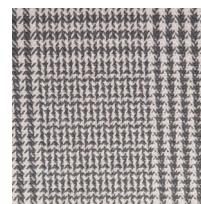
Spigato 107



Quadro 107



Gessato 17



Principe di Galles
107

→ Riga 1524



Caratteristiche Tecniche / Technical features:

| | |
|--|---|
| Categoria Category | Special Special |
| Altezza Height | cm 140 inch 55,1181 |
| Peso gr/mtl Weight gr/mtl | 650 g/mtl 650 g/mtl |
| Composizione Composition | 100% acrilico tinto in massa 100% solution dyed acrylic |
| Martindale Martindale | 20.000 20.000 |
| Resistenza alla luce Light resistance | 7/8 7/8 |
| Simboli di lavaggio Wash Care Symbols |  |

→ Altri tessuti Decor- Other Decor fabrics



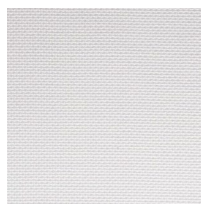
Rete 1524



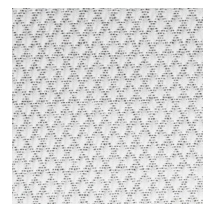
Fiore 1524



Geometrico 1524



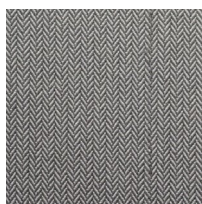
Sabbia 15



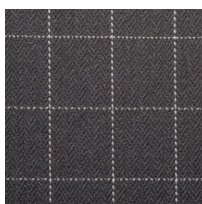
Rombo Rilievo
1524



Sabbia 107



Spigato 107



Quadro 107

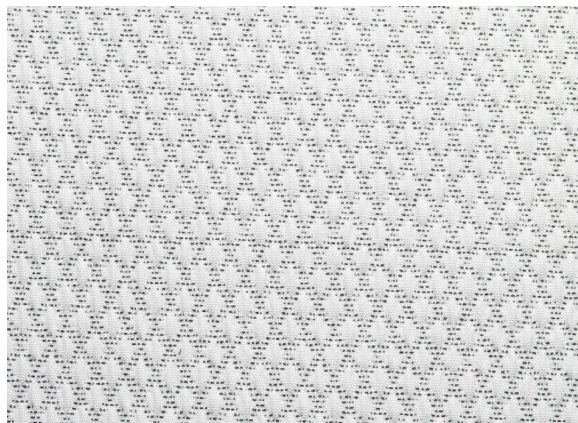


Gessato 17



Principe di Galles
107

→ **Rombo Rilievo 1524**



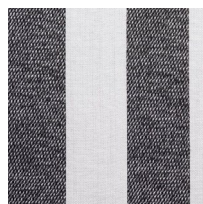
Caratteristiche Tecniche / Technical features:

| | |
|--|--|
| Categoria Category | Special Special |
| Altezza Height | cm 140 inch 55,1181 |
| Peso gr/mtl Weight gr/mtl | 650 g/mtl 650 g/mtl |
| Composizione Composition | 100% acrilico tinto in massa 100% solution dyed acrylic |
| Martindale Martindale | 20.000 20.000 |
| Resistenza alla luce Light resistance | 7/8 7/8 |
| Simboli di lavaggio Wash Care Symbols | |

→ **Altri tessuti Decor- Other Decor fabrics**



Rete 1524



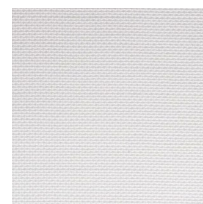
Riga 1524



Fiore 1524



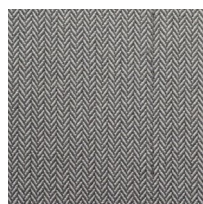
Geometrico 1524



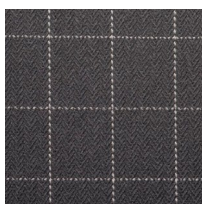
Sabbia 15



Sabbia 107



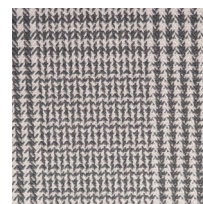
Spigato 107



Quadro 107



Gessato 17



Principe di Galles
107

→ **Sabbia 107**



Caratteristiche Tecniche / Technical features:

| | |
|--|---|
| Categoria Category | Special Special |
| Altezza Height | cm 140 inch 55,1181 |
| Peso gr/mtl Weight gr/mtl | 520 g/mtl 520 g/mtl |
| Composizione Composition | 100% acrilico tinto in massa 100% solution dyed acrylic |
| Martindale | 30.000 30.000 |
| Resistenza alla luce Light resistance | 7/8 7/8 |
| Simboli di lavaggio Wash Care Symbols |  |

→ **Altri tessuti Decor- Other Decor fabrics**



Rete 1524



Riga 1524



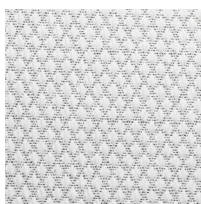
Fiore 1524



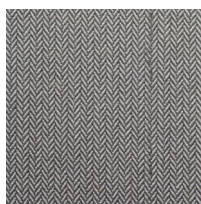
Geometrico 1524



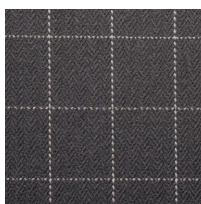
Sabbia 15



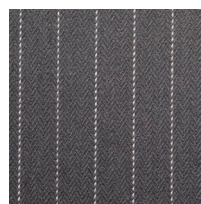
**Rombo Rilievo
1524**



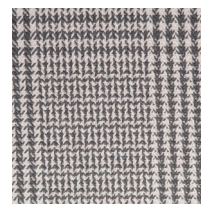
Spigato 107



Quadro 107

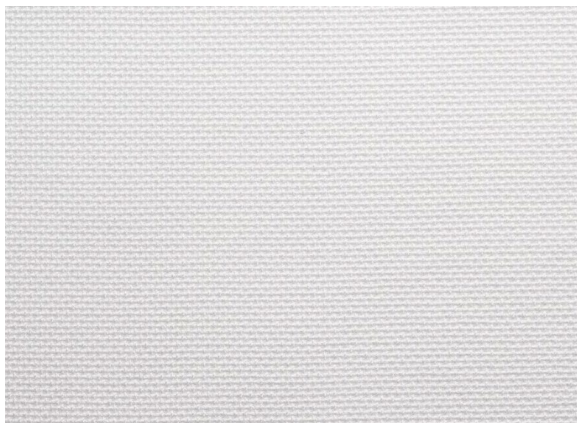


Gessato 17



**Principe di Galles
107**

→ **Sabbia 15**



Caratteristiche Tecniche / Technical features:

| | |
|--|---|
| Categoria Category | Special Special |
| Altezza Height | cm 140 inch 55,1181 |
| Peso gr/mtl Weight gr/mtl | 520 g/mtl 520 g/mtl |
| Composizione Composition | 100% acrilico tinto in massa 100% solution dyed acrylic |
| Martindale | 30.000 30.000 |
| Resistenza alla luce Light resistance | 7/8 7/8 |
| Simboli di lavaggio Wash Care Symbols |  |

→ **Altri tessuti Decor- Other Decor fabrics**



Rete 1524



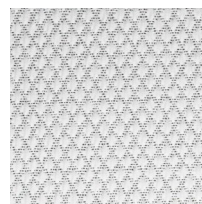
Riga 1524



Fiore 1524



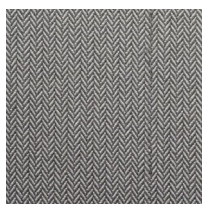
Geometrico 1524



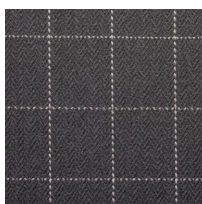
Rombo Rilievo
1524



Sabbia 107



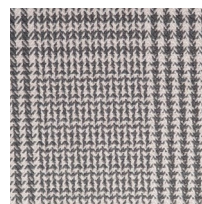
Spigato 107



Quadro 107

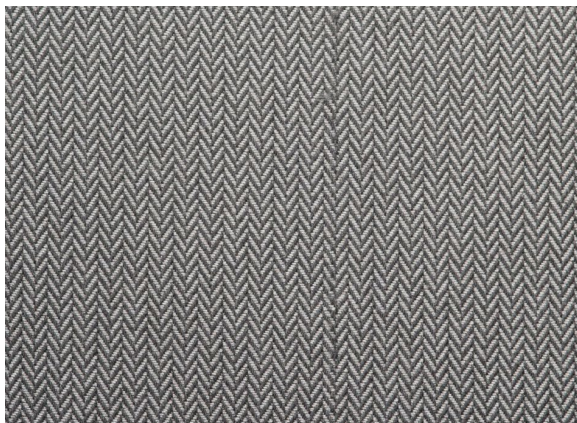


Gessato 17



Principe di Galles
107

→ Spigato 107



Caratteristiche Tecniche / Technical features:

| | |
|--|---|
| Categoria Category | Special Special |
| Altezza Height | cm 140 inch 55,1181 |
| Peso gr/mtl Weight gr/mtl | 620 g/mtl 620 g/mtl |
| Composizione Composition | 100% acrilico tinto in massa 100% solution dyed acrylic |
| Martindale Martindale | 30.000 30.000 |
| Resistenza alla luce Light resistance | 7/8 7/8 |
| Simboli di lavaggio Wash Care Symbols |  |

→ Altri tessuti Decor- Other Decor fabrics



Rete 1524



Riga 1524



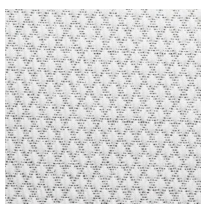
Fiore 1524



Geometrico 1524



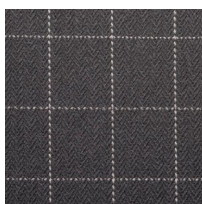
Sabbia 15



Rombo Rilievo
1524



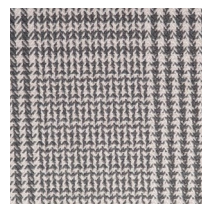
Sabbia 107



Quadro 107



Gessato 17



Principe di Galles
107

→ Fiore 1524



Caratteristiche Tecniche / Technical features:

| | |
|--|---|
| Categoria Category | Special Special |
| Altezza Height | cm 140 inch 55,1181 |
| Peso gr/mtl Weight gr/mtl | 650 g/mtl 650 g/mtl |
| Composizione Composition | 100% acrilico tinto in massa 100% solution dyed acrylic |
| Martindale Martindale | 20.000 20.000 |
| Resistenza alla luce Light resistance | 7/8 7/8 |
| Simboli di lavaggio Wash Care Symbols |  |

→ Altri tessuti Decor- Other Decor fabrics



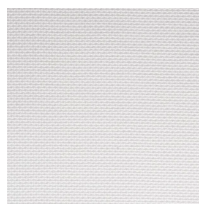
Rete 1524



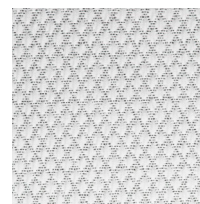
Riga 1524



Geometrico 1524



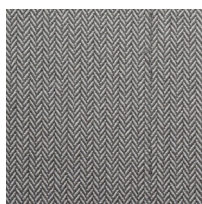
Sabbia 15



Rombo Rilievo
1524



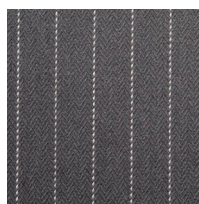
Sabbia 107



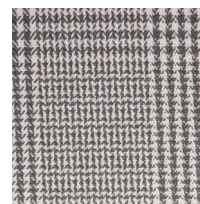
Spigato 107



Quadro 107

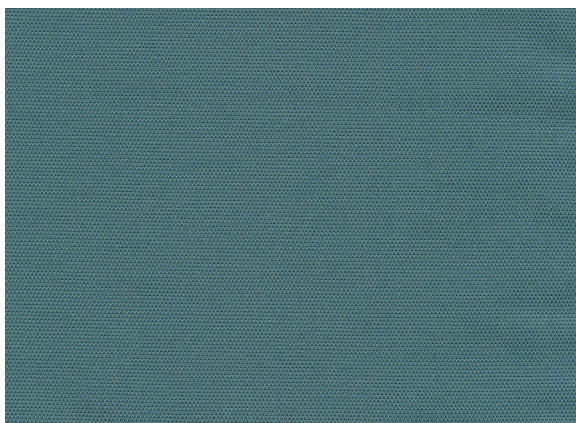


Gessato 17



Principe di Galles
107

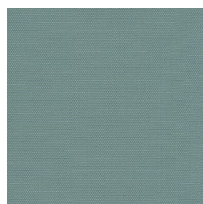
→ Mezzo 10227 Atlas



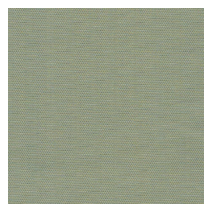
Caratteristiche Tecniche / Technical features:

| | |
|--|--|
| Categoria Category | Media / Extra Media / Extra |
| Altezza Height | cm 140 inch 55,1181 |
| Peso gr/mtl Weight gr/mtl | 285g/mt2 285 g/mt2 |
| Composizione Composition | 100% Sunbrella® Acrylic 100% Sunbrella® Acrylic |
| Martindale Martindale | 22.000 22.000 |
| Resistenza alla luce Light resistance | 8 8 |
| Simboli di lavaggio Wash Care Symbols | |

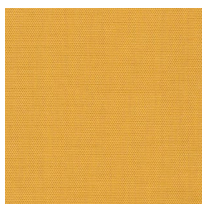
→ Altri tessuti Mezzo - Other Mezzo fabrics



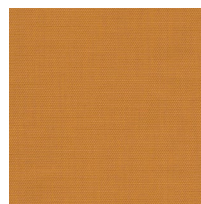
Mezzo 10228
Celadon



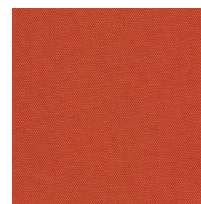
Mezzo 10229
Opal



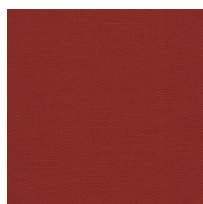
Mezzo 10219
Sulfur



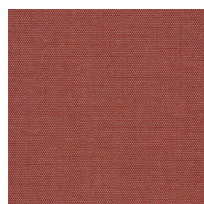
Mezzo 10220
Turmeric



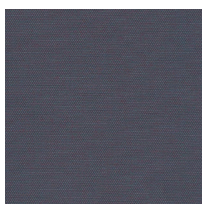
Mezzo 10222
Tigerlily



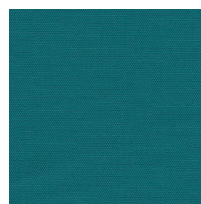
Mezzo 10223
Henna



Mezzo 10224
Scale

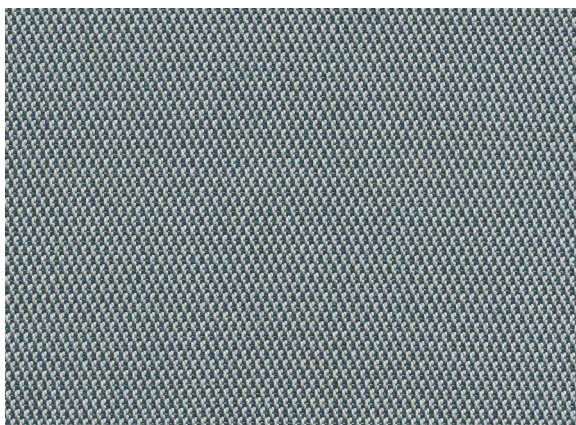


Mezzo 10225
Feather



Mezzo 10226
Tropic

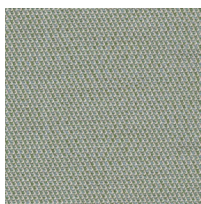
→ **Lopi R042 Nénuphar**



Caratteristiche Tecniche / Technical features:

| | |
|--|--|
| Categoria Category | Top Top |
| Altezza Height | cm 140 inch 55,1181 |
| Peso gr/mtl Weight gr/mtl | 680 g/mt2 680 g/mt2 |
| Composizione Composition | 100% Sunbrella® Acrylic 100% Sunbrella® Acrylic |
| Martindale | 90.000 90.000 |
| Resistenza alla luce Light resistance | 8 8 |
| Simboli di lavaggio Wash Care Symbols | |

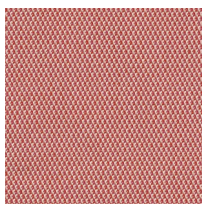
→ **Altri tessuti Lopi - Other Lopi fabrics**



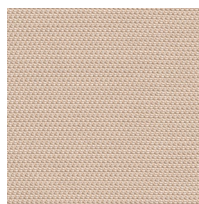
Lopi R038
Beldi



Lopi R018
Marble



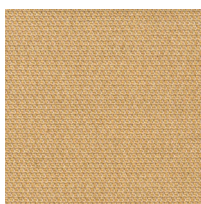
Lopi R040
Azalea



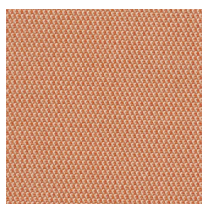
Lopi R034
Antique



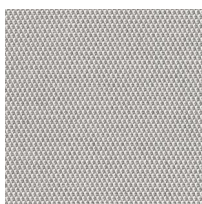
Lopi R019 Sand



Lopi R039
Biscuit



Lopi R041
Tangerine

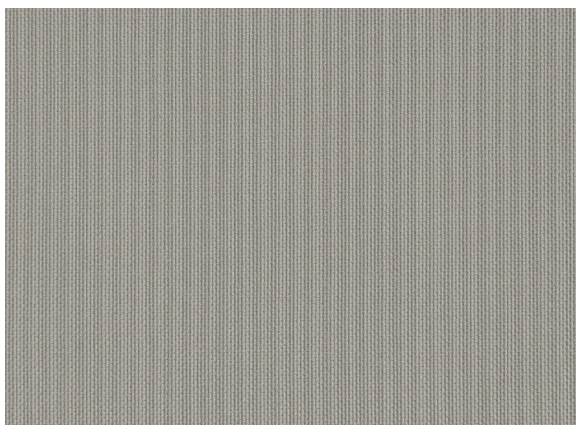


Lopi R043 Ash



Lopi R033
Snow

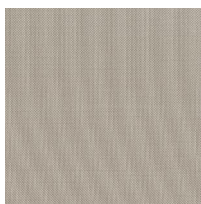
→ **Ginostra 94**



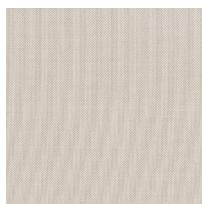
Caratteristiche Tecniche / Technical features:

| | |
|--|--|
| Categoria Category | Media / Extra Media / Extra |
| Altezza Height | cm 140 inch 55,1181 |
| Peso gr/mtl Weight gr/mtl | 300 g/mt2 300 g/mt2 |
| Composizione Composition | 100% acrilico tinto in massa 100% solution dyed acrylic |
| Martindale | 40.000 40.000 |
| Resistenza alla luce Light resistance | 7/8 7/8 |
| Simboli di lavaggio Wash Care Symbols | |

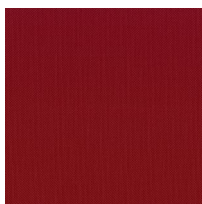
→ **Altri tessuti Ginostra - Other Ginostra fabrics**



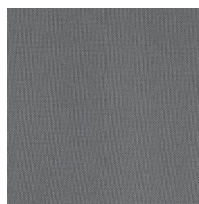
Ginostra 929



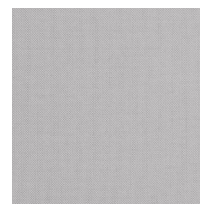
Ginostra 15929



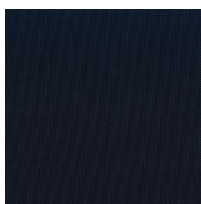
Ginostra 98



Ginostra 97



Ginostra 79

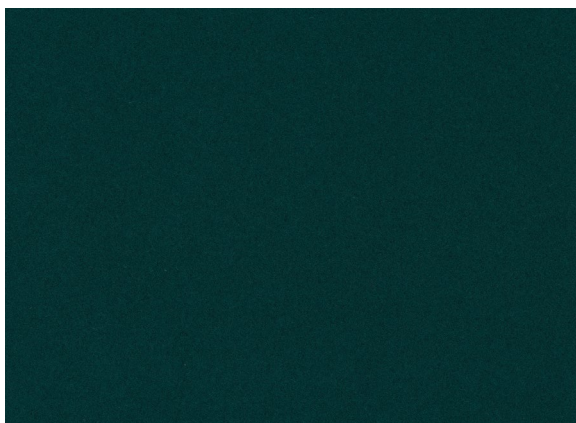


Ginostra 92



Ginostra 07

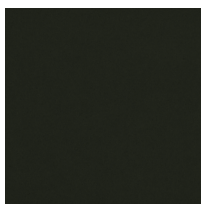
→ **Divina 3 893**



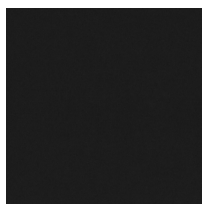
Caratteristiche Tecniche / Technical features:

| | |
|--|---|
| Categoria Category | Vip Vip |
| Altezza Height | cm 150 inch 59 |
| Peso gr/mtl Weight gr/mtl | 840g/mt2 840 g/mt2 |
| Composizione Composition | 100% Lana Vergine 100% New Wool |
| Martindale | 45.000 45.000 |
| Resistenza alla luce Light resistance | 5/6 5/6 |
| Simboli di lavaggio Wash Care Symbols |  |

→ **Altri tessuti Divina 3 - Other Divina 3 fabrics**



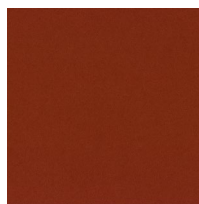
Divina 3 886



Divina 3 181



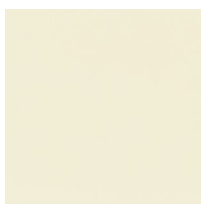
Divina 3 876



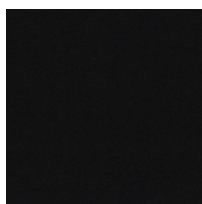
Divina 3 552



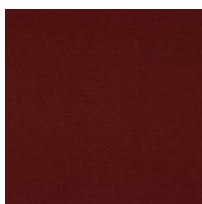
Divina 3 224



Divina 3 106

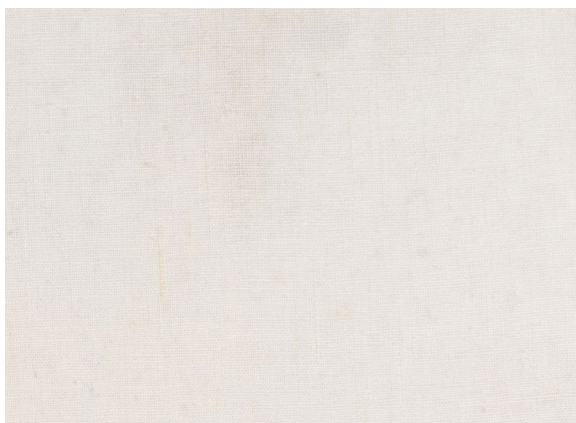


Divina 3 793



Divina 3 584

→ **Brenda 01**



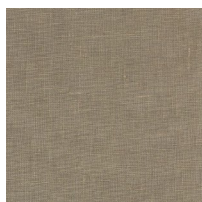
Caratteristiche Tecniche / Technical features:

| | |
|--|-------------------------|
| Categoria Category | Top Top |
| Altezza Height | cm 140 inch 55,1181 |
| Peso gr/mtl Weight gr/mtl | 580 g/mt2 580 g/mt2 |
| Composizione Composition | 100% lino 100% linen |
| Martindale | 18.000 18.000 |
| Resistenza alla luce Light resistance | >4 >4 |
| Simboli di lavaggio Wash Care Symbols | |

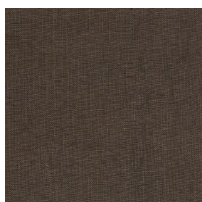
→ **Altri tessuti Brenda - Other Brenda fabrics**



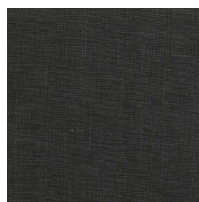
Brenda 13



Brenda 14



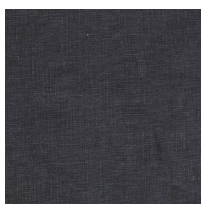
Brenda 05



Brenda 15



Brenda 03




Brenda 16

→ Stone 2



Caratteristiche Tecniche / Technical features:

| | |
|--|--|
| Categoria Category | Special Special |
| Altezza Height | cm 140 inch 55,1181 |
| Peso gr/mtl Weight gr/mtl | 800 g/mt2 800 g/mt2 |
| Composizione Composition | 16% cotone, 47% lino, 11% nylon, 21% viscosa, 5% acrilico 16% cotone, 47% lino, 11% nylon, 21% viscosa, 5% acrilico |
| Martindale Martindale | 20.000 20.000 |
| Resistenza alla luce Light resistance | 4/5 4/5 |
| Simboli di lavaggio Wash Care Symbols |  |

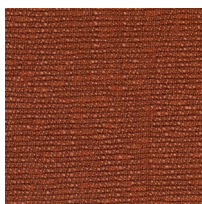
→ Altri tessuti Stone - Other Stone fabrics



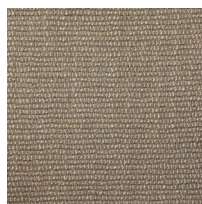
Stone 3



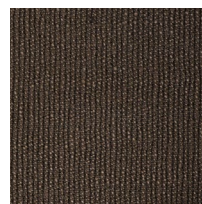
Stone 1



Stone 9



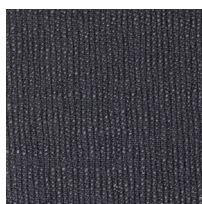
Stone 4



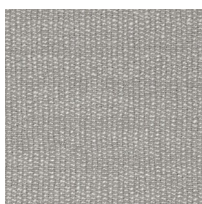
Stone 6



Stone 7

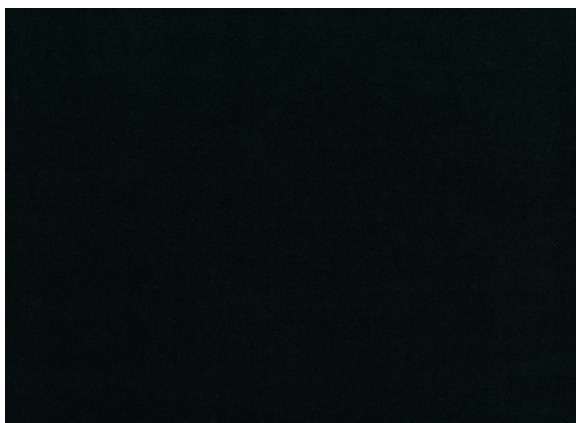


Stone 8



Stone 5

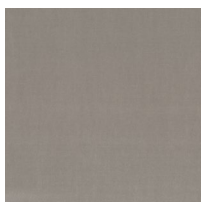
→ Harald 3 982



Caratteristiche Tecniche / Technical features:

| | |
|--|---|
| Categoria Category | Vip Vip |
| Altezza Height | cm 140 inch 55,1181 |
| Peso gr/mtl Weight gr/mtl | 520g/mt2 520 g/mt2 |
| Composizione Composition | 100% Cotone 100% Cotton |
| Martindale | 100.000 100.000 |
| Resistenza alla luce Light resistance | 5/6 5/6 |
| Simboli di lavaggio Wash Care Symbols |  |

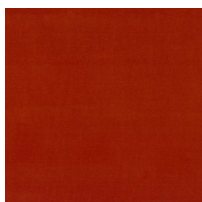
→ Altri tessuti Harald3 - Other Harald3 fabrics



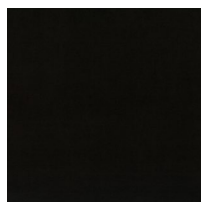
Harald 3 233



Harald 3 242



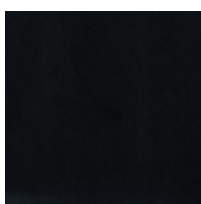
Harald 3 512



Harald 3 283



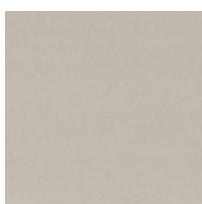
Harald 3 952



Harald 3 182



Harald 3 443



Harald 3 212

→ **Nabuk 400**

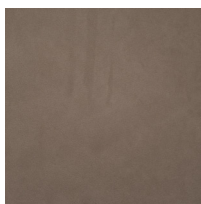
Caratteristiche Tecniche / Technical features:

| | |
|---------------------------------------|---|
| Spessore Thickness | 1,2/1,4 mm 1,2/1,4 mm |
| Tipologia Leather type | Nabuk Nabuk |
| Origine e provenienza Raw Material | Pelli Bovine Europee European Raw Hides |
| Concia Tannage | Sali di Cromo Chromium Salt |
| Tintura Dyeing | Anilina Passante in Botte Through-Dyeing Aniline |
| Rifinitura Finishing | Anilina Aniline |
| Categoria Category | C C |

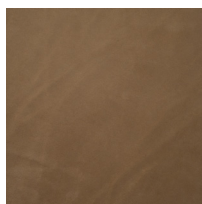
Pulizia e Manutenzione / Cleaning and Maintenance:

Per la normale pulizia spolverare con un panno morbido e asciutto. Evitare la luce diretta del sole e l'esposizione a fonti di calore.

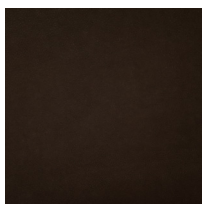
Dust with a soft and dry cloth for the normal cleaning. Avoid placing leather near direct sun and keep the leather away from heat sources.

→ **Altre pelli Nabuk - Other Nabuk leathers**

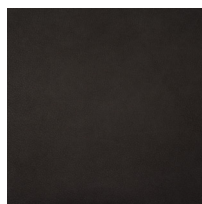
Nabuk 401



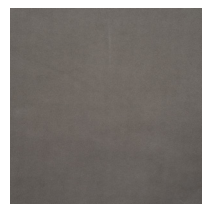
Nabuk 402



Nabuk 403

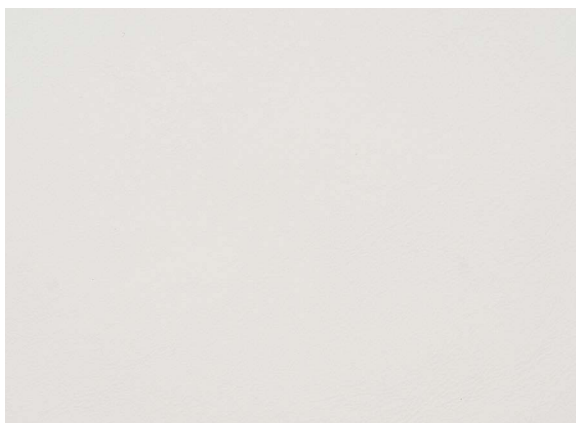


Nabuk 404



Nabuk 405

→ **Florence 00**



Caratteristiche Tecniche / Technical features:

| | |
|---------------------------------------|--|
| Spessore Thickness | 1,1/1,3 mm 1,1/1,3 mm |
| Tipologia Leather type | Grana Corretta, Pelle Liscia Corrected Grain, Smooth Leather |
| Origine e provenienza Raw Material | Tori Europei European Bulls |
| Concia Tannage | Sali di Cromo Chromium Salt |
| Tintura Dyeing | Anilina Passante in Botte Through-Dyeing Aniline |
| Rifinitura Finishing | Poliuretano con Pigmenti, Tatto Cerato Pigmented Polyurethane Finishing, Waxy Touch |
| Categoria Category | A A |

Pulizia e Manutenzione / Cleaning and Maintenance:

Evitare la luce diretta del sole e l'esposizione a fonti di calore. Spolverare regolarmente la pelle con un panno morbido e asciutto.

Avoid placing leather near direct sun and keep the leather away from heat sources. Dust regularly with a soft and dry cloth.

→ **Altre pelli Florence - Other Florence leathers**



Florence 61/6



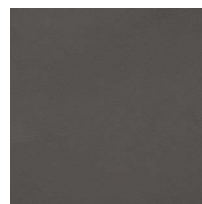
Florence 00/8



Florence 90/7



Florence 80



Florence 61/4



Florence 71/1



Florence 00/1



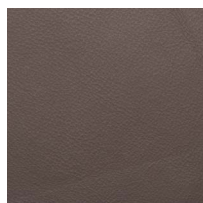
Florence 60



Florence 70



Florence 10/6



Florence 60/5

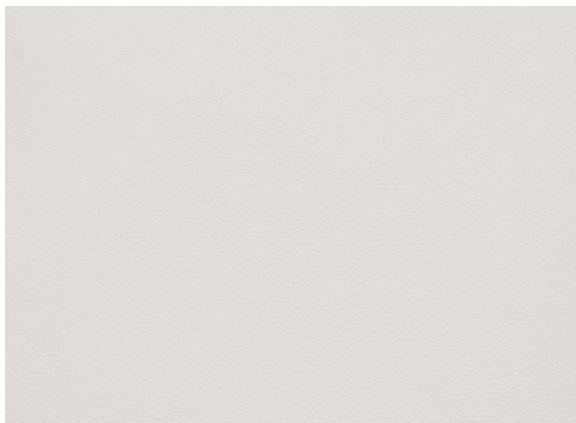


Florence 21



Florence 90

→ **New Scotland 300**



Caratteristiche Tecniche / Technical features:

| | |
|---------------------------------------|---|
| Spessore Thickness | 1,2/1,4 mm 1,2/1,4 mm |
| Tipologia Leather type | Mano Morbida, Pelle Liscia Soft Touch, Smooth Leather |
| Origine e provenienza Raw Material | Tori Europei European Bulls |
| Concia Tannage | Sali di Cromo Chromium Salt |
| Tintura Dyeing | Anilina Passante in Botte Through-Dyeing Aniline |
| Rifinitura Finishing | Pigmenti Dispersi Fini, Tatto Cerato Pigmented, Waxy Touch |
| Categoria Category | B B |

Pulizia e Manutenzione / Cleaning and Maintenance:

Evitare la luce diretta del sole e l'esposizione a fonti di calore. Spolverare regolarmente la pelle con un panno morbido e asciutto.

Avoid placing leather near direct sun and keep the leather away from heat sources. Dust regularly with a soft and dry cloth.

→ **Altre pelli New Scotland - Other New Scotland leathers**



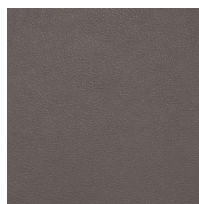
**New Scotland
304**



**New Scotland
301**



**New Scotland
302**



**New Scotland
305**



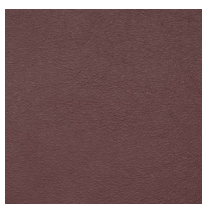
**New Scotland
303**



**New Scotland
361**

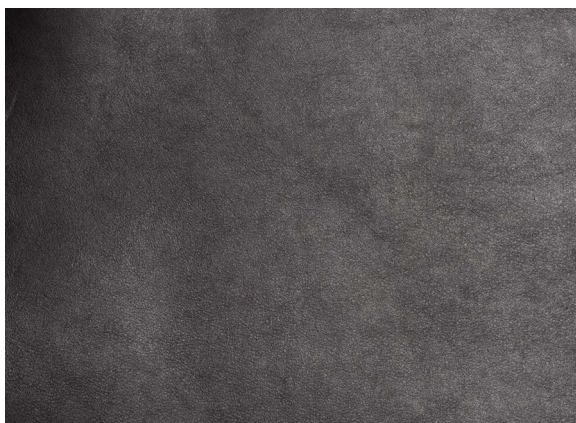


**New Scotland
380**



**New Scotland
390**

→ **Caresse 807**



Caratteristiche Tecniche / Technical features:

| | |
|---------------------------------------|---|
| Spessore Thickness | 1,0/1,2 mm 1,0/1,2 mm |
| Tipologia Leather type | Pieno Fiore Full Grain |
| Origine e provenienza Raw Material | Pelli Bovine Europee European Raw Hides |
| Concia Tannage | Sali di Cromo Chromium Salt |
| Tintura Dyeing | Anilina Passante in Botte Through-Dyeing Aniline |
| Rifinitura Finishing | Anilina Aniline |
| Categoria Category | C C |

Pulizia e Manutenzione / Cleaning and Maintenance:

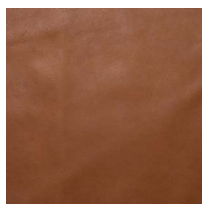
Evitare la luce diretta del sole e l'esposizione a fonti di calore. Spolverare regolarmente la pelle con un panno morbido e asciutto.

Avoid placing leather near direct sun and keep the leather away from heat sources. Dust regularly with a soft and dry cloth.

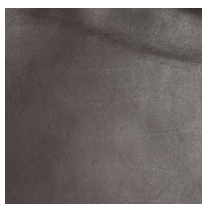
→ **Altre pelli Caresse - Other Caresse leathers**



Caresse 802



Caresse 801



Caresse 808

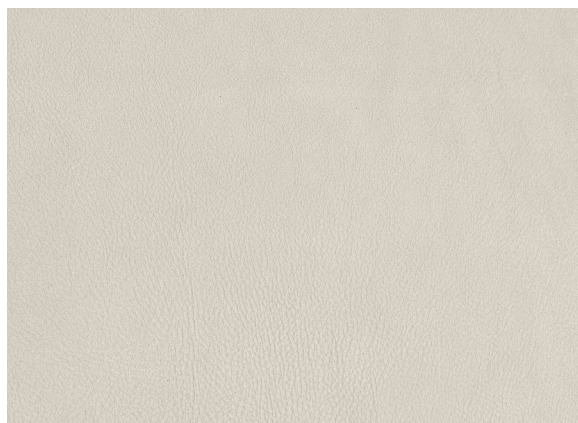


Caresse 800



Caresse 806

→ **Seta 700 Latte**



Caratteristiche Tecniche / Technical features:

| | |
|---------------------------------------|---|
| Spessore Thickness | 1,6/1,8 mm 1,6/1,8 mm |
| Tipologia Leather type | Pieno Fiore Full Grain |
| Origine e provenienza Raw Material | Pelli Bovine Europee European Raw Hides |
| Concia Tannage | Sali di Cromo Chromium Salt |
| Tintura Dyeing | Anilina Passante in Botte Through-Dyeing Aniline |
| Rifinitura Finishing | Anilina Aniline |
| Categoria Category | B B |

Pulizia e Manutenzione / Cleaning and Maintenance:

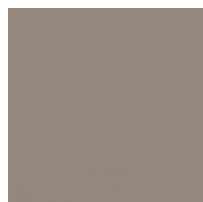
Evitare la luce diretta del sole e l'esposizione a fonti di calore. Spolverare regolarmente la pelle con un panno morbido e asciutto.

Avoid placing leather near direct sun and keep the leather away from heat sources. Dust regularly with a soft and dry cloth.

→ **Altre pelli Seta - Other Seta leathers**



Seta 701 Creta



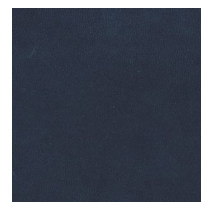
Seta 702 Tortora



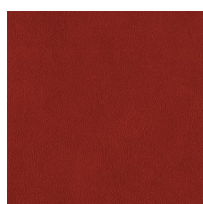
Seta 703 Ebano



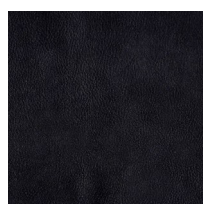
Seta 704 Brandy



Seta 705
Midnight



Seta 706 Rubino



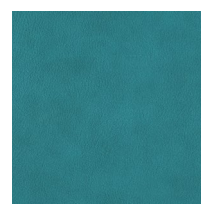
Seta 707 Black



Seta 708 Talpa



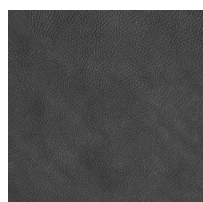
Seta 709 Militare



Seta 710 Baltico

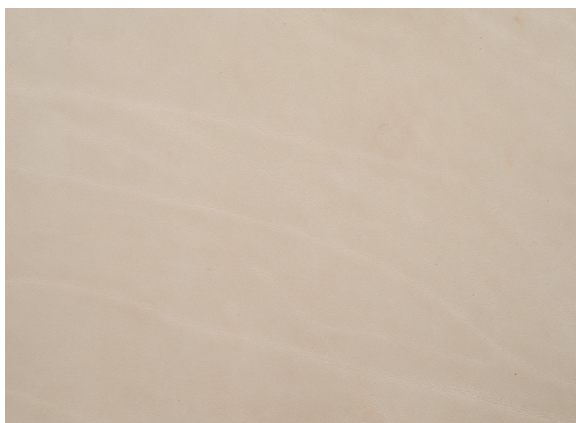


Seta 711 Biscotto



Seta 712 Piombo

→ **Must 901**



Caratteristiche Tecniche / Technical features:

| | |
|---------------------------------------|---|
| Spessore Thickness | 1,2/1,3 mm 1,2/1,3 mm |
| Tipologia Leather type | Pura Anilina Pure Aniline |
| Origine e provenienza Raw Material | Tori Europei European Bulls |
| Concia Tannage | Sali di Cromo Chromium Salt |
| Tintura Dyeing | Anilina Passante in Botte Through-Dyeing Aniline |
| Rifinitura Finishing | Anilina Aniline |
| Categoria Category | D D |

Pulizia e Manutenzione / Cleaning and Maintenance:

A causa della totale naturalezza della sua superficie, è necessario proteggere la pelle anilina dalla luce solare diretta, dal calore eccessivo e dagli oggetti appuntiti.

Because of the natural surface of Aniline leather, protection from direct sun light, excessive heat and sharp objects is required.

→ **Altre pelli Must - Other Must leathers**



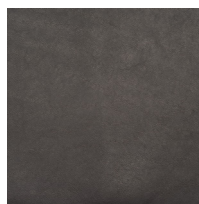
Must 902



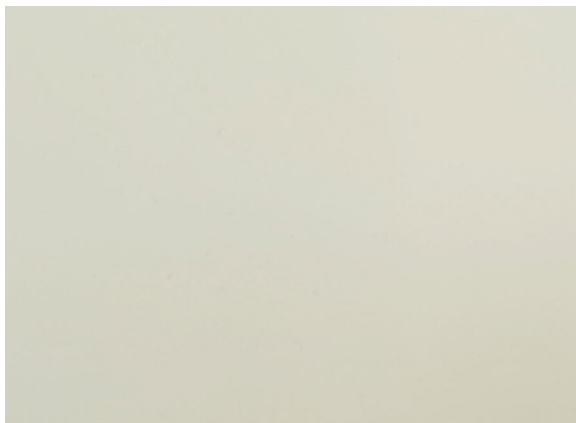
Must 903



Must 904



Must 905

→ **Cuoio Bianco** White Hide

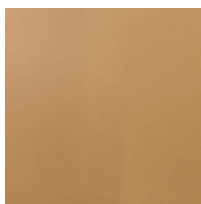
Caratteristiche Tecniche / Technical features:

| | |
|---------------------------------------|---|
| Spessore Thickness | 1,8/2,0 mm 1,8/2,0 mm |
| Tipologia Leather type | Crosta Split Leather |
| Origine e provenienza Raw Material | Pelli Bovine Raw Hides |
| Concia Tannage | Sali di Cromo Chromium Salt |
| Tintura Dyeing | Anilina Passante in Botte Through-Dyeing Aniline |
| Rifinitura Finishing | Pigmentata Pigmented Finishing |

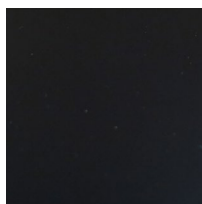
Pulizia e Manutenzione / Cleaning and Maintenance:

Evitare la luce diretta del sole e l'esposizione a fonti di calore. Spolverare regolarmente la pelle con un panno morbido e asciutto.

Avoid placing leather near direct sun and keep the leather away from heat sources. Dust regularly with a soft and dry cloth.

→ **Altri colori Cuoio - Other Hide colors**

**Cuoio
Naturale**
Natural
Hide



**Cuoio
Nero**
Black
Hide

→ **Natural 500**

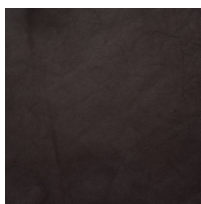
Caratteristiche Tecniche / Technical features:

| | |
|---------------------------------------|--|
| Spessore Thickness | 1,4/1,6 mm 1,4/1,6 mm |
| Tipologia Leather type | Anilina, Pieno Fiore Aniline, Full Grain |
| Origine e provenienza Raw Material | Pelli Bovine Europee European Raw Hides |
| Concia Tannage | Esente Cromo e Metalli Pesanti Chrome-Free and Metal-Free |
| Tintura Dyeing | Anilina Passante in Botte Through-Dyeing Aniline |
| Categoria Category | C C |

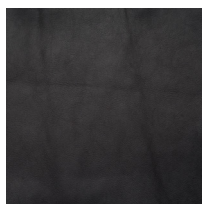
Pulizia e Manutenzione / Cleaning and Maintenance:

Per la normale pulizia spolverare con un panno morbido e asciutto. Evitare la luce diretta del sole e l'esposizione a fonti di calore.

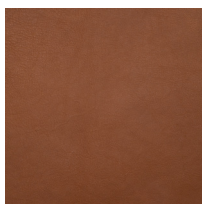
Dust with a soft and dry cloth for the normal cleaning. Avoid placing leather near direct sun and keep the leather away from heat sources.

→ **Altre pelli Natural - Other Natural leathers**

Natural 508



Natural 507

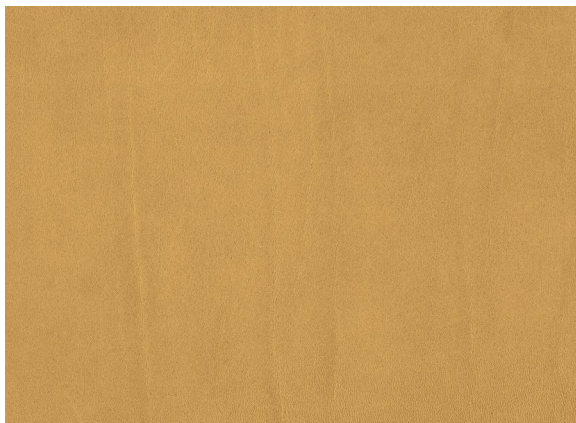


Natural 504



Natural 502

→ **Cuoietto 10/4**



Caratteristiche Tecniche / Technical features:

| | |
|---------------------------------------|---|
| Spessore Thickness | 1,9/2,1 mm 1,9/2,1 mm |
| Tipologia Leather type | Pelle Cuoietto Hide Leather |
| Origine e provenienza Raw Material | Pelli Bovine Europee European Raw Hides |
| Concia Tannage | Concia Bianca White Tanning |
| Tintura Dyeing | Anilina Passante in Botte Through-Dyeing Aniline |
| Rifinitura Finishing | Anilina Aniline |
| Categoria Category | D D |

Pulizia e Manutenzione:

Proteggere dalla luce diretta del sole, dal calore eccessivo e da oggetti appuntiti. Evitare di utilizzare sulla pelle i comuni prodotti per la pulizia domestica. Piccoli graffi o segni possono essere strofinati e rimossi con un panno asciutto e pulito. Polvere, pulviscolo atmosferico e sporcizia possono essere rimossi con un panno umido.

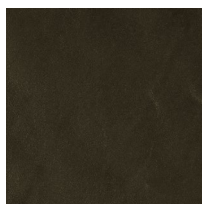
Cleaning and Maintenance:

Protect from direct sunlight, excessive heat and sharp objects. Avoid using common household cleaning products on the leather. Small scratches or marks can be rubbed and removed with a dry, clean cloth. Dust, atmospheric dust and dirt can be removed with a damp cloth.

→ **Altre pelli Cuoietto - Other Cuoietto leathers**



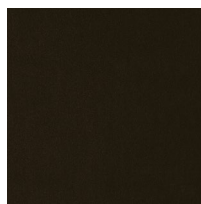
Cuoietto 71/8



Cuoietto 60



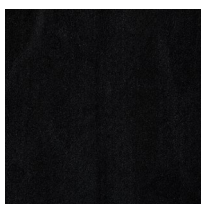
Cuoietto 22



Cuoietto 90



Cuoietto 101



Cuoietto 80

→ **Mandorlo 204 Nugget**



Caratteristiche Tecniche / Technical features:

| | |
|---|---|
| Spessore Thickness | 1,4/1,6 mm 1,4/1,6 mm |
| Tipologia Leather type | Nubuk - Tintura all'anilina passante in botte Nubuk - Through dyeing aniline |
| Origine e provenienza Raw Material | Pelli Bovine Europee European Raw Hides |
| Concia Tannage | Esente Cromo e Metalli Pesanti Chrome - Free and Metal - Free |
| Tintura Dyeing | Anilina Passante in Botte Through-Dyeing Aniline |
| Resistenza alla luce Fastness to light | ≥ 2/3 Scala dei Blu ≥ 2/3 Blue Scale |
| Categoria Category | D D |

La pelle Mandorlo è Zero Impact. Le pelli Zero Impact sono chrome e heavy metal free e sono allineate con la normativa ISO 15987 che fissa nello 0,1% la somma massima consentita di contenuto di metalli pesanti. Tutte le fasi di lavorazione vengono realizzate con prodotti innovativi: ciò ha richiesto un corposo impegno di risorse per la sperimentazione e industrializzazione dei nuovi processi produttivi.

The leather Mandorlo is Zero Impact. It is chrome and heavy metal free and complies with the specification ISO 15987, which requires that the sum of all the heavy metal contained in the leather must not exceed the 0,1%. All the processing stages are realized with innovative products: this has required a substantial commitment of resources in the experimentation and industrialization of new production processes.

Pulizia e Manutenzione / Cleaning and Maintenance:

Evitare la luce diretta del sole e l'esposizione a fonti di calore. Spolverare regolarmente la pelle con un panno morbido e asciutto.

Avoid placing leather near direct sun and keep the leather away from heat sources. Dust regularly with a soft and dry cloth.

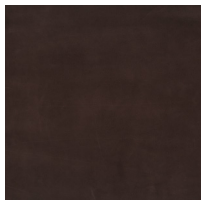
→ **Altre pelli Mandorlo - Other Mandorlo leathers**



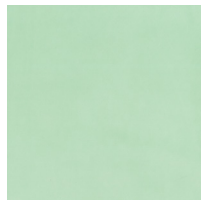
Mandorlo 208
Seppia



Mandorlo 209
Salvia



Mandorlo 203
Testa di Moro



Mandorlo 206
Quit Green

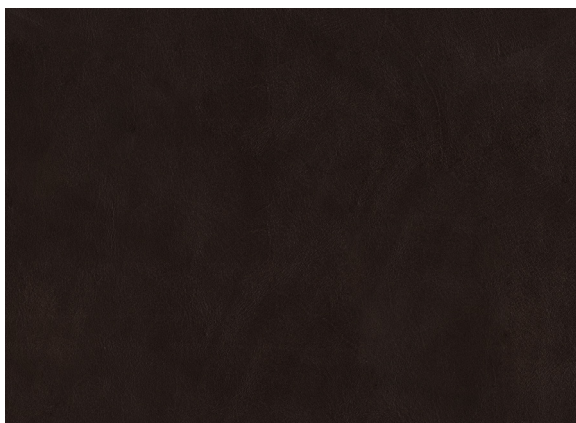


Mandorlo 201
Irish Cream



Mandorlo 210
Bluette

→ **Teak 603 Testa di Moro**



Caratteristiche Tecniche / Technical features:

| | |
|---|--|
| Spessore Thickness | 1,4/1,6 mm 1,4/1,6 mm |
| Tipologia Leather type | Anilina - Pieno Fiore Aniline - Full Grain |
| Origine e provenienza Raw Material | Pelli Bovine Europee European Raw Hides |
| Concia Tannage | Esente Cromo e Metalli Pesanti Chrome - Free and Metal - Free |
| Tintura Dyeing | Anilina Passante in Botte Through-Dyeing Aniline |
| Resistenza alla luce Fastness to light | ≥ 2/3 Scala dei Blu ≥ 2/3 Blue Scale |
| Categoria Category | D D |

La pelle Teak è Zero Impact. Le pelli Zero Impact sono chrome e heavy metal free e sono allineate con la normativa ISO 15987 che fissa nello 0,1% la somma massima consentita di contenuto di metalli pesanti. Tutte le fasi di lavorazione vengono realizzate con prodotti innovativi: ciò ha richiesto un corposo impegno di risorse per la sperimentazione e industrializzazione dei nuovi processi produttivi.

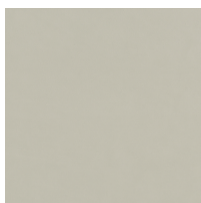
The leather Teak is Zero Impact. It is chrome and heavy metal free and complies with the specification ISO 15987, which requires that the sum of all the heavy metal contained in the leather must not exceed the 0,1%. All the processing stages are realized with innovative products: this has required a substantial commitment of resources in the experimentation and industrialization of new production processes.

Pulizia e Manutenzione / Cleaning and Maintenance:

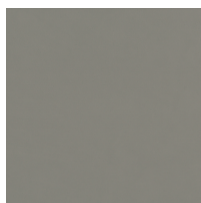
Evitare la luce diretta del sole e l'esposizione a fonti di calore. Spolverare regolarmente la pelle con un panno morbido e asciutto.

Avoid placing leather near direct sun and keep the leather away from heat sources. Dust regularly with a soft and dry cloth.

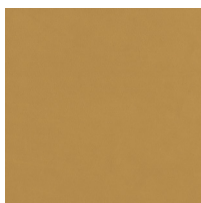
→ **Altre pelli Teak - Other Teak leathers**



Teak 601
Sabbia



Teak 602
Grigio



Teak 604
Albicocca



Teak 608
Seppia