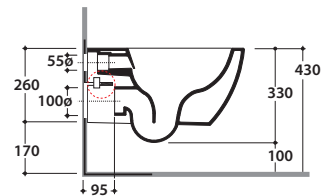
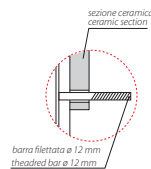
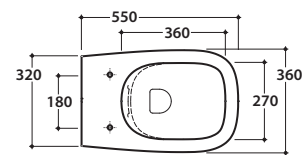


GENESIS WALL-HUNG WC -NO RIM GNS02BI

CE EN 997:2015

GLOBO



Ceramic antibacterial effect
BATAFORM®



Scarico ottimizzato a 4/2,6 litri
Drain 4/2,6 lt



SENZABRIDA®



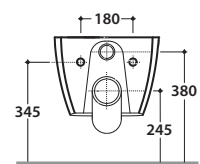
Glazed product with
CERASLIDE®



Bagno di Colore

Cod. **GNS02BI**

Wall-hung Wc No-rim 55.36 h33 cm. Drain 4 / 2,6 Lt. Fixing kit included. Weight 20 Kg



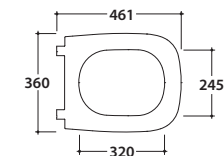
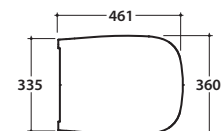
Seat-cover with hinge system
to quick release



Antibacterial treatment on toilet seats
in shiny white

Cod. **GN020BI**

Duroplast seat-cover with soft-closing system. Weight 3 Kg



Cod. **VA132**

Flow reducer.



Cod. **PU001**

Acoustic and crash protection.



Cod. **FI002**

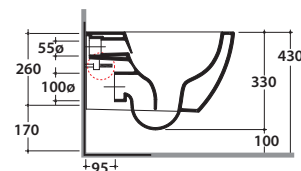
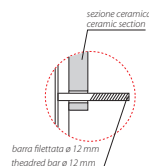
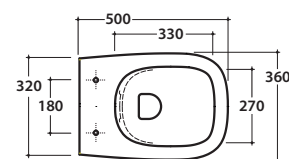
Fixing brackets for W/H sanitary. Weight 2,5 Kg

GENESIS WALL-HUNG WC NO RIM

GNS03BI

CE EN 997:2015

GLOBO



Effetto antibatterico su ceramica BATAFORM®
Ceramic antibacterial effect BATAFORM®



Scarico ottimizzato a 4/2,6 litri
Drain 4/2,6 lt



SENZABRIDA®



Prodotto smaltato con CERASLIDE®
Glazed product with CERASLIDE®

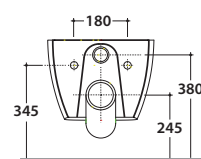


Bagno di Colore

Cod. **GNS03BI**

Vaso sospeso SENZABRIDA® 50.36 h33 cm. Scarico 4 / 2,6 Lt. Completo di fissaggi. Peso 21 Kg

Wall-hung Wc No-rim 50.36 h33 cm. Drain 4/2,6 Lt. Fixing kit included. Weight 21 Kg



Coprivaso con sistema di cerniere a sgancio rapido
Seat-cover with hinge system to quick release

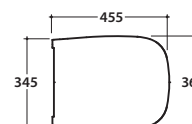


Trattamento antibatterico per sedili in versione bianco lucido
Antibacterial treatment on toilet seats in shiny white

Cod. **GN021BI**

Coprivaso in duroplast con chiusura tradizionale. Peso 3 Kg

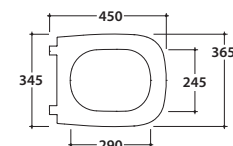
Duroplast seat-cover with traditional closing system. Weight 3 Kg



Cod. **GN022BI**

Coprivaso in duroplast con chiusura rallentata. Peso 3 Kg

Duroplast seat-cover with soft-closing system. Weight 3 Kg



Cod. **VA132**

Riduttore flusso di scarico.

Flow reductor.



Cod. **PU001**

Protezione antiurto e acustica.

Acoustic and crash protection.



Cod. **FI002**

Staffa di fissaggio a "L". Peso 2,5 Kg

Fixing brackets for W/H sanitary. Weight 2,5 Kg