



PRODUCT SHEET

Hashira Floor Lamp
by Norm Architects



Hashira Floor Lamp

BY NORM ARCHITECTS

Translucent, cylindrical fabric shade with metal frame, textile cord and dimmer switch.

PRODUCT OPTIONS



White
1501059



Raw
1501699



Hashira Floor Lamp

BY NORM ARCHITECTS

TECHNICAL SPECIFICATIONS

PRODUCT TYPE
Floor lamp

COLLI
1

ENVIRONMENT
Indoor

DIMENSIONS
H: 83 cm / 32,7"
Ø: 30 cm / 11,8"

PRODUCTION PROCESS
Welded steel frame with a hand-made shade and sandblasted wood base.

COLOUR
White, ash
Raw, stained oak

MATERIALS
Steel, linen, PS plastic, ash
Thickness of line may vary giving a slightly different light.

WEIGHT
6,51 kg / 14,35 lb

VOLTAGE
CE: 220-230 V
US: 110-130 V

LIGHT SOURCE & ENERGY EFFICIENCY CLASS
E27 (CE) - 2 pcs
E26 (US) - 2 pcs

Max 40 Watt

LIGHT SPECIFICATION
Bulbs not included.

DIMMER
Yes, on cord.

CANOPY
N / A

CORD MATERIAL AND COLOUR
Textile, black, plug, black.

CORD LENGTH
300 cm / 118"

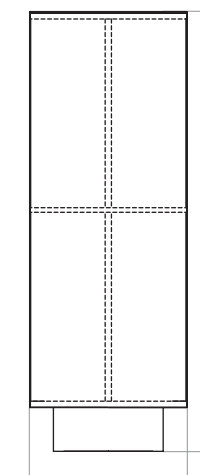
CLASSIFICATION
IP20, Class II

CERTIFICATIONS
CE and ETL certified, tests can be obtained upon request.

PACKAGING TYPE
Brown box

PACKAGING MEASUREMENTS (H x W x D)
37 cm x 37 cm x 88 cm / 14,6" x 14,6" x 34,6"

MATERIALS & MAINTENANCE
Please visit menuspace.com for materials and care and maintenance instructions.



Ø: 30 cm / 11,8"



Hashira Floor Lamp, High

BY NORM ARCHITECTS

Set on an elegant powder-coated steel foot for an elevated and airy expression, the Japanese-inspired Hashira High Floor Lamp by Norm Architects illuminates spaces with soft light, elegantly diffused through its tactile fabric shade.

PRODUCT OPTIONS



White
1507059



Raw
1507699



Hashira Floor Lamp, High

BY NORM ARCHITECTS

TECHNICAL SPECIFICATIONS

PRODUCT TYPE
Floor lamp

WEIGHT
N / A

CANOPY
N / A

COLLI
1

VOLTAGE
CE: 220-230 V
US: 110-130 V

CORD MATERIAL AND COLOUR
Textile, black, plug, black.

ENVIRONMENT
Indoor

LIGHT SOURCE & ENERGY EFFICIENCY CLASS
E27 (CE) - 2 pcs
E26 (US) - 2 pcs

CORD LENGTH
220 cm / 86"

DIMENSIONS
H: 130 cm / 51,1"
Ø: 30 cm / 11,8"

Max 40 Watt

CLASSIFICATION
IP20, Class II

PRODUCTION PROCESS
Laser cut and welded steel frame with a hand-made shade.

LIGHT SPECIFICATION
Bulbs not included.

CERTIFICATIONS
CE and ETL certified, tests can be obtained upon request.

COLOUR
Raw, stained oak
White, stained oak
Black (RAL 9005)

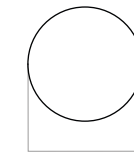
DIMMER
N / A

PACKAGING TYPE
Brown box

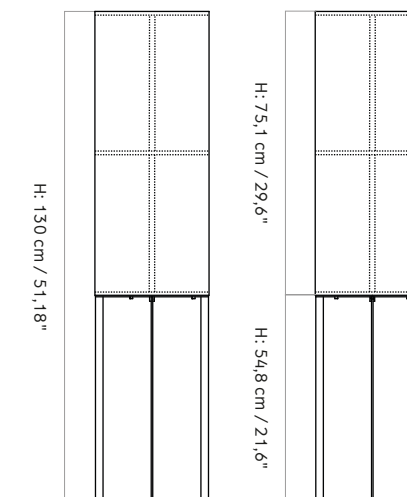
PACKAGING MEASUREMENTS (H x W x D)
N / A

MATERIALS
Powder coated steel, linen, PS plastic.

MATERIALS & MAINTENANCE
Please visit [menuspace.com](https://www.menuspace.com) for materials and care and maintenance instructions.



Ø: 30 cm / 11,81"



H: 130 cm / 51,18"

H: 75,1 cm / 29,6"

H: 54,8 cm / 21,6"